

## Scientific & Technical Activity : (Information Technology)

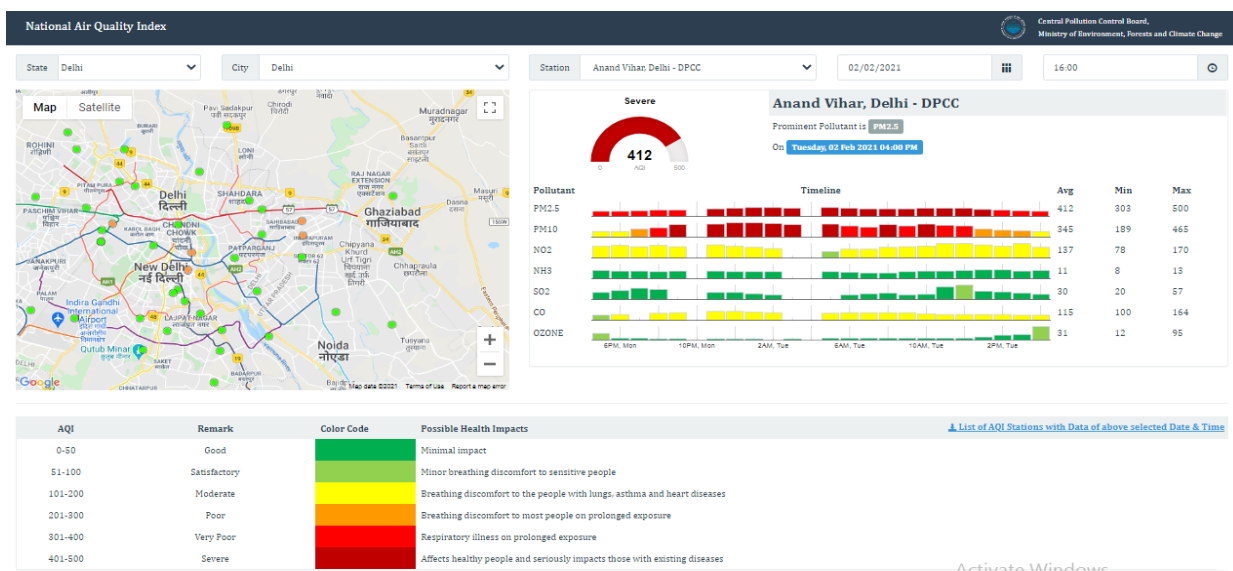
### 1. Integrated Transmission of Real-Time Information from Continuous Ambient Air Quality Monitoring Stations (CAAQMS) to CPCB Servers

CPCB, SPCBs and PCCs are monitoring ambient air quality of different cities and publish real-time data in public domain in their respective websites, for taking corrective measures in time. CPCB has been relentlessly working on continuous operation and connecting data of these CAAQM stations on a network. The project is being executed to bring the data from all the operational stations to one place i.e. CPCB.

#### Status of CAAQMS installations till 2020-21:

At present, the Real-Time Ambient Air Quality Monitoring Network consists of 274 Continuous Ambient Air Quality Monitoring Stations in 144 Cities covering 24 States & Union Territories which are connected to a web-based system. The strengthening of air quality monitoring network is being undertaken in phased manner as per the protocols of CPCB, an AQI Bulletin showing the AQI levels for these 144 cities is published daily at 4 PM.

A National Air Quality Index, which combines the effect of all air quality parameters and generates a single number, has been developed by CPCB. The National AQI communicates air quality in simple terms of one number and one colour for general public. Air Quality Index (AQI), inaugurated by the Hon'ble Prime Minister of India, is being continuously published on a web portal of CPCB, updated on hourly basis..



This CAAQMS data is made available to public and various agencies through the CPCB CCR Portal (<https://app.cpcbccc.com>). The CAAQMS data is also being displayed at various public places such as station premises of Delhi Metro Rail Corporation (DMRC). The XML feed related to air quality data is also given to various media outlets. Different types of dashboards for data visualisation have also been developed for various stakeholders.

**State-wise Status: Following is the list of CAAQM stations installed at different states and data of these stations is being used to display the AQI by CPCB:**

List of CAAQM Stations				Date:2021-02-02	
State		City		Station Name	
1	Andhra_Pradesh	1	Amaravati	1	Secretariat, Amaravati - APPCB
		2	Rajamahendravaram	2	Anand Kala Kshetram, Rajamahendravaram - APPCB
		3	Tirupati	3	Tirumala, Tirupati - APPCB
		4	Vijayawada	4	PWD Grounds, Vijayawada - APPCB
		5	Visakhapatnam	5	GVM Corporation, Visakhapatnam - APPCB
2	Assam	6	Guwahati	6	Railway Colony, Guwahati - APCB
				7	Pan Bazaar, Guwahati - APCB
3	Bihar	7	Gaya	8	Collectorate, Gaya - BSPCB
				9	SFTI Kusdihra, Gaya - BSPCB
		8	Hajipur	10	Industrial Area, Hajipur - BSPCB
				11	Muzaffarpur Collectorate, Muzaffarpur - BSPCB
		9	Muzaffarpur	12	Buddha Colony, Muzaffarpur - BSPCB
				10	Patna
		14	Muradpur, Patna - BSPCB		
		15	Samanpura, Patna - BSPCB		
16	Rajbansi Nagar, Patna - BSPCB				
17	DRM Office Danapur, Patna - BSPCB				
18	Govt. High School Shikarpur, Patna - BSPCB				
4	Chandigarh	11	Chandigarh	19	Sector-25, Chandigarh - CPCC
5	Delhi	12	Delhi	20	Alipur, Delhi - DPCC
				21	Shadipur, Delhi - CPCB
				22	IHBAS, Dilshad Garden, Delhi - CPCB
				23	NSIT Dwarka, Delhi - CPCB
				24	DTU, Delhi - CPCB
				25	ITO, Delhi - CPCB
				26	Sirifort, Delhi - CPCB
				27	Mandir Marg, Delhi - DPCC
				28	Anand Vihar, Delhi - DPCC
				29	R K Puram, Delhi - DPCC

List of CAAQM Stations				Date:2021-02-02	
State		City		Station Name	
				30	Punjabi Bagh, Delhi - DPCC
				31	Aya Nagar, Delhi - IMD
				32	Lodhi Road, Delhi - IMD
				33	North Campus, DU, Delhi - IMD
				34	Burari Crossing, Delhi - IMD
				35	CRRI Mathura Road, Delhi - IMD
				36	Pusa, Delhi - IMD
				37	IGI Airport (T3), Delhi - IMD
				38	East Arjun Nagar, Delhi - CPCB
				39	Ashok Vihar, Delhi - DPCC
				40	Jawaharlal Nehru Stadium, Delhi - DPCC
				41	Nehru Nagar, Delhi - DPCC
				42	Dwarka-Sector 8, Delhi - DPCC
				43	Dr. Karni Singh Shooting Range, Delhi - DPCC
				44	Patparganj, Delhi - DPCC
				45	Sonia Vihar, Delhi - DPCC
				46	Jahangirpuri, Delhi - DPCC
				47	Rohini, Delhi - DPCC
				48	Najafgarh, Delhi - DPCC
				49	Vivek Vihar, Delhi - DPCC
				50	Major Dhyan Chand National Stadium, Delhi - DPCC
				51	Narela, Delhi - DPCC
				52	Okhla Phase-2, Delhi - DPCC
				53	Wazirpur, Delhi - DPCC
				54	Bawana, Delhi - DPCC
				55	Sri Aurobindo Marg, Delhi - DPCC
				56	Pusa, Delhi - DPCC
				57	Mundka, Delhi - DPCC
				58	Lodhi Road, Delhi - IITM
59	Chandni Chowk, Delhi - IITM				
6	Gujarat	13	Ahmedabad	60	Maninagar, Ahmedabad - GPCB
		14	Ankleshwar	61	GIDC, Ankleshwar - GPCB
		15	GandhiNagar	62	Sector-10, Gandhinagar - GPCB
		16	Nandesari	63	GIDC, Nandesari - Nandesari Ind. Association
		17	Vapi	64	Phase-1 GIDC, Vapi - GPCB
		18	Vatva	65	Phase-4 GIDC, Vatva - GPCB
7	Haryana	19	Ambala	66	Patti Mehar, Ambala - HSPCB
		20	Bahadurgarh	67	Arya Nagar, Bahadurgarh - HSPCB
		21	Ballabgarh	68	Nathu Colony, Ballabgarh - HSPCB

List of CAAQM Stations				Date:2021-02-02	
State		City		Station Name	
		22	Bhiwani	69	H.B. Colony, Bhiwani - HSPCB
		23	Charkhi Dadri	70	Mini Secretariat, Charkhi Dadri - HSPCB
		24	Dharuhera	71	Municipal Corporation Office, Dharuhera - HSPCB
		25	Faridabad	72	Sector- 16A, Faridabad - HSPCB
				73	New Industrial Town, Faridabad - HSPCB
				74	Sector 11, Faridabad - HSPCB
				75	Sector 30, Faridabad - HSPCB
		26	Fatehabad	76	Huda Sector, Fatehabad - HSPCB
		27	Gurgaon	77	Vikas Sadan, Gurugram - HSPCB
				78	NISE Gwal Pahari, Gurugram - IMD
				79	Sector-51, Gurugram - HSPCB
				80	Teri Gram, Gurugram - HSPCB
		28	Hisar	81	Urban Estate-II, Hisar - HSPCB
		29	Jind	82	Police Lines, Jind - HSPCB
		30	Kaithal	83	Rishi Nagar, Kaithal - HSPCB
		31	Karnal	84	Sector-12, Karnal - HSPCB
		32	Kurukshetra	85	Sector-7, Kurukshetra - HSPCB
		33	Mandikhera	86	General Hospital, Mandikhera - HSPCB
		34	Manesar	87	Sector-2 IMT, Manesar - HSPCB
		35	Narnaul	88	Shastri Nagar, Narnaul - HSPCB
		36	Palwal	89	Shyam Nagar, Palwal - HSPCB
		37	Panchkula	90	Sector-6, Panchkula - HSPCB
38	Panipat	91	Sector-18, Panipat - HSPCB		
39	Rohtak	92	MD University, Rohtak - HSPCB		
40	Sirsa	93	F-Block, Sirsa - HSPCB		
41	Sonipat	94	Murthal, Sonipat - HSPCB		
42	Yamunanagar	95	Gobind Pura, Yamuna Nagar - HSPCB		
8	Jharkhand	43	Jorapokhar	96	Tata Stadium, Jorapokhar - JSPCB
9	Karnataka	44	Bagalkot	97	Vidayagiri, Bagalkot - KSPCB
		45	Bangalore	98	Sanegurava Halli, Bengaluru - KSPCB
				99	City Railway Station, Bengaluru - KSPCB
				100	BWSSB Kadabesanahalli, Bengaluru - CPCB
				101	Peenya, Bengaluru - CPCB
				102	BTM Layout, Bengaluru - CPCB
				103	Bapuji Nagar, Bengaluru - KSPCB
				104	Silk Board, Bengaluru - KSPCB
				105	Hebbal, Bengaluru - KSPCB
				106	Hombegowda Nagar, Bengaluru - KSPCB
107	Jayanagar 5th Block, Bengaluru - KSPCB				

List of CAAQM Stations				Date:2021-02-02	
State		City		Station Name	
		46	Bidar	108	Naubad, Bidar - KSPCB
		47	Chamarajanagar	109	Urban, Chamarajanagar - KSPCB
		48	Chikkaballapur	110	Chikkaballapur Rural, Chikkaballapur - KSPCB
		49	Chikkamagaluru	111	Kalyana Nagara, Chikkamagaluru - KSPCB
		50	Davanagere	112	Devaraj Urs Badavane, Davanagere - KSPCB
		51	Gadag	113	Panchal Nagar, Gadag - KSPCB
		52	Hubballi	114	Deshpande Nagar, Hubballi - KSPCB
		53	Kalaburagi	115	Lal Bahadur Shastri Nagar, Kalaburagi - KSPCB
		54	Kolar	116	Tamaka Ind. Area, Kolar - KSPCB
		55	Koppal	117	Diwator Nagar, Koppal - KSPCB
		56	Madikeri	118	Stuart Hill, Madikeri - KSPCB
		57	Manglore	119	Kadri, Mangalore - KSPCB
		58	Mysuru	120	Hebbal 1st Stage, Mysuru - KSPCB
		59	Raichur	121	Haji Colony, Raichur - KSPCB
		60	Ramanagara	122	Vijay Nagar, Ramanagara - KSPCB
61	Shivamogga	123	Vinoba Nagara, Shivamogga - KSPCB		
62	Vijayapura	124	Ibrahimpur, Vijayapura - KSPCB		
63	Yadgir	125	Collector Office, Yadgir - KSPCB		
10	Kerala	64	Eloor	126	Udyogamandal, Eloor - Kerala PCB
		65	Ernakulam	127	Kacheripady, Ernakulam - Kerala PCB
		66	Kannur	128	Thavakkara, Kannur - Kerala PCB
		67	Kochi	129	Vyttila, Kochi - Kerala PCB
		68	Kollam	130	Polayathode, Kollam - Kerala PCB
		69	Kozhikode	131	Palayam, Kozhikode - Kerala PCB
		70	Thiruvananthapuram	132	Plammoodu, Thiruvananthapuram - Kerala PCB
				133	Kariavattom, Thiruvananthapuram - Kerala PCB
71	Thrissur	134	Corporation Ground, Thrissur - Kerala PCB		
11	MadhyaPradesh	72	Bhopal	135	T T Nagar, Bhopal - MPPCB
		73	Damoh	136	Shrivastav Colony, Damoh - MPPCB
		74	Dewas	137	Bhopal Chauraha, Dewas - MPPCB
		75	Gwalior	138	City Center, Gwalior - MPPCB
				139	Phool Bagh, Gwalior - Mondelez Ind. Food
		76	Indore	140	Chhoti Gwaltoli, Indore - MPPCB
		77	Jabalpur	141	Marhatal, Jabalpur - MPPCB
		78	Katni	142	Gole Bazar, Katni - MPPCB
		79	Maihar	143	Sahilara, Maihar - KJS Cements
		80	Mandideep	144	Sector-D Industrial Area, Mandideep - MPPCB
		81	Pithampur	145	Sector-2 Industrial Area, Pithampur - MPPCB
		82	Ratlam	146	Shastri Nagar, Ratlam - IPCA Lab

List of CAAQM Stations				Date:2021-02-02	
State		City		Station Name	
12	Maharashtra	83	Sagar	147	Deen Dayal Nagar, Sagar - MPPCB
		84	Satna	148	Bandhavgar Colony, Satna - Birla Cement
		85	Singrauli	149	Vindhyachal STPS, Singrauli - MPPCB
		86	Ujjain	150	Mahakaleshwar Temple, Ujjain - MPPCB
		87	Aurangabad	151	More Chowk Waluj, Aurangabad - MPCB
		88	Chandrapur	152	Chandrapur, Chandrapur - MPCB
				153	MIDC Khutala, Chandrapur - MPCB
		89	Kalyan	154	Khadakpada, Kalyan - MPCB
		90	Mumbai	155	Bandra, Mumbai - MPCB
				156	Chhatrapati Shivaji Intl. Airport (T2), Mumbai - MPCB
				157	Powai, Mumbai - MPCB
				158	Vasai West, Mumbai - MPCB
				159	Vile Parle West, Mumbai - MPCB
				160	Kurla, Mumbai - MPCB
				161	Worli, Mumbai - MPCB
				162	Borivali East, Mumbai - MPCB
				163	Sion, Mumbai - MPCB
				164	Colaba, Mumbai - MPCB
				165	Mazgaon, Mumbai - IITM
				166	Bandra Kurla Complex, Mumbai - IITM
167	Borivali East, Mumbai - IITM				
168	Deonar, Mumbai - IITM				
169	Malad West, Mumbai - IITM				
170	Navy Nagar-Colaba, Mumbai - IITM				
171	Chakala-Andheri East, Mumbai - IITM				
172	Khindipada-Bhandup West, Mumbai - IITM				
173	Kandivali East, Mumbai - MPCB				
174	Mulund West, Mumbai - MPCB				
175	Siddharth Nagar-Worli, Mumbai - IITM				
91	Nagpur	176	Opp GPO Civil Lines, Nagpur - MPCB		
92	Nashik	177	Gangapur Road, Nashik - MPCB		
93	Navi Mumbai	178	Airoli, Navi Mumbai - MPCB		
		179	Nerul, Navi Mumbai - MPCB		
		180	Mahape, Navi Mumbai - MPCB		
		181	Sector-19A Nerul, Navi Mumbai - IITM		
94	Pune	182	Karve Road, Pune - MPCB		
		183	Bhosari, Pune - IITM		
		184	Mhada Colony, Pune - IITM		
		185	Revenue Colony-Shivajinagar, Pune - IITM		

List of CAAQM Stations				Date:2021-02-02	
State		City		Station Name	
				186	Transport Nagar-Nigdi, Pune - IITM
				187	Alandi, Pune - IITM
				188	Hadapsar, Pune - IITM
				189	MIT-Kothrud, Pune - IITM
		95	Solapur	190	Solapur, Solapur - MPCB
		96	Thane	191	Pimpleshwar Mandir, Thane - MPCB
13	Meghalaya	97	Shillong	192	Lumpyngngad, Shillong - Meghalaya PCB
14	Mizoram	98	Aizawl	193	Sikulpuikawn, Aizawl - Mizoram PCB
15	Nagaland	99	Kohima	194	PWD Junction, Kohima - NPCB
16	Odisha	100	Brajrajnagar	195	GM Office, Brajrajnagar - OSPCCB
		101	Talcher	196	Talcher Coalfields,Talcher - OSPCCB
17	Puducherry	102	Puducherry	197	Jawahar Nagar, Puducherry - PPCC
18	Punjab	103	Amritsar	198	Golden Temple, Amritsar - PPCB
		104	Bathinda	199	Hardev Nagar, Bathinda - PPCB
		105	Jalandhar	200	Civil Line, Jalandhar - PPCB
		106	Khanna	201	Kalal Majra, Khanna - PPCB
		107	Ludhiana	202	Punjab Agricultural University, Ludhiana - PPCB
		108	Mandigobindgarh	203	RIMT University, Mandi Gobindgarh - PPCB
		109	Patiala	204	Model Town, Patiala - PPCB
		110	Rupnagar	205	Ratanpura, Rupnagar - Ambuja Cements
19	Rajasthan	111	Ajmer	206	Civil Lines, Ajmer - RSPCB
		112	Alwar	207	Moti Doongri, Alwar - RSPCB
		113	Bhiwadi	208	RIICO Ind. Area III, Bhiwadi - RSPCB
		114	Jaipur	209	Shastri Nagar, Jaipur - RSPCB
				210	Adarsh Nagar, Jaipur - RSPCB
				211	Police Commissionerate, Jaipur - RSPCB
		115	Jodhpur	212	Collectorate, Jodhpur - RSPCB
		116	Kota	213	Shrinath Puram, Kota - RSPCB
		117	Pali	214	Indira Colony Vistar, Pali - RSPCB
118	Udaipur	215	Ashok Nagar, Udaipur - RSPCB		
20	Tamil_Nadu	119	Chennai	216	Manali, Chennai - CPCB
				217	Velachery Res. Area, Chennai - CPCB
				218	Alandur Bus Depot, Chennai - CPCB
				219	Manali Village, Chennai - TNPCB
				220	Kodungaiyur, Chennai - TNPCB
				221	Royapuram, Chennai - TNPCB
				222	Arumbakkam, Chennai - TNPCB
				223	Perungudi, Chennai - TNPCB
		120	Coimbatore	224	SIDCO Kurichi, Coimbatore - TNPCB

List of CAAQM Stations				Date:2021-02-02	
State		City		Station Name	
		121	Gummidipoondi	225	Anthoni Pillai Nagar, Gummidipoondi - TNPCB
		122	Thoothukodi	226	Meelavittan, Thoothukudi - TNPCB
21	Telangana	123	Hyderabad	227	Central University, Hyderabad - TSPCB
				228	ICRISAT Patancheru, Hyderabad - TSPCB
				229	Bollaram Industrial Area, Hyderabad - TSPCB
				230	IDA Pashamylaram, Hyderabad - TSPCB
				231	Zoo Park, Hyderabad - TSPCB
				232	Sanathnagar, Hyderabad - TSPCB
22	Tripura	124	Agartala	233	Kunjaban, Agartala - Tripura SPCB
23	Uttar_Pradesh	125	Agra	234	Sanjay Palace, Agra - UPPCB
		126	Baghpat	235	New Collectorate, Baghpat - UPPCB
		127	Bulandshahr	236	Yamunapuram, Bulandshahr - UPPCB
		128	Ghaziabad	237	Vasundhara, Ghaziabad - UPPCB
				238	Indirapuram, Ghaziabad - UPPCB
				239	Sanjay Nagar, Ghaziabad - UPPCB
		129	Greater_Noida	240	Knowledge Park - III, Greater Noida - UPPCB
				241	Knowledge Park - V, Greater Noida - UPPCB
		130	Hapur	242	Anand Vihar, Hapur - UPPCB
		131	Kanpur	243	Nehru Nagar, Kanpur - UPPCB
				244	IITK, Kanpur - IITK
		132	Loni_Dehat	245	Loni, Ghaziabad - UPPCB
		133	Lucknow	246	Talkatora District Industries Center, Lucknow - CPCB
				247	Central School, Lucknow - CPCB
				248	Lalbagh, Lucknow - CPCB
				249	Nishant Ganj, Lucknow - UPPCB
				250	Gomti Nagar, Lucknow - UPPCB
		134	Meerut	251	Jai Bhim Nagar, Meerut - UPPCB
				252	Ganga Nagar, Meerut - UPPCB
				253	Pallavpuram Phase 2, Meerut - UPPCB
135	Muradabad	254	Lajpat Nagar, Moradabad - UPPCB		
136	Muzaffarnagar	255	New Mandi, Muzaffarnagar - UPPCB		
137	Noida	256	Sector - 62, Noida - IMD		
		257	Sector - 125, Noida - UPPCB		
		258	Sector-1, Noida - UPPCB		
		259	Sector-116, Noida - UPPCB		
138	Varanasi	260	Ardhali Bazar, Varanasi - UPPCB		
24	West_Bengal	139	Asanol	261	Asansol Court Area, Asansol - WBPCB
		140	Durgapur	262	Sidhu Kanhu Indoor Stadium, Durgapur - WBPCB
		141	Haldia	263	Haldia, Haldia - WBPCB



List of CAAQM Stations				Date:2021-02-02	
State		City		Station Name	
		142	Howrah	264	Ghusuri, Howrah - WBPCB
				265	Padmapukur, Howrah - WBPCB
				266	Belur Math, Howrah - WBPCB
		143	Kolkata	267	Rabindra Bharati University, Kolkata - WBPCB
				268	Victoria, Kolkata - WBPCB
				269	Fort William, Kolkata - WBPCB
				270	Jadavpur, Kolkata - WBPCB
				271	Rabindra Sarobar, Kolkata - WBPCB
				272	Ballygunge, Kolkata - WBPCB
				273	Bidhannagar, Kolkata - WBPCB
		144	Siliguri	274	Ward-32 Bapupara, Siliguri - WBPCB

The AQI software fetches the ambient air quality data from the CAAQM stations and publishes the values of AQI for each parameter at each station. There is no human interference in the process of fetching the data and publishing it. This application has become very popular and has created awareness in the field of environment. Media also refers CPCB data to reports the air quality in the country on day-to-day basis, especially in Delhi city. This network is expanding gradually.

#### **Implementing organizations along with details of responsibilities:**

1. **SPCBs/PCCs:** Installation and O& M of State specific CAAQM stations.
2. **CPCB:** Installation and O&M of CAAQM stations of CPCB and integration of data from all the CAAQMS stations installed by different organizations on a single platform and generation of AQI.

**AQI Bulletin** containing the data for each city is published every day at 4:00 pm for further easy understanding of the citizens. The entire process of generating AQI values, publishing every hour, preparation of bulletin and uploading it on CPCB website, is automated. One of the recent AQI Bulletins (February 1 2021) is displayed at Table-1.

**Table-1: AQI Bulletin**



**Air Quality Index on Feb 01, 2021 @ 4 PM**

*(Average of past 24 hours)*

S.No	City	Air Quality	Index Value	Prominent Pollutant	Based on Number of Monitoring Stations
1	Agartala	Poor	226	PM <sub>2.5</sub>	1
2	Agra	Poor	244	PM <sub>2.5</sub>	1
3	Ahmedabad	Moderate	173	PM <sub>10</sub>	1
4	Aizawl	Satisfactory	83	PM <sub>2.5</sub>	1
5	Ajmer	Moderate	104	PM <sub>10</sub>	1
6	Alwar	Moderate	106	PM <sub>10</sub>	1
7	Amaravati	Satisfactory	74	PM <sub>2.5</sub>	1
8	Ambala	Poor	238	PM <sub>2.5</sub>	1
9	Amritsar	Poor	205	PM <sub>2.5</sub>	1
10	Ankleshwar	Poor	226	PM <sub>2.5</sub>	1
11	Asansol	Poor	208	PM <sub>2.5</sub>	1
12	Bagalkot	Good	37	PM <sub>10</sub>	1

Further,  
to create  
more

**Possible Health Impacts**

Good	Minimal Impact
Satisfactory	Minor breathing discomfort to sensitive people
Moderate	Breathing discomfort to the people with lungs, asthma and heart diseases
Poor	Breathing discomfort to most people on prolonged exposure
Very Poor	Respiratory illness on prolonged exposure
Severe	Affects healthy people and seriously impacts those with existing diseases

**Notes:**

\* AQI is not calculated for today's bulletin for Aurangabad, Bidar, Coimbatore, Davanagere, Dewas, Dharuhera, Gadag, Hajipur, Hapur, Jind, Kalaburgi, Kochi, Muzaffarnagar, Nagpur, Panipat, Raichur, Ramanagara, Rupnagar, Shillong as data was not available.

# Some stations have data available at 3PM

\* In case of a city with multiple monitoring locations, average value is used to indicate air quality. Air quality may show variations across locations, and averaging is not a scientifically sound approach. However, for the sake of simplicity this method is being followed. For AQI of monitoring locations, website(<http://cpcb.nic.in>) website may be referred.

\* The data available at the portal is provided by different agencies. Any use of this data in research publication or any other form of publication shall duly acknowledge the contribution of respective agencies in generating the data.

informative to the common citizens, a mobile App "Sameer" has been developed and is available in Google Play Store. With this one can know the status of ambient air quality handy of his desired location. By

enabling the GPS Location of Mobile, the user can also get the alert messages about the AQI of his nearest location. It is also provisioned in the Sameer App that anyone can lodge the complaint against air pollution by providing proper information such as source of pollution, location's landmark, his contact details etc. to address the issue by the concerned departments.

**sameer**  
India's Air Quality Index

Ministry of Environment, Forest & Climate Change

**An Initiative of CPCB & Ministry of Environment, Forest and Climate Change**

CPCB launches a mobile App where public can view the Ambient Air Quality in its neighborhood and can submit complaint of open burning at any location

**Come together and be part of Clean India Drive**

Use App and prevent man made pollution by reporting it to controlling authorities directly

**FEATURES**

- ✓ Current Air Quality Index
- ✓ Air Quality Bulletin
- ✓ Report Open Burning and Air Pollution Related Issue

Download Android App from Google Play Store