



# Central Pollution Control Board

## Air Quality Status for Delhi & NCR

Dated – December 31, 2022



### Current Air Quality Status:

#### Air Quality Index (AQI) (Average of past 24 hours)

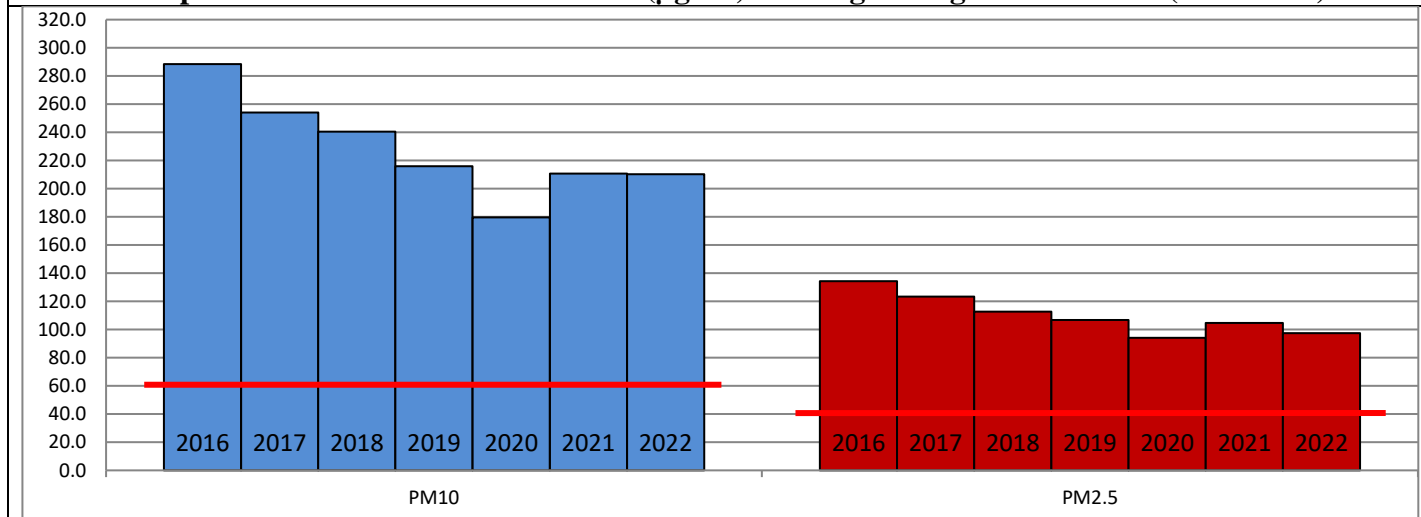
	Air Quality	AQI Value	Prominent Pollutant
Delhi	Very Poor	349 ↓	PM <sub>2.5</sub>
Faridabad	Poor	257 ↓	PM <sub>2.5</sub>
Ghaziabad	Very Poor	322 ↓	PM <sub>2.5</sub>
Greater Noida	Very Poor	353 ↓	PM <sub>2.5</sub>
Gurugram	Very Poor	326 ↓	PM <sub>2.5</sub>
Noida	Very Poor	324 ↓	PM <sub>2.5</sub>

\*Data available for 38 stations in Delhi today. # ↓ ↑ arrows indicate a decrease/increase as compared to the value on the previous day.

#### Comparative status of AQI - Delhi from 01 January to 31 December 2016-2022

Category	Year	2016	2017	2018	2019	2020	2021	2022	2016	2017	2018	2019	2020	2021	2022
	No. of days	354	365	365	365	366	365	365							
Good (0-50)		0	2	0	2	5	1	3							
Satisfactory (51-100)		24	45	53	59	95	81	65	110	152	159	182	227	197	163
Moderate (101-200)		86	105	106	121	127	115	95							
Poor (201-300)		120	115	114	103	75	80	130							
Very Poor (301-400)		99	89	72	56	49	64	66	244	213	206	183	139	168	202
Severe (>401)		25	9	20	24	15	24	6							

#### Comparative status of PM<sub>10</sub> and PM<sub>2.5</sub> (µg/m<sup>3</sup>) running average – Till Dec 29 (2016-2022)



#### Hotspots for Today:

\*Details given overleaf

Delhi	Nehru Nagar, Okhla Phase-2, Patparganj, Vivek Vihar, Wazirpur	Ghaziabad	Indirapuram, Vasundhara
Faridabad	Sector-16A, Sector-11	Greater Noida	Knowledge Park -III
Gurugram	Teri Gram, NISE Gwal Pahari	Noida	Sector-62, Sector-116

#### Forecast by IITM (Delhi):

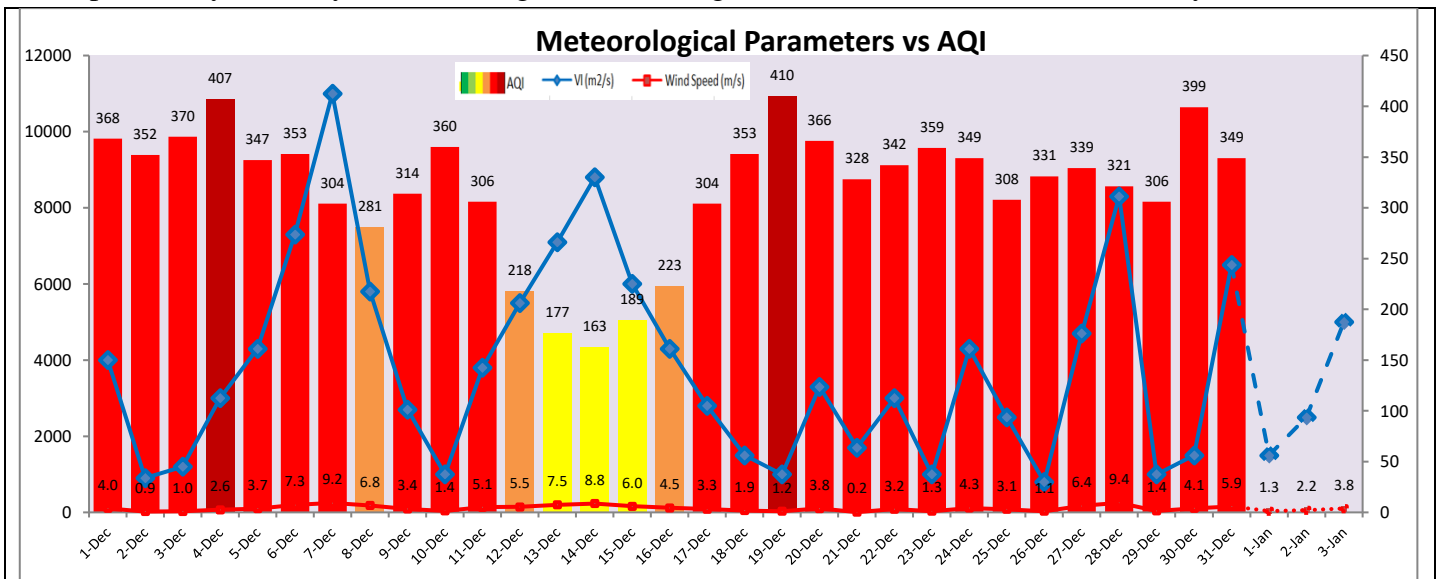
	Jan 01, 2023		Jan 02, 2023- Jan 03, 2023	
	Concentration	AQI Category	Concentration	AQI Category
PM <sub>10</sub>	146	Moderate	160	Moderate
PM <sub>2.5</sub>	102	Poor	113	Poor

### Wind Forecast for Delhi:

	Wind speed (at surface) in km/h		Wind speed (at 900 m) in km/h	Wind Direction	
	As per IMD (range)	As per windy.com (at 16:00 hrs.)	As per windy.com (at 16:00hrs)	As per IMD	As per windy.com at 900m
Jan 01, 2023	04	04	02	N/NW	W
Jan 02, 2023	04-06	06	01	N/NW	W
Jan 03, 2023	04-08	08	21	NW	NW

### IMD Alert for Tomorrow (01.01.2023):

The air quality is likely to deteriorate and reach in Severe category on 01.01.2023 and 02.01.2023. The predominant surface wind is likely to be coming from Northwest/North direction in Delhi with wind speed upto 04 kmph, mainly clear sky and dense fog in the morning tomorrow. Ventilation index is likely to be 1,500 m<sup>2</sup>/s.



### Hotspots for Today

City	Station Name	AQI value	Air Quality	Prominent Pollutant
Delhi	Nehru Nagar, Delhi - DPCC	409	Severe	PM2.5
	Okhla Phase-2, Delhi - DPCC	406	Severe	PM2.5
	Patparganj, Delhi - DPCC	392	Very Poor	PM2.5
	Vivek Vihar, Delhi - DPCC	391	Very Poor	PM2.5
	Wazirpur, Delhi - DPCC	385	Very Poor	PM2.5
Faridabad	Sector- 16A, Faridabad - HSPCB	366	Very Poor	PM2.5
	Sector 11, Faridabad - HSPCB	319	Very Poor	PM2.5
Gurugram	Teri Gram, Gurugram - HSPCB	350	Very Poor	PM2.5
	NISE Gwal Pahari, Gurugram - IMD	334	Very Poor	PM2.5
Ghaziabad	Vasundhara, Ghaziabad - UPPCB	362	Very Poor	PM2.5
	Indirapuram, Ghaziabad - UPPCB	335	Very Poor	NO2
Greater Noida	Knowledge Park - III, Greater Noida - UPPCB	357	Very Poor	PM2.5
Noida	Sector-116, Noida - UPPCB	374	Very Poor	PM2.5
	Sector - 62, Noida - IMD	357	Very Poor	PM2.5