



Central Pollution Control Board

Air Quality Status for Delhi & NCR

Dated – December 31, 2021



Current Air Quality Status:

Air Quality Index (AQI) (Average of past 24 hours)

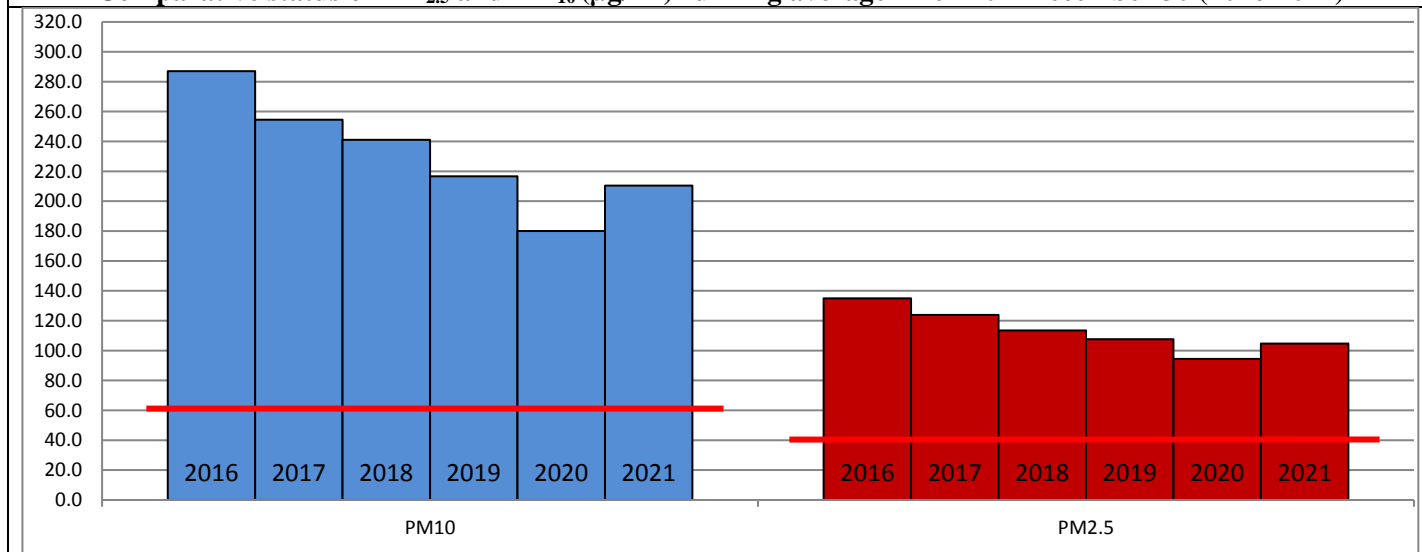
	Air Quality	AQI Value	Prominent Pollutant
Delhi	Very Poor	321↑	PM _{2.5}
Faridabad	Very Poor	304↑	PM _{2.5} , PM ₁₀
Ghaziabad	Poor	270↑	PM _{2.5}
Greater Noida	Poor	218↑	PM _{2.5}
Gurugram	Very Poor	302↑	PM _{2.5}
Noida	Poor	276↑	PM _{2.5}

*Data available for 35 stations in Delhi today. # ↓, ↑ arrows indicate increase/decrease as compared to value on the previous day

Comparative status of AQI - Delhi from 01 January to 31 December 2016-2021

Category	Year	2016	2017	2018	2019	2020	2021	2016	2017	2018	2019	2020	2021
	No. of days	352	363	363	364	365	364						
Good (0–50)		0	2	0	2	5	1						
Satisfactory (51–100)		25	45	53	59	95	72	108	152	159	182	227	197
Moderate (101–200)		83	105	106	121	127	124						
Poor (201–300)		120	115	114	104	76	81						
Very Poor (301–400)		101	89	72	56	49	64	246	213	206	184	140	169
Severe (>401)		25	9	20	24	15	24						

Comparative status of PM_{2.5} and PM₁₀ (µg/m³) running average - Delhi till December 30 (2016-2021)



Hotspots for Today:

*Details given overleaf

Delhi	Nehru Nagar, Jahangirpuri, R.K. Puram, Dwarka Sector-8, Pusa	Gurugram	Sector-51, NISE Gwal Pahari
Faridabad	Sector-16A, Sector-30	Greater Noida	Knowledge Park-III
Ghaziabad	Loni, Sanjay Nagar	Noida	Sector-125, Sector-1

Forecast by IITM:

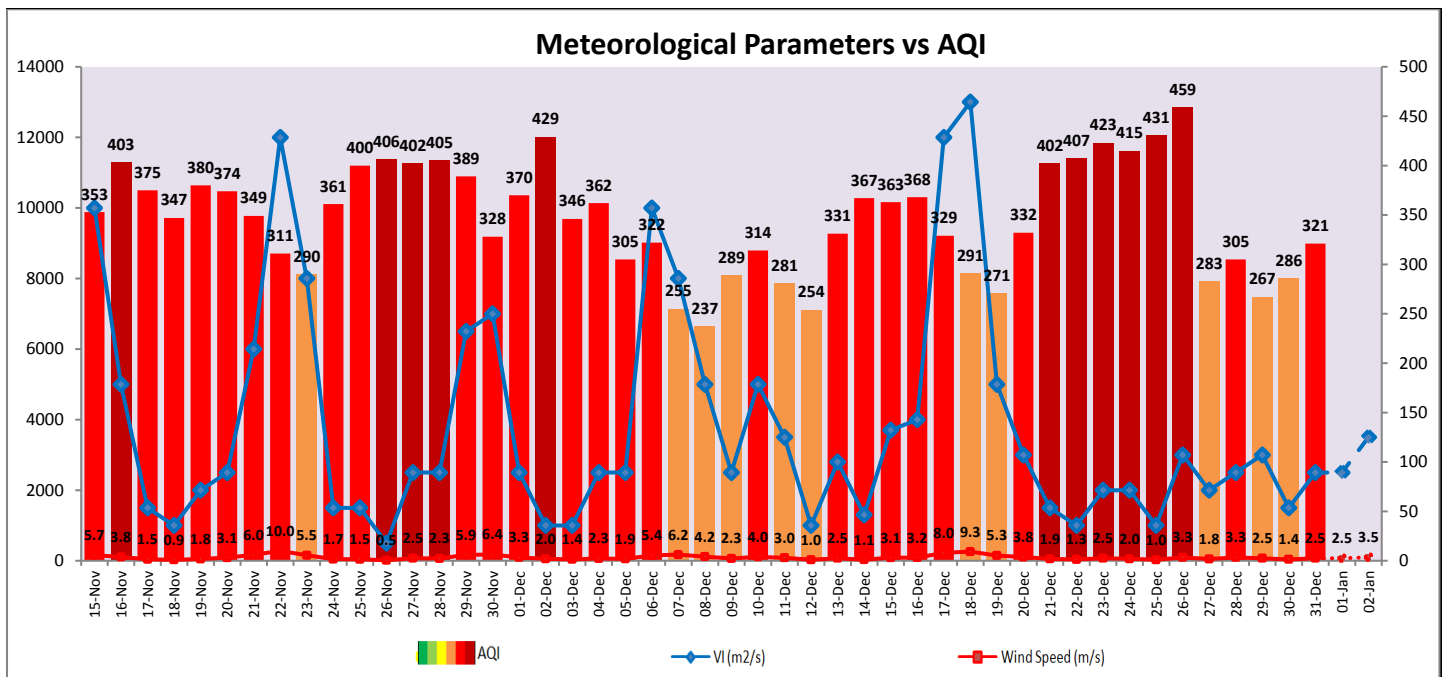
Parameters	January 01, 2022		January 02, 2022-January 03, 2022	
	Concentration	AQI Category	Concentration	AQI Category
PM ₁₀	334	Poor	389	Very Poor
PM _{2.5}	177	Very Poor	191	Very Poor

▪ **Wind Forecast for Delhi:**

Dates	Wind speed (at surface) in km/h		Wind speed (at 900 m) in km/h	Wind Direction	
	As per IMD (at 17:30 hrs.)	As per windy.com (at 16:00 hrs.)	As per windy.com (at 16:00hrs)	As per IMD (at 17:30hrs.)	As per windy.com at 900m
January 01, 2022	06	08	13	NW	N
January 02, 2022	08	09	12	NW	N
January 03, 2022	12	09	19	NW	NW

▪ **IMD Alert for Tomorrow (01.01.2022):**

The air quality is likely to remain in lower end of Very Poor to Poor category on 01.01.2022 and lower end of very poor category on 02.01.2022. The predominant surface wind is likely to be coming from Northwest direction of Delhi having wind speed 06-08 kmph, mainly clear sky and shallow to moderate fog in the morning. Ventilation index is likely to be 2,500 m²/s.



▪ **Hotspots for Today**

City	Station Name	AQI value	Air Quality	Prominent Pollutant
Delhi	Nehru Nagar, Delhi - DPCC	408	Severe	PM ₁₀
	Jahangirpuri, Delhi - DPCC	401	Severe	PM _{2.5}
	R K Puram, Delhi - DPCC	381	Very Poor	PM _{2.5}
	Dwarka-Sector 8, Delhi - DPCC	374	Very Poor	PM ₁₀
	Pusa, Delhi - DPCC	371	Very Poor	PM _{2.5}
Faridabad	Sector 30, Faridabad - HSPCB	339	Very Poor	PM _{2.5}
	Sector- 16A, Faridabad - HSPCB	325	Very Poor	PM _{2.5}
Gurugram	Sector-51, Gurugram - HSPCB	354	Very Poor	PM _{2.5}
	NISE Gwal Pahari, Gurugram - IMD	251	Poor	PM _{2.5}
Ghaziabad	Loni, Ghaziabad - UPPCB	379	Very Poor	PM _{2.5}
	Sanjay Nagar, Ghaziabad - UPPCB	258	Poor	PM _{2.5}
Greater Noida	Knowledge Park - III, Greater Noida - UPPCB	245	Poor	PM _{2.5}
Noida	Sector - 125, Noida - UPPCB	276	Poor	PM _{2.5}
	Sector-1, Noida - UPPCB	274	Poor	PM _{2.5}