



Central Pollution Control Board

Air Quality Status for Delhi & NCR

Dated – May 31, 2022



Current Air Quality Status:

Air Quality Index (AQI) (Average of past 24 hours)

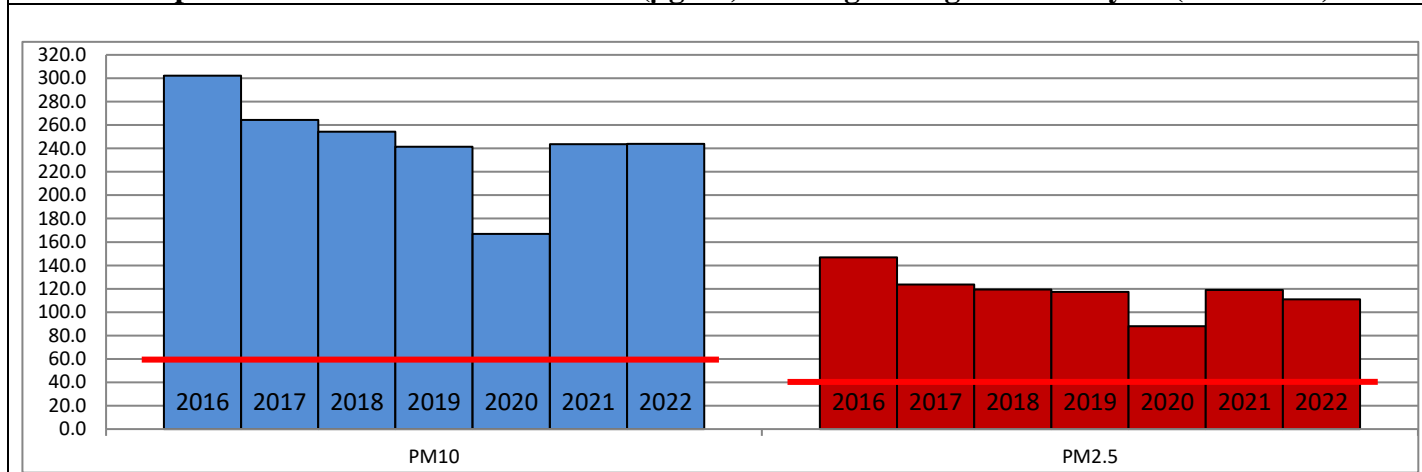
	Air Quality	AQI Value	Prominent Pollutant
Delhi	Poor	215↓	PM _{2.5} , PM ₁₀
Faridabad	Poor	202↓	PM _{2.5} , PM ₁₀
Ghaziabad	Poor	226↑	PM ₁₀ , O ₃
Greater Noida	Moderate	188↓	PM ₁₀
Gurugram	Poor	202↑	PM _{2.5} , PM ₁₀
Noida	Poor	228↑	PM ₁₀

*Data available for 31 stations in Delhi today. # ↓, ↑ arrows indicate a decrease/increase as compared to value on the previous day.

Comparative status of AQI - Delhi from 01 January to 31 May 2016-2022

Category	Year	2016	2017	2018	2019	2020	2021	2022	2016	2017	2018	2019	2020	2021	2022
	No. of days	148	151	151	151	152	151	151							
Good (0–50)		0	0	0	0	1	0	0							
Satisfactory (51–100)		0	0	1	2	29	6	4	15	36	44	59	98	59	37
Moderate (101–200)		15	36	43	57	68	53	33							
Poor (201–300)		75	79	77	59	37	54	95							
Very Poor (301–400)		52	36	27	26	15	32	18	133	115	107	92	54	92	114
Severe (>401)		6	0	3	7	2	6	1							

Comparative status of PM_{2.5} and PM₁₀ (µg/m³) running average – Till May 26 (2016-2022)



Hotspots for Today:

*Details given overleaf

Delhi	Chandni Chowk, Patparganj, CRRI Mathura Road, ITO, Narela	Gurugram	Teri Gram
Faridabad	Sector-11	Greater Noida	Knowledge Park-V
Ghaziabad	Loni, Indirapuram	Noida	Sector-1

Forecast by IITM (Delhi):

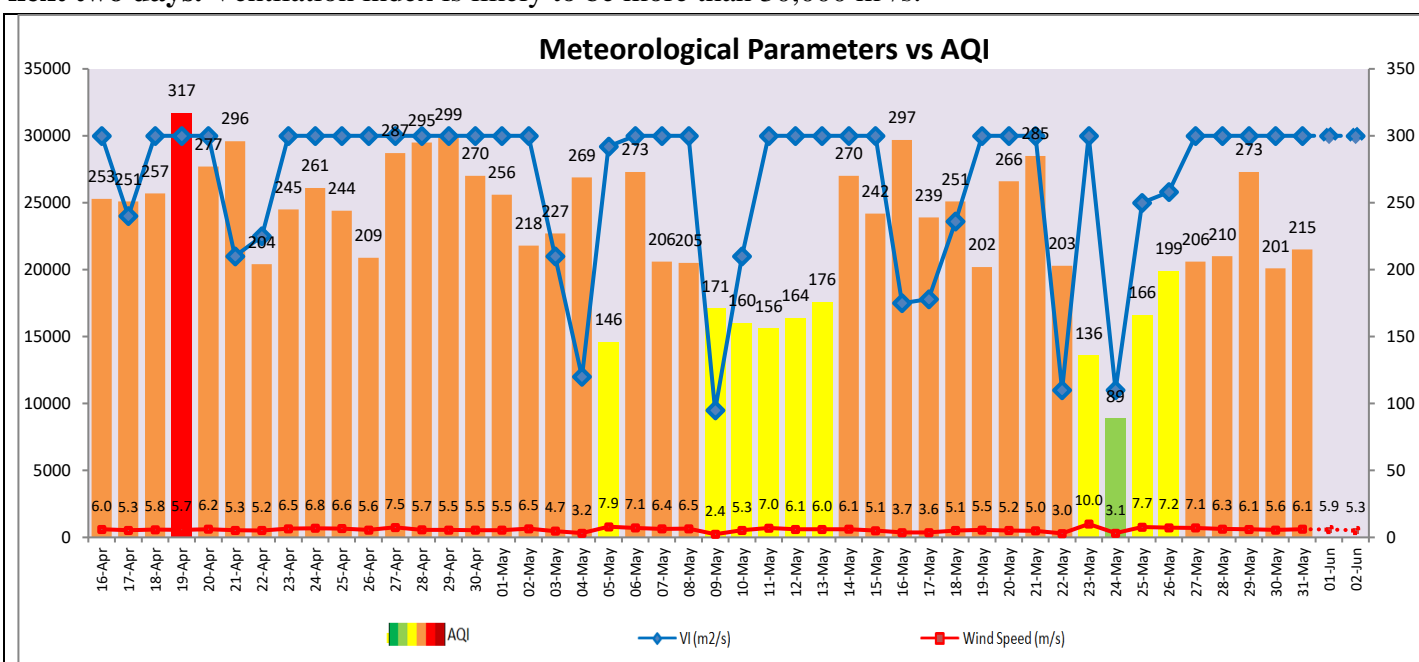
Parameters	June 01, 2022		June 02, 2022- June 03, 2022	
	Concentration	AQI Category	Concentration	AQI Category
PM ₁₀	269	Poor	314	Poor
PM _{2.5}	84	Moderate	98	Poor

Wind Forecast for Delhi:

	Wind speed (at surface) in km/h		Wind speed (at 900 m) in km/h	Wind Direction	
	As per IMD (at 17:30 hrs.)	As per windy.com (at 16:00 hrs.)	As per windy.com (at 16:00hrs)	As per IMD (at 17:30hrs.)	As per windy.com at 900m
June 01, 2022	12	07	15	W	NW
June 02, 2022	10	09	24	W	NW
June 03, 2022	08	14	23	W	NW

IMD Alert for Tomorrow (01.06.2022):

The air quality is likely to remain in Moderate to Lower end of Poor category from 01.06.2022 to 02.06.2022. The predominant surface wind is likely to be coming from Northwest/West direction in Delhi with wind speed 12- 20 kmph, mainly clear sky and strong surface winds (speed 20-30 kmph) during the day tomorrow. **Long range transported dust will impact air quality over parts of Rajasthan, Gujarat, MP and NCR during next two days.** Ventilation index is likely to be more than 30,000 m²/s.



Hotspots for Today

City	Station Name	AQI value	Air Quality	Prominent Pollutant
Delhi	Chandni Chowk, Delhi - IITM	286	Poor	PM _{2.5}
	Patparganj, Delhi - DPCC	277	Poor	O ₃
	CRRI Mathura Road, Delhi - IMD	246	Poor	PM ₁₀
	ITO, Delhi - CPCB	239	Poor	PM _{2.5}
	Narela, Delhi - DPCC	239	Poor	PM ₁₀
Faridabad	Sector 11, Faridabad - HSPCB	234	Poor	PM _{2.5}
Gurugram	Teri Gram, Gurugram - HSPCB	229	Poor	PM ₁₀
Ghaziabad	Indirapuram, Ghaziabad - UPPCB	253	Poor	O ₃
	Loni, Ghaziabad - UPPCB	248	Poor	PM ₁₀
Greater Noida	Knowledge Park - V, Greater Noida - UPPCB	194	Moderate	PM ₁₀
Noida	Sector-1, Noida - UPPCB	253	Poor	O ₃