



# Central Pollution Control Board

## Air Quality Status for Delhi & NCR

Dated – January 31, 2022



### Current Air Quality Status:

#### Air Quality Index (AQI) (Average of past 24 hours)

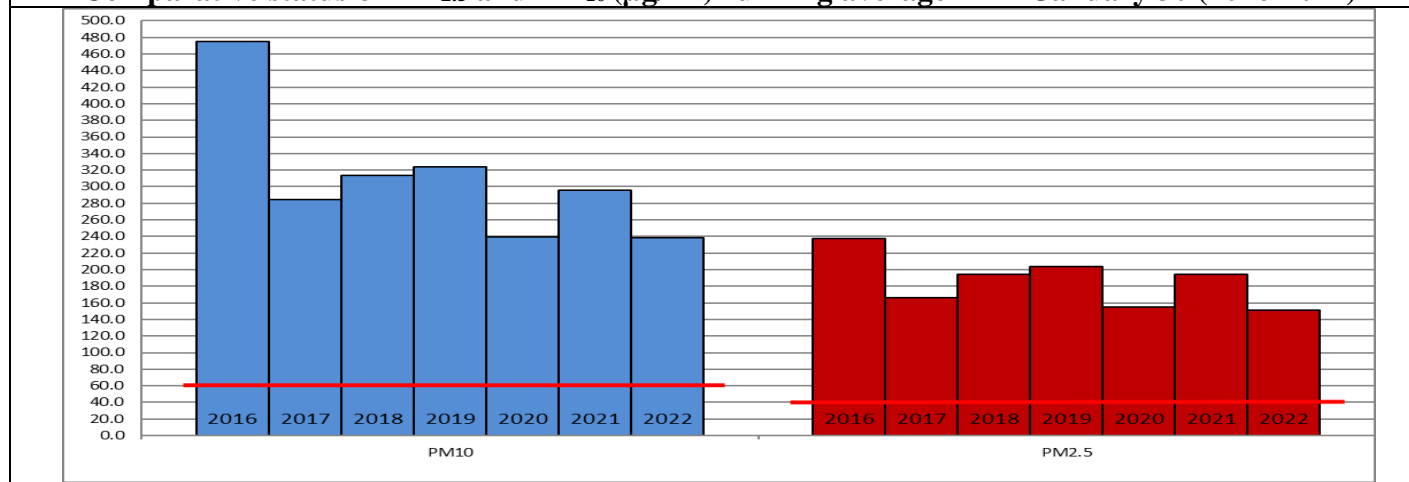
	Air Quality	AQI Value	Prominent Pollutant
Delhi	Very Poor	338↑	PM <sub>10</sub> , PM <sub>2.5</sub>
Faridabad	Very Poor	330↑	PM <sub>2.5</sub>
Ghaziabad	Very Poor	328↑	PM <sub>2.5</sub>
Greater Noida	Poor	289↑	PM <sub>2.5</sub>
Gurugram	Poor	248↑	PM <sub>2.5</sub>
Noida	Very Poor	304↑	PM <sub>2.5</sub>

\*Data available for 32 stations in Delhi today. # ↑ ↓ arrows indicate increase/decrease as compared to value on the previous day

#### Comparative status of AQI - Delhi from 01 January to 31 January 2016-2022

Category	Year	2016	2017	2018	2019	2020	2021	2022	2016	2017	2018	2019	2020	2021	2022
	No. of days	31	31	31	31	31	31	31							
Good (0–50)		0	0	0	0	0	0	0							
Satisfactory (51–100)		0	0	0	0	0	0	2	0	2	0	2	3	2	5
Moderate (101–200)		0	2	0	2	3	2	3							
Poor (201–300)		2	9	10	9	16	9	12							
Very Poor (301–400)		23	20	18	13	10	14	13	31	29	31	29	28	29	26
Severe (>401)		6	0	3	7	2	6	1							

#### Comparative status of PM<sub>2.5</sub> and PM<sub>10</sub> (µg/m<sup>3</sup>) running average – Till January 30 (2016-2022)



#### Hotspots for Today:

\*Details given overleaf

Delhi	Anand Vihar, Jahangirpuri, Nehru Nagar, Wazirpur, Punjabi Bagh	Gurugram	Sector-51, Teri Gram
Faridabad	Sector-16A, New Industrial Town	Greater Noida	Knowledge Park – III
Ghaziabad	Loni, Vasundhara	Noida	Sector -116, Sector - 1

#### Forecast by IITM:

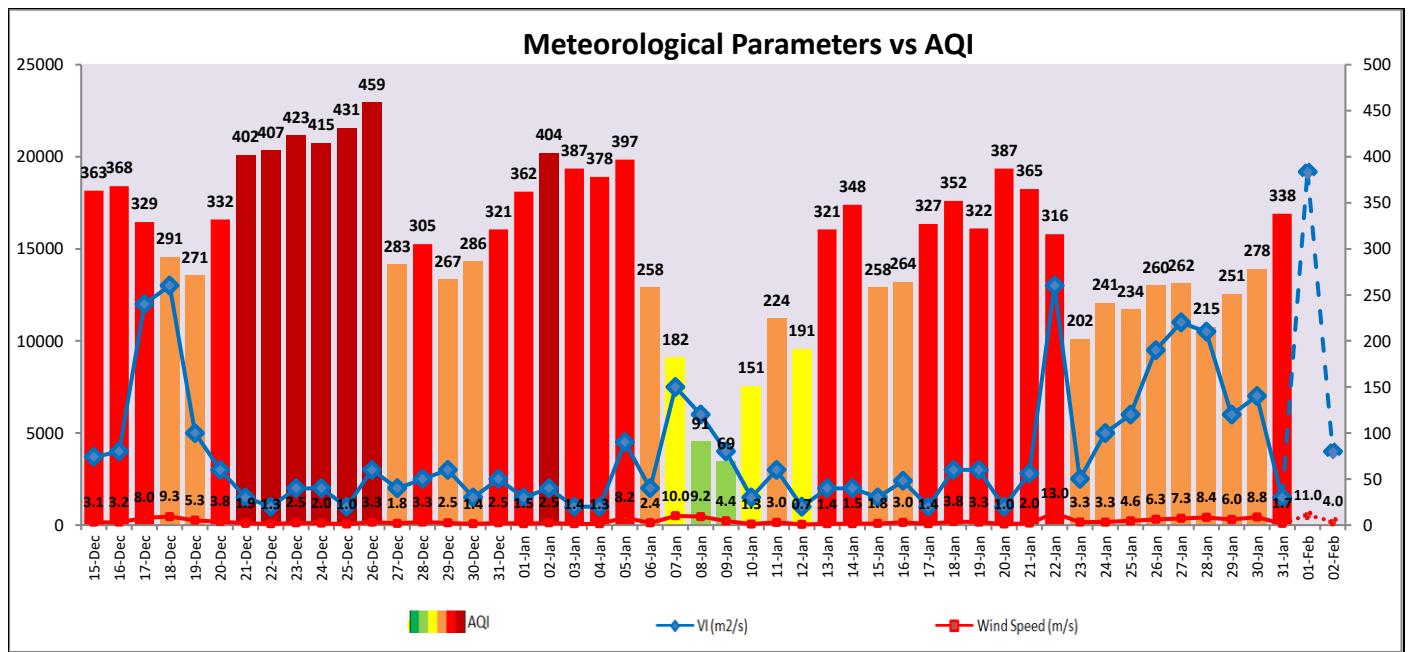
Parameters	February 01, 2022		February 02, 2022- February 03, 2022	
	Concentration	AQI Category	Concentration	AQI Category
PM <sub>10</sub>	279	Poor	178	Moderate
PM <sub>2.5</sub>	162	Very Poor	103	Poor

▪ **Wind Forecast for Delhi:**

	Wind speed (at surface) in km/h		Wind speed (at 900 m) in km/h	Wind Direction	
	As per IMD (at 17:30 hrs.)	As per windy.com (at 16:00 hrs.)	As per windy.com (at 16:00hrs)	As per IMD (at 17:30hrs.)	As per windy.com at 900m
February 01, 2022	12	11	35	NW	NW
February 02, 2022	06	03	09	ESE	SW
February 03, 2022	28	09	32	SE	SE

▪ **IMD Alert for Tomorrow (01.02.2022):**

The air quality is likely to deteriorate marginally but remain in lower end of very Poor category on 01.02.2022 and Poor category on 02.02.2022. The predominant surface wind is likely to be coming from Northwest direction of Delhi having wind speed 12-18 kmph with mainly clear sky, mist in the morning and strong surface winds (speed 25-35 kmph) during the day tomorrow. Ventilation index is likely to be 19,200 m<sup>2</sup>/s.



▪ **Hotspots for Today**

City	Station Name	AQI value	Air Quality	Prominent Pollutant
Delhi	Anand Vihar, Delhi - DPCC	454	Severe	PM <sub>10</sub>
	Jahangirpuri, Delhi - DPCC	397	Very Poor	PM <sub>2.5</sub>
	Nehru Nagar, Delhi - DPCC	394	Very Poor	PM <sub>2.5</sub>
	Wazirpur, Delhi - DPCC	370	Very Poor	PM <sub>2.5</sub>
	Punjabi Bagh, Delhi - DPCC	368	Very Poor	PM <sub>2.5</sub>
Faridabad	Sector- 16A, Faridabad - HSPCB	327	Very Poor	PM <sub>2.5</sub>
	New Industrial Town, Faridabad - HSPCB	322	Very Poor	PM <sub>2.5</sub>
Gurugram	Sector-51, Gurugram - HSPCB	341	Very Poor	PM <sub>2.5</sub>
	Teri Gram, Gurugram - HSPCB	204	Poor	PM <sub>2.5</sub>
Ghaziabad	Loni, Ghaziabad - UPPCB	386	Very Poor	PM <sub>2.5</sub>
	Vasundhara, Ghaziabad - UPPCB	300	Poor	PM <sub>2.5</sub>
Greater Noida	Knowledge Park - III, Greater Noida - UPPCB	282	Poor	PM <sub>2.5</sub>
Noida	Sector-1, Noida - UPPCB	311	Very Poor	PM <sub>2.5</sub>
	Sector-116, Noida - UPPCB	289	Poor	PM <sub>2.5</sub>