



Central Pollution Control Board

Air Quality Status for Delhi & NCR

Dated – December 30, 2022



Current Air Quality Status:

Air Quality Index (AQI) (Average of past 24 hours)

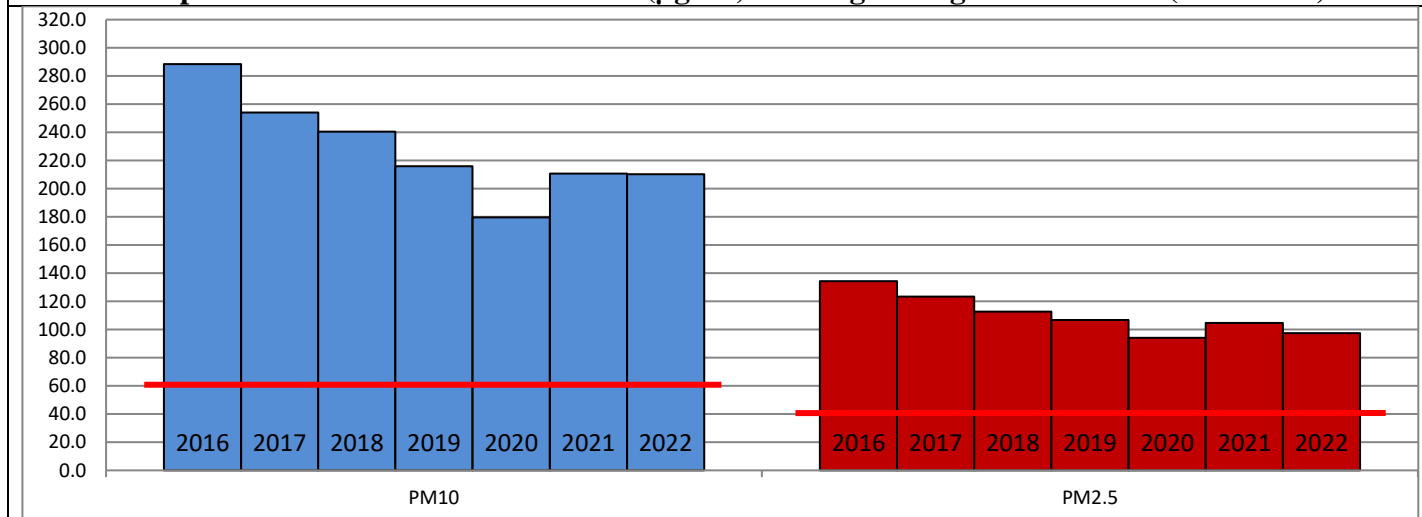
	Air Quality	AQI Value	Prominent Pollutant
Delhi	Very Poor	399 ↑	PM _{2.5}
Faridabad	Very Poor	346 ↑	PM _{2.5}
Ghaziabad	Very Poor	336 ↑	PM _{2.5}
Greater Noida	Very Poor	374 ↑	PM _{2.5}
Gurugram	Very Poor	348 ↑	PM _{2.5}
Noida	Very Poor	344 ↑	PM _{2.5}

*Data available for 39 stations in Delhi today. # ↑ ↓ arrows indicate a decrease/increase as compared to the value on the previous day.

Comparative status of AQI - Delhi from 01 January to 30 December 2016-2022

Category	Year	2016	2017	2018	2019	2020	2021	2022	2016	2017	2018	2019	2020	2021	2022
	No. of days	353	364	364	364	365	364	364							
Good (0–50)		0	2	0	2	5	1	3							
Satisfactory (51–100)		24	45	53	59	95	81	65	110	152	159	182	227	197	163
Moderate (101–200)		86	105	106	121	127	115	95							
Poor (201–300)		120	115	114	103	75	80	130							
Very Poor (301–400)		98	88	72	55	48	63	65	243	212	205	182	138	167	201
Severe (>401)		25	9	19	24	15	24	6							

Comparative status of PM₁₀ and PM_{2.5} (µg/m³) running average – Till Dec 29 (2016-2022)



Hotspots for Today:

*Details given overleaf

Delhi	Mundka, Wazirpur, Nehru Nagar, Bawana, Narela	Ghaziabad	Loni, Vasundhara
Faridabad	Sector-16A, New Industrial Town	Greater Noida	Knowledge Park -III
Gurugram	Sector-51, NISE Gwal Pahari	Noida	Sector-62, Sector-116

Forecast by IITM (Delhi):

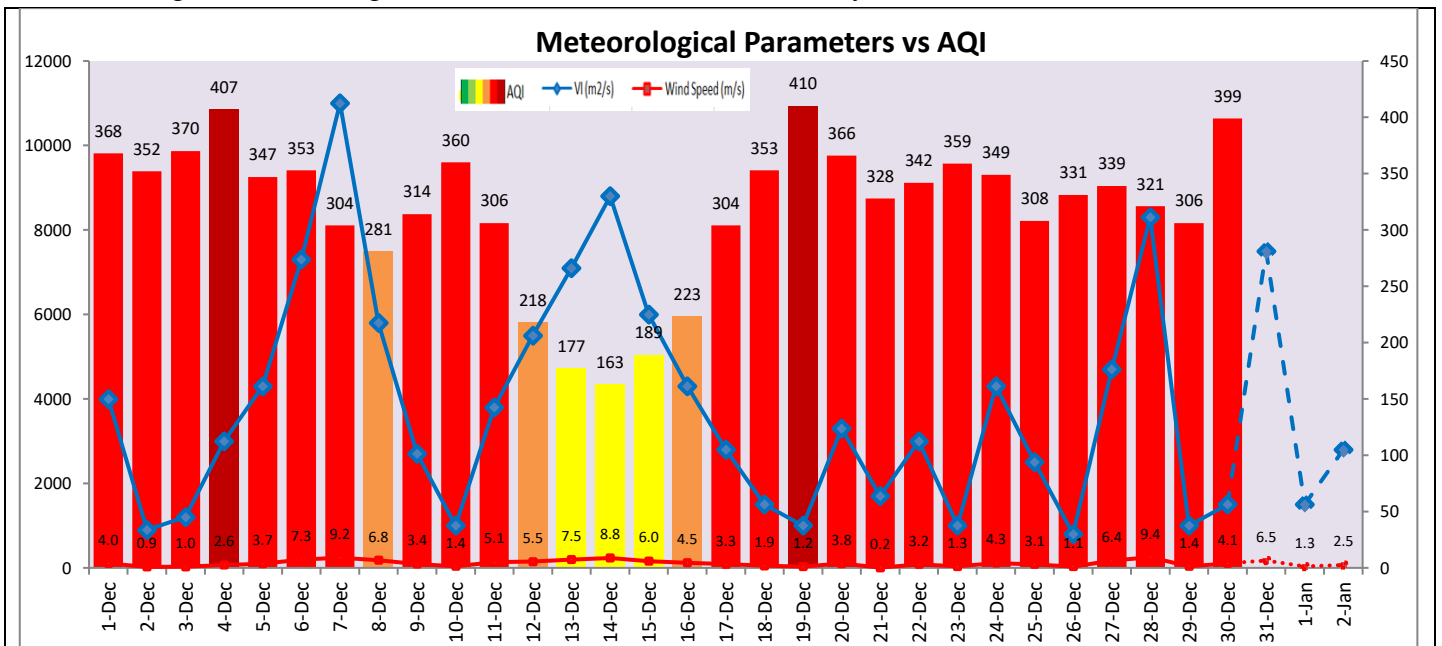
	Dec 31, 2022		Jan 01, 2023- Jan 02, 2023	
	Concentration	AQI Category	Concentration	AQI Category
PM ₁₀	339	Poor	371	Very Poor
PM _{2.5}	223	Very Poor	244	Very Poor

Wind Forecast for Delhi:

	Wind speed (at surface) in km/h		Wind speed (at 900 m) in km/h	Wind Direction	
	As per IMD (range)	As per windy.com (at 16:00 hrs.)	As per windy.com (at 16:00hrs)	As per IMD	As per windy.com at 900m
Dec 31, 2022	08-15	09	27	NW	NW
Jan 01, 2023	04-06	06	09	NW/NE	NW
Jan 02, 2023	04-08	05	04	N/NW	NW

IMD Alert for Tomorrow (31.12.2022):

The air quality is likely to remain in Severe category on 31.12.2022 and 01.01.2023. The predominant surface wind is likely to be coming from Northwest direction in Delhi with wind speed 08-15 kmph, mainly clear sky and dense fog in the morning tomorrow. Ventilation index is likely to be 7,500 m²/s.



Hotspots for Today

City	Station Name	AQI value	Air Quality	Prominent Pollutant
Delhi	Mundka, Delhi - DPCC	435	Severe	PM _{2.5}
	Wazirpur, Delhi - DPCC	435	Severe	PM _{2.5}
	Nehru Nagar, Delhi - DPCC	431	Severe	PM _{2.5}
	Bawana, Delhi - DPCC	428	Severe	PM _{2.5}
	Narela, Delhi - DPCC	425	Severe	PM _{2.5}
Faridabad	Sector- 16A, Faridabad - HSPCB	413	Severe	PM _{2.5}
	New Industrial Town, Faridabad - HSPCB	376	Very Poor	PM ₁₀
Gurugram	NISE Gwal Pahari, Gurugram - IMD	366	Very Poor	PM _{2.5}
	Sector-51, Gurugram - HSPCB	361	Very Poor	PM _{2.5}
Ghaziabad	Vasundhara, Ghaziabad - UPPCB	374	Very Poor	PM _{2.5}
	Loni, Ghaziabad - UPPCB	346	Very Poor	PM _{2.5}
Greater Noida	Knowledge Park - III, Greater Noida - UPPCB	395	Very Poor	PM _{2.5}
Noida	Sector-116, Noida - UPPCB	386	Very Poor	PM _{2.5}
	Sector - 62, Noida - IMD	385	Very Poor	PM _{2.5}