



# Central Pollution Control Board

## Air Quality Status for Delhi & NCR

Dated – December 30, 2021



### Current Air Quality Status:

#### Air Quality Index (AQI) (Average of past 24 hours)

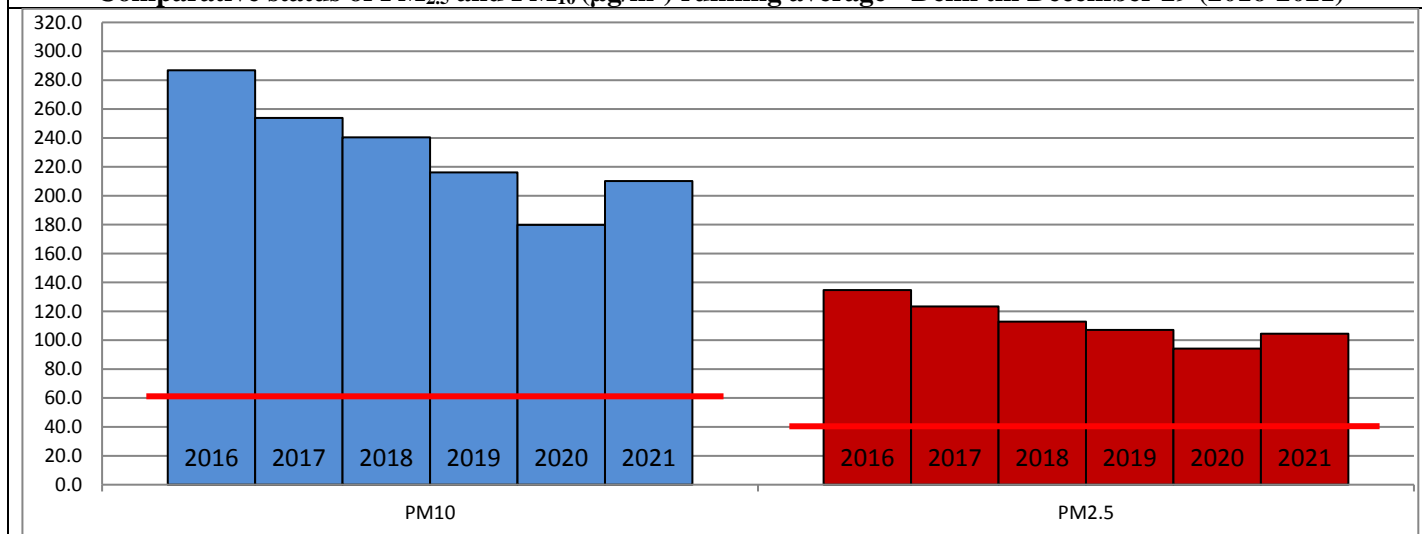
	Air Quality	AQI Value	Prominent Pollutant
Delhi	Poor	286↑	PM <sub>2.5</sub>
Faridabad	Poor	252↓	PM <sub>2.5</sub> , PM <sub>10</sub>
Ghaziabad	Poor	268↑	PM <sub>2.5</sub>
Greater Noida	Moderate	166↓	PM <sub>2.5</sub>
Gurugram	Poor	257↓	PM <sub>2.5</sub>
Noida	Poor	222↓	PM <sub>2.5</sub>

\*Data available for 35 stations in Delhi today. # ↓, ↑ arrows indicate increase/decrease as compared to value on the previous day

#### Comparative status of AQI - Delhi from 01 January to 30 December 2016-2021

Category	Year	2016	2017	2018	2019	2020	2021	2016	2017	2018	2019	2020	2021
	No. of days	353	364	364	365	366	365						
Good (0–50)		0	2	0	2	5	1						
Satisfactory (51–100)		25	45	53	59	95	72	108	152	159	182	227	197
Moderate (101–200)		83	105	106	121	127	124						
Poor (201–300)		120	115	114	104	76	81						
Very Poor (301–400)		100	88	72	55	48	63	245	212	205	183	139	168
Severe (>401)		25	9	19	24	15	24						

#### Comparative status of PM<sub>2.5</sub> and PM<sub>10</sub> (µg/m<sup>3</sup>) running average - Delhi till December 29 (2016-2021)



#### Hotspots for Today:

\*Details given overleaf

Delhi	Nehru Nagar, Jahangirpuri, Ashok Vihar, Mundka, Chandni Chowk	Gurugram	Sector-51, Vikas Sadan
Faridabad	Sector-16A, Sector-11	Greater Noida	Knowledge Park-III
Ghaziabad	Loni, Sanjay Nagar	Noida	Sector-116, Sector-1

#### Forecast by IITM:

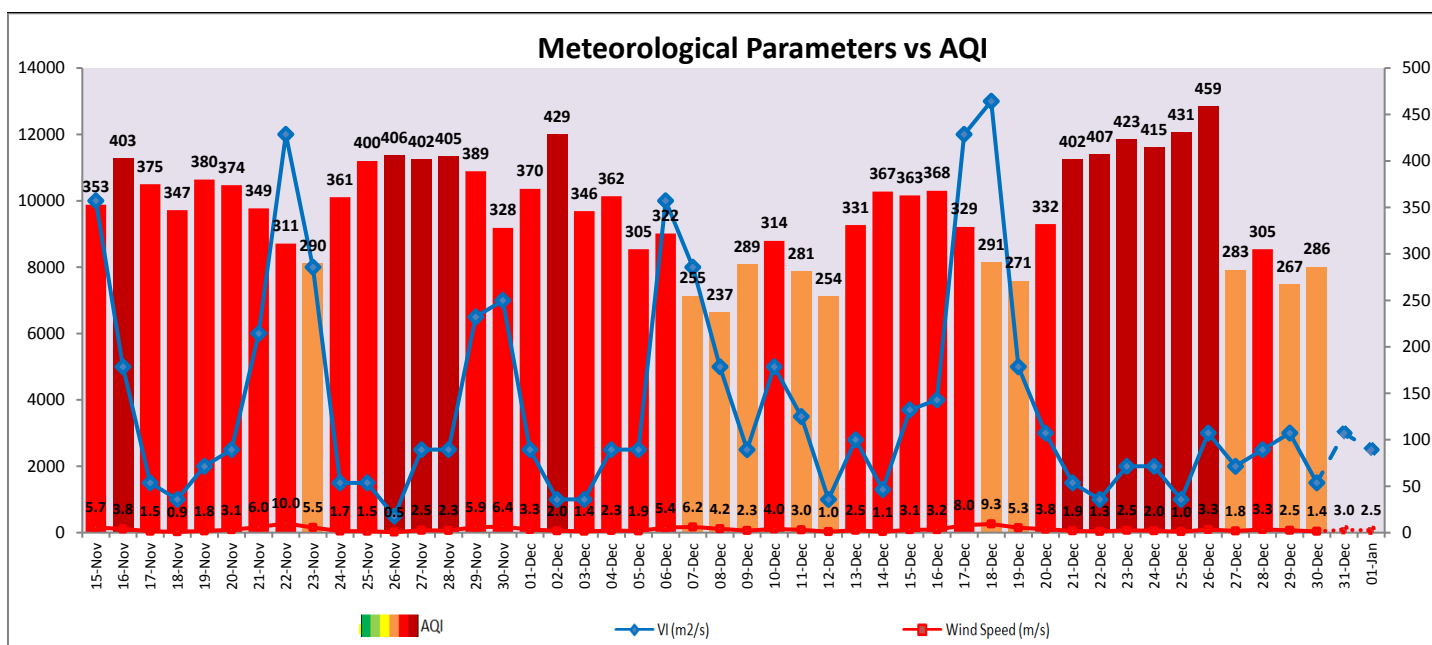
Parameters	December 31, 2021		January 1, 2022- January 2, 2022	
	Concentration	AQI Category	Concentration	AQI Category
PM <sub>10</sub>	284	Poor	332	Poor
PM <sub>2.5</sub>	156	Very Poor	182	Very Poor

■ **Wind Forecast for Delhi:**

Dates	Wind speed (at surface) in km/h		Wind speed (at 900 m) in km/h	Wind Direction	
	As per IMD (at 17:30 hrs.)	As per windy.com (at 16:00 hrs.)	As per windy.com (at 16:00hrs)	As per IMD (at 17:30hrs.)	As per windy.com at 900m
December 31, 2021	05	09	06	WNW	NW
January 01, 2022	05	10	10	NW	N
January 02, 2022	08	09	18	WNW	NW

■ **IMD Alert for Tomorrow (31.12.2021):**

The air quality is likely to deteriorate marginally but remain in lower end of Very Poor category on 31.12.2021 and 01.01.2022. The predominant surface wind is likely to be coming from West-Northwest direction of Delhi having wind speed 05-08 kmph with partly cloudy sky, shallow to moderate fog in the morning and cold wave conditions at isolated places. Ventilation index is likely to be 3,000 m<sup>2</sup>/s.



■ **Hotspots for Today**

City	Station Name	AQI value	Air Quality	Prominent Pollutant
Delhi	Jahangirpuri, Delhi - DPCC	383	Very Poor	PM <sub>2.5</sub>
	Ashok Vihar, Delhi - DPCC	372	Very Poor	PM <sub>2.5</sub>
	Nehru Nagar, Delhi - DPCC	370	Very Poor	PM <sub>2.5</sub>
	Chandni Chowk, Delhi - IITM	337	Very Poor	PM <sub>2.5</sub>
	Mundka, Delhi - DPCC	337	Very Poor	PM <sub>2.5</sub>
Faridabad	Sector- 16A, Faridabad - HSPCB	287	Poor	PM <sub>2.5</sub>
	Sector 11, Faridabad - HSPCB	252	Poor	PM <sub>2.5</sub>
Gurugram	Sector-51, Gurugram - HSPCB	314	Very Poor	PM <sub>2.5</sub>
	Vikas Sadan, Gurugram - HSPCB	306	Very Poor	PM <sub>2.5</sub>
Ghaziabad	Loni, Ghaziabad - UPPCB	333	Very Poor	PM <sub>2.5</sub>
	Sanjay Nagar, Ghaziabad - UPPCB	257	Poor	PM <sub>2.5</sub>
Greater Noida	Knowledge Park - III, Greater Noida - UPPCB	190	Moderate	PM <sub>2.5</sub>
Noida	Sector-1, Noida - UPPCB	230	Poor	PM <sub>2.5</sub>
	Sector-116, Noida - UPPCB	219	Poor	PM <sub>2.5</sub>