



Central Pollution Control Board

Air Quality Status for Delhi &NCR

Dated – November 30, 2021



Current Air Quality Status:

Air Quality Index (AQI) (Average of past 24 hours)

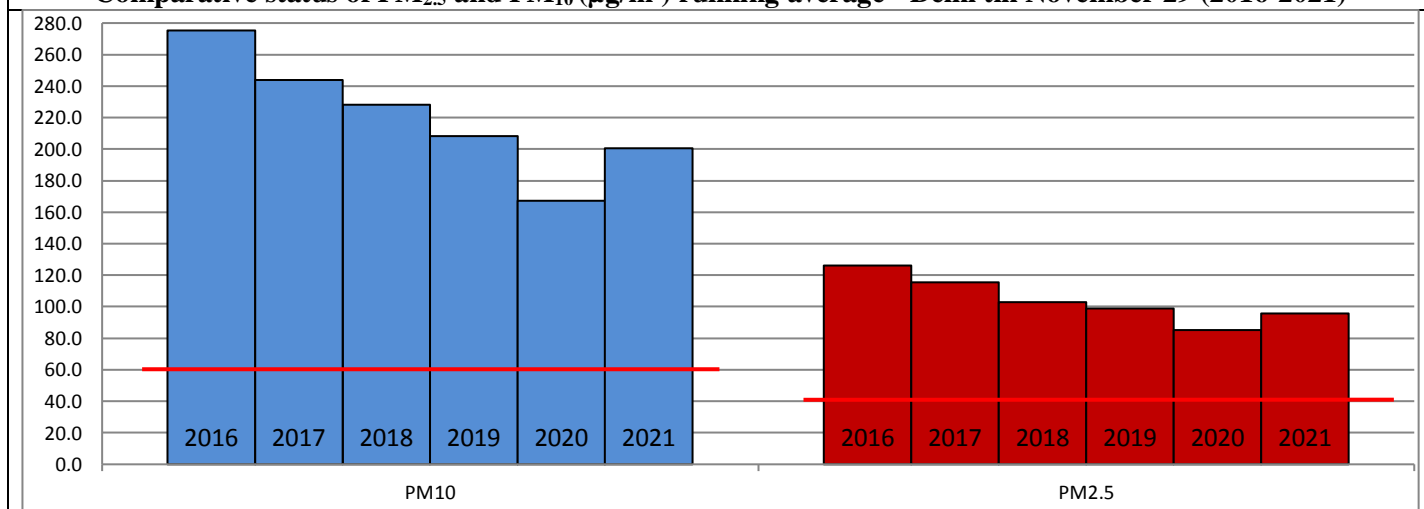
	Air Quality	AQI Value	Prominent Pollutant
Delhi	Very Poor	328↓	PM _{2.5}
Faridabad	Very Poor	331↑	PM ₁₀ , PM _{2.5}
Ghaziabad	Poor	287↓	PM _{2.5}
Greater Noida	Poor	254↓	PM _{2.5}
Gurugram	Very Poor	332↓	PM _{2.5}
Noida	Poor	291↓	PM ₁₀ , PM _{2.5}

*Data available for 30 stations in Delhi today. # ↓, ↑ arrows indicate increase/decrease as compared to value on the previous day

Comparative status of AQI - Delhi from 01 January to 30 November 2016-2021

Category	Year No. of days	2016	2017	2018	2019	2020	2021	2016	2017	2018	2019	2020	2021
		323	334	334	335	336	335	2016	2017	2018	2019	2020	2021
Good (0-50)	0	2	0	2	5	1							
Satisfactory (51-100)	25	45	53	59	95	72	108	150	158	179	226	197	
Moderate (101-200)	83	103	105	118	126	124							
Poor (201-300)	119	105	110	97	66	71							
Very Poor (301-400)	77	71	54	43	33	50	215	184	176	156	110	138	
Severe (>401)	19	8	12	16	11	17							

Comparative status of PM_{2.5} and PM₁₀ (µg/m³) running average - Delhi till November 29 (2016-2021)



* The PM values are 24 hourly averages (6 am to 6 am)

Hotspots for Today:

*Details given overleaf

Delhi	Nehru Nagar, NSIT Dwarka, Mundka, Anand Vihar, Jahangirpuri	Gurugram	Teri Gram, NISE Gwal Pahari
Faridabad	Sector-11, New Industrial Town	Greater Noida	Knowledge Park – III
Ghaziabad	Loni, Indirapuram	Noida	Sector -1, Sector - 62

Forecast by IITM:

Parameters	December 01, 2021		December 02, 2021– December 03, 2021	
	Concentration	AQI Category	Concentration	AQI Category
PM ₁₀	236	Moderate	381	Poor
PM _{2.5}	126	Very Poor	203	Very Poor

■ **Wind Forecast for Delhi:**

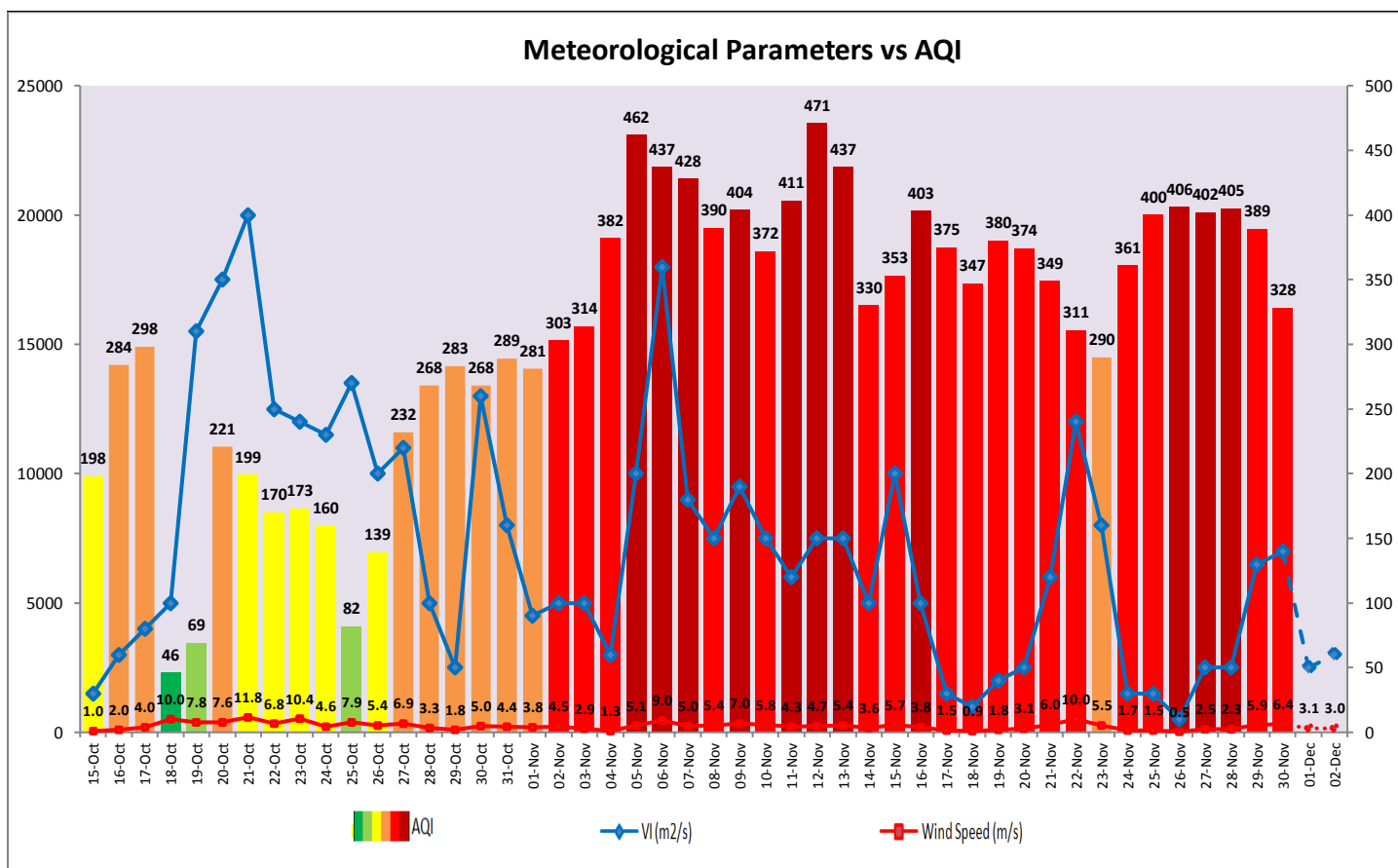
Dates	Wind speed (at surface) in km/h		Wind speed (at 900 m) in km/h	Wind Direction	
	As per IMD (at 17:30 hrs.)	As per windy.com (at 16:00 hrs.)	As per windy.com (at 16:00hrs)	As per IMD (at 17:30hrs.)	As per windy.com at 900m
December 01, 2021	12	08	13	NW	N
December 02, 2021	04	05	31	NNW	NW
December 03, 2021	04	07	12	WSW	E

■ **IMD Alert for Tomorrow (30.11.2021):**

The air quality is likely to deteriorate but remain in Very Poor category as winds are becoming slow/calm on 1st December. The predominant surface wind is likely to be calm during morning hours, coming from North-Northwest directions of Delhi with wind speed upto 04 kmph, mainly clear sky and shallow fog in the morning. Ventilation index is likely to be 2,500 m²/s.

■ **Active Fire Events (AFEs)**

Date	Punjab		Haryana	
	Nos. on the day	Total since September 21	Nos. on the day	Total since September 21
29.11.2021	8	71299	14	6969
29.11.2020	55	82981	65	4185



▪ Hotspots for Today

City	Station Name	AQI value	Air Quality	Prominent Pollutant
Delhi	Nehru Nagar, Delhi - DPCC	381	Very Poor	PM _{2.5}
	NSIT Dwarka, Delhi - CPCB	372	Very Poor	PM _{2.5}
	Mundka, Delhi - DPCC	368	Very Poor	PM _{2.5}
	Anand Vihar, Delhi - DPCC	364	Very Poor	PM ₁₀
	Jahangirpuri, Delhi - DPCC	356	Very Poor	PM _{2.5}
Faridabad	Sector 11, Faridabad - HSPCB	354	Very Poor	PM ₁₀
	New Industrial Town, Faridabad - HSPCB	330	Very Poor	PM ₁₀
Gurugram	Teri Gram, Gurugram - HSPCB	357	Very Poor	PM _{2.5}
	NISE Gwal Pahari, Gurugram - IMD	334	Very Poor	PM _{2.5}
Ghaziabad	Loni, Ghaziabad - UPPCB	338	Very Poor	PM _{2.5}
	Indirapuram, Ghaziabad - UPPCB	290	Poor	PM _{2.5}
Greater Noida	Knowledge Park - III, Greater Noida - UPPCB	278	Poor	PM _{2.5}
Noida	Sector - 62, Noida - IMD	325	Very Poor	PM ₁₀
	Sector-1, Noida - UPPCB	285	Poor	PM _{2.5}