



Central Pollution Control Board

Air Quality Status for Delhi & NCR

Dated – October 30, 2021



Current Air Quality Status:

Air Quality Index (AQI) (Average of past 24 hours)

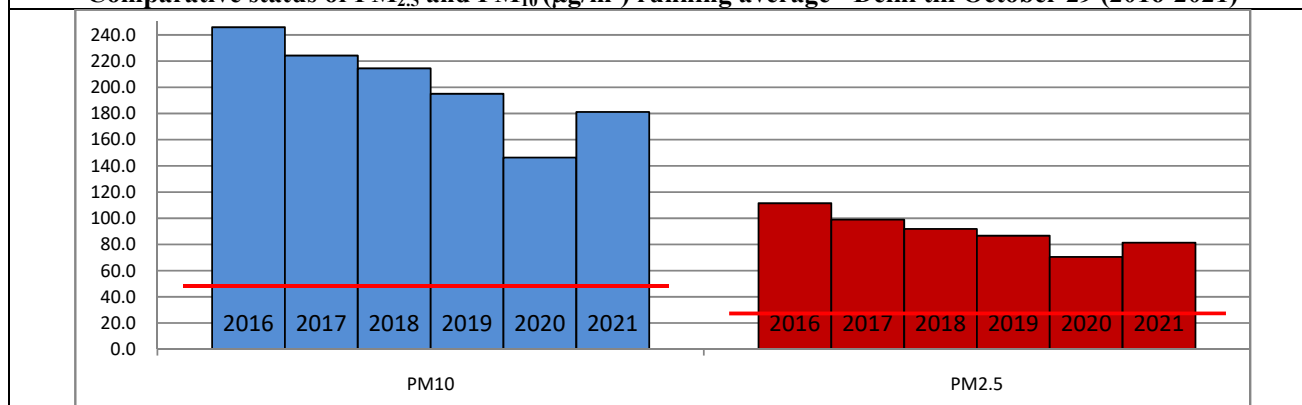
	Air Quality	AQI Value	Prominent Pollutant
Delhi	Poor	268 ↓	PM ₁₀ , PM _{2.5}
Faridabad	Poor	268 ↓	PM ₁₀ , PM _{2.5}
Ghaziabad	Poor	297 ↓	PM _{2.5}
Greater Noida	Poor	273 ↓	PM ₁₀ , PM _{2.5}
Gurugram	Poor	272 ↓	PM _{2.5}
Noida	Poor	260 ↓	PM ₁₀ , PM _{2.5}

*Data available for 35 stations in Delhi today. # ↓, ↑ arrows indicate increase/decrease as compared to value on the previous day

Comparative status of AQI - Delhi from 01 January to 30 October 2016-2021

Category	Year	2016	2017	2018	2019	2020	2021	2016	2017	2018	2019	2020	2021
	No. of days	292	303	303	303	304	303						
Good (0–50)		0	2	0	2	5	1						
Satisfactory (51–100)		25	45	53	58	95	72	108	150	157	175	224	197
Moderate (101–200)		83	103	104	115	124	124						
Poor (201–300)		116	102	103	88	55	67						
Very Poor (301–400)		60	50	36	32	23	33	184	153	146	128	80	106
Severe (>401)		8	1	7	8	2	6						

Comparative status of PM_{2.5} and PM₁₀ (µg/m³) running average - Delhi till October 29 (2016-2021)



Hotspots for Today:

*Details given overleaf

Delhi	Shadipur, NSIT Dwarka, Dwarka-Sector 8, Jahangirpuri, Anand Vihar	Greater Noida	Knowledge Park - V
Faridabad	Sector 11, Sector 30	Gurugram	Sector 51, Teri Gram
Ghaziabad	Loni, Vasundhara	Noida	Sector 116, Sector 125

Forecast by IITM:

Parameters	October 31, 2021		November 01, 2021– November 02, 2021	
	Concentration	AQI Category	Concentration	AQI Category
PM ₁₀	210	Moderate	284	Poor
PM _{2.5}	96	Poor	130	Very Poor

▪ **Wind Forecast for Delhi:**

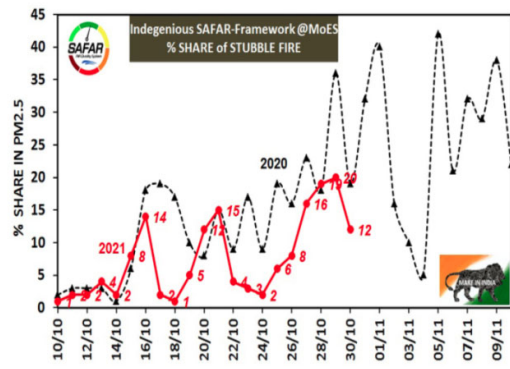
Dates	Wind speed (at surface) in km/h		Wind speed (at 900 m) in km/h	Wind Direction	
	As per IMD (at 17:30 hrs.)	As per windy.com (at 16:00 hrs.)	As per windy.com (at 16:00hrs)	As per IMD (at 17:30hrs.)	As per windy.com at 900m
October 31, 2021	08	08	22	NE	NW
November 01, 2021	12	09	08	ESE	SE
November 02, 2021	08	08	11	ENE	S

▪ **IMD Alert for Tomorrow (31.10.2021):**

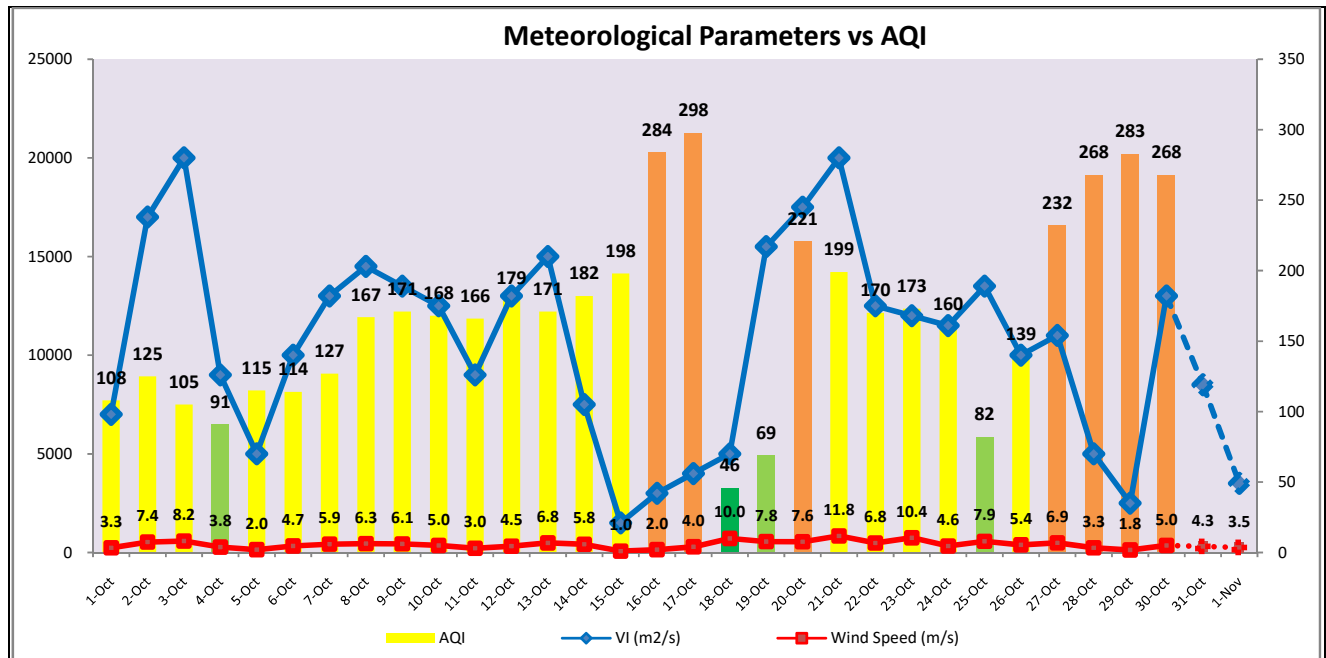
The air quality over Delhi-NCT is likely to remain in lower end of Poor category tomorrow. The predominant surface wind is likely to be coming from West directions of Delhi with wind speed of 08-12 kmph, mainly clear sky and mist in the morning. Ventilation index is likely to be 8,000 m²/s.

▪ **Active Fire Events (AFE)**

Date	Punjab		Haryana	
	Nos. on the day	Total since September 21	Nos. on the day	Total since September 21
29.10.2021	1353	9001	161	2413
29.10.2020	1624	25766	52	2136



The contribution of biomass burning in PM_{2.5} concentration is likely to be less than 5% on 30.10.2021 and further decline during next three days.



▪ Hotspots for Today

City	Station Name	AQI value	Air Quality	Prominent Pollutant
Delhi	Shadipur, Delhi - CPCB	352	Very Poor	PM ₁₀
	NSIT Dwarka, Delhi - CPCB	347	Very Poor	PM _{2.5}
	Dwarka-Sector 8, Delhi - DPCC	319	Very Poor	PM _{2.5}
	Jahangirpuri, Delhi - DPCC	312	Very Poor	PM ₁₀
	Anand Vihar, Delhi - DPCC	310	Very Poor	PM ₁₀
Faridabad	Sector 11, Faridabad - HSPCB	337	Very Poor	PM _{2.5}
	Sector 30, Faridabad - HSPCB	288	Poor	PM _{2.5}
Gurugram	Sector-51, Gurugram - HSPCB	290	Poor	PM _{2.5}
	Teri Gram, Gurugram - HSPCB	288	Poor	PM _{2.5}
Ghaziabad	Loni, Ghaziabad - UPPCB	328	Very Poor	PM _{2.5}
	Vasundhara, Ghaziabad - UPPCB	292	Very Poor	PM _{2.5}
Greater Noida	Knowledge Park - V, Greater Noida - UPPCB	289	Poor	PM _{2.5}
Noida	Sector-116, Noida - UPPCB	263	Poor	PM _{2.5}
	Sector - 125, Noida - UPPCB	263	Poor	PM _{2.5}