



# Central Pollution Control Board

## Air Quality Status for Delhi & NCR

Dated – May 30, 2022



### Current Air Quality Status:

#### Air Quality Index (AQI) (Average of past 24 hours)

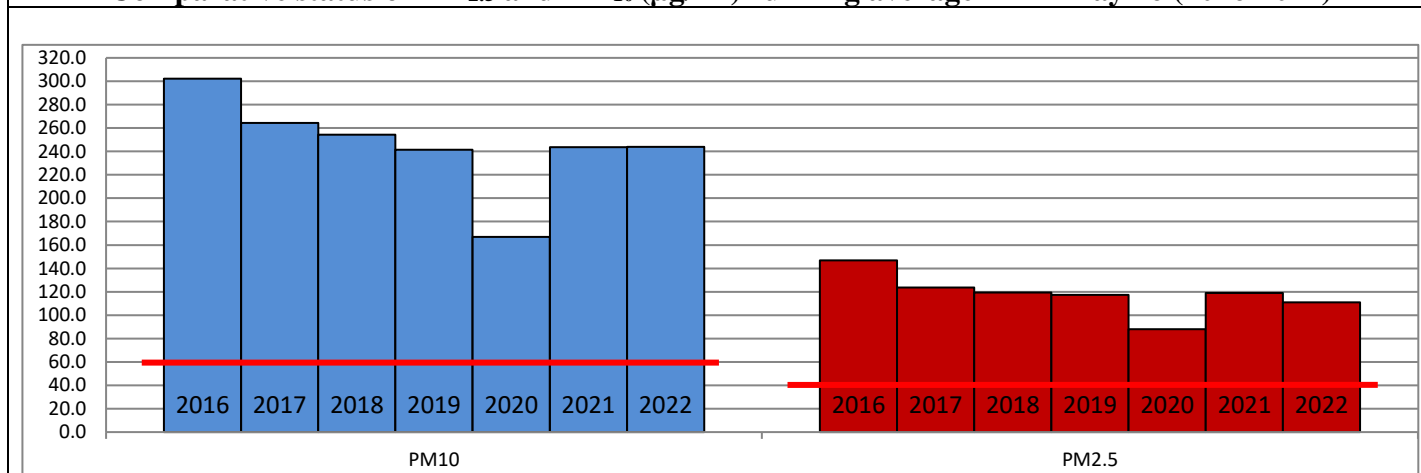
	Air Quality	AQI Value	Prominent Pollutant
Delhi	Poor	201 ↓	PM <sub>2.5</sub> , PM <sub>10</sub> , O <sub>3</sub>
Faridabad	Moderate	200 ↓	PM <sub>2.5</sub> , PM <sub>10</sub>
Ghaziabad	Moderate	197 ↓	PM <sub>10</sub> , O <sub>3</sub>
Greater Noida	Moderate	187 ↓	PM <sub>10</sub>
Gurugram	Moderate	200 ↓	PM <sub>2.5</sub> , PM <sub>10</sub>
Noida	Poor	201 ↓	PM <sub>10</sub>

\*Data available for 37 stations in Delhi today. # ↓, ↑ arrows indicate a decrease/increase as compared to value on the previous day.

#### Comparative status of AQI - Delhi from 01 January to 30 May 2016-2022

Category	Year	2016	2017	2018	2019	2020	2021	2022	2016	2017	2018	2019	2020	2021	2022
	No. of days	147	150	150	150	151	150	150							
Good (0–50)		0	0	0	0	1	0	0							
Satisfactory (51–100)		0	0	1	2	28	6	4	15	35	44	59	97	58	37
Moderate (101–200)		15	35	43	57	68	52	33							
Poor (201–300)		74	79	76	58	37	54	94							
Very Poor (301–400)		52	36	27	26	15	32	18	132	115	106	91	54	92	113
Severe (>401)		6	0	3	7	2	6	1							

#### Comparative status of PM<sub>2.5</sub> and PM<sub>10</sub> (µg/m<sup>3</sup>) running average – Till May 26 (2016-2022)



#### Hotspots for Today:

\*Details given overleaf

Delhi	Lodhi Road, ITO, Chandni Chowk, Narela, Jahangirpuri	Gurugram	Teri Gram
Faridabad	Sector-11	Greater Noida	-
Ghaziabad	Loni, Vasundhara	Noida	Sector-125, Sector-62

#### Forecast by IITM (Delhi):

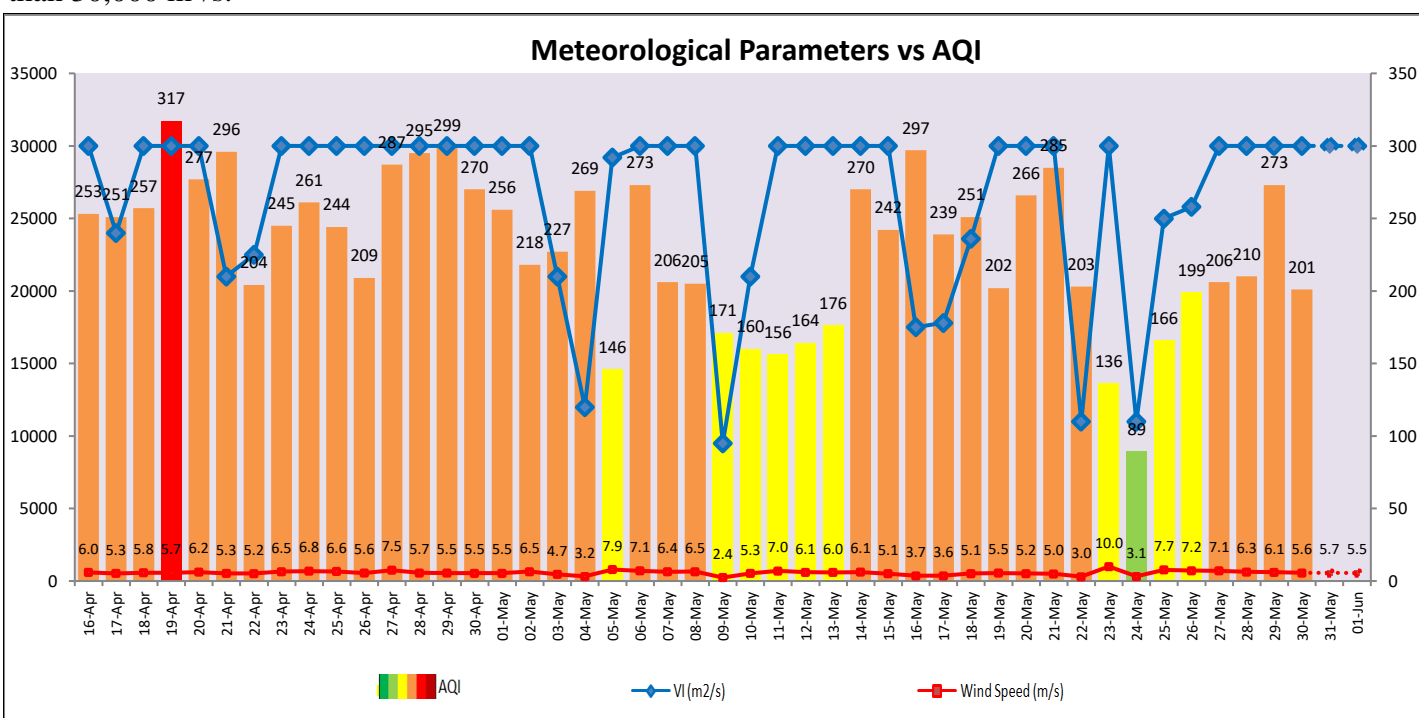
Parameters	May 31, 2022		June 01, 2022- June 02, 2022	
	Concentration	AQI Category	Concentration	AQI Category
PM <sub>10</sub>	271	Poor	316	Poor
PM <sub>2.5</sub>	80	Moderate	93	Poor

## Wind Forecast for Delhi:

	Wind speed (at surface) in km/h		Wind speed (at 900 m) in km/h	Wind Direction	
	As per IMD (at 17:30 hrs.)	As per windy.com (at 16:00 hrs.)	As per windy.com (at 16:00hrs)	As per IMD (at 17:30hrs.)	As per windy.com at 900m
May 31, 2022	12	12	25	W	NW
June 01, 2022	15	09	24	W	NW
June 02, 2022	15	13	29	WNW	W

### IMD Alert for Tomorrow (31.05.2022):

The air quality over Delhi-NCT is likely to remain in Poor category from 31.05.2022 and 01.06.2022. The predominant surface wind is likely to be coming from West/Northwest direction in Delhi with wind speed 12-20 kmph, and partly cloudy sky tomorrow. **Long range transported dust will impact air quality over parts of Rajasthan, Gujarat, MP and NCR from 30th to 31st May, 2022.** Ventilation index is likely to be more than 30,000 m<sup>2</sup>/s.



### Hotspots for Today

City	Station Name	AQI value	Air Quality	Prominent Pollutant
Delhi	Lodhi Road, Delhi - IITM	268	Poor	PM <sub>2.5</sub>
	ITO, Delhi - CPCB	263	Poor	PM <sub>2.5</sub>
	Chandni Chowk, Delhi - IITM	244	Poor	PM <sub>10</sub>
	Narela, Delhi - DPCC	241	Poor	PM <sub>10</sub>
	Jahangirpuri, Delhi - DPCC	237	Poor	PM <sub>10</sub>
Faridabad	Sector 11, Faridabad - HSPCB	209	Poor	PM <sub>2.5</sub>
Gurugram	Teri Gram, Gurugram - HSPCB	229	Poor	PM <sub>10</sub>
Ghaziabad	Loni, Ghaziabad - UPPCB	233	Poor	PM <sub>10</sub>
	Vasundhara, Ghaziabad - UPPCB	211	Poor	PM <sub>10</sub>
Noida	Sector - 125, Noida - UPPCB	221	Poor	PM <sub>10</sub>
	Sector - 62, Noida - IMD	221	Poor	PM <sub>10</sub>