



Central Pollution Control Board

Air Quality Status for Delhi & NCR

Dated – December 29, 2022



Current Air Quality Status:

Air Quality Index (AQI) (Average of past 24 hours)

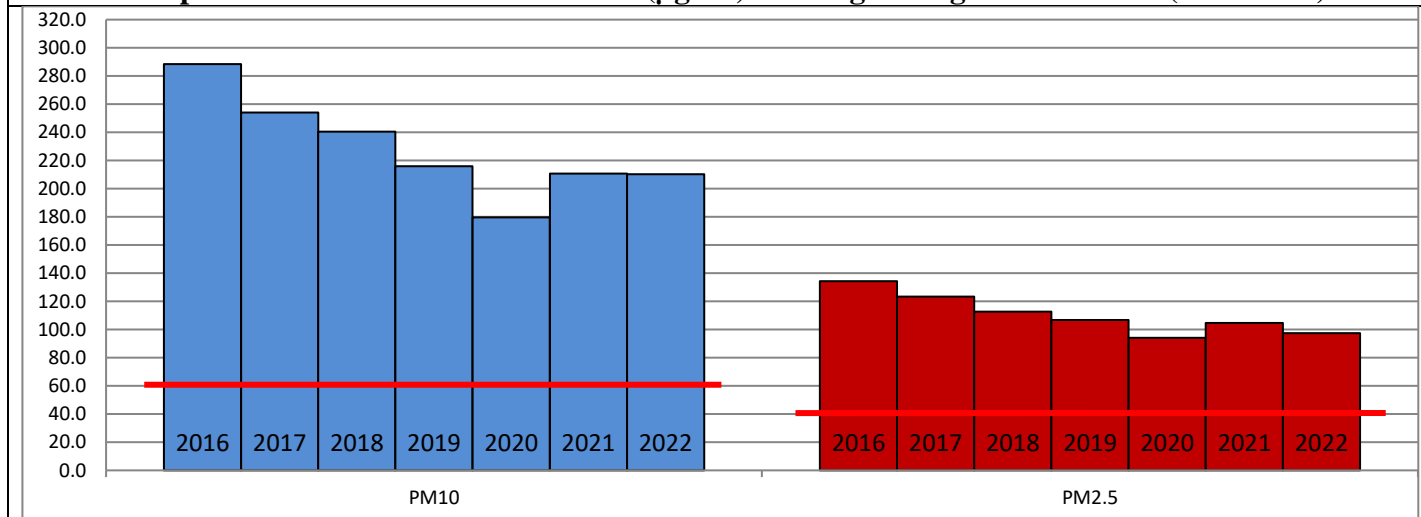
	Air Quality	AQI Value	Prominent Pollutant
Delhi	Very Poor	306 ↓	PM _{2.5}
Faridabad	Very Poor	310 ↑	PM _{2.5}
Ghaziabad	Poor	239 ↓	PM ₁₀ , PM _{2.5}
Greater Noida	Poor	287 ↓	PM _{2.5}
Gurugram	Poor	257 ↓	PM _{2.5}
Noida	Poor	296 ↑	PM _{2.5}

*Data available for 38 stations in Delhi today. # ↓ ↑ arrows indicate a decrease/increase as compared to the value on the previous day.

Comparative status of AQI - Delhi from 01 January to 29 December 2016-2022

Category	Year	2016	2017	2018	2019	2020	2021	2022	2016	2017	2018	2019	2020	2021	2022
	No. of days	352	363	363	363	364	363	363							
Good (0-50)		0	2	0	2	5	1	3							
Satisfactory (51-100)		24	45	53	59	95	81	65	110	152	159	182	227	197	163
Moderate (101-200)		86	105	106	121	127	115	95							
Poor (201-300)		120	115	114	103	74	79	130							
Very Poor (301-400)		97	87	72	55	48	63	64	242	211	204	181	137	166	200
Severe (>401)		25	9	18	23	15	24	6							

Comparative status of PM₁₀ and PM_{2.5} (µg/m³) running average – Till Dec 28 (2016-2022)



Hotspots for Today:

*Details given overleaf

Delhi	NSIT Dwarka, Nehru Nagar, Jahangirpuri, Pusa, Alipur	Ghaziabad	Loni, Sanjay Nagar
Faridabad	Sector-16A	Greater Noida	Knowledge Park -III
Gurugram	Sector-51, Teri Gram	Noida	Sector-62

Forecast by IITM (Delhi):

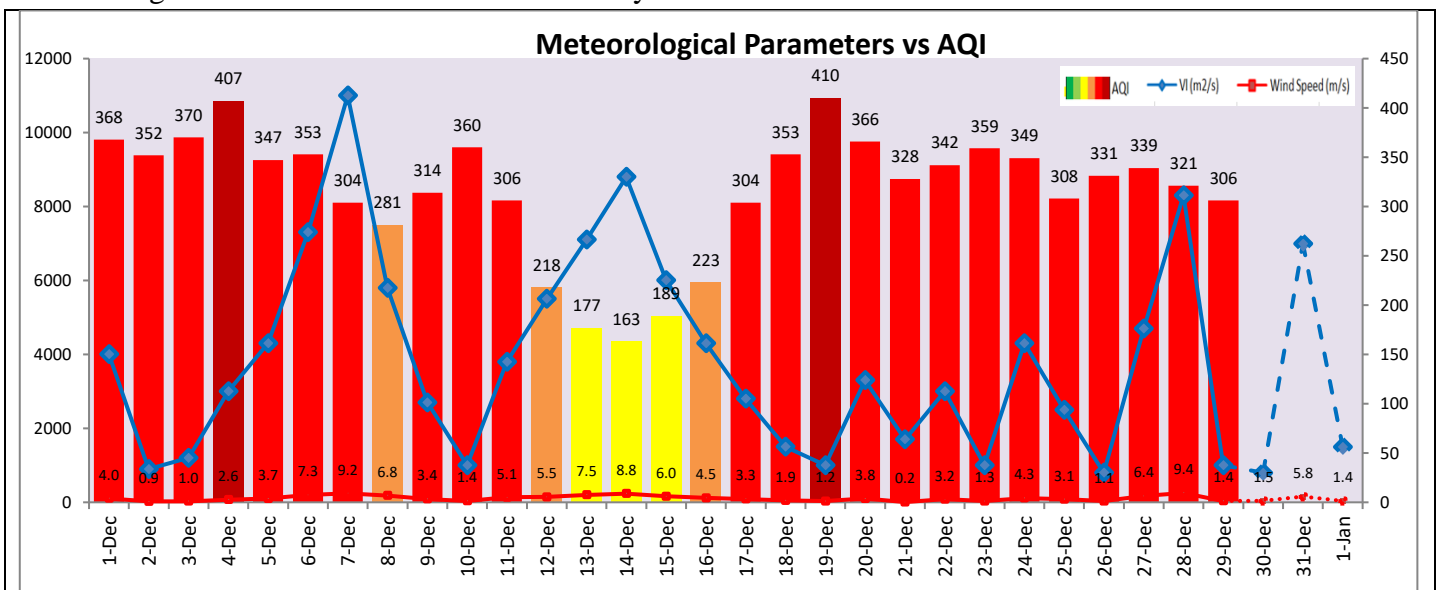
	Dec 30, 2022		Dec 31, 2022- Jan 01, 2023	
	Concentration	AQI Category	Concentration	AQI Category
PM ₁₀	238	Moderate	259	Poor
PM _{2.5}	137	Very Poor	150	Very Poor

Wind Forecast for Delhi:

	Wind speed (at surface) in km/h		Wind speed (at 900 m) in km/h	Wind Direction	
	As per IMD (range)	As per windy.com (at 16:00 hrs.)	As per windy.com (at 16:00hrs)	As per IMD	As per windy.com at 900m
Dec 30, 2022	08-12	08	25	NW	W
Dec 31, 2022	08-16	09	26	NW	NW
Jan 01, 2023	04-08	03	02	NW	NE

IMD Alert for Tomorrow (30.12.2022):

The air quality is likely to deteriorate and reach in Very Poor category on 30.12.2022 and remain in Very Poor category on 31.12.2022 and 01.01.2023. The predominant surface wind is likely to be calm in morning hours and coming from Northwest direction in Delhi with wind speed 08-12 kmph, mainly clear sky and dense fog in the morning tomorrow. Ventilation index is likely to be 800 m²/s.



Hotspots for Today

City	Station Name	AQI value	Air Quality	Prominent Pollutant
Delhi	NSIT Dwarka, Delhi - CPCB	375	Very Poor	PM _{2.5}
	Nehru Nagar, Delhi - DPCC	358	Very Poor	PM _{2.5}
	Jahangirpuri, Delhi - DPCC	353	Very Poor	PM _{2.5}
	Pusa, Delhi - DPCC	351	Very Poor	PM _{2.5}
	Alipur, Delhi - DPCC	344	Very Poor	PM _{2.5}
Faridabad	Sector- 16A, Faridabad - HSPCB	322	Very Poor	PM _{2.5}
Gurugram	Sector-51, Gurugram - HSPCB	276	Poor	PM _{2.5}
	Teri Gram, Gurugram - HSPCB	267	Poor	PM _{2.5}
Ghaziabad	Loni, Ghaziabad - UPPCB	267	Poor	PM _{2.5}
	Sanjay Nagar, Ghaziabad - UPPCB	264	Poor	PM _{2.5}
Greater Noida	Knowledge Park - III, Greater Noida - UPPCB	302	Very Poor	PM _{2.5}
Noida	Sector - 62, Noida - IMD	327	Very Poor	PM _{2.5}