



Central Pollution Control Board

Air Quality Status for Delhi & NCR

Dated – December 29, 2021



Current Air Quality Status:

Air Quality Index (AQI) (Average of past 24 hours)

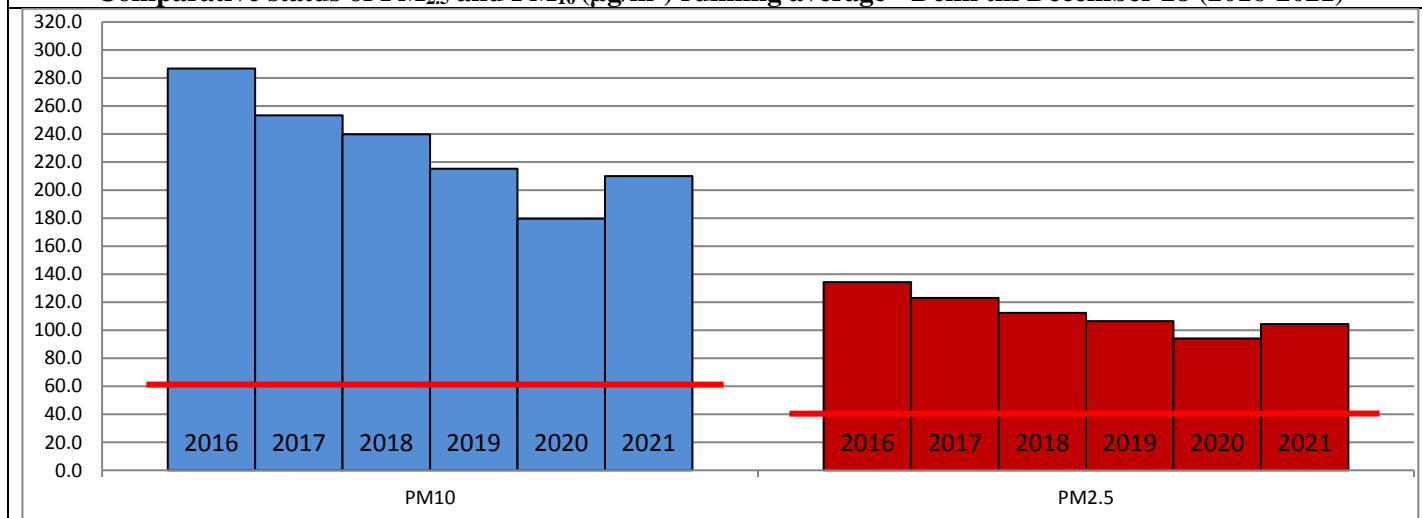
	Air Quality	AQI Value	Prominent Pollutant
Delhi	Poor	267↓	PM _{2.5}
Faridabad	Poor	262↓	PM _{2.5} , PM ₁₀
Ghaziabad	Poor	257↓	PM _{2.5}
Greater Noida	Poor	268↓	PM _{2.5}
Gurugram	Poor	258↓	PM _{2.5}
Noida	Poor	276↑	PM _{2.5}

*Data available for 35 stations in Delhi today. # ↓, ↑ arrows indicate increase/decrease as compared to value on the previous day

Comparative status of AQI - Delhi from 01 January to 29 December 2016-2021

Category	Year	2016	2017	2018	2019	2020	2021	2016	2017	2018	2019	2020	2021
	No. of days	352	363	363	364	365	364						
Good (0–50)		0	2	0	2	5	1						
Satisfactory (51–100)		25	45	53	59	95	72	108	152	159	182	227	197
Moderate (101–200)		83	105	106	121	127	124						
Poor (201–300)		120	115	114	104	75	80						
Very Poor (301–400)		99	87	72	55	48	63	244	211	204	182	138	167
Severe (>401)		25	9	18	23	15	24						

Comparative status of PM_{2.5} and PM₁₀ (µg/m³) running average - Delhi till December 28 (2016-2021)



Hotspots for Today:

*Details given overleaf

Delhi	Nehru Nagar, Jahangirpuri, Anand Vihar, Mundka, Punjabi Bagh	Gurugram	Sector-51, NISE Gwal Pahari
Faridabad	Sector-16A, Sector-30	Greater Noida	Knowledge Park-V
Ghaziabad	Loni, Sanjay Nagar	Noida	Sector-116, Sector-1

Forecast by IITM:

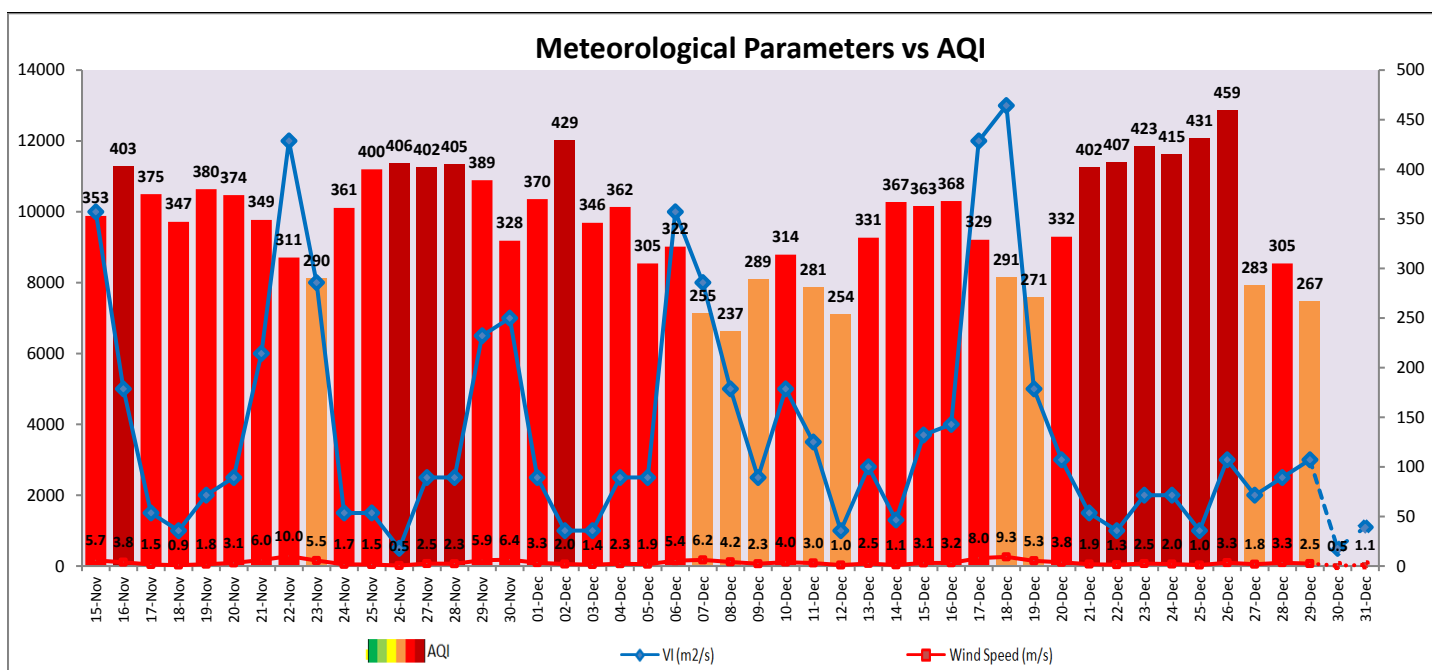
Parameters	December 30, 2021		December 31, 2021– January 1, 2022	
	Concentration	AQI Category	Concentration	AQI Category
PM ₁₀	194	Moderate	238	Moderate
PM _{2.5}	111	Poor	137	Very Poor

▪ **Wind Forecast for Delhi:**

Dates	Wind speed (at surface) in km/h		Wind speed (at 900 m) in km/h	Wind Direction	
	As per IMD (at 17:30 hrs.)	As per windy.com (at 16:00 hrs.)	As per windy.com (at 16:00hrs)	As per IMD (at 17:30hrs.)	As per windy.com at 900m
December 30, 2021	05	09	03	NE	S
December 31, 2021	08	09	08	WNW	NW
January 01, 2022	05	10	13	NW	N

▪ **IMD Alert for Tomorrow (30.12.2021):**

The air quality is likely deteriorate marginally but remain in Poor to lower end of Very Poor category on 30.12.2021 and 31.12.2021. The predominant surface wind is likely to be coming from Southeast direction of Delhi having wind speed 05-10 kmph, partly cloudy sky and moderate fog in the morning. Ventilation index is likely to be 500 m²/s.



▪ **Hotspots for Today**

City	Station Name	AQI value	Air Quality	Prominent Pollutant
Delhi	Nehru Nagar, Delhi - DPCC	377	Very Poor	PM _{2.5}
	Jahangirpuri, Delhi - DPCC	365	Very Poor	PM _{2.5}
	Anand Vihar, Delhi - DPCC	354	Very Poor	PM _{2.5}
	Mundka, Delhi - DPCC	350	Very Poor	PM _{2.5}
	Punjabi Bagh, Delhi - DPCC	347	Very Poor	PM _{2.5}
Faridabad	Sector- 16A, Faridabad - HSPCB	324	Very Poor	PM _{2.5}
	Sector 30, Faridabad - HSPCB	291	Poor	PM _{2.5}
Gurugram	Sector-51, Gurugram - HSPCB	327	Very Poor	PM _{2.5}
	NISE Gwal Pahari, Gurugram - IMD	224	Poor	PM _{2.5}
Ghaziabad	Loni, Ghaziabad - UPPCB	316	Very Poor	PM _{2.5}
	Sanjay Nagar, Ghaziabad - UPPCB	293	Poor	PM _{2.5}
Greater Noida	Knowledge Park - V, Greater Noida - UPPCB	316	Very Poor	PM _{2.5}
Noida	Sector-116, Noida - UPPCB	318	Very Poor	PM _{2.5}
	Sector-1, Noida - UPPCB	303	Very Poor	PM _{2.5}