



Central Pollution Control Board

Air Quality Status for Delhi & NCR

Dated – October 29, 2022



Current Air Quality Status:

Air Quality Index (AQI) (Average of past 24 hours)

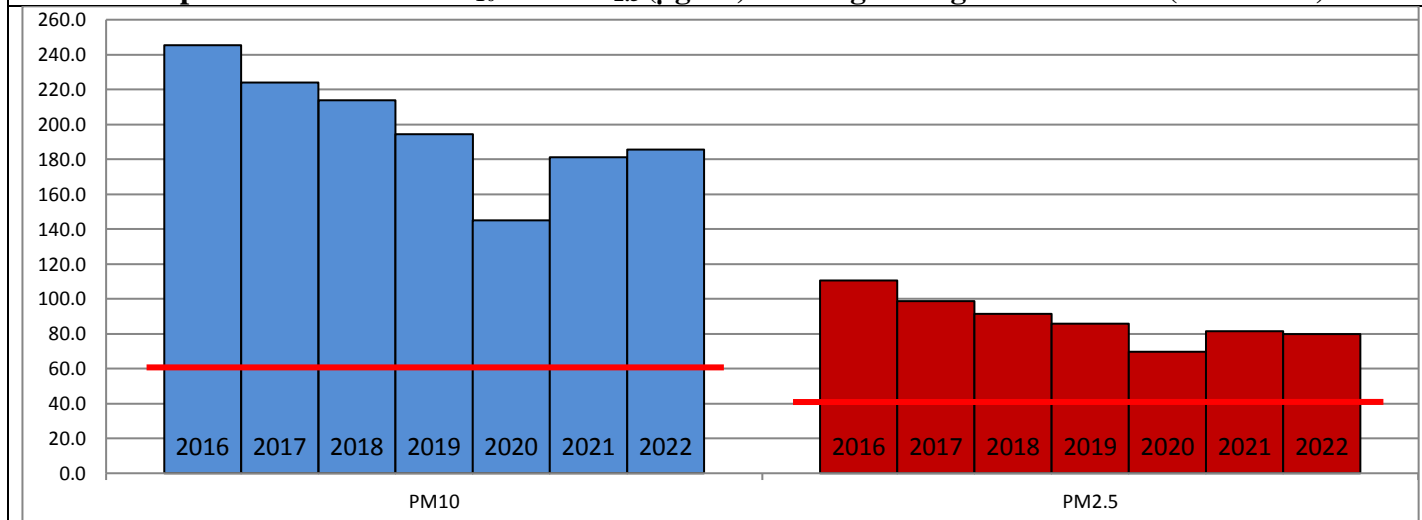
	Air Quality	AQI Value	Prominent Pollutant
Delhi	Very Poor	397 ↑	PM ₁₀ , PM _{2.5}
Faridabad	Very Poor	400 ↑	PM ₁₀ , PM _{2.5}
Ghaziabad	Very Poor	367 ↓	PM ₁₀ , PM _{2.5}
Greater Noida	Very Poor	385 ↑	PM ₁₀ , PM _{2.5}
Gurugram	Very Poor	375 ↑	PM _{2.5}
Noida	Very Poor	381 ↑	PM ₁₀ , PM _{2.5}

*Data available for 36 stations in Delhi today. # ↓ ↑ arrows indicate a decrease/increase as compared to the value on the previous day.

Comparative status of AQI - Delhi from 01 January to 29 October 2016-2022

Category	Year	2016	2017	2018	2019	2020	2021	2022	2016	2017	2018	2019	2020	2021	2022
	No. of days	291	302	302	302	303	302	302							
Good (0-50)		0	2	0	2	5	1	3							
Satisfactory (51-100)		24	45	53	58	95	81	65	110	150	157	175	224	197	160
Moderate (101-200)		86	103	104	115	124	115	92							
Poor (201-300)		116	102	103	88	55	66	115							
Very Poor (301-400)		58	49	36	32	22	33	26	181	152	145	127	79	105	142
Severe (>401)		7	1	6	7	2	6	1							

Comparative status of PM₁₀ and PM_{2.5} (µg/m³) running average – Till Oct 26 (2016-2022)



Hotspots for Today:

*Details given overleaf

Delhi	Anand Vihar, NSIT Dwarka, Wazirpur, Jahangirpuri, Punjabi Bagh	Ghaziabad	Vasundhara, Loni
Faridabad	Sector-16A, New Industrial Town	Greater Noida	Knowledge Park-III
Gurugram	Sector-51, Teri Gram	Noida	Sector-125, Sector - 62

Forecast by IITM (Delhi):

	Oct 30, 2022		Oct 31, 2022- Nov 01, 2022	
	Concentration	AQI Category	Concentration	AQI Category
PM ₁₀	362	Very Poor	305	Poor
PM _{2.5}	195	Very Poor	175	Very Poor

Wind Forecast for Delhi:

	Wind speed (at surface) in km/h		Wind speed (at 900 m) in km/h	Wind Direction	
	As per IMD (range)	As per windy.com (at 16:00 hrs.)	As per windy.com (at 16:00hrs)	As per IMD	As per windy.com at 900m
Oct 30, 2022	Upto 08	04	09	NW/SE	NW
Oct 31, 2022	Upto 08	05	09	NW/SE	W
Nov 01, 2022	Upto 08	04	25	NE	NW

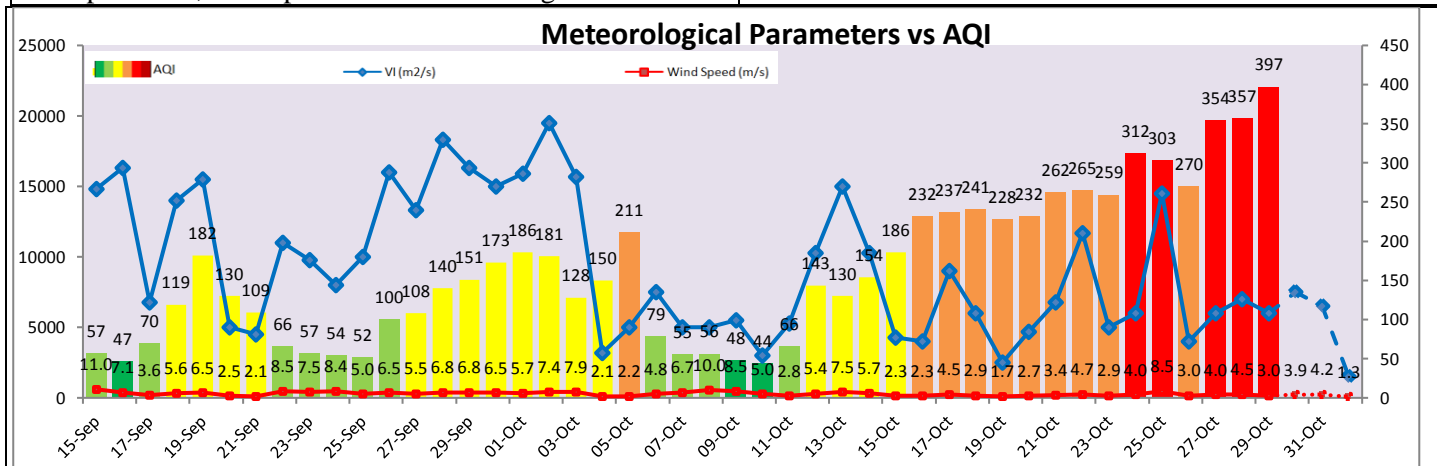
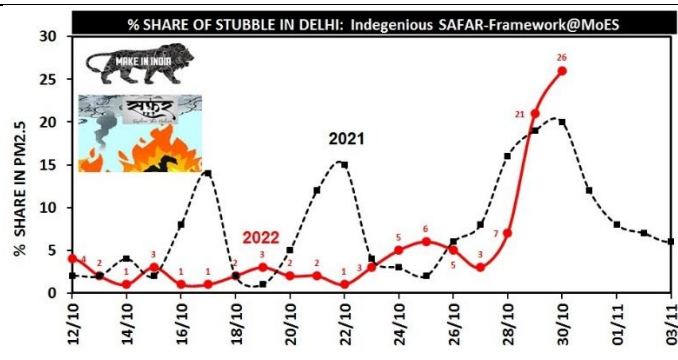
IMD Alert for Tomorrow (30.10.2022):

The air quality is likely to deteriorate and remain in Severe category from 31.10.2022 to 01.11.2022. The predominant surface wind is likely to be coming from Northwest/Southeast direction in Delhi with wind speed CALM to 08 kmph, mainly clear sky and mist in the morning tomorrow. Ventilation index is likely to be 7,500 m²/s.

Active Fire Events (AFEs):

Date	Punjab		Haryana	
	Nos. on the day	Total since September 15	Nos. on the day	Total since September 15
29.10.2022	1898	12112	112	1813
29.10.2021	1353	9001	161	2413

* As per IITM, the impact of stubble burning is ~21%



Hotspots for Today

City	Station Name	AQI value	Air Quality	Prominent Pollutant
Delhi	Anand Vihar, Delhi - DPCC	452	Very Poor	PM ₁₀
	NSIT Dwarka, Delhi - CPCB	437	Very Poor	PM ₁₀
	Wazirpur, Delhi - DPCC	437	Very Poor	PM _{2.5}
	Jahangirpuri, Delhi - DPCC	433	Very Poor	PM _{2.5}
	Punjabi Bagh, Delhi - DPCC	429	Very Poor	PM _{2.5}
Faridabad	New Industrial Town, Faridabad - HSPCB	479	Very Poor	PM ₁₀
	Sector- 16A, Faridabad - HSPCB	421	Very Poor	PM _{2.5}
Gurugram	Teri Gram, Gurugram - HSPCB	405	Very Poor	PM _{2.5}
	Sector-51, Gurugram - HSPCB	397	Poor	PM _{2.5}
Ghaziabad	Vasundhara, Ghaziabad - UPPCB	412	Very Poor	PM ₁₀
	Loni, Ghaziabad - UPPCB	370	Poor	PM _{2.5}
Greater Noida	Knowledge Park - III, Greater Noida - UPPCB	402	Very Poor	PM _{2.5}
Noida	Sector - 125, Noida - UPPCB	402	Very Poor	PM ₁₀
	Sector - 62, Noida - IMD	399	Poor	PM _{2.5}