



Central Pollution Control Board

Air Quality Status for Delhi & NCR

Dated – September 29, 2022



Current Air Quality Status:

Air Quality Index (AQI) (Average of past 24 hours)

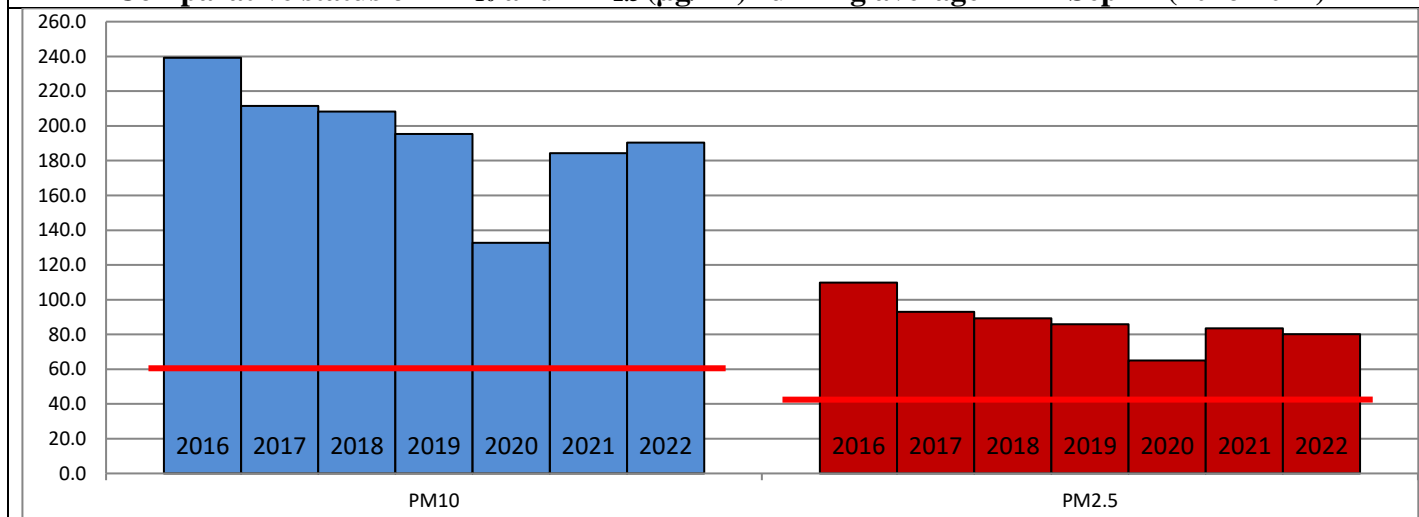
	Air Quality	AQI Value	Prominent Pollutant
Delhi	Moderate	151 ↓	PM ₁₀ , PM _{2.5}
Faridabad	Moderate	167 ↓	PM ₁₀
Ghaziabad	Moderate	166 ↓	PM ₁₀ , PM _{2.5}
Greater Noida	Moderate	183 ↓	PM ₁₀
Gurugram	Moderate	190 ↓	PM ₁₀ , PM _{2.5}
Noida	Moderate	147 ↓	PM _{2.5} , PM ₁₀

*Data available for 31 stations in Delhi today. # ↓ ↑ arrows indicate a decrease/increase as compared to the value on the previous day.

Comparative status of AQI - Delhi from 01 January to 29 September 2016-2022

Category	Year	2016	2017	2018	2019	2020	2021	2022	2016	2017	2018	2019	2020	2021	2022
	No. of days	261	272	272	272	273	272	272							
Good (0–50)		0	2	0	2	5	0	1							
Satisfactory (51–100)		24	45	53	53	95	77	61	105	144	151	164	217	173	145
Moderate (101–200)		81	97	98	109	117	96	83							
Poor (201–300)		96	92	87	74	39	60	105							
Very Poor (301–400)		54	36	28	27	15	33	21	156	128	121	108	56	99	127
Severe (>401)		6	0	6	7	2	6	1							

Comparative status of PM₁₀ and PM_{2.5} (µg/m³) running average – Till Sep 27 (2016-2022)



Hotspots for Today:

*Details given overleaf

Delhi	Anand Vihar, ITO, Mundka, NSIT Dwarka, Dr. Karni Singh Shooting Range	Ghaziabad	Vasundhara, Loni
Faridabad	New Industrial Town	Greater Noida	Knowledge Park-V
Gurugram	Sector-51	Noida	Sector-116, Sector-62

Forecast by IITM (Delhi):

Parameters	Sep 30, 2022		Oct 01, 2022- Oct 02, 2022	
	Concentration	AQI Category	Concentration	AQI Category
PM ₁₀	157	Moderate	186	Moderate
PM _{2.5}	67	Moderate	79	Moderate

Wind Forecast for Delhi:

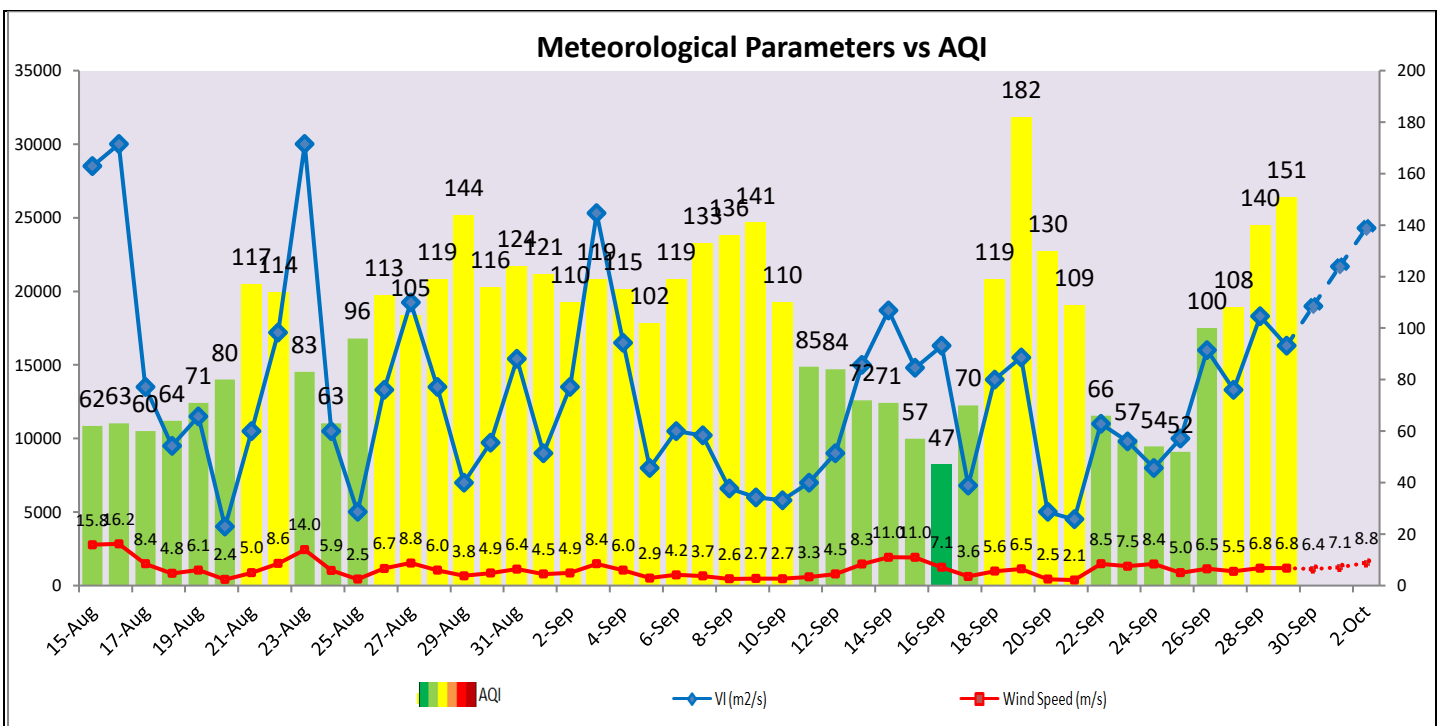
	Wind speed (at surface) in km/h		Wind speed (at 900 m) in km/h	Wind Direction	
	As per IMD (range)	As per windy.com (at 16:00 hrs.)	As per windy.com (at 16:00hrs)	As per IMD	As per windy.com at 900m
Sep 30, 2022	06-12	07	22	N/NW	NW
Oct 01, 2022	06-12	06	23	NE/NW	NW
Oct 02, 2022	06-12	09	34	NW	NW

IMD Alert for Tomorrow (30.09.2022):

The air quality is likely to deteriorate but remain in Moderate category on 30.09.2022 and 01.10.2022. The predominant surface wind is likely to be coming from Northwest/North direction in Delhi with wind speed 06-12 kmph and partly cloudy sky tomorrow. Ventilation index is likely to be 19,000m²/s.

Active Fire Events (AFE):

Date	Punjab		Haryana	
	Nos. on the day	Total since September 15	Nos. on the day	Total since September 15
28.09.2022	0	139	0	1
28.09.2021	28	124	1	1



▪ **Hotspots for Today**

City	Station Name	AQI value	Air Quality	Prominent Pollutant
Delhi	Anand Vihar, Delhi - DPCC	449	Severe	PM ₁₀
	ITO, Delhi - CPCB	193	Moderate	PM _{2.5}
	Mundka, Delhi - DPCC	188	Moderate	PM ₁₀
	NSIT Dwarka, Delhi - CPCB	170	Moderate	PM _{2.5}
	Dr. Karni Singh Shooting Range, Delhi - DPCC	169	Moderate	PM ₁₀
Faridabad	New Industrial Town, Faridabad - HSPCB	178	Moderate	PM ₁₀
Gurugram	Sector-51, Gurugram - HSPCB	314	Moderate	PM _{2.5}
Ghaziabad	Vasundhara, Ghaziabad - UPPCB	206	Poor	PM _{2.5}
	Loni, Ghaziabad - UPPCB	171	Moderate	PM _{2.5}
Greater Noida	Knowledge Park - V, Greater Noida - UPPCB	195	Moderate	PM ₁₀
Noida	Sector - 62, Noida - IMD	153	Moderate	PM _{2.5}
	Sector-116, Noida - UPPCB	152	Moderate	PM ₁₀