



Central Pollution Control Board

Air Quality Status for Delhi & NCR

Dated – April 29, 2022



Current Air Quality Status:

Air Quality Index (AQI) (Average of past 24 hours)

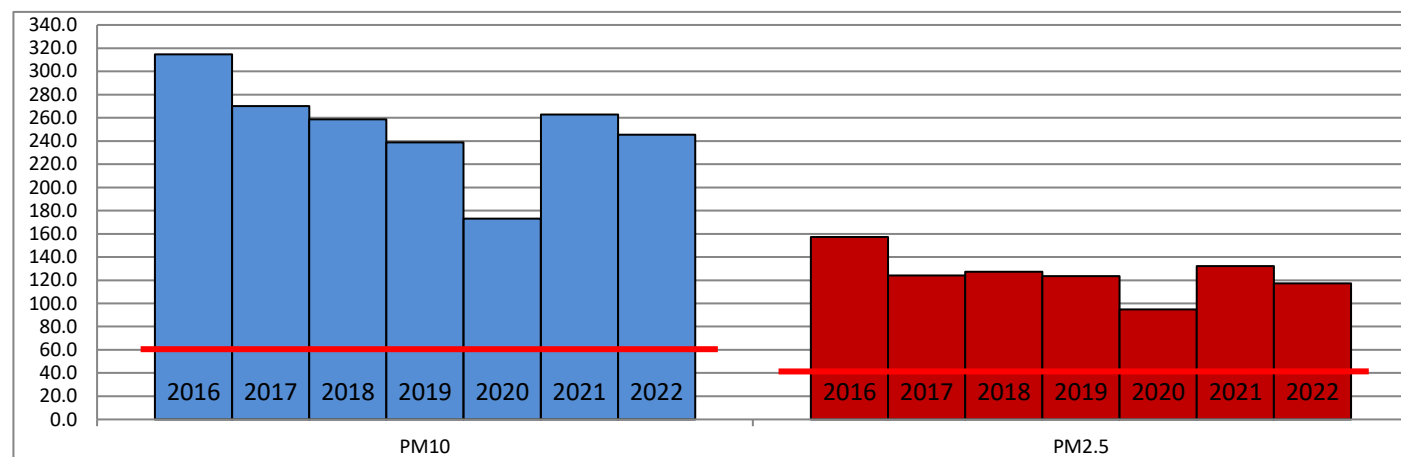
	Air Quality	AQI Value	Prominent Pollutant
Delhi	Poor	299↑	PM ₁₀
Faridabad	Poor	300↑	PM _{2.5} , PM ₁₀
Ghaziabad	Very Poor	362↑	PM ₁₀
Greater Noida	Very Poor	327↑	PM ₁₀
Gurugram	Poor	300↓	PM _{2.5} , PM ₁₀
Noida	Very Poor	337↑	PM ₁₀

*Data available for 33 stations in Delhi today. # ↑ ↓ arrows indicate increase/decrease as compared to value on the previous day

Comparative status of AQI - Delhi from 01 January to 29 April 2016-2022

Category	Year	2016	2017	2018	2019	2020	2021	2022	2016	2017	2018	2019	2020	2021	2022
	No. of days	116	119	119	119	120	119	119							
Good (0-50)		0	0	0	0	1	0	0							
Satisfactory (51-100)		0	0	1	2	25	0	3	8	29	32	44	68	31	27
Moderate (101-200)		8	29	31	42	42	31	24							
Poor (201-300)		56	61	59	46	35	50	73							
Very Poor (301-400)		46	29	25	22	15	32	18	108	90	87	75	52	88	92
Severe (>401)		6	0	3	7	2	6	1							

Comparative status of PM_{2.5} and PM₁₀ (µg/m³) running average – Till April 28 (2016-2022)



Hotspots for Today:

*Details given overleaf

Delhi	Mundka, Bawana, Anand Vihar, Chandni Chowk, Narela	Gurugram	Teri Gram, Vikas Sadan
Faridabad	Sector-11, Sector-30	Greater Noida	Knowledge Park - III
Ghaziabad	Vasundhara, Loni	Noida	Sector-116, Sector-125

Forecast by IITM:

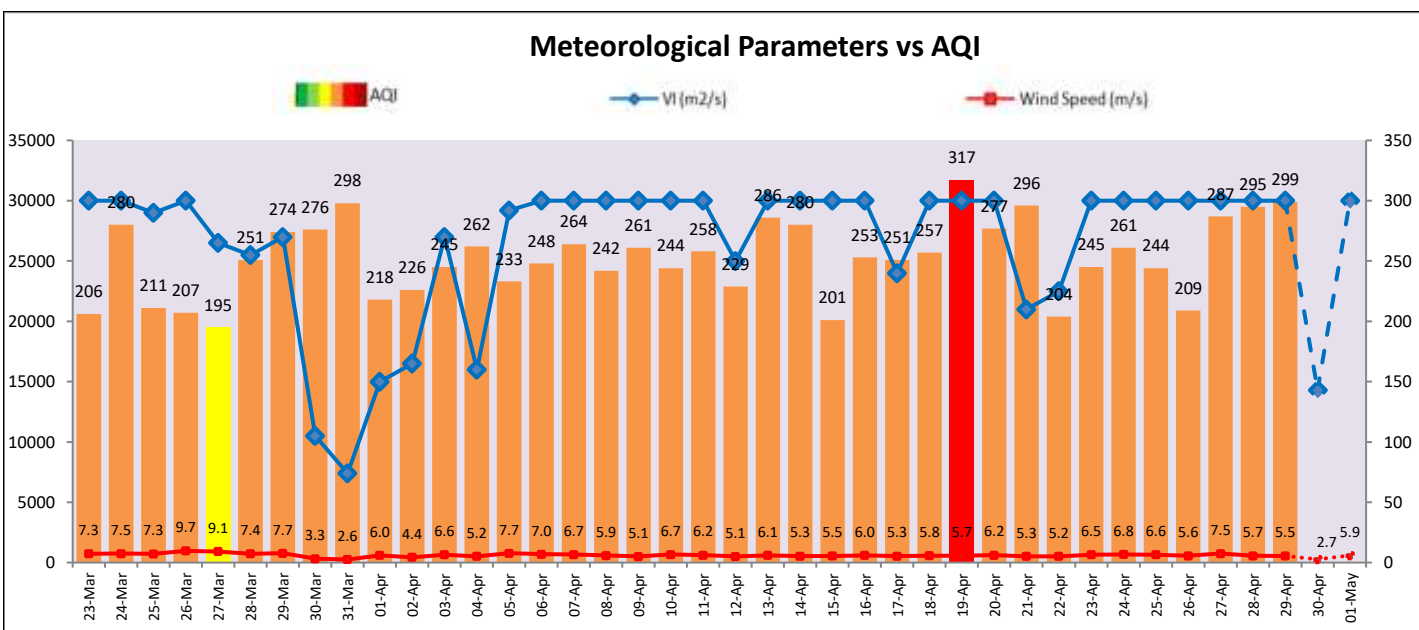
Parameters	April 30, 2022		May 01, 2022- May 02, 2022	
	Concentration	AQI Category	Concentration	AQI Category
PM ₁₀	334	Poor	365	Very Poor
PM _{2.5}	148	Very Poor	161	Very Poor

Wind Forecast for Delhi:

	Wind speed (at surface) in km/h		Wind speed (at 900 m) in km/h	Wind Direction	
	As per IMD (at 17:30 hrs.)	As per windy.com (at 16:00 hrs.)	As per windy.com (at 16:00hrs)	As per IMD (at 17:30hrs.)	As per windy.com at 900m
April 30, 2022	12	10	14	SW	NW
May 01, 2022	14	19	10	NE	NE
May 02, 2022	16	03	06	W	NW

IMD Alert for Tomorrow (30.04.2022):

The air quality is likely to remain in Poor category on 30.04.2022 and 01.05.2022 also. 2. The predominant surface wind is likely to be coming from Northwest/Southwest direction of Delhi with wind speed 12-24 kmph, partly cloudy sky with possibility of thundery development, heat wave conditions at few places tomorrow. Ventilation index is likely to be more than 14,300 m² /s tomorrow.



Hotspots for Today

City	Station Name	AQI value	Air Quality	Prominent Pollutant
Delhi	Mundka, Delhi - DPCC	401	Severe	PM ₁₀
	Anand Vihar, Delhi - DPCC	373	Very Poor	PM ₁₀
	Chandni Chowk, Delhi - IITM	373	Very Poor	PM ₁₀
	Bawana, Delhi - DPCC	365	Very Poor	PM ₁₀
	Narela, Delhi - DPCC	363	Very Poor	PM ₁₀
Faridabad	Sector 11, Faridabad - HSPCB	316	Very Poor	PM _{2.5}
	Sector 30, Faridabad - HSPCB	266	Poor	PM ₁₀
Gurugram	Teri Gram, Gurugram - HSPCB	328	Very Poor	PM _{2.5}
	Vikas Sadan, Gurugram - HSPCB	304	Very Poor	PM _{2.5}
Ghaziabad	Loni, Ghaziabad - UPPCB	444	Severe	PM ₁₀
	Vasundhara, Ghaziabad - UPPCB	376	Very Poor	PM ₁₀
Gr. Noida	Knowledge Park - III, Greater Noida - UPPCB	362	Very Poor	PM ₁₀
Noida	Sector - 125, Noida - UPPCB	363	Very Poor	PM ₁₀
	Sector-116, Noida - UPPCB	338	Very Poor	PM ₁₀