



Central Pollution Control Board

Air Quality Status for Delhi & NCR

Dated – January 29, 2022



Current Air Quality Status:

Air Quality Index (AQI) (Average of past 24 hours)

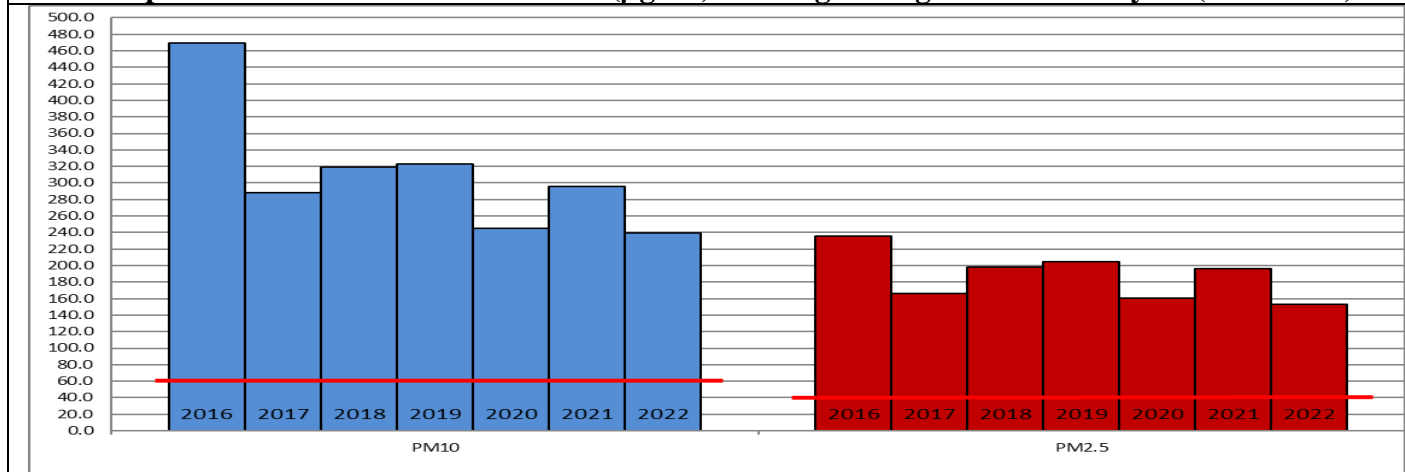
	Air Quality	AQI Value	Prominent Pollutant
Delhi	Poor	251 ↓	PM ₁₀ , PM _{2.5}
Faridabad	Poor	275 ↑	PM ₁₀ , PM _{2.5}
Ghaziabad	Poor	215 ↓	PM ₁₀ , PM _{2.5}
Greater Noida	Poor	202 ↓	PM _{2.5}
Gurugram	Poor	232 ↑	PM _{2.5}
Noida	Poor	215 ↓	PM ₁₀ , PM _{2.5}

*Data available for 35 stations in Delhi today. # ↓ ↑ arrows indicate increase/decrease as compared to value on the previous day

Comparative status of AQI - Delhi from 01 January to 29 January 2016-2022

Category	Year	2016	2017	2018	2019	2020	2021	2022	2016	2017	2018	2019	2020	2021	2022
	No. of days	29	29	29	29	29	29	29							
Good (0–50)		0	0	0	0	0	0	0							
Satisfactory (51–100)		0	0	0	0	0	0	2	0	2	0	2	2	2	5
Moderate (101–200)		0	2	0	2	2	2	3							
Poor (201–300)		2	8	8	9	15	8	11							
Very Poor (301–400)		21	19	18	11	10	13	12	29	27	29	27	27	27	24
Severe (>401)		6	0	3	7	2	6	1							

Comparative status of PM_{2.5} and PM₁₀ (µg/m³) running average – Till January 28 (2016-2022)



Hotspots for Today:

*Details given overleaf

Delhi	Anand Vihar, Jahangirpuri, Nehru Nagar, Wazirpur, Dwarka-Sector 8	Gurugram	Sector-51, Vikas Sadan
Faridabad	Sector-16-A, New Industrial Town	Greater Noida	Knowledge Park – III
Ghaziabad	Vasundhara, Sanjay Nagar	Noida	Sector -62, Sector - 1

Forecast by IITM:

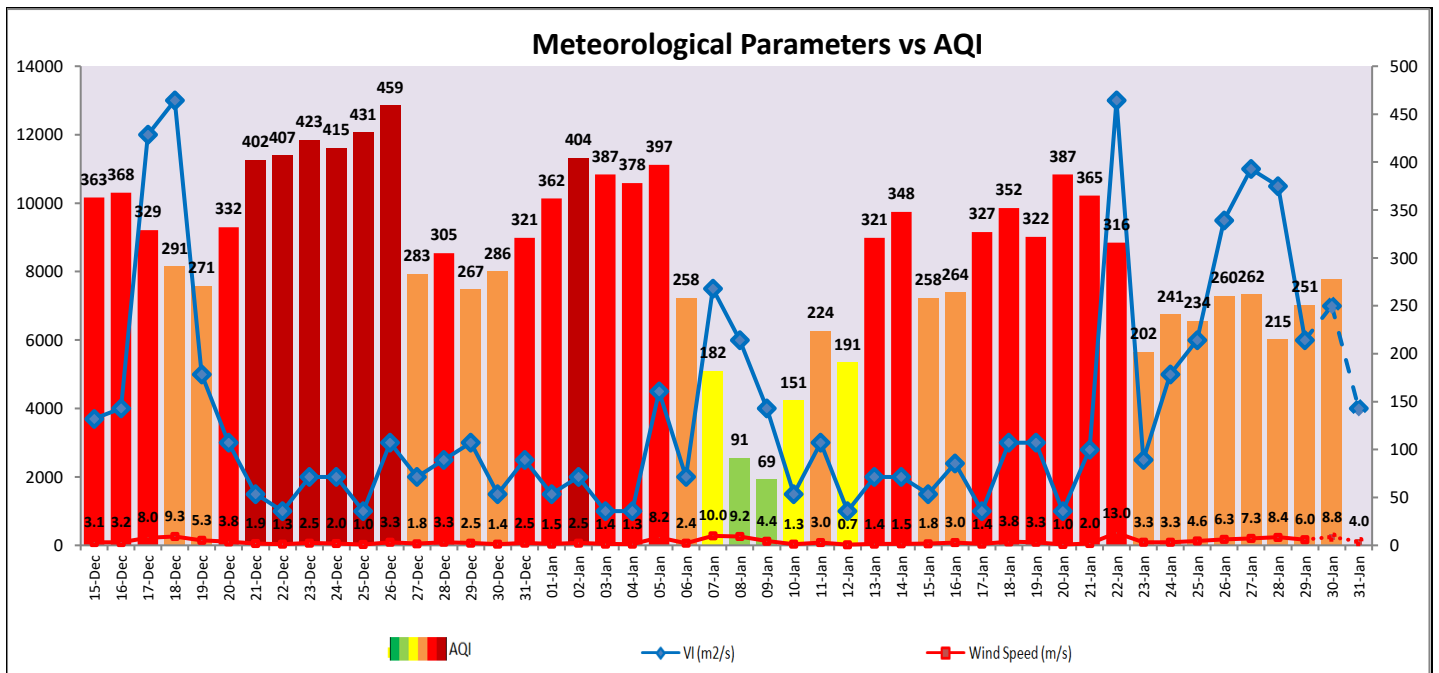
Parameters	January 30, 2022		January 31, 2022-February 01, 2022	
	Concentration	AQI Category	Concentration	AQI Category
PM ₁₀	228	Moderate	269	Poor
PM _{2.5}	121	Very Poor	144	Very Poor

▪ **Wind Forecast for Delhi:**

	Wind speed (at surface) in km/h		Wind speed (at 900 m) in km/h	Wind Direction	
	As per IMD (at 17:30 hrs.)	As per windy.com (at 16:00 hrs.)	As per windy.com (at 16:00hrs)	As per IMD (at 17:30hrs.)	As per windy.com at 900m
January 30, 2022	16	12	39	WNW	NW
January 31, 2022	04	03	10	N	W
February 01, 2022	12	14	40	NW	NW

▪ **IMD Alert for Tomorrow (30.01.2022):**

The air quality over Delhi-NCT is likely to remain in Poor category on 30.01.2022 and 31.01.2022. The predominant surface wind is likely to be coming from Northwest direction of Delhi with wind speed 16 kmph, mainly clear sky, mist in the morning and strong surface winds (speed 20-30 kmph) tomorrow. Ventilation index is likely to be 9,000 m²/s.



▪ **Hotspots for Today**

City	Station Name	AQI value	Air Quality	Prominent Pollutant
Delhi	Anand Vihar, Delhi - DPCC	409	Severe	PM ₁₀
	Nehru Nagar, Delhi - DPCC	319	Very Poor	PM _{2.5}
	Jahangirpuri, Delhi - DPCC	308	Very Poor	PM _{2.5}
	Dwarka-Sector 8, Delhi - DPCC	305	Very Poor	PM _{2.5}
	Wazirpur, Delhi - DPCC	297	Poor	PM ₁₀
Faridabad	New Industrial Town, Faridabad - HSPCB	332	Very Poor	PM ₁₀
	Sector- 16A, Faridabad - HSPCB	251	Poor	CO
Gurugram	Sector-51, Gurugram - HSPCB	276	Poor	PM _{2.5}
	Vikas Sadan, Gurugram - HSPCB	249	Poor	PM _{2.5}
Ghaziabad	Sanjay Nagar, Ghaziabad - UPPCB	263	Poor	PM _{2.5}
	Vasundhara, Ghaziabad - UPPCB	199	Moderate	PM _{2.5}
Greater Noida	Knowledge Park - III, Greater Noida - UPPCB	209	Poor	PM _{2.5}
Noida	Sector - 62, Noida - IMD	262	Poor	PM ₁₀
	Sector-1, Noida - UPPCB	208	Poor	PM _{2.5}