



# Central Pollution Control Board

## Air Quality Status for Delhi & NCR

Dated – December 28, 2022



### Current Air Quality Status:

#### Air Quality Index (AQI) (Average of past 24 hours)

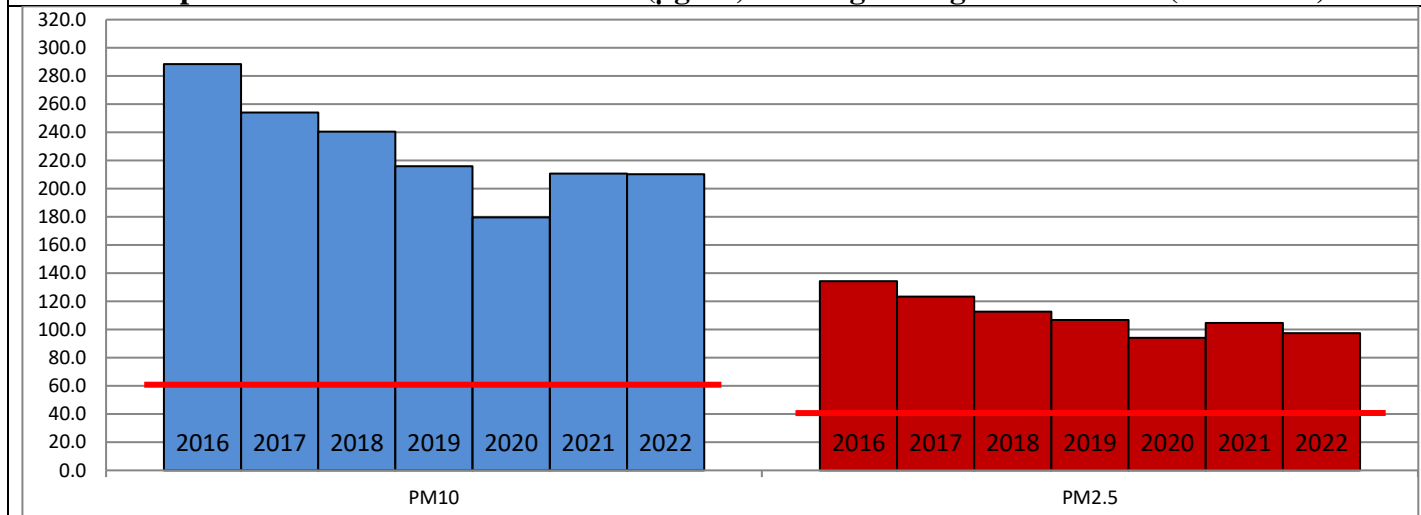
	Air Quality	AQI Value	Prominent Pollutant
Delhi	Very Poor	321 ↓	PM <sub>2.5</sub>
Faridabad	Poor	248 ↓	PM <sub>2.5</sub>
Ghaziabad	Poor	269 ↓	PM <sub>2.5</sub>
Greater Noida	Poor	286 ↓	PM <sub>2.5</sub>
Gurugram	Poor	261 ↑	PM <sub>2.5</sub>
Noida	Poor	264 ↓	PM <sub>2.5</sub>

\*Data available for 39 stations in Delhi today. # ↓ ↑ arrows indicate a decrease/increase as compared to the value on the previous day.

#### Comparative status of AQI - Delhi from 01 January to 28 December 2016-2022

Category	Year	2016	2017	2018	2019	2020	2021	2022	2016	2017	2018	2019	2020	2021	2022
	No. of days	351	362	362	362	363	362	362							
Good (0–50)		0	2	0	2	5	1	3							
Satisfactory (51–100)		24	45	53	59	95	81	65	110	152	159	182	227	197	163
Moderate (101–200)		86	105	106	121	127	115	95							
Poor (201–300)		120	115	114	103	73	78	130							
Very Poor (301–400)		96	85	70	55	48	62	62	241	210	203	180	136	165	199
Severe (>401)		24	9	18	21	15	24	6							

#### Comparative status of PM<sub>10</sub> and PM<sub>2.5</sub> (µg/m<sup>3</sup>) running average – Till Dec 27 (2016-2022)



#### Hotspots for Today:

\*Details given overleaf

Delhi	NSIT Dwarka, Wazirpur, Pusa, Mundka, Nehru Nagar	Ghaziabad	Vasundhara, Loni
Faridabad	Sector-16A, New Industrial Town	Greater Noida	Knowledge Park -III
Gurugram	Sector-51, Teri Gram	Noida	Sector-62, Sector-116

#### Forecast by IITM (Delhi):

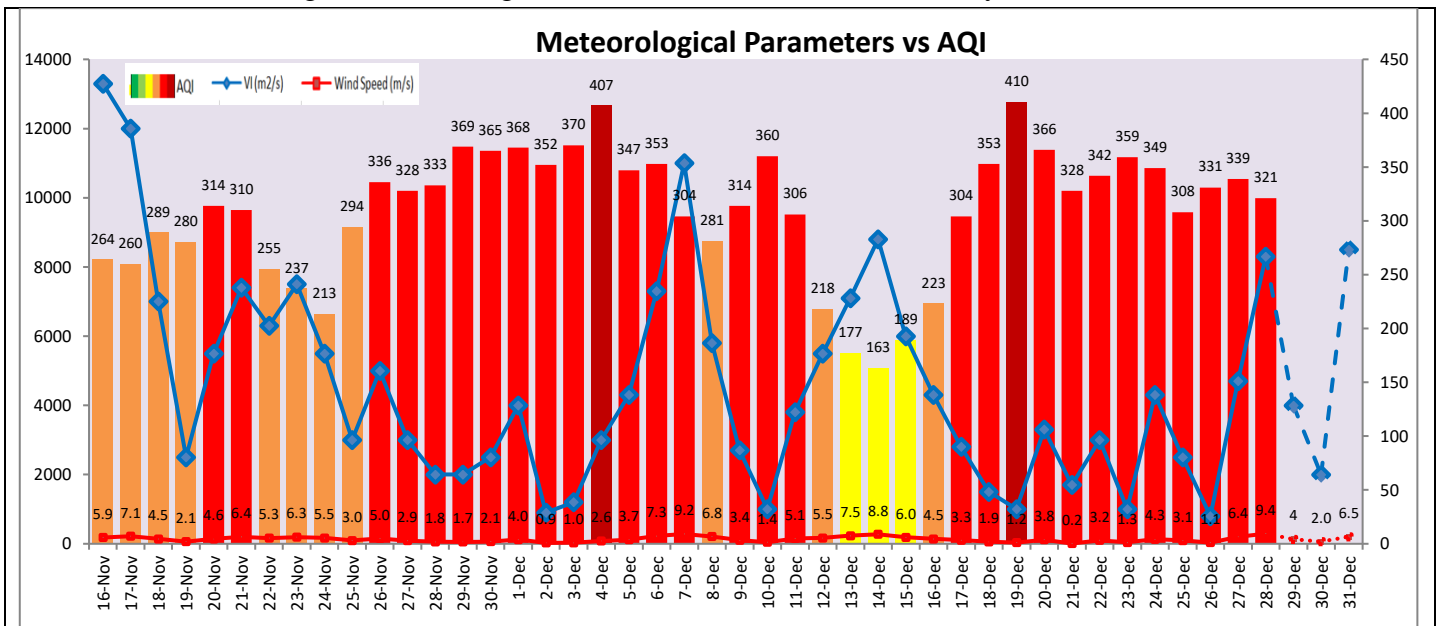
	Dec 29, 2022		Dec 30, 2022- Dec 31, 2022	
	Concentration	AQI Category	Concentration	AQI Category
PM <sub>10</sub>	208	Moderate	230	Moderate
PM <sub>2.5</sub>	122	Very Poor	134	Very Poor

### Wind Forecast for Delhi:

	Wind speed (at surface) in km/h		Wind speed (at 900 m) in km/h	Wind Direction	
	As per IMD (range)	As per windy.com (at 16:00 hrs.)	As per windy.com (at 16:00hrs)	As per IMD	As per windy.com at 900m
Dec 29, 2022	04-12	08	08	Variable	W
Dec 30, 2022	08	07	25	NW	W
Dec 31, 2022	08-12	08	25	NW/W	NW

### IMD Alert for Tomorrow (29.12.2022):

The air quality is likely to improve but remain in Poor category on 29.12.2022. The predominant surface wind is likely to be coming from variable direction in Delhi with wind speed 04- 12 kmph, partly cloudy sky and shallow to moderate fog in the morning tomorrow. Ventilation index is likely to be 4,000 m<sup>2</sup>/s.



### Hotspots for Today

City	Station Name	AQI value	Air Quality	Prominent Pollutant
Delhi	NSIT Dwarka, Delhi - CPCB	384	Very Poor	PM <sub>2.5</sub>
	Wazirpur, Delhi - DPCC	376	Very Poor	PM <sub>2.5</sub>
	Pusa, Delhi - DPCC	371	Very Poor	PM <sub>2.5</sub>
	Mundka, Delhi - DPCC	366	Very Poor	PM <sub>2.5</sub>
	Nehru Nagar, Delhi - DPCC	361	Very Poor	PM <sub>2.5</sub>
Faridabad	Sector- 16A, Faridabad - HSPCB	304	Very Poor	PM <sub>2.5</sub>
	New Industrial Town, Faridabad - HSPCB	250	Poor	PM <sub>10</sub>
Gurugram	Teri Gram, Gurugram - HSPCB	272	Poor	PM <sub>2.5</sub>
	Sector-51, Gurugram - HSPCB	268	Poor	PM <sub>2.5</sub>
Ghaziabad	Vasundhara, Ghaziabad - UPPCB	328	Very Poor	PM <sub>2.5</sub>
	Loni, Ghaziabad - UPPCB	283	Poor	PM <sub>2.5</sub>
Greater Noida	Knowledge Park - III, Greater Noida - UPPCB	304	Very Poor	PM <sub>2.5</sub>
Noida	Sector - 62, Noida - IMD	336	Very Poor	PM <sub>2.5</sub>
	Sector-116, Noida - UPPCB	305	Very Poor	PM <sub>2.5</sub>