



Central Pollution Control Board

Air Quality Status for Delhi & NCR

Dated – December 28, 2021

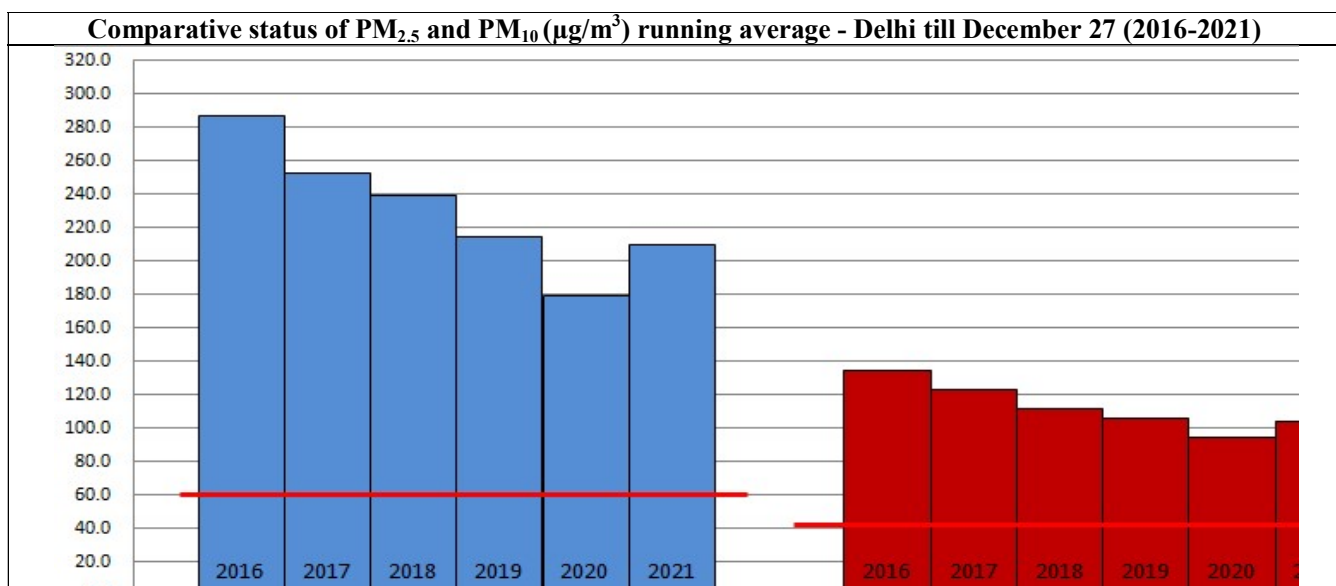


Current Air Quality Status:

Air Quality Index (AQI) (Average of past 24 hours)			
	Air Quality	AQI Value	Prominent Pollutant
Delhi	Very Poor	305 ↓	PM _{2.5}
Faridabad	Poor	300 ↑	PM _{2.5}
Ghaziabad	Poor	286 ↑	PM _{2.5}
Greater Noida	Poor	288 ↑	PM _{2.5}
Gurugram	Poor	283 ↓	PM _{2.5}
Noida	Poor	274 ↑	PM _{2.5}

*Data available for 36 stations in Delhi today. # ↑ ↓ arrows indicate increase/decrease as compared to value on the previous day

Comparative status of AQI - Delhi from 01 January to 28 December 2016-2021													
Category	Year	2016	2017	2018	2019	2020	2021	2016	2017	2018	2019	2020	2021
	No. of days	351	362	362	363	364	363						
Good (0-50)		0	2	0	2	5	1						
Satisfactory (51-100)		25	45	53	59	95	72	108	152	159	182	227	197
Moderate (101-200)		83	105	106	121	127	124						
Poor (201-300)		120	115	114	104	74	79						
Very Poor (301-400)		99	86	71	55	48	63	243	210	203	181	137	166
Severe (>401)		24	9	18	22	15	24						



Hotspots for Today: *Details given overleaf			
Delhi	Jahangirpuri, Rohini, Nehru Nagar, Anand Vihar, R.K. Puram	Gurugram	Vikas Sadan, Sector-51
		Greater Noida	Knowledge Park - V
Ghaziabad	Sanjay Nagar, Loni	Noida	Sector – 116, Sector – 1

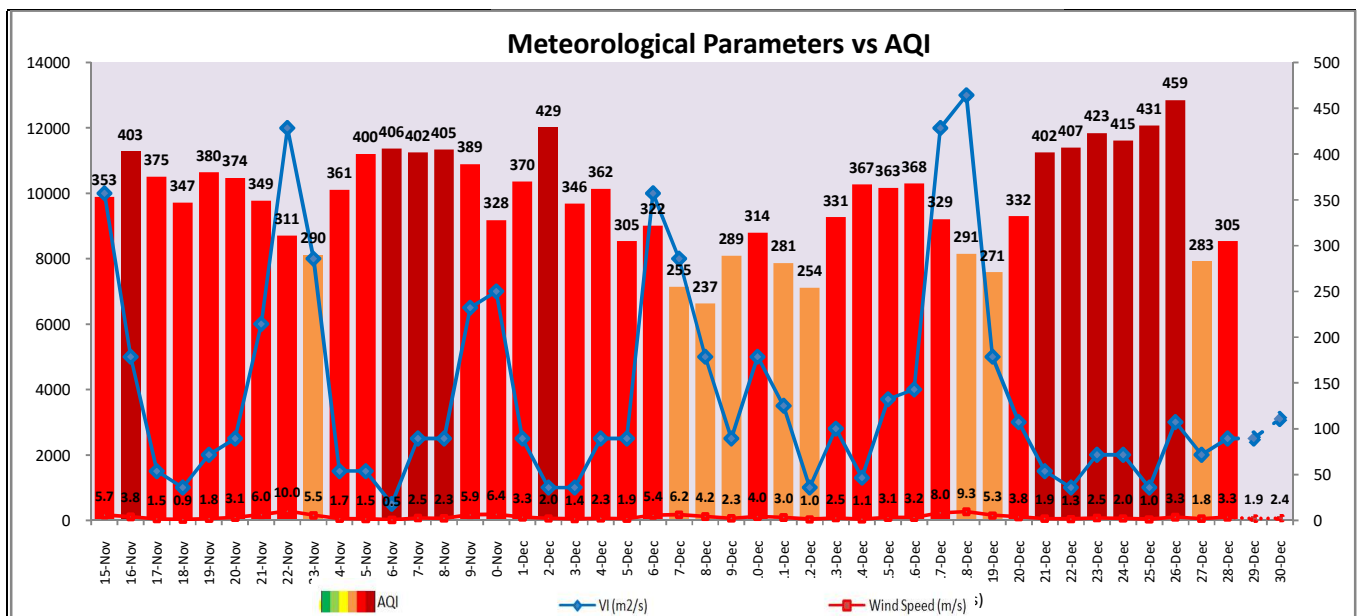
Forecast by IITM:				
Parameters	December 29, 2021		December 30, 2021– December 31, 2021	
	Concentration	AQI Category	Concentration	AQI Category
PM ₁₀	174	Moderate	199	Moderate
PM _{2.5}	98	Poor	112	Poor

▪ **Wind Forecast for Delhi:**

Dates	Wind speed (at surface) in km/h		Wind speed (at 900 m) in km/h	Wind Direction	
	As per IMD (at17:30 hrs.)	As per windy.com (at 16:00 hrs.)	As per windy.com (at 16:00hrs)	As per IMD (at17:30hrs.)	As per windy.com at 900m
December 29, 2021	08	08	19	E	NW
December 30, 2021	04	08	10	SE	NE
December 31, 2021	08	08	04	NW	NW

▪ **IMD Alert for Tomorrow (29.12.2021):**

The air quality over Delhi-NCT is likely to remain in Poor to Moderate category on 29.12.2021 and Poor category on 30.12.2021. The predominant surface wind is likely to remain calm during morning hours, likely to be coming from Northeast/East direction of Delhi having wind speed upto 08 kmph with partly cloudy sky and shallow fog in the morning. Ventilation index is likely to be 2,500 m²/s.



▪ **Hotspots for Today**

City	Station Name	AQI value	Air Quality	Prominent Pollutant
Delhi	Nehru Nagar, Delhi - DPCC	373	Very Poor	PM _{2.5}
	Jahangirpuri, Delhi - DPCC	370	Very Poor	PM _{2.5}
	Rohini, Delhi - DPCC	364	Very Poor	PM _{2.5}
	Anand Vihar, Delhi - DPCC	359	Very Poor	PM _{2.5}
	R K Puram, Delhi - DPCC	358	Very Poor	PM _{2.5}
Gurugram	Sector-51, Gurugram - HSPCB	327	Very Poor	PM _{2.5}
	Vikas Sadan, Gurugram - HSPCB	287	Poor	PM _{2.5}
Ghaziabad	Loni, Ghaziabad - UPPCB	349	Very Poor	PM _{2.5}
	Sanjay Nagar, Ghaziabad - UPPCB	286	Poor	PM _{2.5}
Greater Noida	Knowledge Park - V, Greater Noida - UPPCB	290	Poor	PM _{2.5}
Noida	Sector-1, Noida - UPPCB	280	Poor	PM _{2.5}
	Sector-116, Noida - UPPCB	274	Poor	PM _{2.5}