



Central Pollution Control Board

Air Quality Status for Delhi & NCR

Dated – November 28, 2022



Current Air Quality Status:

Air Quality Index (AQI) (Average of past 24 hours)

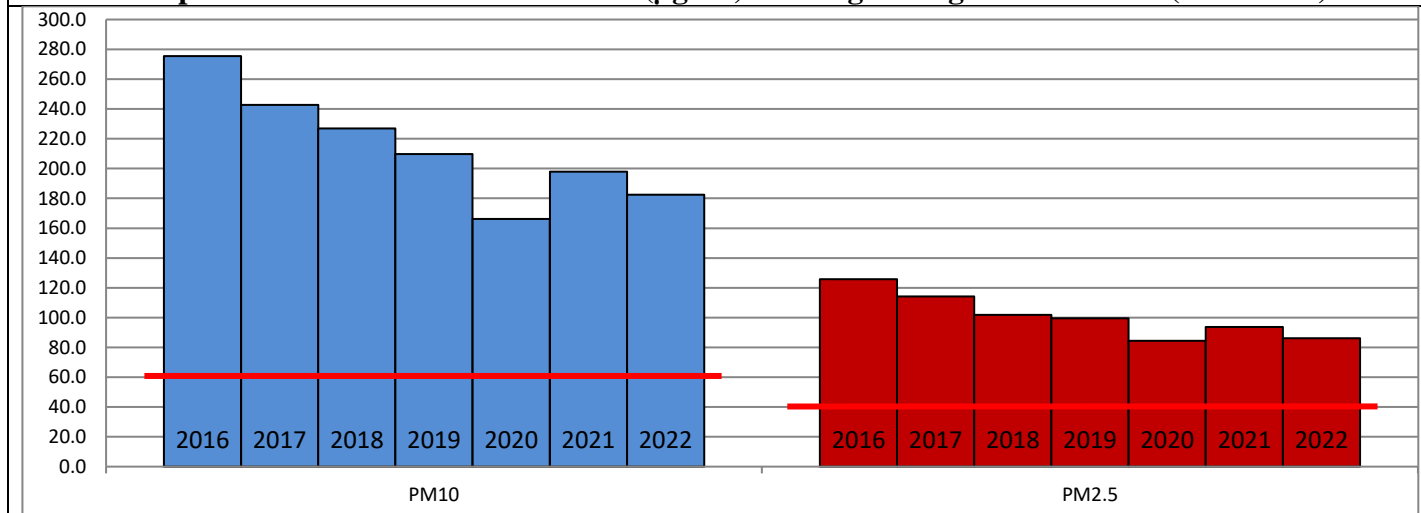
	Air Quality	AQI Value	Prominent Pollutant
Delhi	Very Poor	333 ↑	PM ₁₀ , PM _{2.5}
Faridabad	Very Poor	314 ↑	PM _{2.5}
Ghaziabad	Very Poor	305 ↑	PM ₁₀
Greater Noida	Very Poor	382 ↑	PM ₁₀ , PM _{2.5}
Gurugram	Poor	283 ↓	PM _{2.5}
Noida	Very Poor	330 ↑	PM _{2.5}

*Data available for 35 stations in Delhi today. # ↓ ↑ arrows indicate a decrease/increase as compared to the value on the previous day.

Comparative status of AQI - Delhi from 01 January to 28 November 2016-2022

Category	Year	2016	2017	2018	2019	2020	2021	2022	2016	2017	2018	2019	2020	2021	2022
	No. of days	321	332	332	332	333	332	332							
Good (0–50)		0	2	0	2	5	1	3							
Satisfactory (51–100)		24	45	53	58	95	81	65	110	150	158	177	226	197	160
Moderate (101–200)		86	103	105	117	126	115	92							
Poor (201–300)		119	105	110	96	64	70	127							
Very Poor (301–400)		74	69	52	43	32	48	41	211	182	174	155	107	135	172
Severe (>401)		18	8	12	16	11	17	4							

Comparative status of PM₁₀ and PM_{2.5} (µg/m³) running average – Till Nov 24 (2016-2022)



Hotspots for Today:

*Details given overleaf

Delhi	Nehru Nagar, Jahangirpuri, NSIT Dwarka, Anand Vihar, Dwarka Sector-8	Ghaziabad	Vasundhara
Faridabad	Sector- 11, Sector-16A	Greater Noida	Knowledge Park-V
Gurugram	Sector-51, Vikas Sadan	Noida	Sector – 62, Sector-116

Forecast by IITM (Delhi):

	Nov 29, 2022		Nov 30, 2022- Dec 01, 2022	
	Concentration	AQI Category	Concentration	AQI Category
PM ₁₀	289	Poor	315	Poor
PM _{2.5}	159	Very Poor	173	Very Poor

Wind Forecast for Delhi:

	Wind speed (at surface) in km/h		Wind speed (at 900 m) in km/h	Wind Direction	
	As per IMD (range)	As per windy.com (at 16:00 hrs.)	As per windy.com (at 16:00hrs)	As per IMD	As per windy.com at 900m
Nov 29, 2022	Upto 04	07	11	NW	NW
Nov 30, 2022	04-08	10	14	NW	NW
Dec 01, 2022	08 - calm	10	19	W	NW

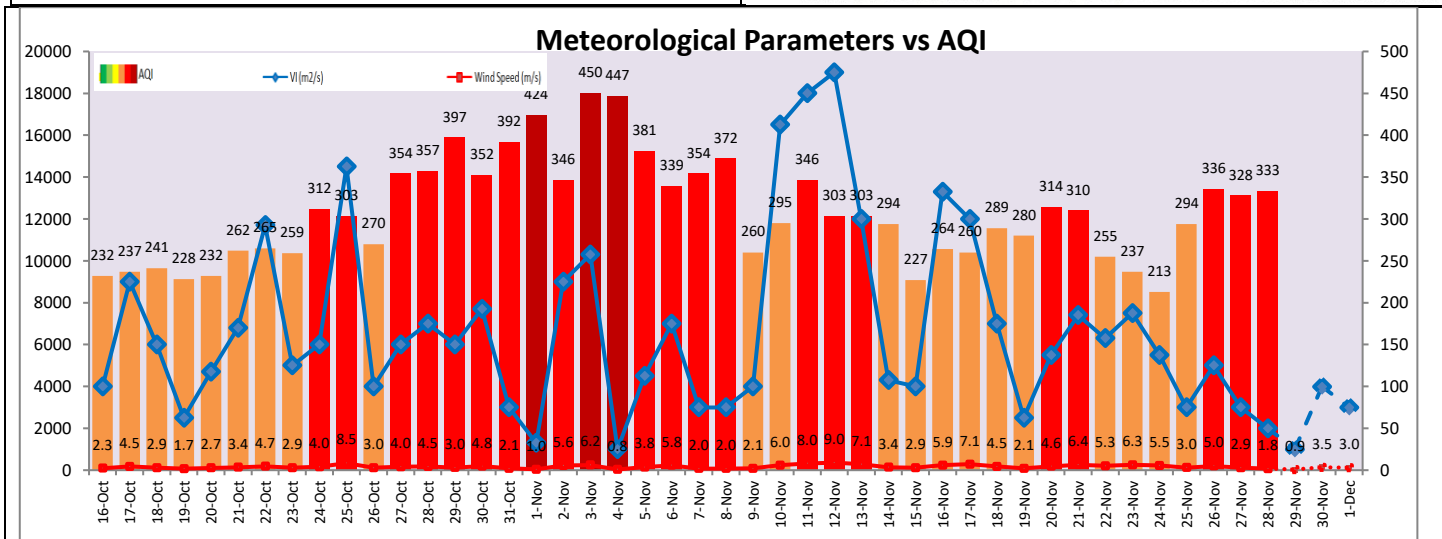
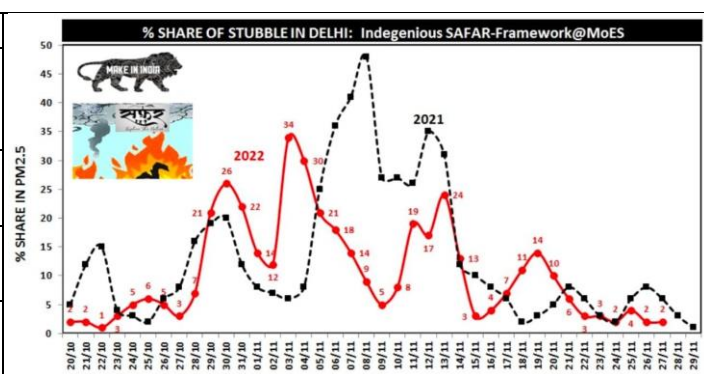
IMD Alert for Tomorrow (29.11.2022):

The air quality is likely to remain in Very Poor category on 29.11.2022. The predominant surface wind is likely to be coming from Northwest direction in Delhi with wind speed upto 04 kmph during daytime, partly cloudy sky and mist in the morning tomorrow. Ventilation index is likely to be 1,000 m²/s.

Active Fire Events (AFE):

Date	Punjab		Haryana	
	Nos. on the day	Total since September 15	Nos. on the day	Total since September 15
27.11.2022	12	49888	8	3629
27.11.2021	19	71286	28	6946

* As per IITM, the contribution of stubble burning to PM_{2.5} in Delhi is ~02%.



Hotspots for Today

City	Station Name	AQI value	Air Quality	Prominent Pollutant
Delhi	Nehru Nagar, Delhi - DPCC	402	Severe	PM _{2.5}
	Anand Vihar, Delhi - DPCC	401	Severe	PM ₁₀
	Dwarka-Sector 8, Delhi - DPCC	383	Very Poor	PM _{2.5}
	Jahangirpuri, Delhi - DPCC	380	Very Poor	PM _{2.5}
	NSIT Dwarka, Delhi - CPCB	371	Very Poor	PM ₁₀
Faridabad	Sector 11, Faridabad - HSPCB	366	Very Poor	PM _{2.5}
	Sector- 16A, Faridabad - HSPCB	337	Very Poor	PM _{2.5}
Gurugram	Vikas Sadan, Gurugram - HSPCB	324	Very Poor	PM _{2.5}
	Sector-51, Gurugram - HSPCB	290	Poor	PM _{2.5}
Ghaziabad	Vasundhara, Ghaziabad - UPPCB	376	Very Poor	PM ₁₀
Greater Noida	Knowledge Park - V, Greater Noida - UPPCB	407	Severe	PM ₁₀
Noida	Sector - 62, Noida - IMD	377	Very Poor	PM _{2.5}
	Sector-116, Noida - UPPCB	352	Very Poor	PM _{2.5}