



Central Pollution Control Board

Air Quality Status for Delhi & NCR

Dated – November 28, 2021



Current Air Quality Status:

Air Quality Index (AQI) (Average of past 24 hours)

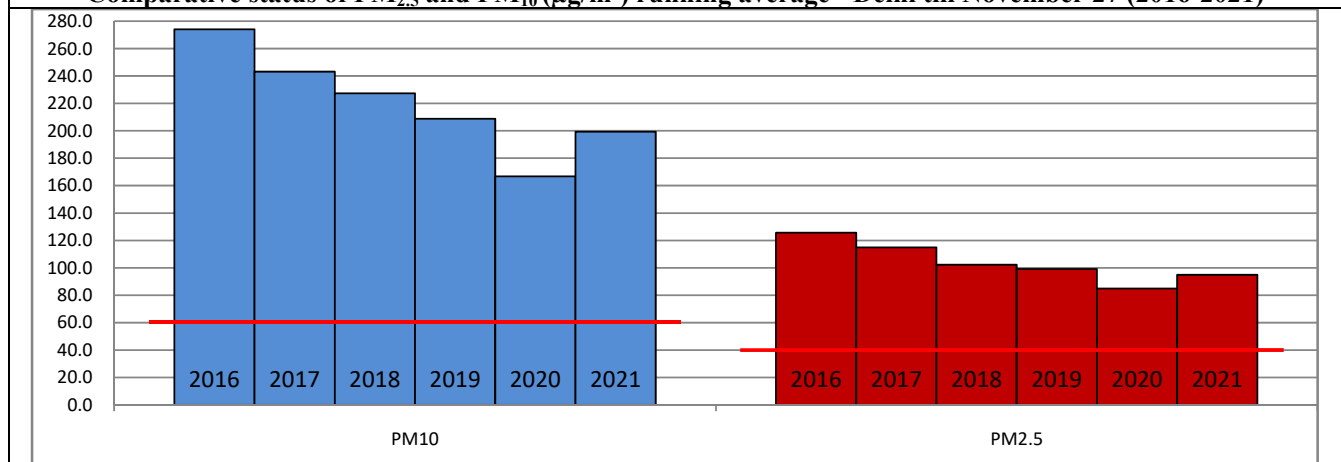
	Air Quality	AQI Value	Prominent Pollutant
Delhi	Severe	405 ↑	PM ₁₀ , PM _{2.5}
Faridabad	Severe	412 ↓	PM ₁₀ , PM _{2.5}
Ghaziabad	Very Poor	353 ↓	PM _{2.5}
Greater Noida	Very Poor	346 ↓	PM ₁₀ , PM _{2.5}
Gurugram	Very Poor	372 ↑	PM _{2.5}
Noida	Very Poor	362 ↓	PM _{2.5}

*Data available for 33 stations in Delhi today. # ↓, ↑ arrows indicate increase/decrease as compared to value on the previous day

Comparative status of AQI - Delhi from 01 January to 28 November 2016-2021

Category	Year No. of days	2016	2017	2018	2019	2020	2021	2016	2017	2018	2019	2020	2021
		321	332	332	333	334	333						
Good (0-50)		0	2	0	2	5	1						
Satisfactory (51-100)		25	45	53	58	95	72	108	150	158	177	226	197
Moderate (101-200)		83	103	105	117	126	124						
Poor (201-300)		119	105	110	97	65	71						
Very Poor (301-400)		76	69	52	43	32	48	213	182	174	156	108	136
Severe (>401)		18	8	12	16	11	17						

Comparative status of PM_{2.5} and PM₁₀ (µg/m³) running average - Delhi till November 27 (2016-2021)



* The PM values are 24 hourly averages (6 am to 6 am)

Hotspots for Today:

*Details given overleaf

Delhi	Jahangirpuri, Rohini, Wazirpur, Mundka, Chandni Chowk	Gurugram	Teri Gram, Sector-51
Faridabad	Sector-11, New Industrial Town	Greater Noida	Knowledge Park – III
Ghaziabad	Loni, Vasundhara	Noida	Sector -1, Sector - 116

Forecast by IITM:

Parameters	November 29, 2021		November 30, 2021– December 01, 2021	
	Concentration	AQI Category	Concentration	AQI Category
PM ₁₀	388	Very Poor	415	Very Poor
PM _{2.5}	232	Very Poor	248	Very Poor

▪ **Wind Forecast for Delhi:**

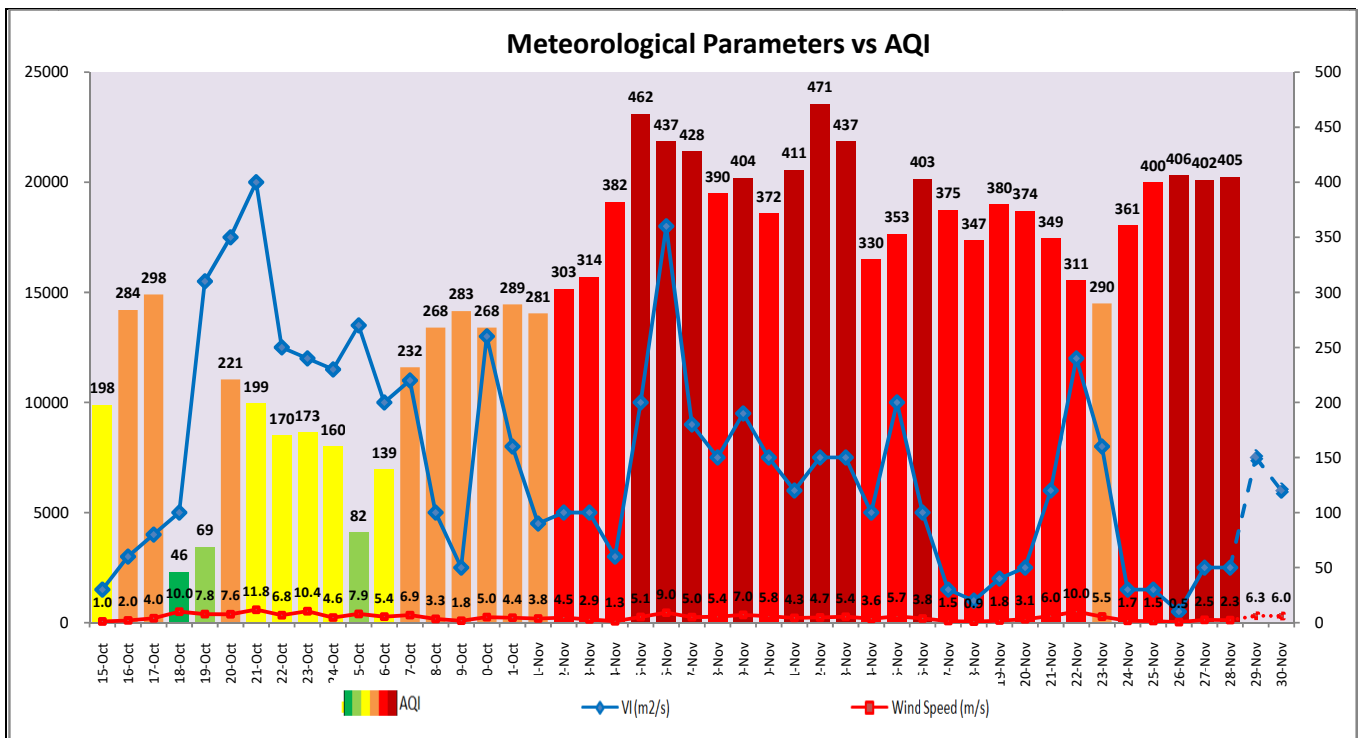
Dates	Wind speed (at surface) in km/h		Wind speed (at 900 m) in km/h	Wind Direction	
	As per IMD (at 17:30 hrs.)	As per windy.com (at 16:00 hrs.)	As per windy.com (at 16:00hrs)	As per IMD (at 17:30hrs.)	As per windy.com at 900m
November 29, 2021	CALM	09	26	-	NW
November 30, 2021	08	09	23	WNW	NW
December 01, 2021	05	07	14	NW	N

▪ **IMD Alert for Tomorrow (28.11.2021):**

The air quality is likely to improve but remain in Very Poor category tomorrow as calm or slow winds during night are unfavourable for effective dispersion of pollutants. The predominant surface wind is likely to be coming from West-Northwest direction of Delhi with wind speed 05-10 kmph, mainly clear sky and shallow fog in the morning. Ventilation index is likely to be 7,500 m²/s.

▪ **Active Fire Events (AFEs)**

Date	Punjab		Haryana	
	Nos. on the day	Total since September 21	Nos. on the day	Total since September 21
27.11.2021	19	71286	28	6946
27.11.2020	124	82842	26	4063



▪ **Hotspots for Today**

City	Station Name	AQI value	Air Quality	Prominent Pollutant
Delhi	Jahangirpuri, Delhi - DPCC	454	Severe	PM _{2.5}
	Rohini, Delhi - DPCC	449	Severe	PM _{2.5}
	Wazirpur, Delhi - DPCC	445	Severe	PM ₁₀
	Mundka, Delhi - DPCC	445	Severe	PM _{2.5}
	Chandni Chowk, Delhi - IITM	437	Severe	PM _{2.5}
Faridabad	Sector 11, Faridabad - HSPCB	452	Severe	PM ₁₀
	New Industrial Town, Faridabad - HSPCB	420	Severe	PM ₁₀
Gurugram	Teri Gram, Gurugram - HSPCB	383	Very Poor	PM _{2.5}
	Sector-51, Gurugram - HSPCB	373	Very Poor	PM _{2.5}
Ghaziabad	Loni, Ghaziabad - UPPCB	416	Severe	PM _{2.5}
	Vasundhara, Ghaziabad - UPPCB	342	Very Poor	PM _{2.5}
Greater Noida	Knowledge Park - III, Greater Noida - UPPCB	351	Very Poor	PM _{2.5}
Noida	Sector-116, Noida - UPPCB	372	Very Poor	PM ₁₀
	Sector-1, Noida - UPPCB	363	Very Poor	PM _{2.5}