



Central Pollution Control Board

Air Quality Status for Delhi & NCR

Dated – October 28, 2022



Current Air Quality Status:

Air Quality Index (AQI) (Average of past 24 hours)

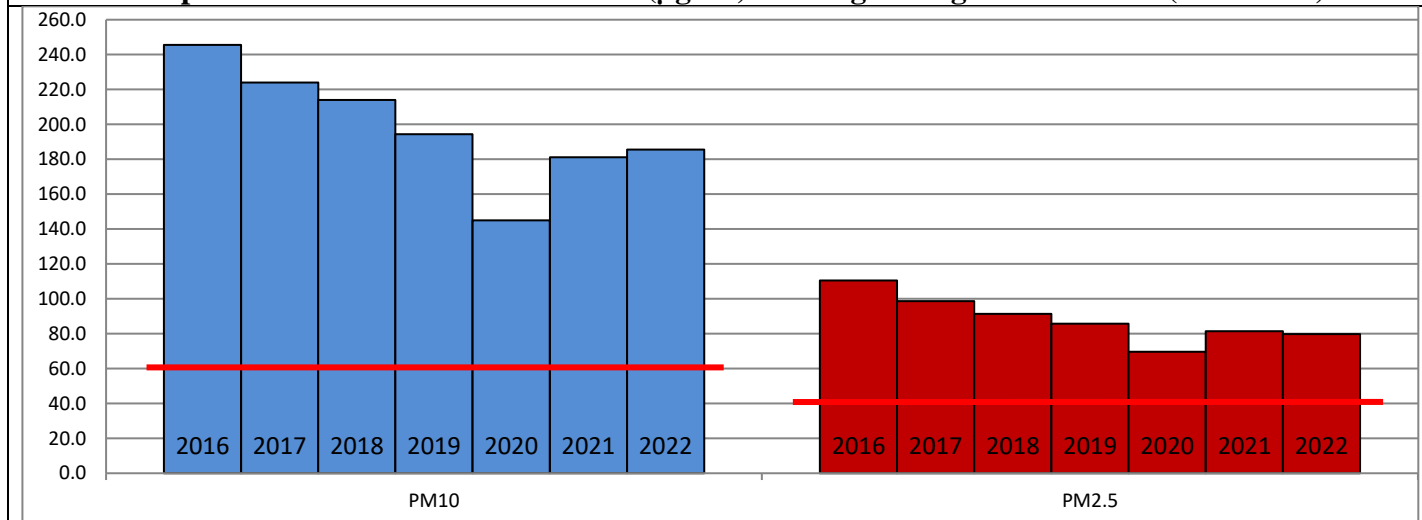
| | Air Quality | AQI Value | Prominent Pollutant |
|---------------|-------------|-----------|--------------------------------------|
| Delhi | Very Poor | 357 ↓ | PM ₁₀ , PM _{2.5} |
| Faridabad | Very Poor | 346 ↑ | PM _{2.5} |
| Ghaziabad | Very Poor | 384 ↑ | PM ₁₀ , PM _{2.5} |
| Greater Noida | Very Poor | 364 ↓ | PM ₁₀ , PM _{2.5} |
| Gurugram | Very Poor | 333 ↓ | PM _{2.5} |
| Noida | Very Poor | 371 ↑ | PM ₁₀ , PM _{2.5} |

*Data available for 36 stations in Delhi today. # ↓ ↑ arrows indicate a decrease/increase as compared to the value on the previous day.

Comparative status of AQI - Delhi from 01 January to 28 October 2016-2022

| Category | Year | 2016 | 2017 | 2018 | 2019 | 2020 | 2021 | 2022 | 2016 | 2017 | 2018 | 2019 | 2020 | 2021 | 2022 |
|-----------------------|-------------|------|------|------|------|------|------|------|------|------|------|------|------|------|------|
| | No. of days | 290 | 301 | 301 | 301 | 302 | 301 | 301 | | | | | | | |
| Good (0-50) | | 0 | 2 | 0 | 2 | 5 | 1 | 3 | | | | | | | |
| Satisfactory (51-100) | | 24 | 45 | 53 | 58 | 95 | 81 | 65 | 110 | 150 | 157 | 175 | 224 | 197 | 160 |
| Moderate (101-200) | | 86 | 103 | 104 | 115 | 124 | 115 | 92 | | | | | | | |
| Poor (201-300) | | 116 | 102 | 103 | 88 | 55 | 65 | 115 | | | | | | | |
| Very Poor (301-400) | | 58 | 48 | 35 | 31 | 21 | 33 | 25 | 180 | 151 | 144 | 126 | 78 | 104 | 141 |
| Severe (>401) | | 6 | 1 | 6 | 7 | 2 | 6 | 1 | | | | | | | |

Comparative status of PM₁₀ and PM_{2.5} (µg/m³) running average – Till Oct 26 (2016-2022)



Hotspots for Today:

*Details given overleaf

| | | | |
|-----------|--|---------------|-------------------------|
| Delhi | Anand Vihar, Jahangirpuri, Shadipur, Vivek Vihar, Wazirpur | Ghaziabad | Vasundhara, Indirapuram |
| Faridabad | Sector-16A, Sector-11 | Greater Noida | Knowledge Park-V |
| Gurugram | Sector-51 | Noida | Sector-1, Sector - 62 |

Forecast by IITM (Delhi):

| | Oct 29, 2022 | | Oct 30, 2022- Oct 31, 2022 | |
|-------------------|---------------|--------------|----------------------------|--------------|
| | Concentration | AQI Category | Concentration | AQI Category |
| PM ₁₀ | 332 | Poor | 362 | Very Poor |
| PM _{2.5} | 179 | Very Poor | 195 | Very Poor |

Wind Forecast for Delhi:

| | Wind speed (at surface) in km/h | | Wind speed (at 900 m) in km/h | Wind Direction | |
|--------------|---------------------------------|----------------------------------|--------------------------------|----------------|--------------------------|
| | As per IMD (range) | As per windy.com (at 16:00 hrs.) | As per windy.com (at 16:00hrs) | As per IMD | As per windy.com at 900m |
| Oct 29, 2022 | 06-08 | 03 | 08 | S/NE | W |
| Oct 30, 2022 | 06-08 | 05 | 11 | S/N | NW |
| Oct 31, 2022 | 06-08 | 02 | 11 | VARIABLE | NW |

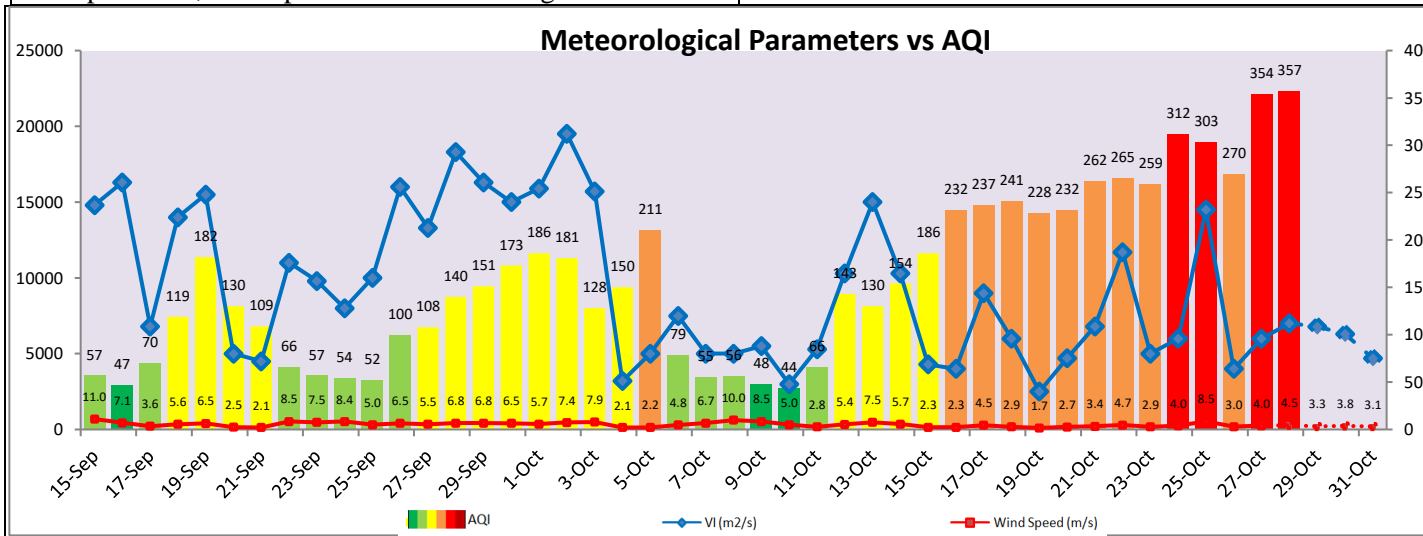
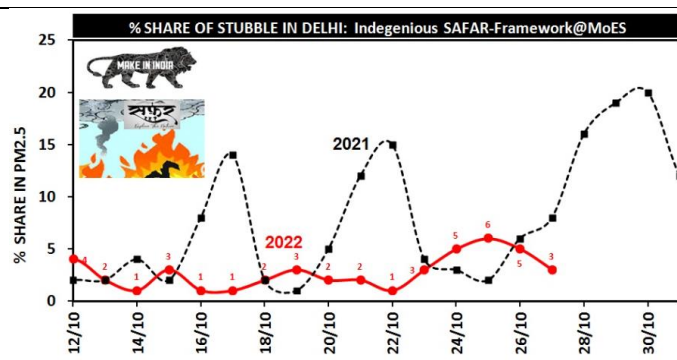
IMD Alert for Tomorrow (29.10.2022):

The air quality is likely to remain in Very Poor category from 29.10.2022 to 31.10.2022. The predominant surface wind is likely to be coming from South/Northeast direction in Delhi with wind speed 06-08 kmph and mainly clear sky& mist in the morning tomorrow. Ventilation index is likely to be 6,800 m²/s.

Active Fire Events (AFE):

| Date | Punjab | | Haryana | |
|------------|-----------------|--------------------------|-----------------|--------------------------|
| | Nos. on the day | Total since September 15 | Nos. on the day | Total since September 15 |
| 26.10.2022 | 1238 | 7036 | 123 | 1495 |
| 26.10.2021 | 329 | 6463 | 175 | 2010 |

* As per IITM, the impact of stubble burning is Moderate.



Hotspots for Today

| City | Station Name | AQI value | Air Quality | Prominent Pollutant |
|---------------|---|-----------|-------------|---------------------|
| Delhi | Anand Vihar, Delhi - DPCC | 458 | Very Poor | PM ₁₀ |
| | Jahangirpuri, Delhi - DPCC | 416 | Very Poor | PM _{2.5} |
| | Shadipur, Delhi - CPCB | 415 | Very Poor | PM _{2.5} |
| | Vivek Vihar, Delhi - DPCC | 406 | Very Poor | PM _{2.5} |
| | Wazirpur, Delhi - DPCC | 403 | Very Poor | PM ₁₀ |
| Faridabad | Sector 11, Faridabad - HSPCB | 405 | Very Poor | PM _{2.5} |
| | Sector- 16A, Faridabad - HSPCB | 375 | Poor | PM _{2.5} |
| Gurugram | Sector-51, Gurugram - HSPCB | 365 | Poor | PM _{2.5} |
| Ghaziabad | Vasundhara, Ghaziabad - UPPCB | 411 | Very Poor | PM ₁₀ |
| | Indirapuram, Ghaziabad - UPPCB | 408 | Very Poor | PM ₁₀ |
| Greater Noida | Knowledge Park - V, Greater Noida - UPPCB | 380 | Poor | PM ₁₀ |
| Noida | Sector - 62, Noida - IMD | 390 | Poor | PM _{2.5} |
| | Sector-1, Noida - UPPCB | 375 | Poor | PM ₁₀ |