



# Central Pollution Control Board

## Air Quality Status for Delhi & NCR

Dated – October 28, 2021



### Current Air Quality Status:

#### Air Quality Index (AQI) (Average of past 24 hours)

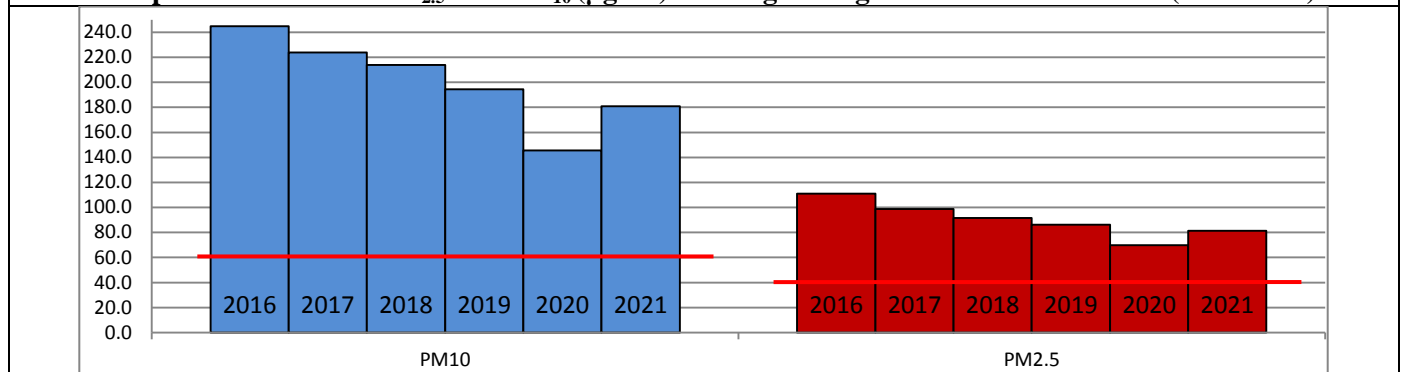
	Air Quality	AQI Value	Prominent Pollutant
Delhi	Poor	268	PM <sub>10</sub> , PM <sub>2.5</sub>
Faridabad	Poor	274	PM <sub>10</sub> , PM <sub>2.5</sub>
Ghaziabad	Poor	290	PM <sub>2.5</sub>
Greater Noida	Poor	275	PM <sub>2.5</sub>
Gurugram	Moderate	182	CO, PM <sub>2.5</sub>
Noida	Poor	267	PM <sub>10</sub> , PM <sub>2.5</sub>

\*Data available for 34 stations in Delhi today. # arrows indicate increase/decrease as compared to value on the previous day

#### Comparative status of AQI - Delhi from 01 January to 28 October 2016-2021

Category	Year No. of days	2016	2017	2018	2019	2020	2021	2016	2017	2018	2019	2020	2021
		290	301	301	301	302	301	2016	2017	2018	2019	2020	2021
Good (0–50)		0	2	0	2	5	1						
Satisfactory (51–100)		25	45	53	58	95	72	108	150	157	175	224	197
Moderate (101–200)		83	103	104	115	124	124						
Poor (201–300)		116	102	103	88	55	65						
Very Poor (301–400)		60	48	35	31	21	33	182	151	144	126	78	104
Severe (>401)		6	1	6	7	2	6						

#### Comparative status of PM<sub>2.5</sub> and PM<sub>10</sub> (µg/m<sup>3</sup>) running average - Delhi till October 27 (2016-2021)



#### Hotspots for Today:

\*Details given overleaf

Delhi	IHBAS-Dilshad Garden, Shadipur, Anand Vihar, NSIT Dwarka, Nehru Nagar	Greater Noida	Knowledge Park - III
Faridabad	Sector 11, Sector 30	Gurugram	Sector 51, NISE Gwal Pahari
Ghaziabad	Loni, Sanjay Nagar	Noida	Sector 116, Sector 1

#### Forecast by IITM:

Parameters	October 29, 2021		October 30, 2021– October 31, 2021	
	Concentration	AQI Category	Concentration	AQI Category
PM <sub>10</sub>	305	Poor	199	Moderate
PM <sub>2.5</sub>	146	Very Poor	95	Very Poor

**Wind Forecast for Delhi:**

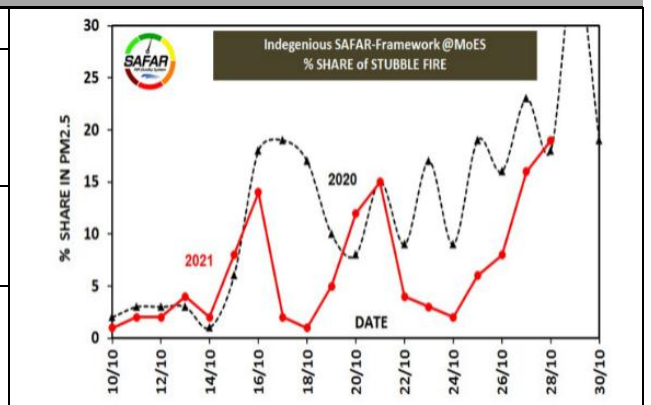
Dates	Wind speed (at surface) in km/h		Wind speed (at 900 m) in km/h	Wind Direction	
	As per IMD (at 17:30 hrs.)	As per windy.com (at 16:00 hrs.)	As per windy.com (at 16:00hrs)	As per IMD (at 17:30hrs.)	As per windy.com at 900m
October 29, 2021	08	08	17	WNW	NW
October 30, 2021	06	09	39	WNW	NW
October 31, 2021	06	10	21	NE	NW

**IMD Alert for Tomorrow (29.10.2021):**

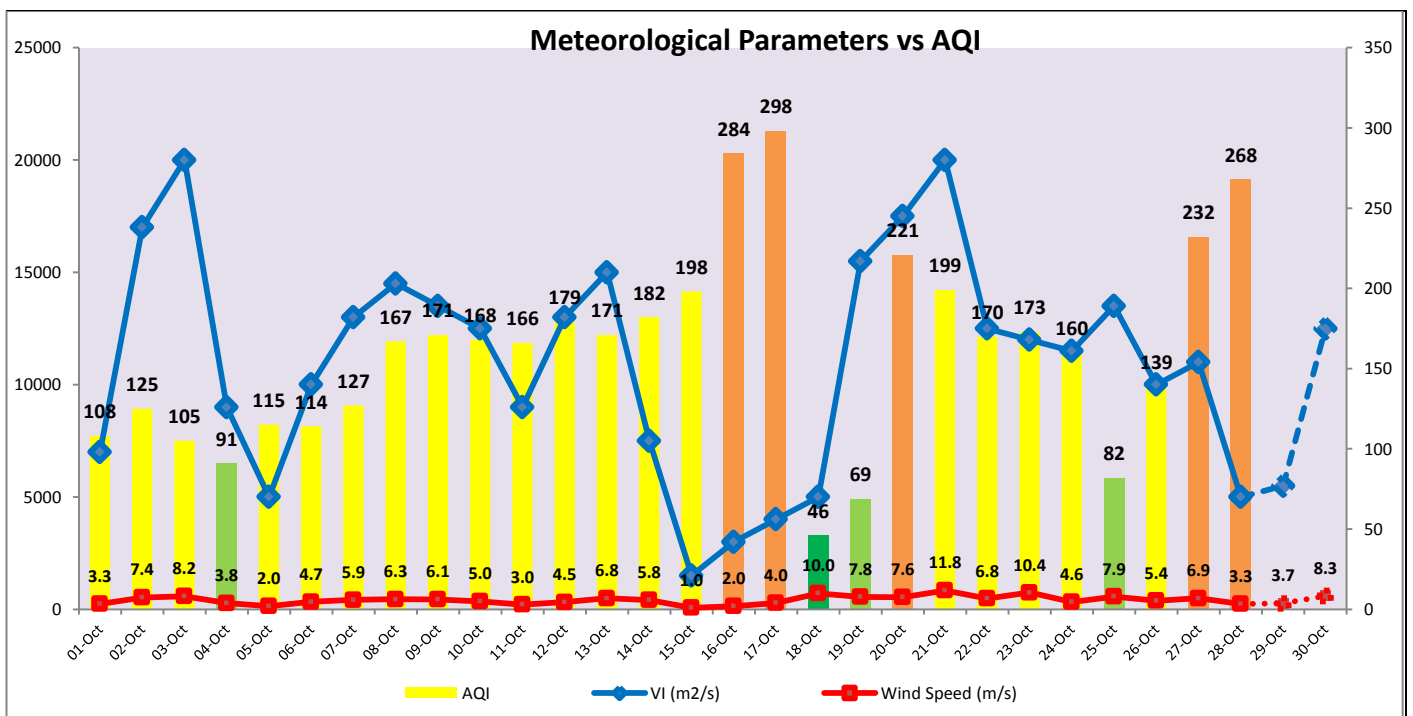
The air quality over Delhi-NCT is likely to deteriorate gradually and remain in Poor category on 29.10.2021 and Very Poor category on 30.10.2021. The predominant surface wind is likely to be coming from Northwest directions of Delhi with wind speed of 06-12 kmph, mainly clear sky and mist in the morning. Ventilation index is likely to be 5,500 m<sup>2</sup>/s.

**Active Fire Events (AFEs)**

Date	Punjab		Haryana	
	Nos. on the day	Total since September 21	Nos. on the day	Total since September 21
27.10.2021	279	6742	93	2103
27.10.2020	2130	18657	184	4577



The contribution of biomass burning in PM<sub>2.5</sub> concentration is likely to be approximately 20% on 28.10.2021.



▪ **Hotspots for Today**

City	Station Name	AQI value	Air Quality	Prominent Pollutant
Delhi	IHBAS, Dilshad Garden, Delhi - CPCB	346	Very Poor	PM <sub>2.5</sub>
	Shadipur, Delhi - CPCB	344	Very Poor	PM <sub>10</sub>
	Anand Vihar, Delhi - DPCC	327	Very Poor	PM <sub>10</sub>
	NSIT Dwarka, Delhi - CPCB	312	Very Poor	PM <sub>2.5</sub>
	Nehru Nagar, Delhi - DPCC	306	Very Poor	PM <sub>2.5</sub>
Faridabad	Sector 11, Faridabad - HSPCB	350	Very Poor	PM <sub>2.5</sub>
	Sector 30, Faridabad - HSPCB	296	Poor	PM <sub>2.5</sub>
Gurugram	NISE Gwal Pahari, Gurugram - IMD	259	Poor	PM <sub>2.5</sub>
	Sector-51, Gurugram - HSPCB	231	Poor	PM <sub>2.5</sub>
Ghaziabad	Loni, Ghaziabad - UPPCB	316	Very Poor	PM <sub>2.5</sub>
	Sanjay Nagar, Ghaziabad - UPPCB	280	Poor	PM <sub>2.5</sub>
Greater Noida	Knowledge Park - III, Greater Noida - UPPCB	280	Poor	PM <sub>2.5</sub>
Noida	Sector-116, Noida - UPPCB	280	Poor	PM <sub>2.5</sub>
	Sector-1, Noida - UPPCB	273	Poor	PM <sub>10</sub>