



Central Pollution Control Board

Air Quality Status for Delhi & NCR

Dated – September 28, 2022



Current Air Quality Status:

Air Quality Index (AQI) (Average of past 24 hours)

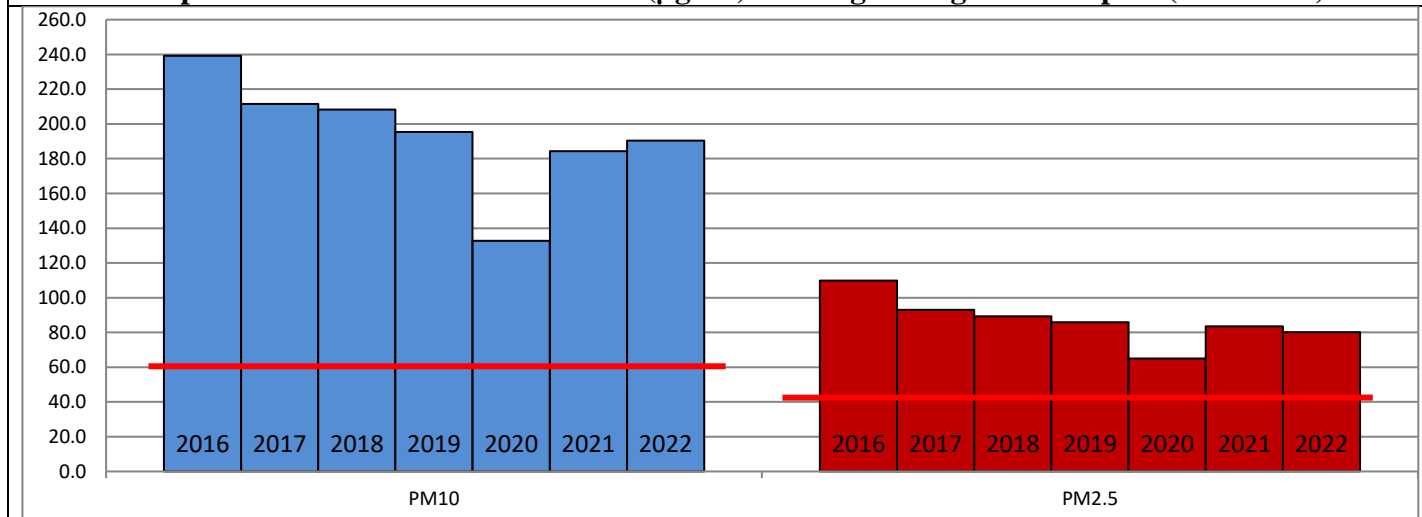
	Air Quality	AQI Value	Prominent Pollutant
Delhi	Moderate	140 ↓	PM ₁₀ , PM _{2.5} , NO ₂
Faridabad	Moderate	134 ↓	PM ₁₀
Ghaziabad	Moderate	156 ↓	PM ₁₀ , PM _{2.5}
Greater Noida	Moderate	174 ↓	PM ₁₀
Gurugram	Moderate	167 ↓	PM ₁₀ , PM _{2.5}
Noida	Moderate	151 ↓	PM _{2.5} , PM ₁₀

*Data available for 33 stations in Delhi today. # ↓ ↑ arrows indicate a decrease/increase as compared to the value on the previous day.

Comparative status of AQI - Delhi from 01 January to 28 September 2016-2022

Category	Year	2016	2017	2018	2019	2020	2021	2022	2016	2017	2018	2019	2020	2021	2022
	No. of days	260	271	271	271	272	271	271							
Good (0–50)		0	2	0	2	5	0	1							
Satisfactory (51–100)		24	45	53	52	95	76	61	105	144	151	163	216	172	144
Moderate (101–200)		81	97	98	109	116	96	82							
Poor (201–300)		95	91	86	74	39	60	105							
Very Poor (301–400)		54	36	28	27	15	33	21	155	127	120	108	56	99	127
Severe (>401)		6	0	6	7	2	6	1							

Comparative status of PM₁₀ and PM_{2.5} (µg/m³) running average – Till Sep 27 (2016-2022)



Hotspots for Today:

*Details given overleaf

Delhi	Anand Vihar, Shadipur, ITO, Wazirpur, IHBAS-Dilshad Garden	Ghaziabad	Vasundhara, Indirapuram
Faridabad	Sector-11	Greater Noida	Knowledge Park-III
Gurugram	Sector-51	Noida	Sector-116, Sector-62

Forecast by IITM (Delhi):

Parameters	Sep 29, 2022		Sep 30, 2022- Oct 01, 2022	
	Concentration	AQI Category	Concentration	AQI Category
PM ₁₀	137	Moderate	151	Moderate
PM _{2.5}	59	Satisfactory	65	Moderate

Wind Forecast for Delhi:

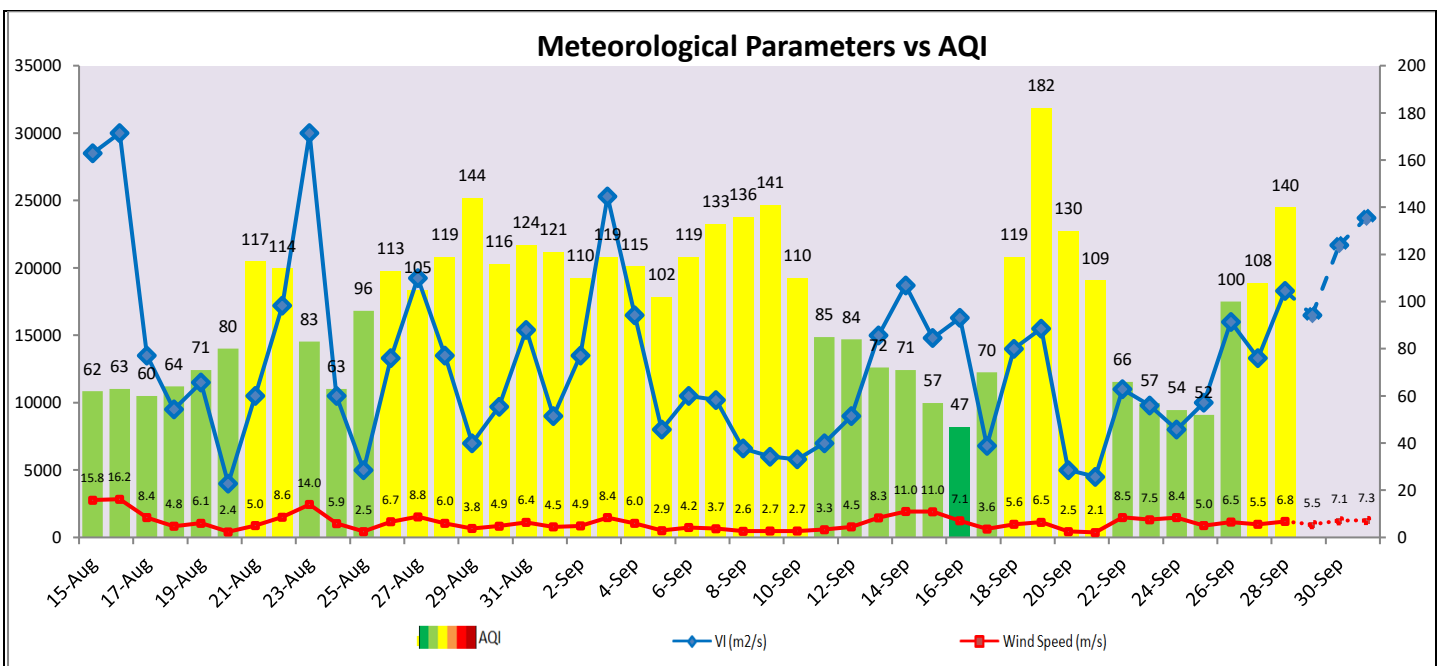
	Wind speed (at surface) in km/h		Wind speed (at 900 m) in km/h	Wind Direction	
	As per IMD (range)	As per windy.com (at 16:00 hrs.)	As per windy.com (at 16:00hrs)	As per IMD	As per windy.com at 900m
Sep 29, 2022	12	08	24	NW	NW
Sep 30, 2022	04-14	05	20	NW	NW
Oct 01, 2022	08-12	05	20	NW	NW

IMD Alert for Tomorrow (29.09.2022):

The air quality is likely to deteriorate but remain in Moderate category on 29.09.2022 and 30.09.2022. The predominant surface wind is likely to be calm in morning/evening/night hours and coming from Northwest direction in Delhi with wind speed 12 kmph during daytime and partly cloudy sky tomorrow. Ventilation index is likely to be 16,500m²/s.

Active Fire Events (AFE)s:

Date	Punjab		Haryana	
	Nos. on the day	Total since September 15	Nos. on the day	Total since September 15
28.09.2022	0	139	0	1
28.09.2021	28	124	1	1



▪ **Hotspots for Today**

City	Station Name	AQI value	Air Quality	Prominent Pollutant
Delhi	Anand Vihar, Delhi - DPCC	440	Severe	PM ₁₀
	Shadipur, Delhi - CPCB	172	Moderate	PM _{2.5}
	ITO, Delhi - CPCB	170	Moderate	O ₃
	Wazirpur, Delhi - DPCC	167	Moderate	PM ₁₀
	IHBAS, Dilshad Garden, Delhi - CPCB	166	Moderate	PM ₁₀
Faridabad	Sector 11, Faridabad - HSPCB	152	Moderate	PM ₁₀
Gurugram	Sector-51, Gurugram - HSPCB	264	Poor	PM _{2.5}
Ghaziabad	Vasundhara, Ghaziabad - UPPCB	184	Moderate	PM ₁₀
	Indirapuram, Ghaziabad - UPPCB	162	Moderate	PM ₁₀
Greater Noida	Knowledge Park - III, Greater Noida - UPPCB	175	Moderate	PM ₁₀
Noida	Sector - 62, Noida - IMD	156	Moderate	PM _{2.5}
	Sector-116, Noida - UPPCB	152	Moderate	PM ₁₀