



Central Pollution Control Board

Air Quality Status for Delhi & NCR

Dated – December 27, 2022



Current Air Quality Status:

Air Quality Index (AQI) (Average of past 24 hours)

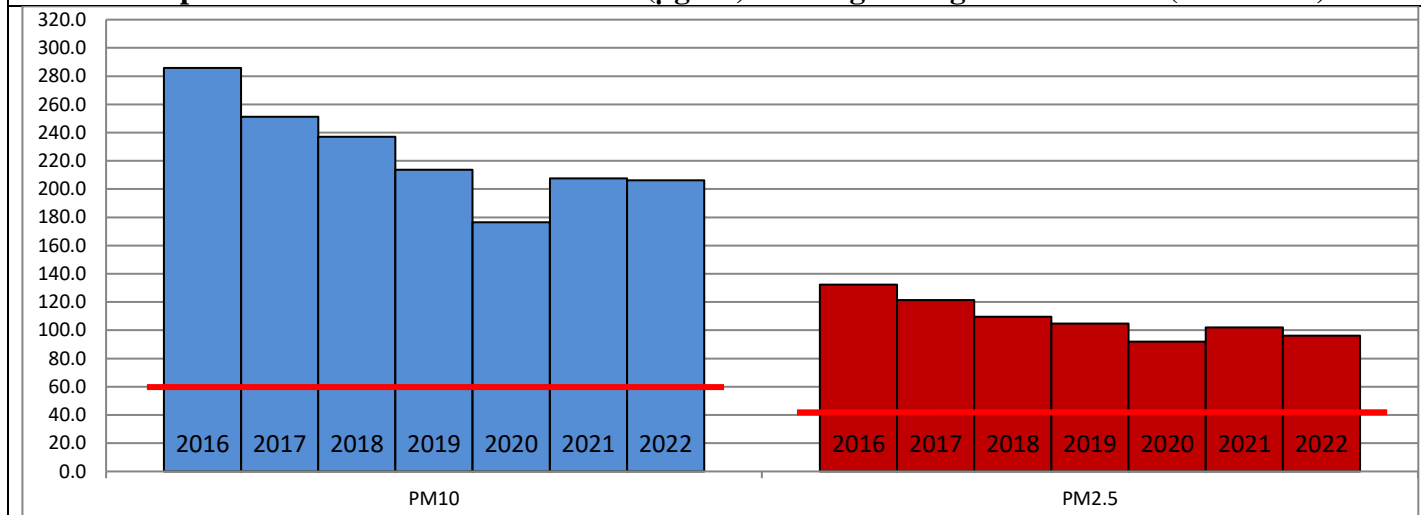
	Air Quality	AQI Value	Prominent Pollutant
Delhi	Very Poor	339 ↑	PM _{2.5}
Faridabad	Poor	285 ↓	PM _{2.5}
Ghaziabad	Poor	288 ↑	PM _{2.5}
Greater Noida	Very Poor	364 ↑	PM _{2.5}
Gurugram	Poor	252 ↓	PM _{2.5}
Noida	Very Poor	315 ↑	PM _{2.5}

*Data available for 39 stations in Delhi today. # ↓ ↑ arrows indicate a decrease/increase as compared to the value on the previous day.

Comparative status of AQI - Delhi from 01 January to 27 December 2016-2022

Category	Year	2016	2017	2018	2019	2020	2021	2022	2016	2017	2018	2019	2020	2021	2022
	No. of days	350	361	361	361	362	361	361							
Good (0-50)		0	2	0	2	5	1	3							
Satisfactory (51-100)		24	45	53	59	95	81	65	110	152	159	182	227	197	163
Moderate (101-200)		86	105	106	121	127	115	95							
Poor (201-300)		120	115	114	103	72	78	130							
Very Poor (301-400)		96	85	70	55	48	62	62	240	209	202	179	135	164	198
Severe (>401)		24	9	18	21	15	24	6							

Comparative status of PM₁₀ and PM_{2.5} (µg/m³) running average – Till Dec 26 (2016-2022)



Hotspots for Today:

*Details given overleaf

Delhi	Patparganj, Anand Vihar, Nehru Nagar, Wazirpur, Jahangirpuri	Ghaziabad	Vasundhara
Faridabad	Sector-16A, New Industrial Town	Greater Noida	Knowledge Park -III
Gurugram	Sector-51, Teri Gram	Noida	Sector-62, Sector-116

Forecast by IITM (Delhi):

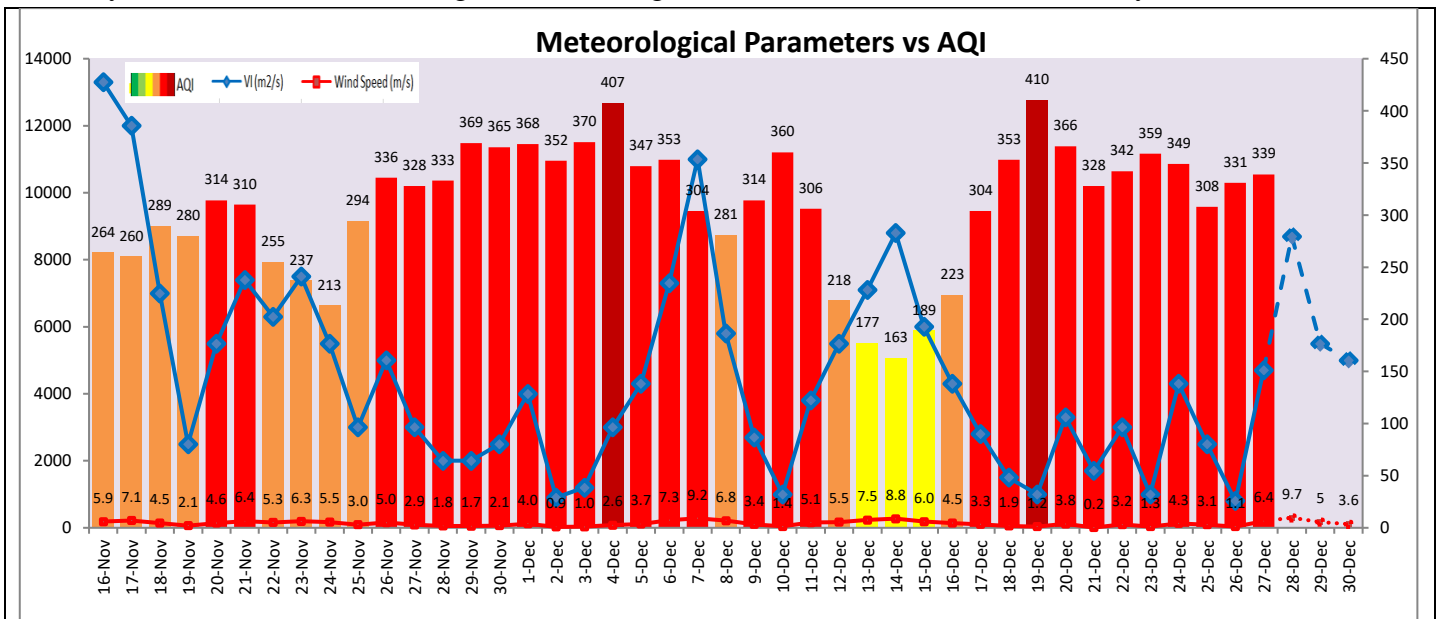
	Dec 28, 2022		Dec 29, 2022- Dec 30, 2022	
	Concentration	AQI Category	Concentration	AQI Category
PM ₁₀	209	Poor	229	Poor
PM _{2.5}	139	Very Poor	153	Very Poor

Wind Forecast for Delhi:

	Wind speed (at surface) in km/h		Wind speed (at 900 m) in km/h	Wind Direction	
	As per IMD (range)	As per windy.com (at 16:00 hrs.)	As per windy.com (at 16:00hrs)	As per IMD	As per windy.com at 900m
Dec 28, 2022	12-18	14	51	NW	NW
Dec 29, 2022	08-12	07	10	Variable	W
Dec 30, 2022	12-15	04	27	NW	W

IMD Alert for Tomorrow (28.12.2022):

The air quality is likely to improve and reach in Poor category on 28.12.2022 and 29.12.2022. The predominant surface wind is likely to be coming from Northwest direction in Delhi with wind speed 12-18 kmph, mainly clear sky and moderate to dense fog in the morning tomorrow. Ventilation index is likely to be 8,700 m²/s.



Hotspots for Today

City	Station Name	AQI value	Air Quality	Prominent Pollutant
Delhi	Patparganj, Delhi - DPCC	407	Severe	PM _{2.5}
	Anand Vihar, Delhi - DPCC	402	Severe	PM _{2.5}
	Nehru Nagar, Delhi - DPCC	394	Very Poor	PM _{2.5}
	Jahangirpuri, Delhi - DPCC	391	Very Poor	PM _{2.5}
	Wazirpur, Delhi - DPCC	391	Very Poor	PM _{2.5}
Faridabad	Sector- 16A, Faridabad - HSPCB	352	Very Poor	PM _{2.5}
	New Industrial Town, Faridabad - HSPCB	287	Poor	PM ₁₀
Gurugram	Teri Gram, Gurugram - HSPCB	287	Poor	PM _{2.5}
	Sector-51, Gurugram - HSPCB	272	Poor	PM _{2.5}
Ghaziabad	Vasundhara, Ghaziabad - UPPCB	366	Very Poor	PM _{2.5}
Greater Noida	Knowledge Park - III, Greater Noida - UPPCB	383	Very Poor	PM _{2.5}
Noida	Sector-116, Noida - UPPCB	377	Very Poor	PM _{2.5}
	Sector - 62, Noida - IMD	368	Very Poor	PM _{2.5}