



Central Pollution Control Board

Air Quality Status for Delhi & NCR

Dated – November 27, 2021



Current Air Quality Status:

Air Quality Index (AQI) (Average of past 24 hours)

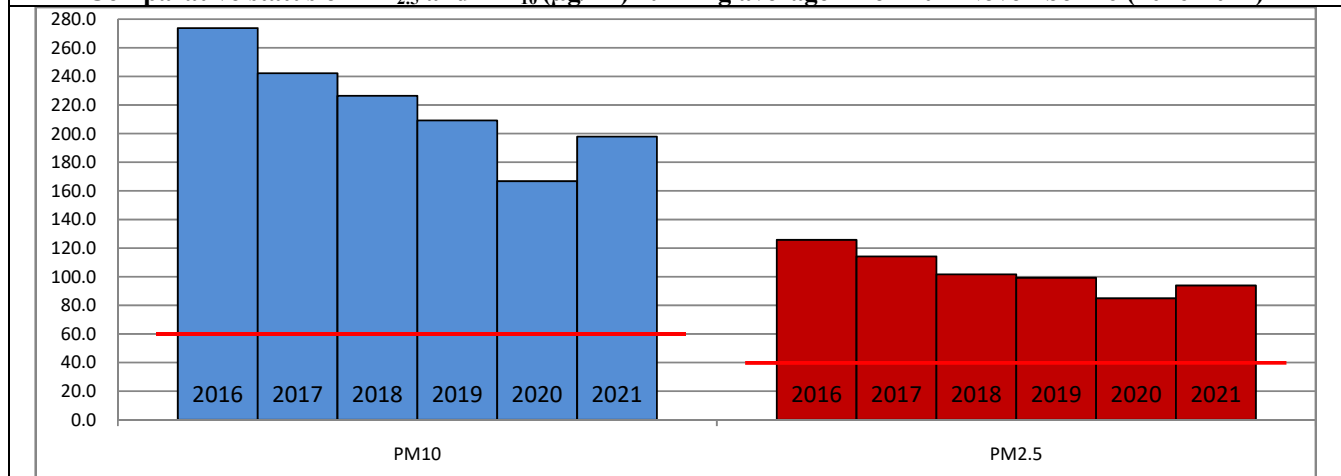
	Air Quality	AQI Value	Prominent Pollutant
Delhi	Severe	402 ↓	PM ₁₀ , PM _{2.5}
Faridabad	Severe	416 ↓	PM ₁₀ , PM _{2.5}
Ghaziabad	Very Poor	368 ↓	PM _{2.5}
Greater Noida	Very Poor	352 ↓	PM ₁₀ , PM _{2.5}
Gurugram	Very Poor	362 ↓	PM _{2.5}
Noida	Very Poor	381 ↓	PM ₁₀ , PM _{2.5}

*Data available for 36 stations in Delhi today. # ↑ ↓ arrows indicate increase/decrease as compared to value on the previous day

Comparative status of AQI - Delhi from 01 January to 27 November 2016-2021

Category	Year	2016	2017	2018	2019	2020	2021	2016	2017	2018	2019	2020	2021
	No. of days	320	331	331	332	333	332						
Good (0-50)		0	2	0	2	5	1						
Satisfactory (51-100)		25	45	53	58	95	72	108	150	158	176	226	197
Moderate (101-200)		83	103	105	116	126	124						
Poor (201-300)		118	105	110	97	64	71						
Very Poor (301-400)		76	68	51	43	32	48	212	181	173	156	107	135
Severe (>401)		18	8	12	16	11	16						

Comparative status of PM_{2.5} and PM₁₀ (µg/m³) running average - Delhi till November 26 (2016-2021)



* The PM values are 24 hourly averages (6 am to 6 am)

Hotspots for Today:

*Details given overleaf

Delhi	Jahangirpuri, Wazirpur, Rohini, Anand Vihar, Vivek Vihar	Gurugram	Teri Gram, Vikas Sadan
Faridabad	Sector-11, New Industrial Town	Greater Noida	Knowledge Park – III
Ghaziabad	Loni, Vasundhara	Noida	Sector -62, Sector - 116

Forecast by IITM:

Parameters	November 28, 2021		November 29, 2021– November 30, 2021	
	Concentration	AQI Category	Concentration	AQI Category
PM ₁₀	328	Poor	337	Poor
PM _{2.5}	192	Very Poor	198	Very Poor

▪ **Wind Forecast for Delhi:**

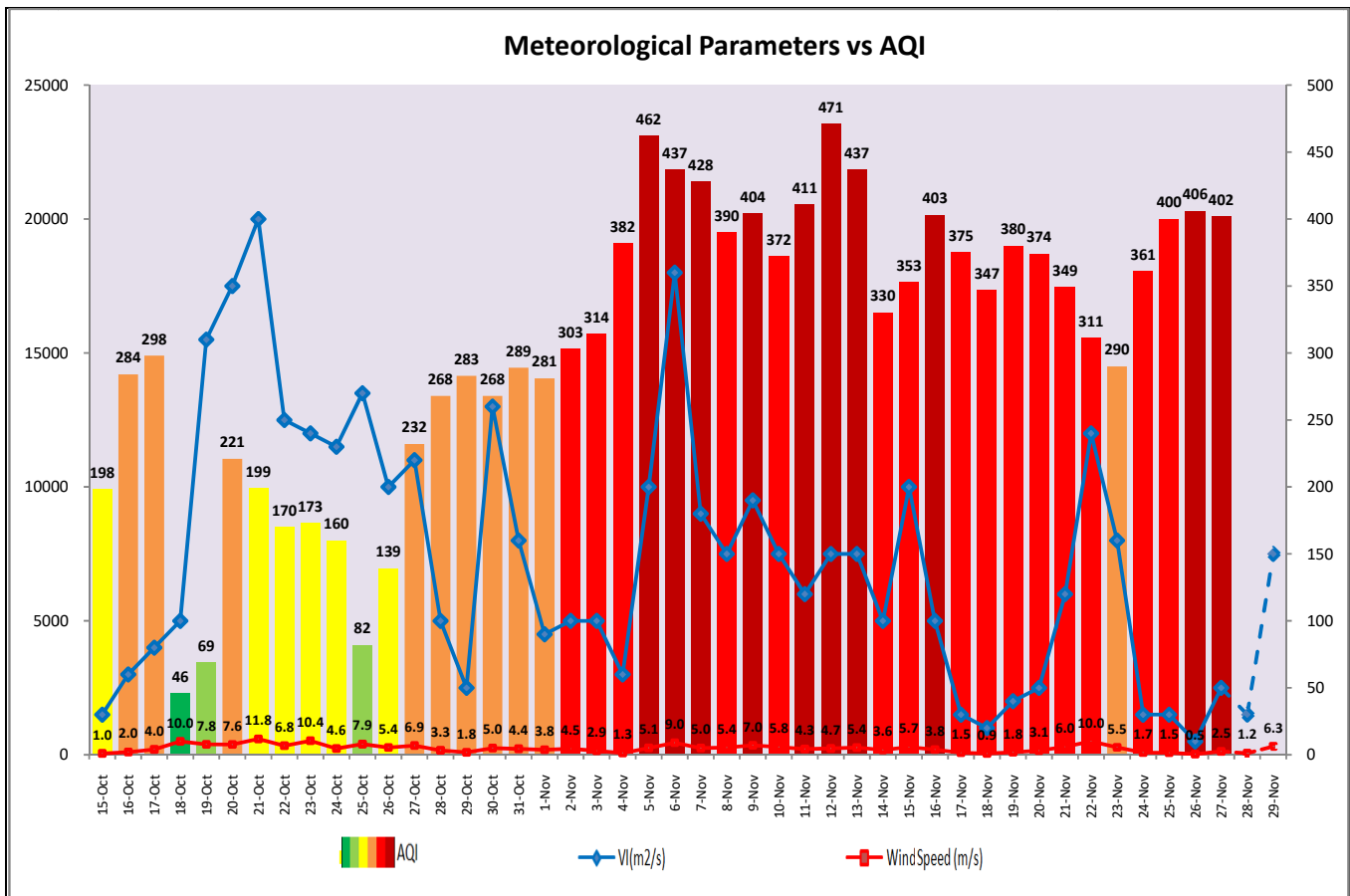
Dates	Wind speed (at surface) in km/h		Wind speed (at 900 m) in km/h	Wind Direction	
	As per IMD (at 17:30 hrs.)	As per windy.com (at 16:00 hrs.)	As per windy.com (at 16:00hrs)	As per IMD (at 17:30hrs.)	As per windy.com at 900m
November 28, 2021	08	02	03	E	W
November 29, 2021	04	09	27	NW	NW
November 30, 2021	10	10	18	NW	N

▪ **IMD Alert for Tomorrow (27.11.2021):**

The air quality is likely to remain in Very Poor category tomorrow as calm or slow winds during night are unfavourable for effective dispersion of pollutants. The predominant surface wind is likely to be coming from East direction of Delhi with wind speed of 04 kmph during morning hours. It is likely to remain calm during day time, and is likely to be coming from Northwest direction of Delhi with wind speed of 04 kmph during evening/night hours, mainly clear sky and shallow fog in the morning. Ventilation index is likely to be 1,500 m²/s.

▪ **Active Fire Events (AFE)**

Date	Punjab		Haryana	
	Nos. on the day	Total since September 21	Nos. on the day	Total since September 21
26.11.2021	21	71267	48	6918
26.11.2020	62	82718	0	4037



▪ Hotspots for Today

City	Station Name	AQI value	Air Quality	Prominent Pollutant
Delhi	Jahangirpuri, Delhi - DPCC	453	Severe	PM _{2.5}
	Rohini, Delhi - DPCC	453	Severe	PM _{2.5}
	Wazirpur, Delhi - DPCC	450	Severe	PM ₁₀
	Anand Vihar, Delhi - DPCC	447	Severe	PM _{2.5}
	Vivek Vihar, Delhi - DPCC	442	Severe	PM _{2.5}
Faridabad	Sector 11, Faridabad - HSPCB	440	Severe	PM ₁₀
	New Industrial Town, Faridabad - HSPCB	429	Severe	PM ₁₀
Gurugram	Vikas Sadan, Gurugram - HSPCB	384	Very Poor	PM _{2.5}
	Teri Gram, Gurugram - HSPCB	369	Very Poor	PM _{2.5}
Ghaziabad	Loni, Ghaziabad - UPPCB	446	Severe	PM _{2.5}
	Vasundhara, Ghaziabad - UPPCB	367	Very Poor	PM _{2.5}
Greater Noida	Knowledge Park - III, Greater Noida - UPPCB	360	Very Poor	PM _{2.5}
Noida	Sector - 62, Noida - IMD	430	Severe	PM ₁₀
	Sector-116, Noida - UPPCB	381	Very Poor	PM _{2.5}