



Central Pollution Control Board

Air Quality Status for Delhi & NCR

Dated – October 27, 2022



Current Air Quality Status:

Air Quality Index (AQI) (Average of past 24 hours)

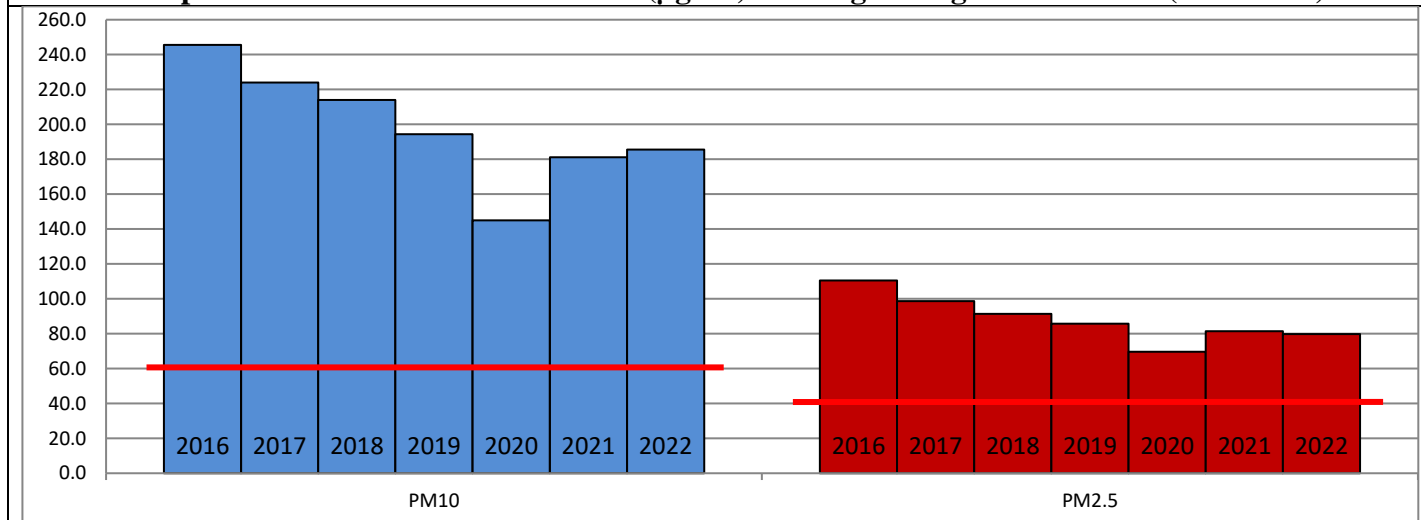
	Air Quality	AQI Value	Prominent Pollutant
Delhi	Very Poor	354 ↓	PM ₁₀ , PM _{2.5}
Faridabad	Very Poor	315 ↑	PM ₁₀ , PM _{2.5}
Ghaziabad	Very Poor	373 ↑	PM ₁₀ , PM _{2.5}
Greater Noida	Very Poor	368 ↑	PM _{2.5}
Gurugram	Very Poor	362 ↑	PM _{2.5}
Noida	Very Poor	354 ↑	PM ₁₀ , PM _{2.5}

*Data available for 27 stations in Delhi today. # ↓ ↑ arrows indicate a decrease/increase as compared to the value on the previous day.

Comparative status of AQI - Delhi from 01 January to 27 October 2016-2022

Category	Year	2016	2017	2018	2019	2020	2021	2022	2016	2017	2018	2019	2020	2021	2022
	No. of days	289	300	300	300	301	300	300							
Good (0–50)		0	2	0	2	5	1	3							
Satisfactory (51–100)		24	45	53	58	95	81	65	110	150	157	175	224	197	160
Moderate (101–200)		86	103	104	115	124	115	92							
Poor (201–300)		116	102	103	88	54	64	115							
Very Poor (301–400)		57	47	34	30	21	33	24	179	150	143	125	77	103	140
Severe (>401)		6	1	6	7	2	6	1							

Comparative status of PM₁₀ and PM_{2.5} (µg/m³) running average – Till Oct 26 (2016-2022)



Hotspots for Today:

*Details given overleaf

Delhi	Anand Vihar, Jahangirpuri, Ashok Vihar, Wazirpur, NSIT Dwarka	Ghaziabad	Loni
Faridabad	Sector-11	Greater Noida	Knowledge Park-III
Gurugram	Sector-51	Noida	Sector-116

Forecast by IITM (Delhi):

	Oct 28, 2022		Oct 29, 2022- Oct 30, 2022	
	Concentration	AQI Category	Concentration	AQI Category
PM ₁₀	311	Poor	339	Poor
PM _{2.5}	173	Very Poor	189	Very Poor

Wind Forecast for Delhi:

	Wind speed (at surface) in km/h		Wind speed (at 900 m) in km/h	Wind Direction	
	As per IMD (range)	As per windy.com (at 16:00 hrs.)	As per windy.com (at 16:00hrs)	As per IMD	As per windy.com at 900m
Oct 28, 2022	04-06	07	08	SE	NW
Oct 29, 2022	04-08	05	12	N/NE	NW
Oct 30, 2022	06-08	04	22	N/SE	NW

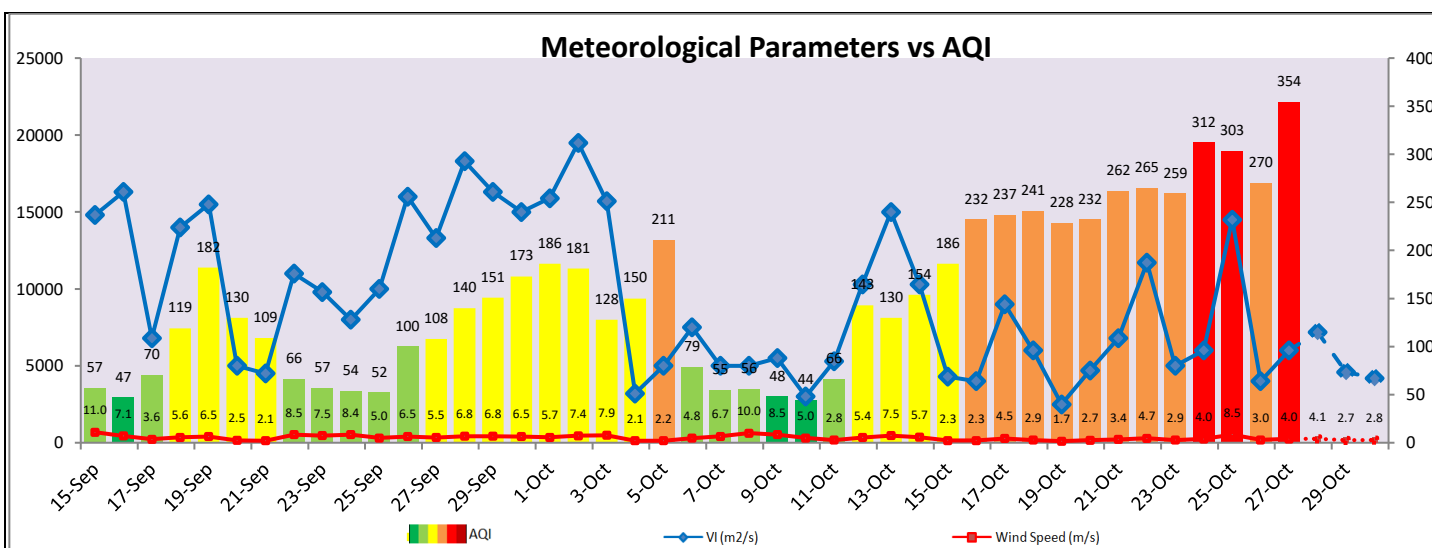
IMD Alert for Tomorrow (28.10.2022):

The air quality is likely to remain in Very Poor category from 28.10.2022 to 30.10.2022. The predominant surface wind is likely to be coming from Southeast direction in Delhi with wind speed 04-06 kmph and clear sky tomorrow. Ventilation index is likely to be 7,200 m²/s.

Active Fire Events (AFE):

Date	Punjab		Haryana	
	Nos. on the day	Total since September 15	Nos. on the day	Total since September 15
26.10.2022	1238	7036	123	1495
26.10.2021	329	6463	175	2010

* As per IITM, the impact of stubble burning is meagre.



Hotspots for Today

City	Station Name	AQI value	Air Quality	Prominent Pollutant
Delhi	Anand Vihar, Delhi - DPCC	421	Severe	PM ₁₀
	Ashok Vihar, Delhi - DPCC	405	Severe	PM _{2.5}
	Wazirpur, Delhi - DPCC	396	Very Poor	PM _{2.5}
	Jahangirpuri, Delhi - DPCC	392	Very Poor	PM _{2.5}
	NSIT Dwarka, Delhi - CPCB	386	Very Poor	PM _{2.5}
Faridabad	Sector 11, Faridabad - HSPCB	419	Severe	PM _{2.5}
Gurugram	Sector-51, Gurugram - HSPCB	374	Very Poor	PM _{2.5}
Ghaziabad	Loni, Ghaziabad - UPPCB	445	Severe	PM _{2.5}
Greater Noida	Knowledge Park - III, Greater Noida - UPPCB	382	Very Poor	PM _{2.5}
Noida	Sector-116, Noida - UPPCB	384	Very Poor	PM _{2.5}