



Central Pollution Control Board

Air Quality Status for Delhi & NCR

Dated – October 27, 2021



Current Air Quality Status:

Air Quality Index (AQI) (Average of past 24 hours)

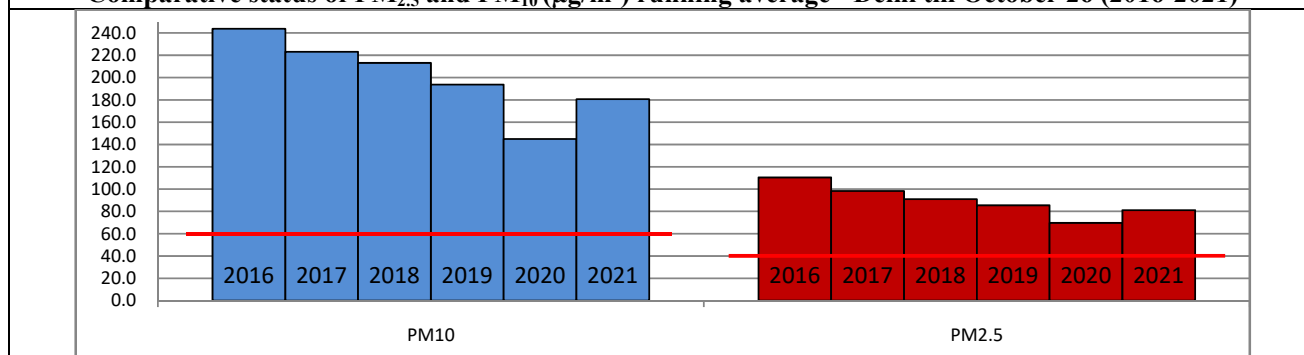
	Air Quality	AQI Value	Prominent Pollutant
Delhi	Poor	232 ↓	PM ₁₀
Faridabad	Poor	249 ↑	PM ₁₀ , PM _{2.5}
Ghaziabad	Poor	278 ↓	PM _{2.5}
Greater Noida	Poor	232 ↓	PM _{2.5}
Gurugram	Moderate	168 ↓	CO, PM ₁₀ , PM _{2.5}
Noida	Poor	228 ↓	PM ₁₀ , PM _{2.5}

*Data available for 37 stations in Delhi today. # ↑ ↓ arrows indicate increase/decrease as compared to value on the previous day

Comparative status of AQI - Delhi from 01 January to 27 October 2016-2021

Category	Year	2016	2017	2018	2019	2020	2021	2016	2017	2018	2019	2020	2021
	No. of days	289	300	300	300	301	300						
Good (0–50)		0	2	0	2	5	1						
Satisfactory (51–100)		25	45	53	58	95	72	108	150	157	175	224	197
Moderate (101–200)		83	103	104	115	124	124						
Poor (201–300)		116	102	103	88	54	64						
Very Poor (301–400)		59	47	34	30	21	33	181	150	143	125	77	103
Severe (>401)		6	1	6	7	2	6						

Comparative status of PM_{2.5} and PM₁₀ (µg/m³) running average - Delhi till October 26 (2016-2021)



Hotspots for Today:

*Details given overleaf

Delhi	Anand Vihar, Shadipur, Jahangirpuri, Dwarka-Sector 8, Sonia Vihar	Greater Noida	Knowledge Park - V
Faridabad	Sector 11, Sector 30	Gurugram	Sector 51, NISE Gwal Pahari
Ghaziabad	Loni, Sanjay Nagar	Noida	Sector 116, Sector 1

Forecast by IITM:

Parameters	October 28, 2021		October 29, 2021– October 30, 2021	
	Concentration	AQI Category	Concentration	AQI Category
PM ₁₀	262	Poor	315	Poor
PM _{2.5}	116	Poor	144	Very Poor

▪ **Wind Forecast for Delhi:**

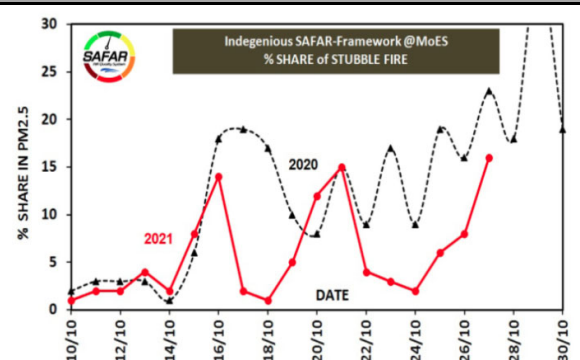
Dates	Wind speed (at surface) in km/h		Wind speed (at 900 m) in km/h	Wind Direction	
	As per IMD (at 17:30 hrs.)	As per windy.com (at 16:00 hrs.)	As per windy.com (at 16:00hrs)	As per IMD (at 17:30hrs.)	As per windy.com at 900m
October 28, 2021	12	08	21	NNW	NW
October 29, 2021	12	08	24	NNW	NW
October 30, 2021	18	09	40	NW	NW

▪ **IMD Alert for Tomorrow (28.10.2021):**

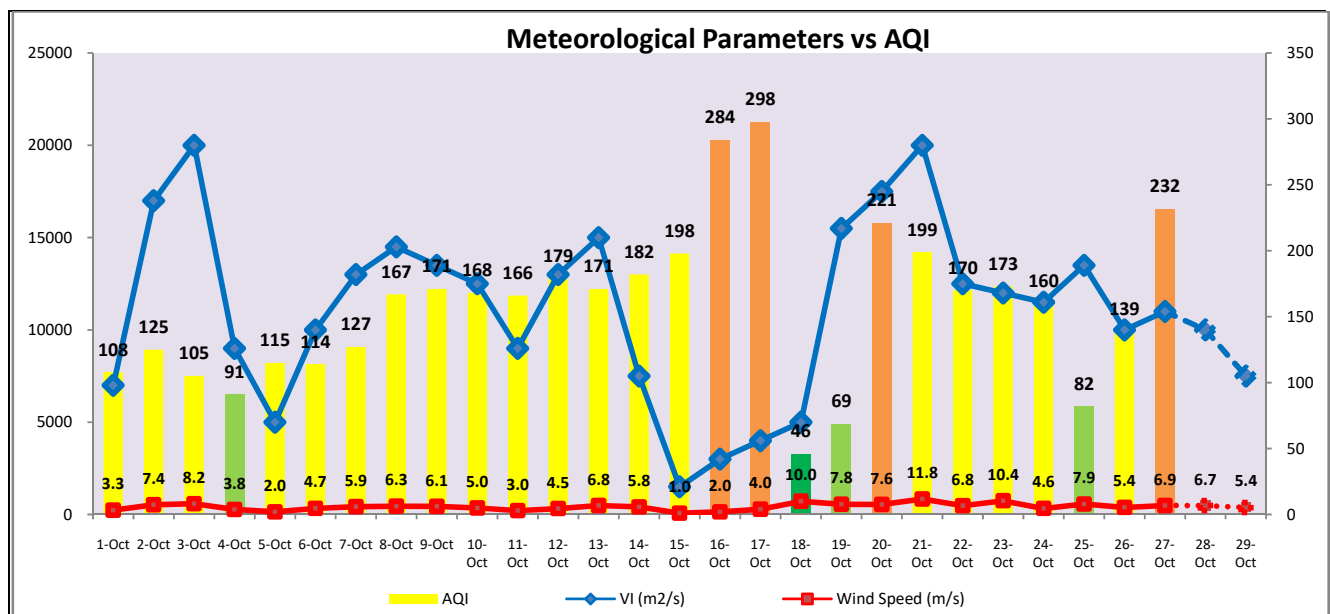
The air quality over Delhi-NCT is likely to deteriorate gradually but remain in Poor category on 28.10.2021 and 29.10.2021. The predominant surface wind is likely to be coming from Northwest directions of Delhi with wind speed of 10-12 kmph, mainly clear sky and mist in the morning. Ventilation index is likely to be 10,000 m²/s.

▪ **Active Fire Events (AFE)**

Date	Punjab		Haryana	
	Nos. on the day	Total since September 21	Nos. on the day	Total since September 21
26.10.2021	329	6463	175	2010
26.10.2020	2047	16518	194	4393



The contribution of biomass burning in PM_{2.5} concentration is likely to be approximately 20% on 27.10.2021.



▪ Hotspots for Today

City	Station Name	AQI value	Air Quality	Prominent Pollutant
Delhi	Anand Vihar, Delhi - DPCC	313	Very Poor	PM ₁₀
	Shadipur, Delhi - CPCB	312	Very Poor	PM ₁₀
	Jahangirpuri, Delhi - DPCC	285	Poor	PM ₁₀
	Dwarka-Sector 8, Delhi - DPCC	282	Poor	PM _{2.5}
	Sonia Vihar, Delhi - DPCC	281	Poor	PM _{2.5}
Faridabad	Sector 11, Faridabad - HSPCB	302	Very Poor	PM _{2.5}
	Sector 30, Faridabad - HSPCB	285	Poor	PM _{2.5}
Gurugram	Sector-51, Gurugram - HSPCB	231	Poor	PM _{2.5}
	NISE Gwal Pahari, Gurugram - IMD	211	Poor	PM _{2.5}
Ghaziabad	Loni, Ghaziabad - UPPCB	316	Very Poor	PM _{2.5}
	Sanjay Nagar, Ghaziabad - UPPCB	266	Poor	PM _{2.5}
Greater Noida	Knowledge Park - V, Greater Noida - UPPCB	244	Poor	PM _{2.5}
Noida	Sector-116, Noida - UPPCB	238	Poor	PM _{2.5}
	Sector-1, Noida - UPPCB	236	Poor	PM ₁₀