



Central Pollution Control Board

Air Quality Status for Delhi & NCR

Dated – June 27, 2022



Current Air Quality Status:

Air Quality Index (AQI) (Average of past 24 hours)

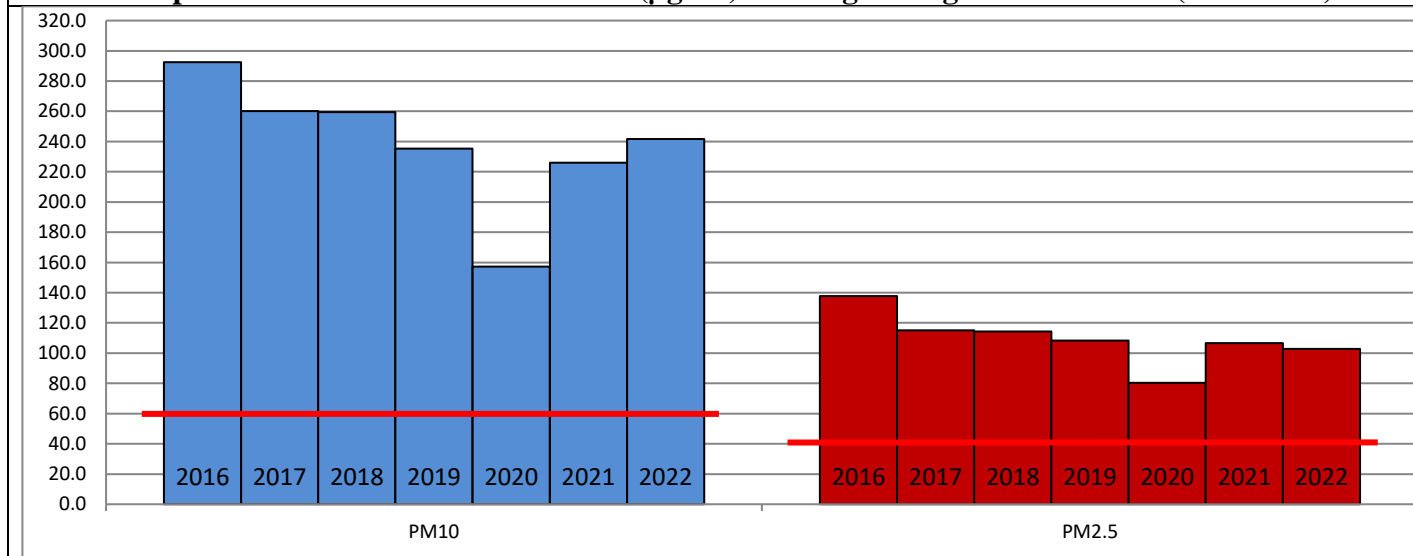
	Air Quality	AQI Value	Prominent Pollutant
Delhi	Moderate	127 ↓	PM _{2.5} , PM ₁₀ , O ₃
Faridabad	Moderate	129 ↓	PM ₁₀
Ghaziabad	Moderate	111 ↓	PM ₁₀ , CO
Greater Noida	Moderate	137 ↓	PM ₁₀
Gurugram	Moderate	140 ↓	PM _{2.5} , PM ₁₀
Noida	Moderate	126 ↓	PM ₁₀

*Data available for 32 stations in Delhi today. # ↓ ↑ arrows indicate a decrease/increase as compared to the value on the previous day.

Comparative status of AQI - Delhi from 01 January to 27 June 2016-2022

Category	Year	2016	2017	2018	2019	2020	2021	2022	2016	2017	2018	2019	2020	2021	2022
	No. of days	174	178	178	178	179	178	178							
Good (0–50)		0	0	0	0	1	0	0							
Satisfactory (51–100)		0	0	2	3	35	11	7	27	53	62	77	125	82	51
Moderate (101–200)		27	53	60	74	89	71	44							
Poor (201–300)		87	89	82	68	37	57	105							
Very Poor (301–400)		54	36	28	26	15	33	21	147	125	116	101	54	96	127
Severe (>401)		6	0	6	7	2	6	1							

Comparative status of PM₁₀ and PM_{2.5} (µg/m³) running average – Till June 26 (2016-2022)



Hotspots for Today:

*Details given overleaf

Delhi	Shadipur, Bawana, Patparganj, Narela, Wazirpur	Gurugram	-
Faridabad	New Industrial Town	Greater Noida	Knowledge Park-V
Ghaziabad	Vasundhara	Noida	Sector-62, Sector-116

Forecast by IITM (Delhi):

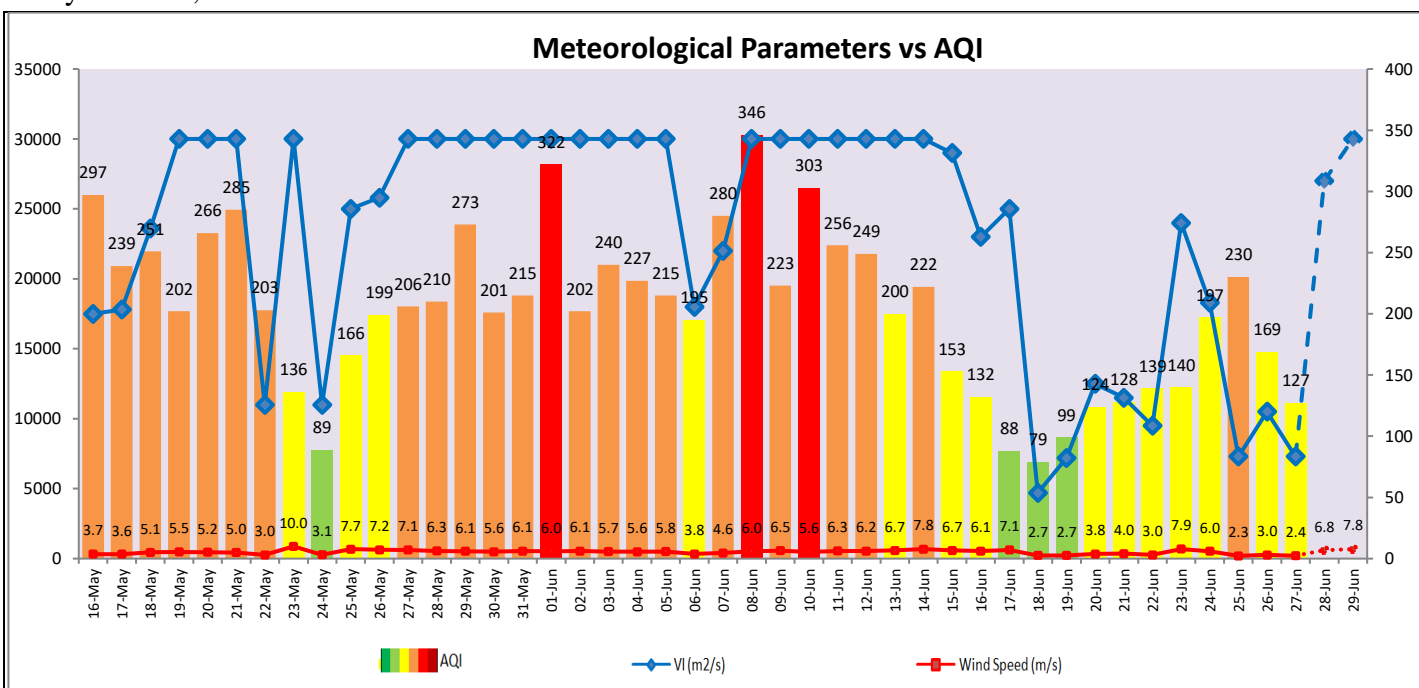
Parameters	June 28, 2022		June 29, 2022- June 30, 2022	
	Concentration	AQI Category	Concentration	AQI Category
PM ₁₀	120	Moderate	93	Satisfactory
PM _{2.5}	44	Satisfactory	34	Satisfactory

Wind Forecast for Delhi:

	Wind speed (at surface) in km/h		Wind speed (at 900 m) in km/h	Wind Direction	
	As per IMD (at 17:30 hrs.)	As per windy.com (at 16:00 hrs.)	As per windy.com (at 16:00hrs)	As per IMD (at 17:30hrs.)	As per windy.com at 900m
June 28, 2022	15	05	09	SE	W
June 29, 2022	28	13	20	E	NW
June 30, 2022	18	12	12	ESE	SE

IMD Alert for Tomorrow (28.06.2022):

The air quality is likely to be improved from 28.06.2022 to 29.06.2022 and will remain in Moderate category. The predominant surface wind is likely to be coming from Southeast direction in Delhi with wind speed 12-15 kmph, and partly cloudy sky with possibility of thundery development tomorrow. Ventilation index is likely to be 27,000 m²/s.



Hotspots for Today

City	Station Name	AQI value	Air Quality	Prominent Pollutant
Delhi	Shadipur, Delhi - CPCB	165	Moderate	PM ₁₀
	Bawana, Delhi - DPCC	164	Moderate	PM ₁₀
	Patparganj, Delhi - DPCC	161	Moderate	PM _{2.5}
	Narela, Delhi - DPCC	152	Moderate	PM ₁₀
	Wazirpur, Delhi - DPCC	142	Moderate	PM ₁₀
Faridabad	New Industrial Town, Faridabad - HSPCB	155	Moderate	PM ₁₀
Ghaziabad	Vasundhara, Ghaziabad - UPPCB	130	Moderate	PM ₁₀
Greater Noida	Knowledge Park - V, Greater Noida - UPPCB	163	Moderate	PM ₁₀
Noida	Sector - 62, Noida - IMD	130	Moderate	PM ₁₀
	Sector-116, Noida - UPPCB	129	Moderate	PM ₁₀