



Central Pollution Control Board

Air Quality Status for Delhi &NCR

Dated – March 27, 2022



Current Air Quality Status:

Air Quality Index (AQI) (Average of past 24 hours)

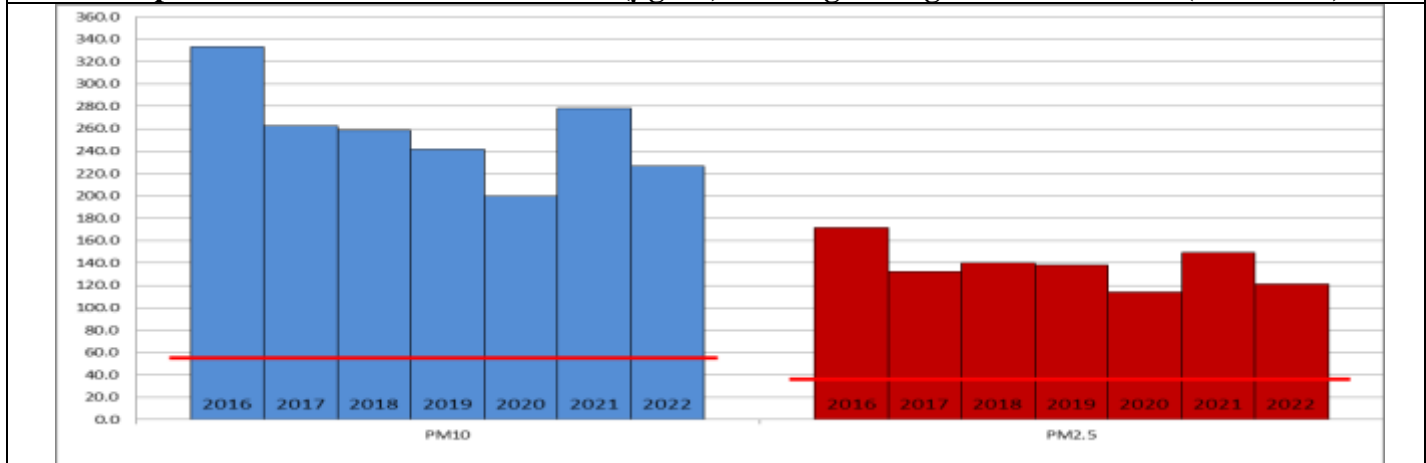
	Air Quality	AQI Value	Prominent Pollutant
Delhi	Moderate	195↓	PM _{2.5} , PM ₁₀
Faridabad	Poor	220↑	PM _{2.5} , PM ₁₀
Ghaziabad	Poor	225↓	PM _{2.5} , PM ₁₀
Greater Noida	Moderate	174↓	PM ₁₀
Gurugram	Poor	228↑	PM _{2.5} , PM ₁₀
Noida	Moderate	172↓	PM ₁₀

*Data available for 34 stations in Delhi today. # ↓ ↑ arrows indicate increase/decrease as compared to value on the previous day

Comparative status of AQI - Delhi from 01 January to 27 March 2016-2022

Category	Year	2016	2017	2018	2019	2020	2021	2022	2016	2017	2018	2019	2020	2021	2022
		No. of days	83	86	86	86	87	86	86						
Good (0–50)		0	0	0	0	0	0	0							
Satisfactory (51–100)		0	0	0	1	8	0	3	8	15	24	31	35	13	27
Moderate (101–200)		8	15	24	30	27	13	24							
Poor (201–300)		27	47	38	27	35	36	41							
Very Poor (301–400)		42	24	21	21	15	31	17	75	71	62	55	52	73	59
Severe (>401)		6	0	3	7	2	6	1							

Comparative status of PM_{2.5} and PM₁₀ (µg/m³) running average – Till March 26 (2016-2022)



Hotspots for Today:

*Details given overleaf

Delhi	Mundka, Bawana, ITO, NSIT Dwarka, Dwarka-Sector-8	Gurugram	Sector-51, Teri Gram
Faridabad	New Industrial Town, Sector-11	Greater Noida	Knowledge Park - III
Ghaziabad	Loni, Sanjay Nagar	Noida	Sector-1, Sector-62

Forecast by IITM:

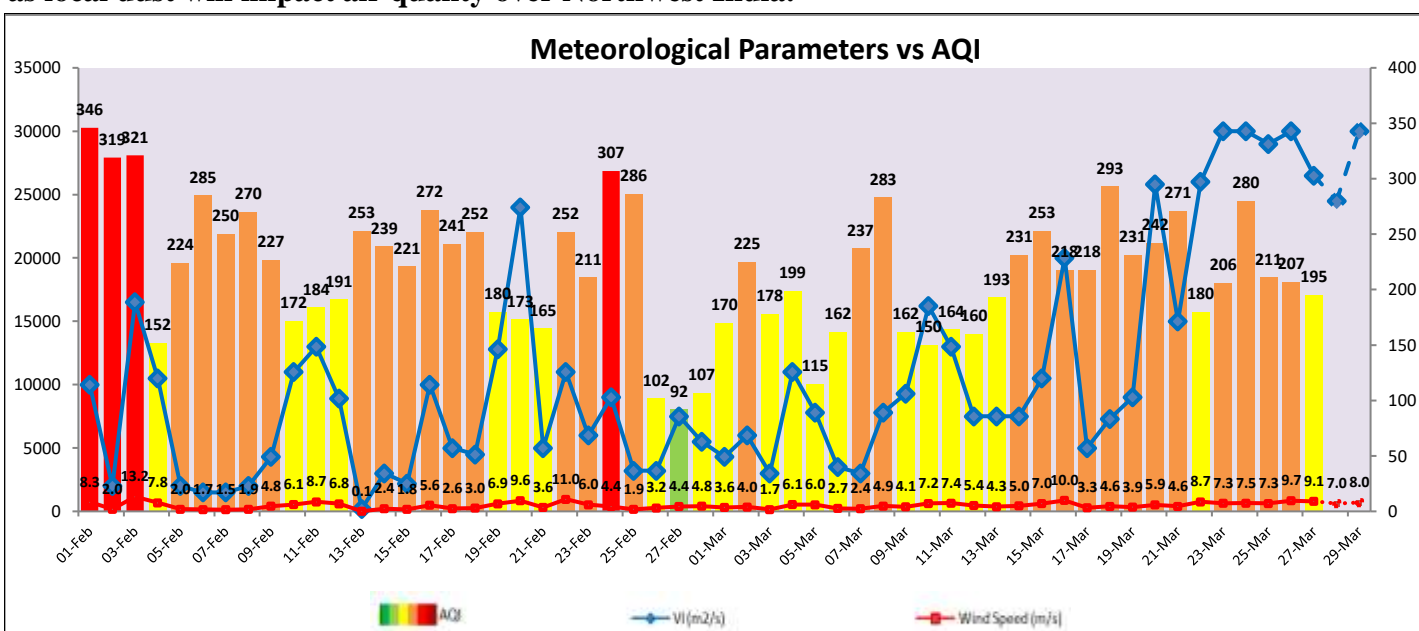
Parameters	March 28, 2022		March 29, 2022- March 30, 2022	
	Concentration	AQI Category	Concentration	AQI Category
PM ₁₀	266	Poor	287	Poor
PM _{2.5}	103	Poor	110	Poor

Wind Forecast for Delhi:

	Wind speed (at surface) in km/h		Wind speed (at 900 m) in km/h	Wind Direction	
	As per IMD (at 17:30 hrs.)	As per windy.com (at 16:00 hrs.)	As per windy.com (at 16:00hrs)	As per IMD (at 17:30hrs.)	As per windy.com at 900m
March 28, 2022	16	08	28	WNW	NW
March 29, 2022	18	08	22	WNW	NW
March 30, 2022	12	04	13	NW	NW

IMD Alert for Tomorrow (28.03.2022):

The air quality over Delhi-NCT is likely to remain in Moderate to lower end of Poor category on 28.03.2022. The predominant surface wind is likely to be coming from West direction of Delhi with wind speed 04-16 kmph and clear sky on tomorrow. Ventilation index is likely to be greater than 24,500 m²/s. **Dust raising winds are likely over parts of Rajasthan and Gujarat and transport of dust from these regions as well as local dust will impact air quality over Northwest India.**



Hotspots for Today

City	Station Name	AQI value	Air Quality	Prominent Pollutant
Delhi	NSIT Dwarka, Delhi - CPCB	318	Very Poor	PM _{2.5}
	ITO, Delhi - CPCB	275	Poor	PM _{2.5}
	Bawana, Delhi - DPCC	266	Poor	PM ₁₀
	Mundka, Delhi - DPCC	262	Poor	PM ₁₀
	Dwarka-Sector 8, Delhi - DPCC	245	Poor	PM ₁₀
Faridabad	New Industrial Town, Faridabad - HSPCB	289	Poor	PM ₁₀
	Sector 11, Faridabad - HSPCB	258	Poor	PM _{2.5}
Gurugram	Teri Gram, Gurugram - HSPCB	274	Poor	PM _{2.5}
	Sector-51, Gurugram - HSPCB	225	Poor	PM ₁₀
Ghaziabad	Sanjay Nagar, Ghaziabad - UPPCB	253	Poor	PM ₁₀
	Loni, Ghaziabad - UPPCB	242	Poor	PM _{2.5}
Greater Noida	Knowledge Park - III, Greater Noida - UPPCB	187	Moderate	PM ₁₀
Noida	Sector - 62, Noida - IMD	194	Moderate	PM ₁₀
	Sector-1, Noida - UPPCB	184	Moderate	PM ₁₀