



Central Pollution Control Board

Air Quality Status for Delhi & NCR

Dated – December 26, 2021



Current Air Quality Status:

Air Quality Index (AQI) (Average of past 24 hours)

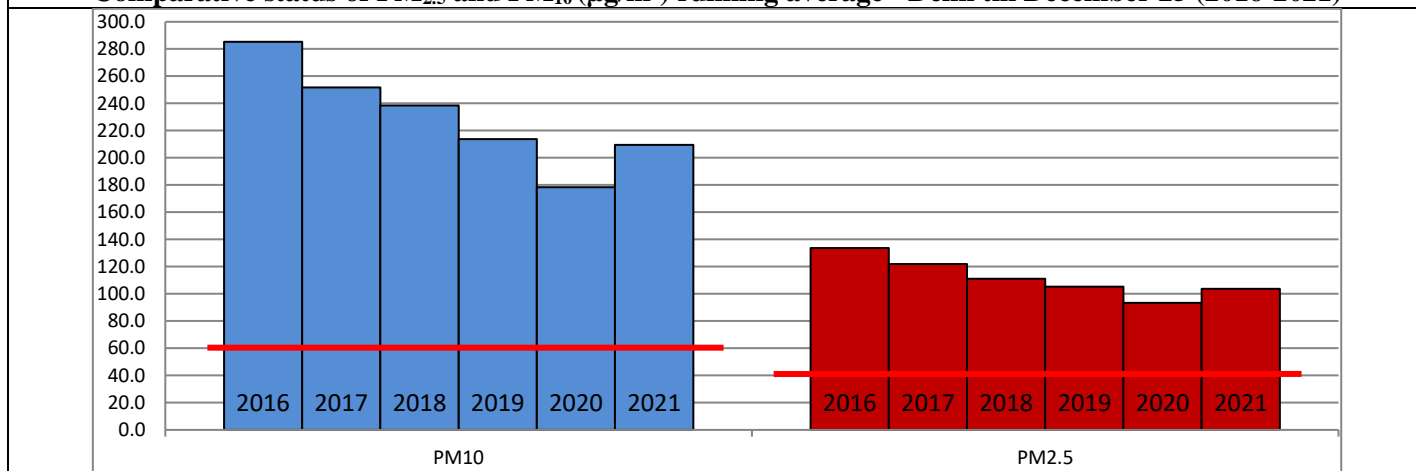
	Air Quality	AQI Value	Prominent Pollutant
Delhi	Severe	459↑	PM _{2.5}
Faridabad	Severe	447↑	PM _{2.5} , PM ₁₀
Ghaziabad	Severe	429↑	PM _{2.5}
Greater Noida	Severe	426↑	PM _{2.5}
Gurugram	Very Poor	375↑	PM _{2.5}
Noida	Severe	435↑	PM _{2.5}

*Data available for 35 stations in Delhi today. # ↓, ↑ arrows indicate increase/decrease as compared to value on the previous day

Comparative status of AQI - Delhi from 01 January to 26 December 2016-2021

Category	Year	2016	2017	2018	2019	2020	2021	2016	2017	2018	2019	2020	2021
	No. of days	349	360	360	361	362	361						
Good (0–50)		0	2	0	2	5	1						
Satisfactory (51–100)		25	45	53	59	95	72	108	152	159	182	227	197
Moderate (101–200)		83	105	106	121	127	124						
Poor (201–300)		120	115	114	104	73	78						
Very Poor (301–400)		97	84	69	54	47	62	241	208	201	179	135	164
Severe (>401)		24	9	18	21	15	24						

Comparative status of PM_{2.5} and PM₁₀ (µg/m³) running average - Delhi till December 25 (2016-2021)



Hotspots for Today:

*Details given overleaf

Delhi	Jahangirpuri, Rohini, Bawana, Mundka, Ashok Vihar	Gurugram	Vikas Sadan, Sector-51
Faridabad	Sector-30, Sector-11	Greater Noida	Knowledge Park - III
Ghaziabad	Sanjay Nagar, Loni	Noida	Sector – 116, Sector – 1

Forecast by IITM:

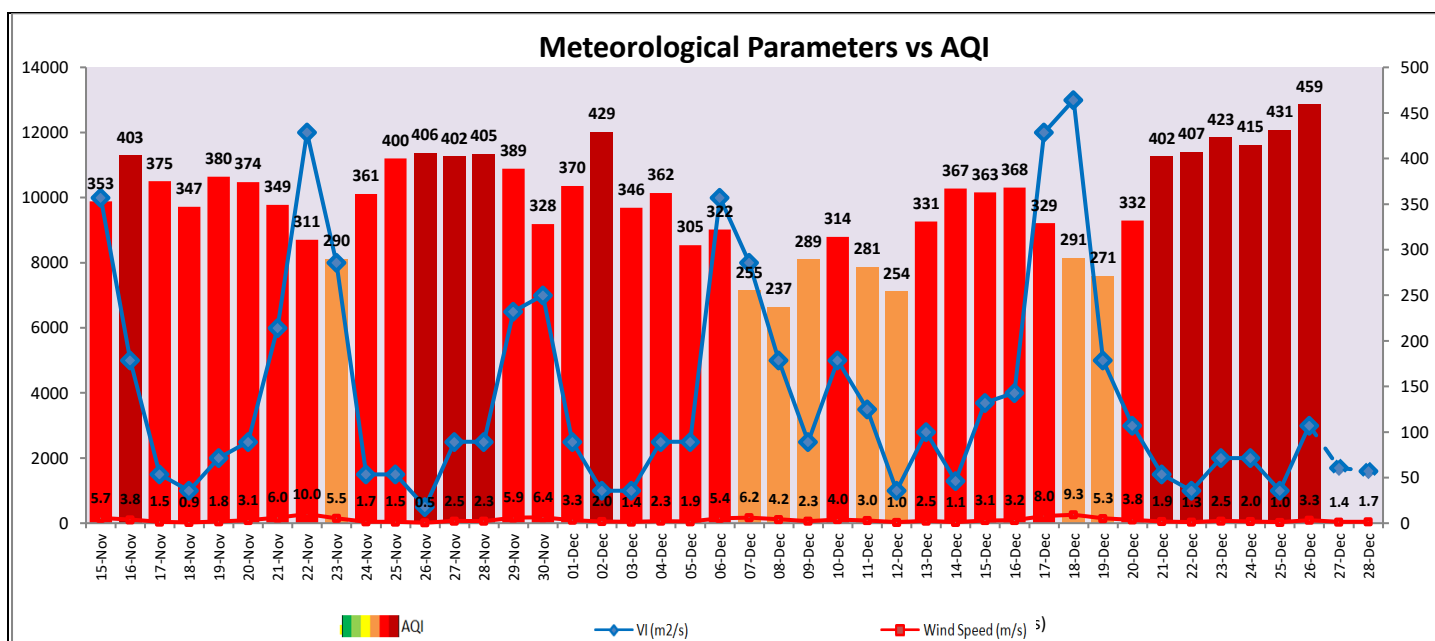
Parameters	December 27, 2021		December 28, 2021– December 29, 2021	
	Concentration	AQI Category	Concentration	AQI Category
PM ₁₀	376	Very Poor	331	Poor
PM _{2.5}	241	Very Poor	213	Very Poor

Wind Forecast for Delhi:

Dates	Wind speed (at surface) in km/h		Wind speed (at 900 m) in km/h	Wind Direction	
	As per IMD (at 17:30 hrs.)	As per windy.com (at 16:00 hrs.)	As per windy.com (at 16:00hrs)	As per IMD (at 17:30hrs.)	As per windy.com at 900m
December 27, 2021	8	5	6	SE	E
December 28, 2021	8	4	8	ESE	NE
December 29, 2021	8	7	14	SE	N

IMD Alert for Tomorrow (27.12.2021):

The air quality is likely to improve and remain in Very Poor to Poor category on 27.12.2021 and Poor category on 28.12.2021. The predominant surface wind is likely to be coming from East direction of Delhi having wind speed 08-15 kmph, generally cloudy sky with very light rain/drizzle and shallow to moderate fog in the morning. Ventilation index is likely to be 1,700 m²/s.



Hotspots for Today

City	Station Name	AQI value	Air Quality	Prominent Pollutant
Delhi	Jahangirpuri, Delhi - DPCC	495	Severe	PM _{2.5}
	Rohini, Delhi - DPCC	495	Severe	PM _{2.5}
	Bawana, Delhi - DPCC	490	Severe	PM _{2.5}
	Mundka, Delhi - DPCC	488	Severe	PM _{2.5}
	Ashok Vihar, Delhi - DPCC	486	Severe	PM _{2.5}
Faridabad	Sector 30, Faridabad - HSPCB	448	Severe	PM ₁₀
Gurugram	Sector 11, Faridabad - HSPCB	449	Severe	PM _{2.5}
	Sector-51, Gurugram - HSPCB	379	Very Poor	PM _{2.5}
Ghaziabad	Vikas Sadan, Gurugram - HSPCB	376	Very Poor	PM _{2.5}
	Loni, Ghaziabad - UPPCB	495	Severe	PM _{2.5}
Greater Noida	Sanjay Nagar, Ghaziabad - UPPCB	422	Severe	PM _{2.5}
Noida	Knowledge Park - III, Greater Noida - UPPCB	454	Severe	PM _{2.5}
	Sector-116, Noida - UPPCB	454	Severe	PM _{2.5}