



Central Pollution Control Board

Air Quality Status for Delhi & NCR

Dated – November 26, 2021



Current Air Quality Status:

Air Quality Index (AQI) (Average of past 24 hours)

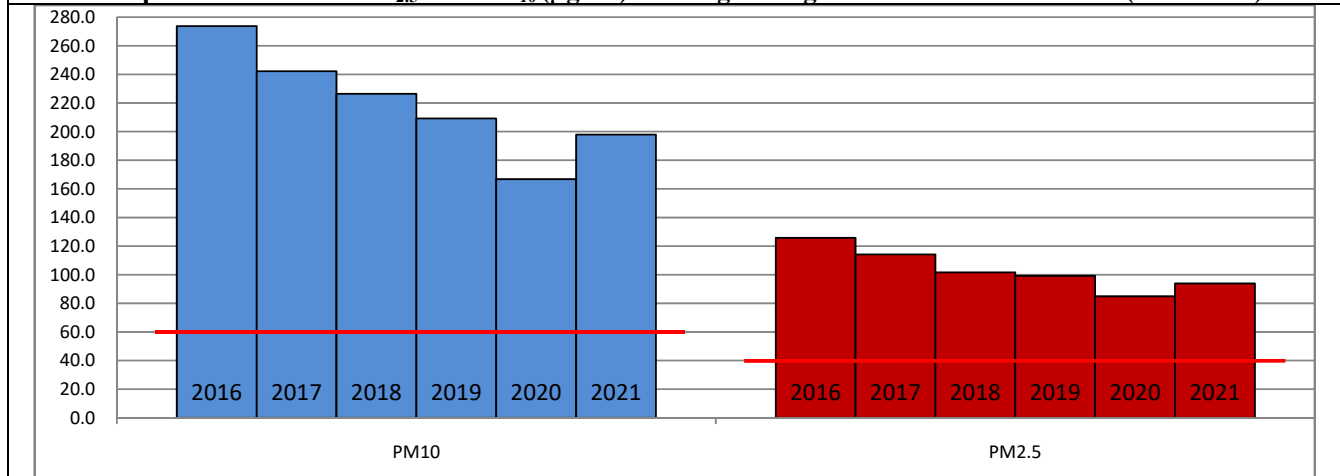
	Air Quality	AQI Value	Prominent Pollutant
Delhi	Severe	406↑	PM ₁₀ , PM _{2.5}
Faridabad	Severe	423↑	PM ₁₀ , PM _{2.5}
Ghaziabad	Very Poor	378↑	PM _{2.5}
Greater Noida	Very Poor	386↑	PM _{2.5}
Gurugram	Very Poor	379↑	PM _{2.5}
Noida	Very Poor	394↑	PM ₁₀ , PM _{2.5}

*Data available for 36 stations in Delhi today. # ↑, ↓ arrows indicate increase/decrease as compared to value on the previous day

Comparative status of AQI - Delhi from 01 January to 26 November 2016-2021

Category	Year No. of days	2016	2017	2018	2019	2020	2021	2016	2017	2018	2019	2020	2021
		319	330	330	331	332	331						
Good (0-50)		0	2	0	2	5	1						
Satisfactory (51-100)		25	45	53	58	95	72	108	150	158	175	225	197
Moderate (101-200)		83	103	105	115	125	124						
Poor (201-300)		117	105	110	97	64	71						
Very Poor (301-400)		76	67	50	43	32	48	211	180	172	156	107	134
Severe (>401)		18	8	12	16	11	15						

Comparative status of PM_{2.5} and PM₁₀ (µg/m³) running average - Delhi till November 25 (2016-2021)



* The PM values are 24 hourly averages (6 am to 6 am)

Hotspots for Today:

*Details given overleaf

Delhi	Jahangirpuri, Wazirpur, Rohini, Shadipur, Ashok Vihar	Gurugram	Teri Gram, Sector-51
Faridabad	Sector-11, New Industrial Town	Greater Noida	Knowledge Park – V
Ghaziabad	Loni, Vasundhara	Noida	Sector -62, Sector - 116

Forecast by IITM:

Parameters	November 27, 2021		November 28, 2021– November 29, 2021	
	Concentration	AQI Category	Concentration	AQI Category
PM ₁₀	478	Severe	358	Very Poor
PM _{2.5}	278	Severe	209	Very Poor

▪ **Wind Forecast for Delhi:**

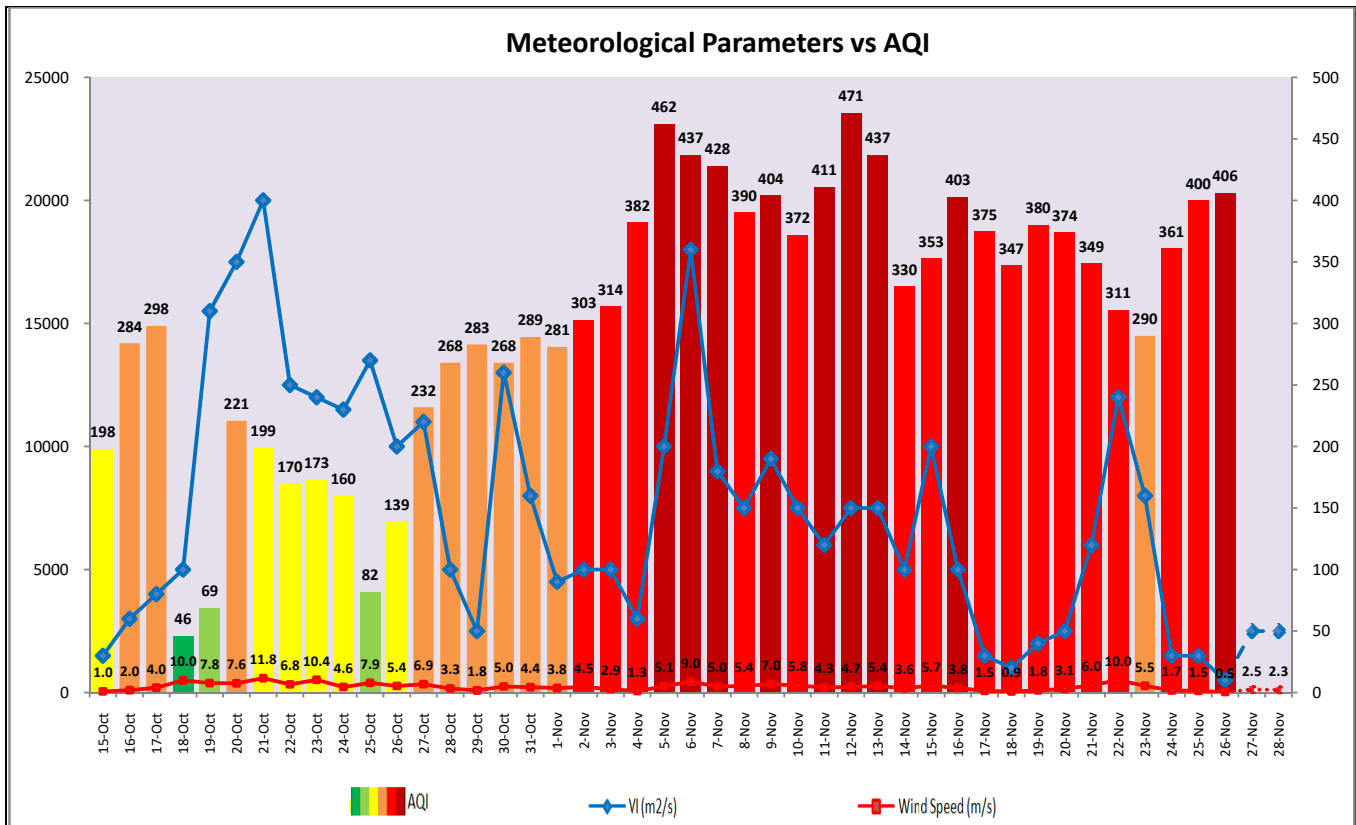
Dates	Wind speed (at surface) in km/h		Wind speed (at 900 m) in km/h	Wind Direction	
	As per IMD (at 17:30 hrs.)	As per windy.com (at 16:00 hrs.)	As per windy.com (at 16:00hrs)	As per IMD (at 17:30hrs.)	As per windy.com at 900m
November 27, 2021	06	08	14	E	SE
November 28, 2021	06	05	06	E	S
November 29, 2021	06	09	23	NNW	NW

▪ **IMD Alert for Tomorrow (26.11.2021):**

The air quality is likely improve marginally but remain in upper end of Very Poor category tomorrow as calm or slow winds during night are unfavourable for effective dispersion of pollutants. The predominant surface wind is likely to be coming from Southeast/East direction of Delhi with wind speed of 06 kmph, mainly clear sky and shallow fog in the morning. Ventilation index is likely to be 2,500 m²/s.

▪ **Active Fire Events (AFEs)**

Date	Punjab		Haryana	
	Nos. on the day	Total since September 21	Nos. on the day	Total since September 21
25.11.2021	31	71246	41	6870
25.11.2020	0	82702	1	4037



▪ Hotspots for Today

City	Station Name	AQI value	Air Quality	Prominent Pollutant
Delhi	Jahangirpuri, Delhi - DPCC	465	Severe	PM _{2.5}
	Wazirpur, Delhi - DPCC	459	Severe	PM _{2.5}
	Rohini, Delhi – DPCC	457	Severe	PM _{2.5}
	Shadipur, Delhi - CPCB	457	Severe	PM ₁₀
	Ashok Vihar, Delhi - DPCC	455	Severe	PM _{2.5}
Faridabad	Sector 11, Faridabad - HSPCB	479	Severe	PM ₁₀
	New Industrial Town, Faridabad - HSPCB	410	Severe	PM ₁₀
Gurugram	Sector-51, Gurugram - HSPCB	393	Very Poor	PM _{2.5}
	Teri Gram, Gurugram - HSPCB	380	Very Poor	PM _{2.5}
Ghaziabad	Loni, Ghaziabad - UPPCB	469	Severe	PM _{2.5}
	Vasundhara, Ghaziabad - UPPCB	365	Very Poor	PM _{2.5}
Greater Noida	Knowledge Park - V, Greater Noida - UPPCB	427	Severe	PM _{2.5}
Noida	Sector - 62, Noida - IMD	429	Severe	PM ₁₀
	Sector-116, Noida - UPPCB	404	Severe	PM _{2.5}