



Central Pollution Control Board

Air Quality Status for Delhi & NCR

Dated – October 26, 2022



Current Air Quality Status:

Air Quality Index (AQI) (Average of past 24 hours)

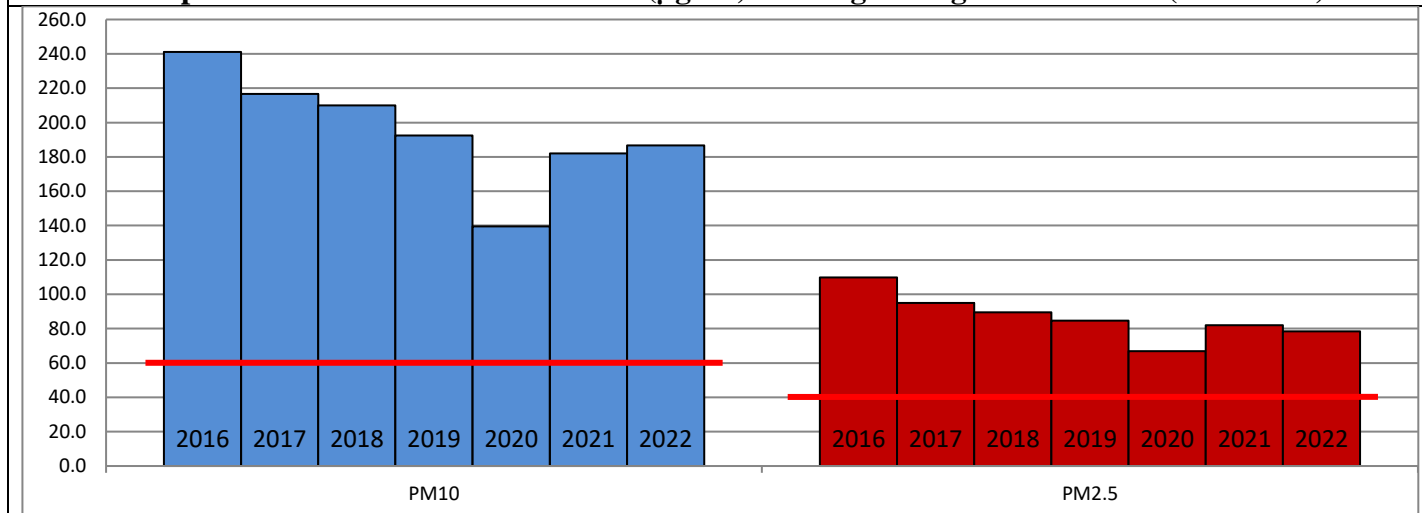
	Air Quality	AQI Value	Prominent Pollutant
Delhi	Poor	270 ↓	PM ₁₀ , PM _{2.5}
Faridabad	Poor	250 ↓	PM ₁₀ , PM _{2.5}
Ghaziabad	Poor	276 ↑	PM ₁₀ , PM _{2.5}
Greater Noida	Poor	215 ↓	PM _{2.5}
Gurugram	Poor	242 ↓	PM _{2.5}
Noida	Poor	262 ↓	PM ₁₀ , PM _{2.5}

*Data available for 33 stations in Delhi today. # ↓ ↑ arrows indicate a decrease/increase as compared to the value on the previous day.

Comparative status of AQI - Delhi from 01 January to 26 October 2016-2022

Category	Year	2016	2017	2018	2019	2020	2021	2022	2016	2017	2018	2019	2020	2021	2022
	No. of days	288	299	299	299	300	299	299							
Good (0–50)		0	2	0	2	5	1	3							
Satisfactory (51–100)		24	45	53	58	95	81	65	110	150	157	175	224	197	160
Moderate (101–200)		86	103	104	115	124	115	92							
Poor (201–300)		116	102	103	88	54	63	115							
Very Poor (301–400)		56	46	33	29	20	33	23	178	149	142	124	76	102	139
Severe (>401)		6	1	6	7	2	6	1							

Comparative status of PM₁₀ and PM_{2.5} (µg/m³) running average – Till Oct 20 (2016-2022)



Hotspots for Today:

*Details given overleaf

Delhi	Anand Vihar, Jahangirpuri, Bawana, Nehru Nagar, IHBAS-Dilshad Garden	Ghaziabad	Loni
Faridabad	Sector-16A, Sector-11	Greater Noida	Knowledge Park-V
Gurugram	Sector-51, Vikas Sadan	Noida	Sector-116, Sector - 62

Forecast by IITM (Delhi):

	Oct 27, 2022		Oct 28, 2022- Oct 29, 2022	
	Concentration	AQI Category	Concentration	AQI Category
PM ₁₀	237	Moderate	259	Poor
PM _{2.5}	121	Very Poor	132	Very Poor

Wind Forecast for Delhi:

	Wind speed (at surface) in km/h		Wind speed (at 900 m) in km/h	Wind Direction	
	As per IMD (range)	As per windy.com (at 16:00 hrs.)	As per windy.com (at 16:00hrs)	As per IMD	As per windy.com at 900m
Oct 27, 2022	08	03	15	S/E	NW
Oct 28, 2022	06-08	06	19	E	NW
Oct 29, 2022	06-08	01	09	Variable	NW

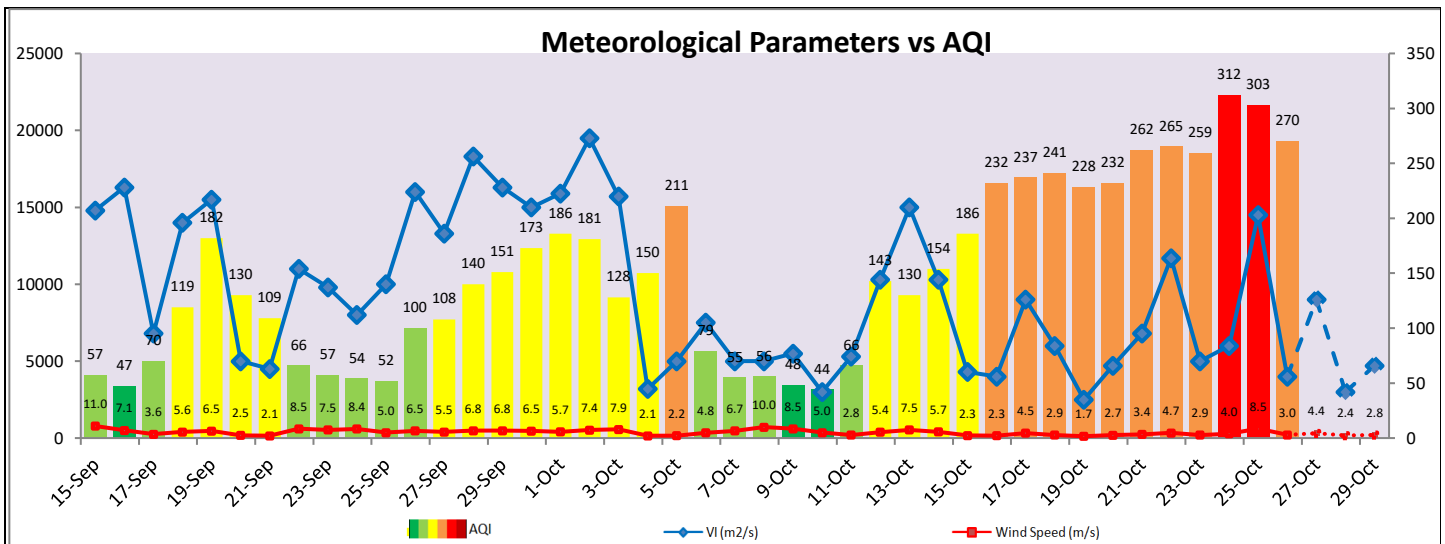
IMD Alert for Tomorrow (27.10.2022):

The air quality is likely to deteriorate marginally but remain in Poor to lower end of Very Poor category on 27.10.2022. The predominant surface wind is likely to be calm in the morning hours, coming from South/East direction in Delhi with wind speed upto 08 kmph and clear sky tomorrow. Ventilation index is likely to be 9,000 m²/s.

Active Fire Events (AFEs):

Date	Punjab		Haryana	
	Nos. on the day	Total since September 15	Nos. on the day	Total since September 15
25.10.2022	181	5798	12	1372
25.10.2021	76	6134	71	1835

* As per IITM, the impact of stubble burning is ~ 05-06%.



Hotspots for Today

City	Station Name	AQI value	Air Quality	Prominent Pollutant
Delhi	Anand Vihar, Delhi - DPCC	361	Very Poor	PM ₁₀
	Jahangirpuri, Delhi - DPCC	307	Very Poor	PM _{2.5}
	Bawana, Delhi - DPCC	299	Poor	PM _{2.5}
	Nehru Nagar, Delhi - DPCC	296	Poor	PM _{2.5}
	IHBAS, Dilshad Garden, Delhi - CPCB	293	Poor	PM _{2.5}
Faridabad	Sector 11, Faridabad - HSPCB	334	Very Poor	PM _{2.5}
	Sector- 16A, Faridabad - HSPCB	283	Poor	PM _{2.5}
Gurugram	Sector-51, Gurugram - HSPCB	308	Very Poor	PM _{2.5}
	Vikas Sadan, Gurugram - HSPCB	253	Poor	PM _{2.5}
Ghaziabad	Loni, Ghaziabad - UPPCB	351	Very Poor	PM _{2.5}
Greater Noida	Knowledge Park - V, Greater Noida - UPPCB	269	Poor	O ₃
Noida	Sector-116, Noida - UPPCB	299	Poor	PM _{2.5}
	Sector - 62, Noida - IMD	294	Poor	PM _{2.5}