



Central Pollution Control Board

Air Quality Status for Delhi & NCR

Dated – September 26, 2022



Current Air Quality Status:

Air Quality Index (AQI) (Average of past 24 hours)

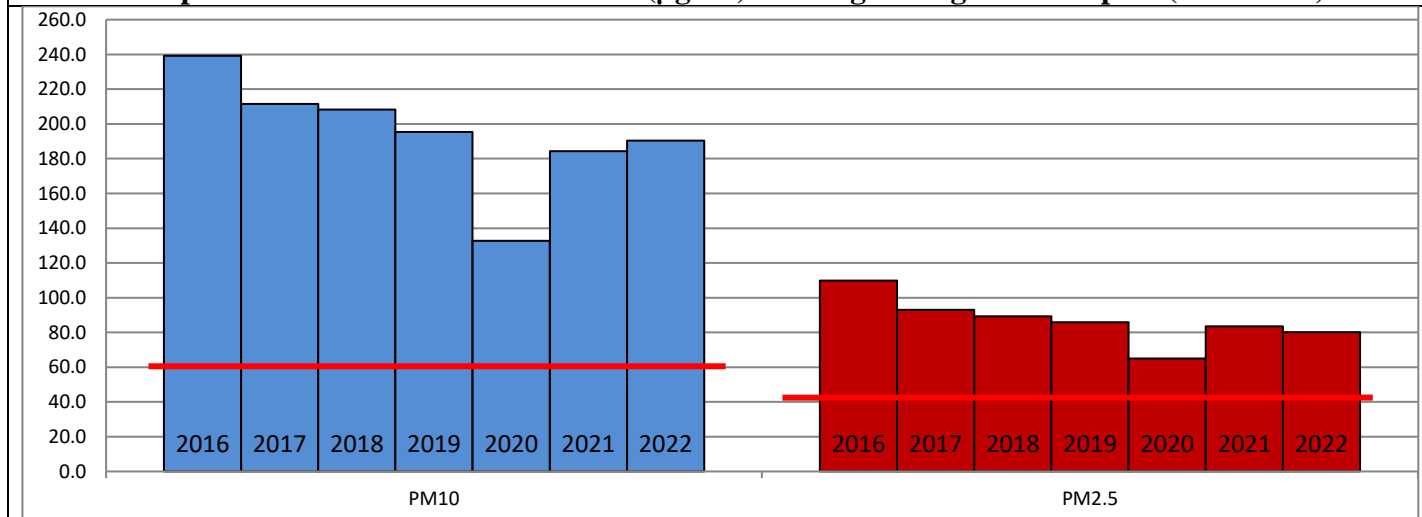
	Air Quality	AQI Value	Prominent Pollutant
Delhi	Satisfactory	100 ↓	PM _{2.5} , PM ₁₀
Faridabad	Satisfactory	98 ↓	PM ₁₀
Ghaziabad	Satisfactory	90 ↓	PM _{2.5} , PM ₁₀
Greater Noida	Satisfactory	100 ↓	PM ₁₀
Gurugram	Moderate	121 ↓	PM _{2.5} , CO
Noida	Moderate	101 ↓	PM _{2.5} , PM ₁₀

*Data available for 34 stations in Delhi today. # ↓ ↑ arrows indicate a decrease/increase as compared to the value on the previous day.

Comparative status of AQI - Delhi from 01 January to 26 September 2016-2022

Category	Year	2016	2017	2018	2019	2020	2021	2022	2016	2017	2018	2019	2020	2021	2022
	No. of days	258	269	269	269	270	269	269							
Good (0–50)		0	2	0	2	5	0	1							
Satisfactory (51–100)		24	45	53	50	95	76	61	103	144	149	161	214	170	142
Moderate (101–200)		79	97	96	109	114	94	80							
Poor (201–300)		95	89	86	74	39	60	105							
Very Poor (301–400)		54	36	28	27	15	33	21	155	125	120	108	56	99	127
Severe (>401)		6	0	6	7	2	6	1							

Comparative status of PM₁₀ and PM_{2.5} (µg/m³) running average – Till Sep 25 (2016-2022)



Hotspots for Today:

*Details given overleaf

Delhi	Anand Vihar, Punjabi bagh, Pusa, Wazirpur, ITO	Ghaziabad	Vasundhara, Indirapuram
Faridabad	New Industrial Town	Greater Noida	Knowledge Park-V
Gurugram	Sector-51	Noida	Sector-116, Sector-62

Forecast by IITM (Delhi):

Parameters	Sep 26, 2022		Sep 27, 2022- Sep 28, 2022	
	Concentration	AQI Category	Concentration	AQI Category
PM ₁₀	26	Good	43	Good
PM _{2.5}	13	Good	21	Good

Wind Forecast for Delhi:

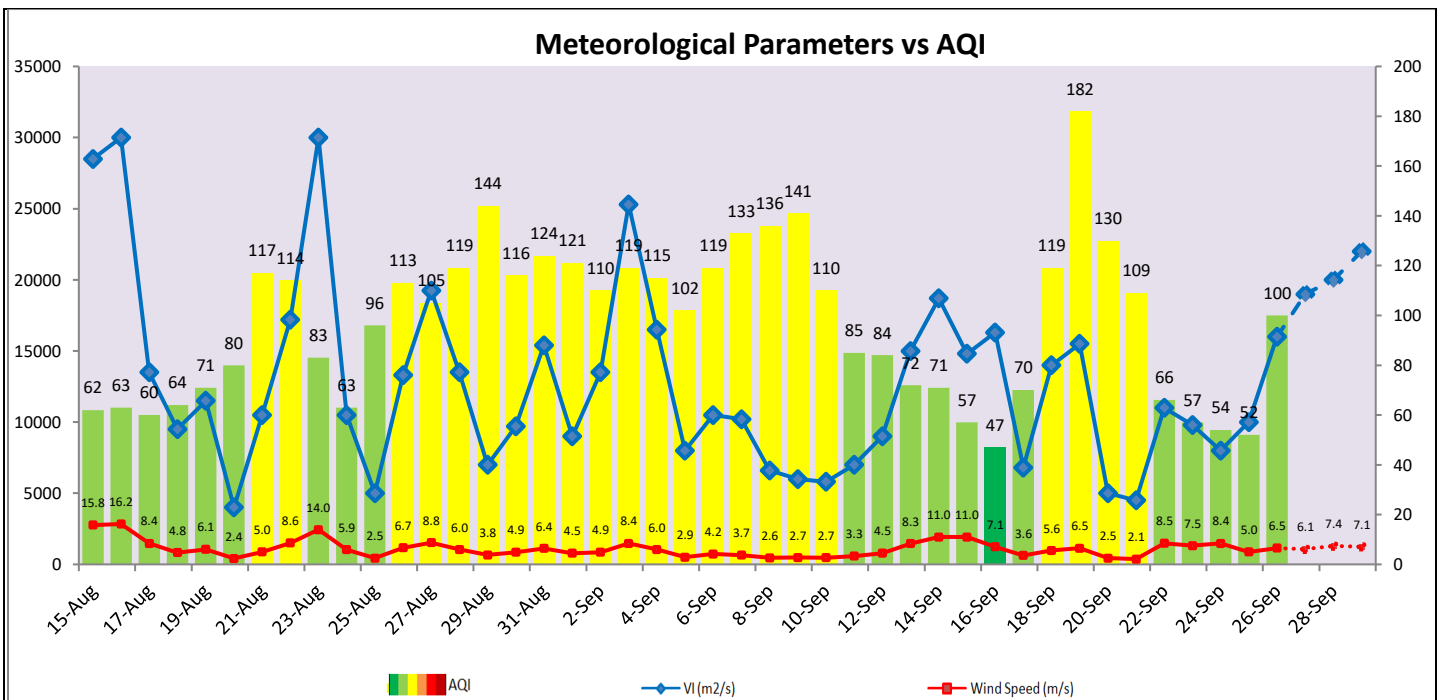
	Wind speed (at surface) in km/h		Wind speed (at 900 m) in km/h	Wind Direction	
	As per IMD (range)	As per windy.com (at 16:00 hrs.)	As per windy.com (at 16:00hrs)	As per IMD	As per windy.com at 900m
Sep 27, 2022	06-08	09	23	NW/NE	NW
Sep 28, 2022	08-16	06	21	NW	NW
Sep 29, 2022	06-16	07	21	NW	NW

IMD Alert for Tomorrow (27.09.2022):

The overall air quality over Delhi is likely to remain in Satisfactory to Moderate category on 27.09.2022. The predominant surface wind is likely to be coming from Northwest/Northeast direction in Delhi with wind speed 06-08 kmph and partly cloudy sky tomorrow. Ventilation index is likely to be 19,000m²/s.

Active Fire Events (AFE):

Date	Punjab		Haryana	
	Nos. on the day	Total since September 15	Nos. on the day	Total since September 15
24.09.2022	0	139	0	1
24.09.2021	5	29	0	0



▪ **Hotspots for Today**

City	Station Name	AQI value	Air Quality	Prominent Pollutant
Delhi	Anand Vihar, Delhi - DPCC	141	Moderate	PM ₁₀
	Punjabi Bagh, Delhi - DPCC	132	Moderate	PM _{2.5}
	Pusa, Delhi - DPCC	130	Moderate	PM ₁₀
	Wazirpur, Delhi - DPCC	129	Moderate	PM ₁₀
	ITO, Delhi - CPCB	128	Moderate	PM _{2.5}
Faridabad	New Industrial Town, Faridabad - HSPCB	106	Moderate	PM ₁₀
Gurugram	Sector-51, Gurugram - HSPCB	210	Poor	PM _{2.5}
Ghaziabad	Vasundhara, Ghaziabad - UPPCB	118	Moderate	PM ₁₀
	Indirapuram, Ghaziabad - UPPCB	106	Moderate	PM ₁₀
Greater Noida	Knowledge Park - V, Greater Noida - UPPCB	109	Moderate	PM ₁₀
Noida	Sector - 62, Noida - IMD	108	Moderate	PM _{2.5}
	Sector-116, Noida - UPPCB	108	Moderate	PM ₁₀