



# Central Pollution Control Board

## Air Quality Status for Delhi & NCR

Dated – April 26, 2023



### Current Air Quality Status:

#### Air Quality Index (AQI) (Average of past 24 hours)

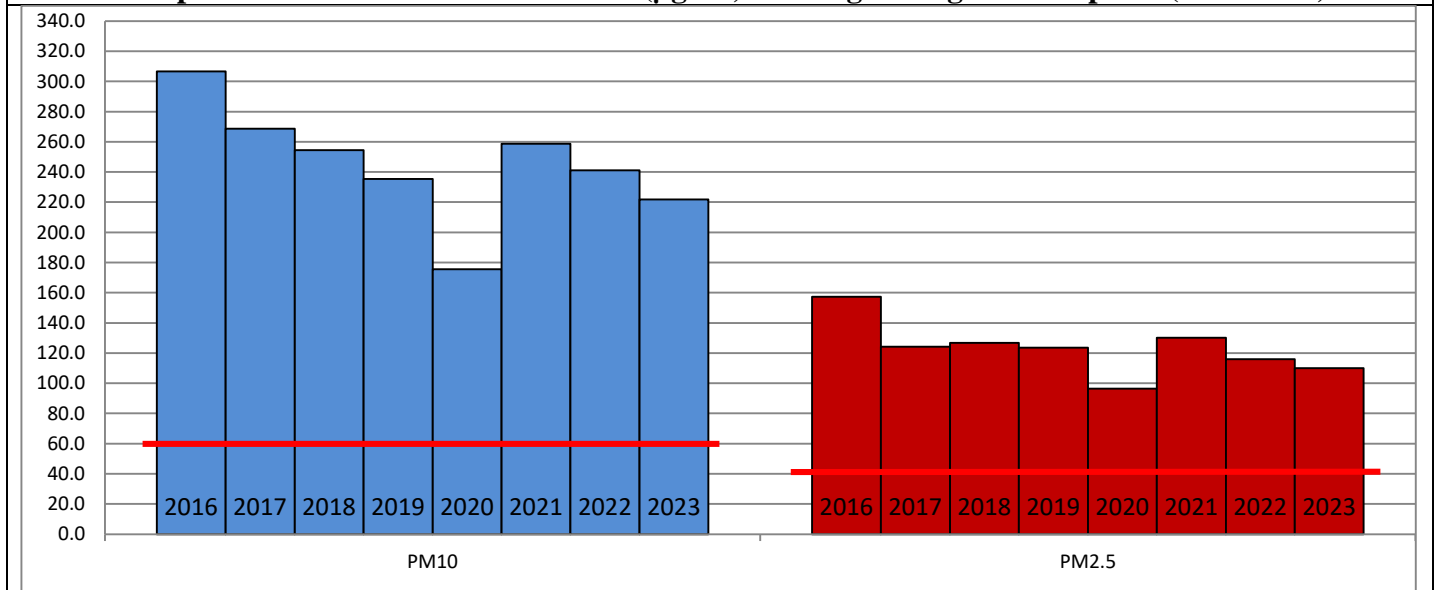
	Air Quality	AQI Value	Prominent Pollutant
Delhi	Poor	210 ↑	NO <sub>2</sub> , PM <sub>10</sub>
Faridabad	Moderate	148 ↑	PM <sub>2.5</sub>
Ghaziabad	Poor	203 ↑	PM <sub>2.5</sub> , O <sub>3</sub>
Greater Noida	Poor	230 ↑	O <sub>3</sub> , PM <sub>10</sub>
Gurugram	Poor	205 ↑	PM <sub>2.5</sub> , O <sub>3</sub>
Noida	Moderate	199 ↑	PM <sub>10</sub>

\*Data available for 38 stations in Delhi today. # ↑ ↓ arrows indicate a decrease/increase as compared to the value on the previous day.

#### Comparative status of AQI - Delhi from 01 January to 26 April 2016-2023

Category	Year	2016	2017	2018	2019	2020	2021	2022	2023	2016	2017	2018	2019	2020	2021	2022	2023
	No. of days	112	116	116	116	116	116	116	116								
Good (0–50)		0	0	0	0	1	0	0	0								
Satisfactory (51–100)		0	0	1	2	23	0	3	3	8	28	32	44	64	31	27	50
Moderate (101–200)		8	28	31	42	40	31	24	47								
Poor (201–300)		56	59	58	43	35	48	70	43								
Very Poor (301–400)		42	29	23	22	15	31	18	20	104	88	84	72	52	85	89	66
Severe (>401)		6	0	3	7	2	6	1	3								

#### Comparative status of PM<sub>10</sub> and PM<sub>2.5</sub> (µg/m<sup>3</sup>) running average – Till Apr 25 (2016-2023)



#### Hotspots for Today:

\*Details given overleaf

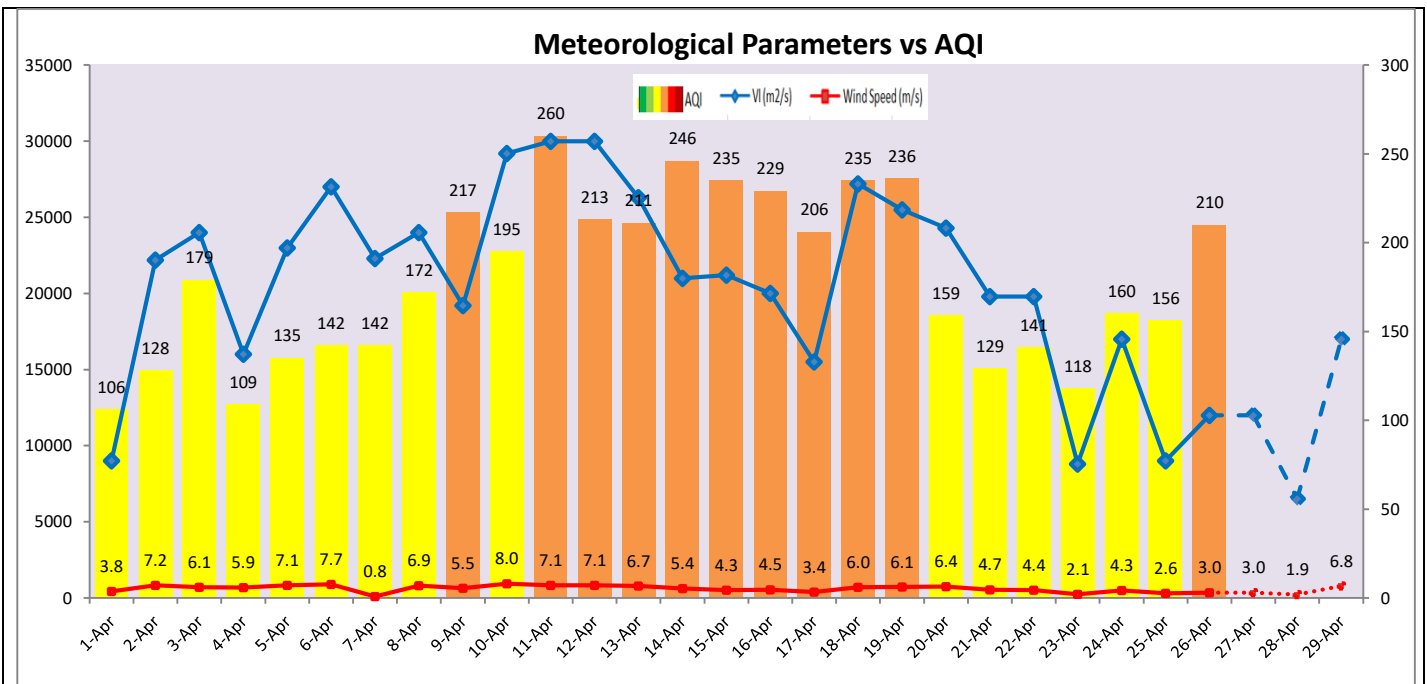
Delhi	Burari crossing, Bawana, Mundka, Alipur, NSIT Dwarka	Ghaziabad	Loni, Sanjay Nagar
Faridabad	Sector-11, Sector-30	Greater Noida	Knowledge Park-v
Gurugram	Sector-51	Noida	Sector-125

### Wind Forecast for Delhi:

	Wind speed (at surface) in km/h		Wind speed (at 900 m) in km/h	Wind Direction	
	As per IMD (range)	As per windy.com (at 16:00 hrs.)	As per windy.com (at 16:00hrs)	As per IMD	As per windy.com at 900m
Apr 27, 2023	10-22	14	15	VAR	NE
Apr 28, 2023	08-20	07	09	S	NW
Apr 29, 2023	10-22	06	07	SE	NW

### IMD Alert for Tomorrow (27.04.2023):

The air quality is likely to remain in Poor category on 27.04.2023. The predominant surface wind is likely to be coming from variable directions in Delhi with wind speed 10-22 kmph, partly cloudy sky and possibility of drizzle at one or two places tomorrow. Ventilation index is likely to be more than 12,000 m<sup>2</sup>/s.



### Hotspots for Today

City	Station Name	AQI value	Air Quality	Prominent Pollutant
Delhi	Burari Crossing, Delhi - IMD	307	Very Poor	NO <sub>2</sub>
	Bawana, Delhi - DPCC	302	Very Poor	PM <sub>10</sub>
	Mundka, Delhi - DPCC	302	Very Poor	PM <sub>10</sub>
	Alipur, Delhi - DPCC	276	Poor	O <sub>3</sub>
	NSIT Dwarka, Delhi - CPCB	267	Poor	PM <sub>2.5</sub>
Faridabad	Sector 11, Faridabad - HSPCB	198	Moderate	PM <sub>2.5</sub>
	Sector 30, Faridabad - HSPCB	187	Moderate	PM <sub>10</sub>
Gurugram	Sector-51, Gurugram - HSPCB	293	Poor	PM <sub>2.5</sub>
Ghaziabad	Loni, Ghaziabad - UPPCB	240	Poor	PM <sub>2.5</sub>
	Sanjay Nagar, Ghaziabad - UPPCB	214	Poor	O <sub>3</sub>
Greater Noida	Knowledge Park - V, Greater Noida - UPPCB	232	Poor	O <sub>3</sub>
Noida	Sector - 125, Noida - UPPCB	322	Very Poor	PM <sub>10</sub>