



Central Pollution Control Board

Air Quality Status for Delhi & NCR

Dated – January 26, 2025



Current Air Quality Status:

Air Quality Index (AQI) (Average of past 24 hours at 4 PM) in comparison with last two years

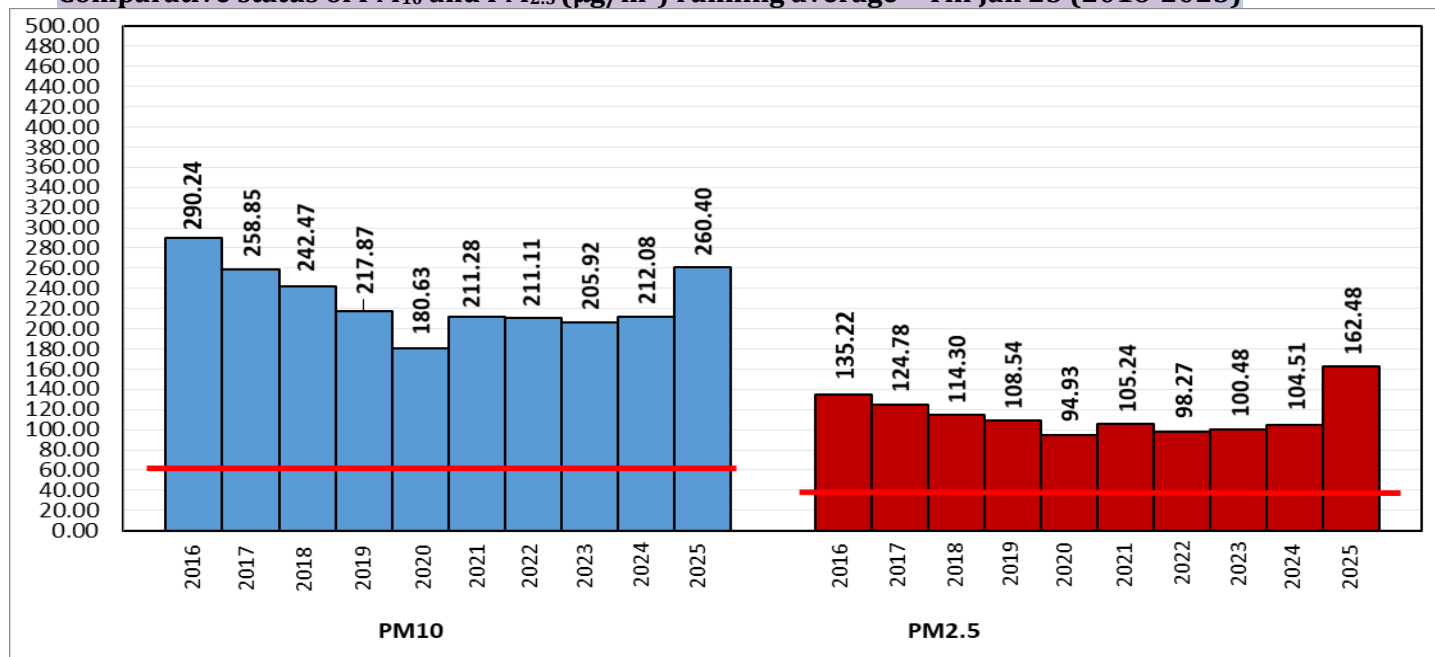
	2025			2024			2023		
	Air Quality	AQI Value	Prominent Pollutant	Air Quality	AQI Value	Prominent Pollutant	Air Quality	AQI Value	Prominent Pollutant
Delhi	Poor	216↑	PM _{2.5}	Severe	409↑	PM _{2.5}	Poor	298↑	PM _{2.5}
Faridabad	Moderate	159↑	PM _{2.5}	Very Poor	303↓	PM _{2.5}	Very Poor	320↑	PM _{2.5}
Ghaziabad	Moderate	120↑	PM _{2.5}	Very Poor	375↑	PM ₁₀ , PM _{2.5}	Poor	238↑	PM ₁₀ , PM _{2.5}
Greater Noida	Moderate	118↑	PM ₁₀	Very Poor	371↓	PM _{2.5}	Very Poor	304↑	PM _{2.5}
Gurugram	Moderate	182↑	PM _{2.5}	Very Poor	325↑	PM _{2.5}	Poor	254↑	PM _{2.5}
Noida	Moderate	170↑	O ₃	Very Poor	394↑	PM ₁₀ , PM _{2.5}	Poor	283↑	PM _{2.5}

*Data available for 27(2025), 38(2024), 39(2023) stations in Delhi today. # ↑, ↓ arrows indicate a decrease/increase as compared to the value on the previous day.

Comparative status of AQI - Delhi from 01 January to 26 Jan 2016-2025

Category	Year	2016	2017	2018	2019	2020	2021	2022	2023	2024	2025	2016	2017	2018	2019	2020	2021	2022	2023	2024	2025
	No. of days	26	26	26	26	26	26	26	26	26	26	26	26	26	26	26	26	26	26	26	26
Good (0-50)		0	0	0	0	0	0	0	0	0	0	0	0	0	0	0	0	0	0	0	0
Satisfactory (51-100)		0	0	0	0	0	0	2	0	0	0	0	0	0	2	1	2	5	1	0	2
Moderate (101-200)		0	0	0	2	1	2	3	1	0	2	0	0	0	0	0	0	0	0	0	0
Poor (201-300)		2	7	7	6	14	8	8	8	1	11	26	26	26	24	25	24	21	25	26	24
Very Poor (301-400)		19	19	16	11	9	10	12	14	22	13	26	26	26	24	25	24	21	25	26	24
Severe (>401)		5	0	3	7	2	6	1	3	3	0	26	26	26	24	25	24	21	25	26	24

Comparative status of PM₁₀ and PM_{2.5} (µg/m³) running average - Till Jan 25 (2016-2025)



*Red line shows the annual average concentration standards for PM₁₀ and PM_{2.5}.

Daily Average of Particulates in Delhi (24 hourly average value; from 06:00am of 25.01.25 to 06:00 am of 26.01.25)

Date ↓ / parameter →	PM _{2.5} (µg/m ³)	PM ₁₀ (µg/m ³)
25-Jan-2025	88↓	186↑

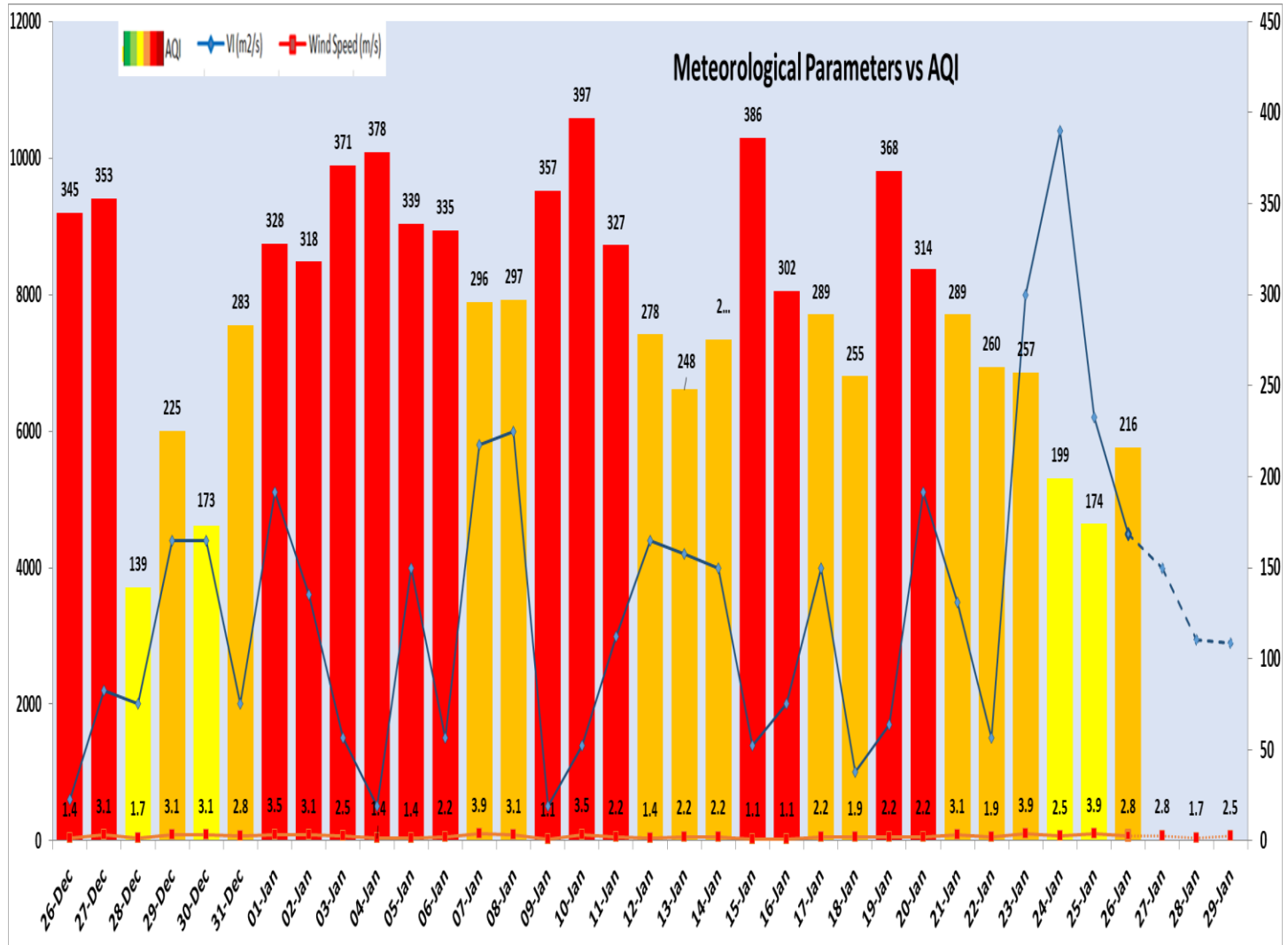
Hotspots for Today:		*Details given below	
Delhi	Bawana, Wazirpur, Jahangirpuri, Alipur, Rohini	Ghaziabad	Loni , Indirapuram
Faridabad	Sector 11	Greater Noida	Knowledge Park – V
Gurugram	Teri Gram	Noida	Sector-116

Forecast by IITM(Delhi):			
	Jan 27, 2025	Jan 28, 2025	Jan 29, 2025
AQI Category	Poor	Poor	Very Poor

Wind Forecast for Delhi:					
	Wind speed (at surface) in km/h		Wind speed (at 900 m) in km/h	Wind Direction	
	As per IMD (range)	As per windy.com (at 16:00 hrs.)	As per windy.com (at 16:00hrs)	As per IMD	As per windy.com at 900m
Jan 27, 2025	06-14	07	39	NW	NW
Jan 28, 2025	06-08	04	21	VAR	NW
Jan 29, 2025	04-14	10	32	SE	S

IMD Alert for Tomorrow (27.01.2025):

The air quality is likely to be in Poor category from 27.01.2025 to 28.01.2025. The predominant surface wind is likely to be from the northwest direction with a wind speed less than 06 kmph during morning hours. Mist is likely during morning hours. The wind speed will gradually increase thereafter becoming 10-12 kmph from northwest direction during afternoon. It will decrease becoming less than 06 kmph from northwest direction during evening and night. Smog/mist is likely in the evening/night and mainly clear sky on 27.01.2025. Ventilation index is likely to be 4000 m²/s.



Delhi Temperature (°C)*		
Date	Minimum	Maximum
23-01-2025	11.0	25.6
24-01-2025	9.8	24.8
25-01-2025	8.6	24.6
26-01-2025	7.2	24.8

* Source – IMD (08:30 hrs.)

*Hotspots for Today				
City	Station Name	AQI value	Air Quality	Prominent Pollutant
Delhi	Bawana, Delhi - DPCC	288	Poor	PM _{2.5}
	Wazirpur, Delhi - DPCC	276	Poor	PM _{2.5}
	Jahangirpuri, Delhi - DPCC	264	Poor	PM _{2.5}
	Alipur, Delhi - DPCC	262	Poor	PM _{2.5}
	Rohini, Delhi - DPCC	259	Poor	PM _{2.5}
Faridabad	Sector 11, Faridabad - HSPCB	159	Moderate	PM _{2.5}
Gurugram	Teri Gram, Gurugram - HSPCB	231	Poor	PM _{2.5}
Ghaziabad	Loni, Ghaziabad - UPPCB	141	Moderate	PM _{2.5}
	Indirapuram, Ghaziabad - UPPCB	129	Moderate	PM _{2.5}
Greater Noida	Knowledge Park - V, Greater Noida - UPPCB	118	Moderate	PM ₁₀
Noida	Sector-116, Noida - UPPCB	170	Moderate	Ozone