



Central Pollution Control Board

Air Quality Status for Delhi & NCR

Dated – January 26, 2022



Current Air Quality Status:

Air Quality Index (AQI) (Average of past 24 hours)

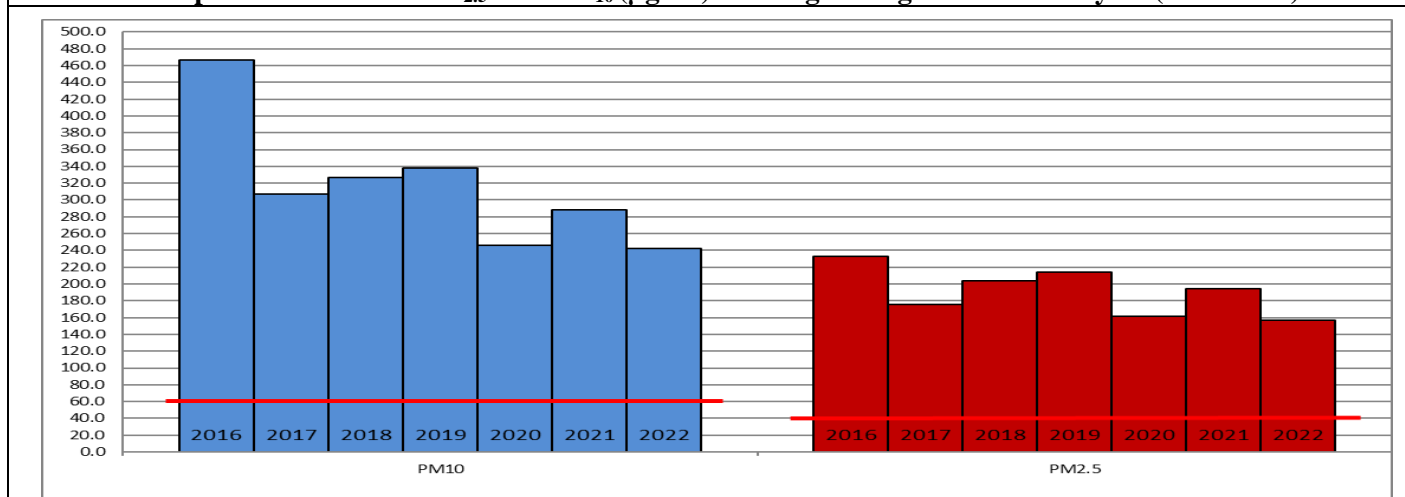
	Air Quality	AQI Value	Prominent Pollutant
Delhi	Poor	260 ↓	PM ₁₀ , PM _{2.5}
Faridabad	Poor	248 ↓	PM ₁₀ , PM _{2.5}
Ghaziabad	Poor	247 ↑	PM _{2.5}
Greater Noida	Poor	206 ↓	PM _{2.5}
Gurugram	Poor	236 ↓	PM _{2.5}
Noida	Poor	218 ↓	PM _{2.5}

*Data available for 34 stations in Delhi today. # ↓ ↑ arrows indicate increase/decrease as compared to value on the previous day

Comparative status of AQI - Delhi from 01 January to 26 January 2016-2022

Category	Year	2016	2017	2018	2019	2020	2021	2022	2016	2017	2018	2019	2020	2021	2022
	No. of days	26	26	26	26	26	26	26	26	26	26	26	26	26	26
Good (0–50)		0	0	0	0	0	0	0							
Satisfactory (51–100)		0	0	0	0	0	0	2	0	0	0	2	1	2	5
Moderate (101–200)		0	0	0	2	1	2	3							
Poor (201–300)		2	7	7	6	14	8	8							
Very Poor (301–400)		19	19	16	11	9	10	12	26	26	26	24	25	24	21
Severe (>401)		5	0	3	7	2	6	1							

Comparative status of PM_{2.5} and PM₁₀ (µg/m³) running average – Till January 25 (2016-2022)



Hotspots for Today:

*Details given overleaf

Delhi	Anand Vihar, Jahangirpuri, Nehru Nagar, Wazirpur, Punjabi Bagh	Gurugram	Sector-51, Teri Gram
Faridabad	Sector-30, New Industrial Town	Greater Noida	Knowledge Park – V
Ghaziabad	Vasundhara, Sanjay Nagar	Noida	Sector -62, Sector - 1

Forecast by IITM:

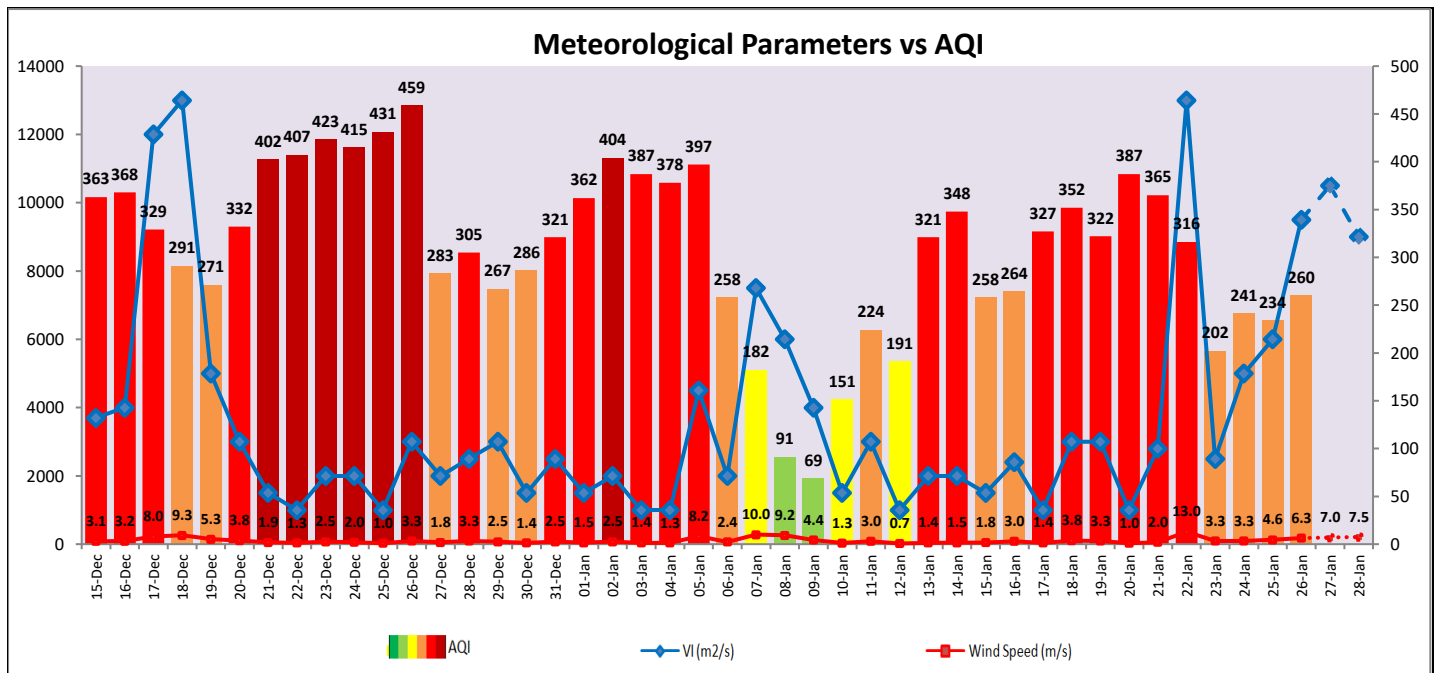
Parameters	January 27, 2022		January 28, 2022-January 29, 2022	
	Concentration	AQI Category	Concentration	AQI Category
PM ₁₀	238	Moderate	278	Poor
PM _{2.5}	128	Very Poor	149	Very Poor

▪ **Wind Forecast for Delhi:**

	Wind speed (at surface) in km/h		Wind speed (at 900 m) in km/h	Wind Direction	
	As per IMD (at 17:30 hrs.)	As per windy.com (at 16:00 hrs.)	As per windy.com (at 16:00hrs)	As per IMD (at 17:30hrs.)	As per windy.com at 900m
January 27, 2022	08	10	29	NW	NW
January 25, 2022	08	09	33	W	NW
January 28, 2022	06	08	32	W	W

▪ **IMD Alert for Tomorrow (27.01.2022):**

The air quality over Delhi-NCT is likely to improve marginally but remain in Poor category on 26.01.2022, 27.01.2022 and 28.01.2022. The predominant surface wind is likely to be coming from Northwest direction of Delhi having wind speed 08-12 kmph with mainly clear sky, shallow fog in the morning and cold day conditions at isolated places tomorrow. Ventilation index is likely to be 10,500 m²/s.



▪ **Hotspots for Today**

City	Station Name	AQI value	Air Quality	Prominent Pollutant
Delhi	Anand Vihar, Delhi - DPCC	411	Severe	PM ₁₀
	Jahangirpuri, Delhi - DPCC	374	Very Poor	PM _{2.5}
	Wazirpur, Delhi - DPCC	332	Very Poor	PM _{2.5}
	Nehru Nagar, Delhi - DPCC	312	Very Poor	PM _{2.5}
	Punjabi Bagh, Delhi - DPCC	305	Very Poor	PM _{2.5}
Faridabad	New Industrial Town, Faridabad - HSPCB	327	Very Poor	PM _{2.5}
	Sector 30, Faridabad - HSPCB	256	Poor	PM _{2.5}
Gurugram	Teri Gram, Gurugram - HSPCB	294	Poor	PM _{2.5}
	Sector-51, Gurugram - HSPCB	279	Poor	PM _{2.5}
Ghaziabad	Sanjay Nagar, Ghaziabad - UPPCB	286	Poor	PM _{2.5}
	Vasundhara, Ghaziabad - UPPCB	248	Poor	PM _{2.5}
Greater Noida	Knowledge Park - V, Greater Noida - UPPCB	220	Poor	PM _{2.5}
Noida	Sector - 62, Noida - IMD	242	Poor	PM _{2.5}
	Sector-1, Noida - UPPCB	240	Poor	PM _{2.5}