



Central Pollution Control Board

Air Quality Status for Delhi & NCR

Dated – December 25, 2022



Current Air Quality Status:

Air Quality Index (AQI) (Average of past 24 hours)

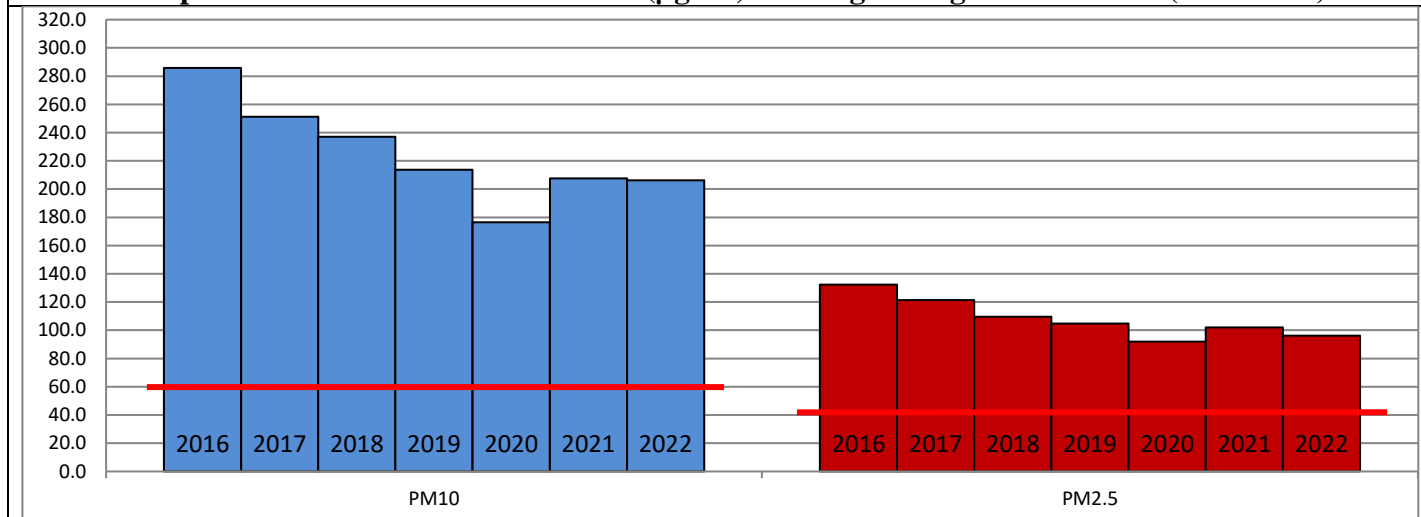
	Air Quality	AQI Value	Prominent Pollutant
Delhi	Very Poor	308 ↓	PM ₁₀ , PM _{2.5}
Faridabad	Poor	263 ↓	PM _{2.5}
Ghaziabad	Poor	256 ↓	PM _{2.5}
Greater Noida	Poor	300 ↓	PM _{2.5}
Gurugram	Poor	257 ↓	PM _{2.5}
Noida	Poor	270 ↓	PM ₁₀ , PM _{2.5}

*Data available for 38 stations in Delhi today. # ↓ ↑ arrows indicate a decrease/increase as compared to the value on the previous day.

Comparative status of AQI - Delhi from 01 January to 25 December 2016-2022

Category	Year	2016	2017	2018	2019	2020	2021	2022	2016	2017	2018	2019	2020	2021	2022
	No. of days	348	359	359	359	360	359	359							
Good (0-50)		0	2	0	2	5	1	3							
Satisfactory (51-100)		24	45	53	59	95	81	65	110	152	159	182	227	197	163
Moderate (101-200)		86	105	106	121	127	115	95							
Poor (201-300)		120	115	114	103	72	77	130							
Very Poor (301-400)		94	83	68	53	46	62	60	238	207	200	177	133	162	196
Severe (>401)		24	9	18	21	15	23	6							

Comparative status of PM₁₀ and PM_{2.5} (µg/m³) running average – Till Dec 22 (2016-2022)



Hotspots for Today:

*Details given overleaf

Delhi	NSIT Dwarka, Jahangirpuri, Mundka, Wazirpur, Nehru Nagar	Ghaziabad	Vasundhara
Faridabad	Sector-16A	Greater Noida	Knowledge Park -III
Gurugram	Sector-51, Teri Gram	Noida	Sector-62, Sector-116

Forecast by IITM (Delhi):

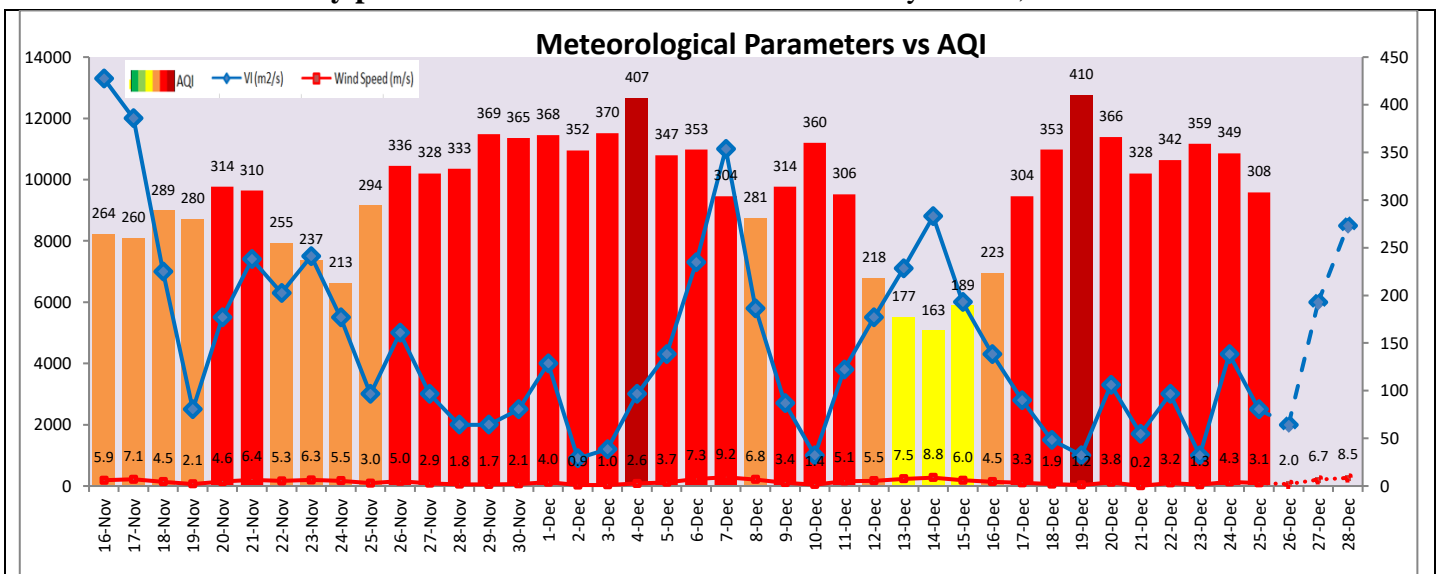
	Dec 26, 2022		Dec 27, 2022- Dec 28, 2022	
	Concentration	AQI Category	Concentration	AQI Category
PM ₁₀	280	Poor	302	Poor
PM _{2.5}	170	Very Poor	180	Very Poor

Wind Forecast for Delhi:

	Wind speed (at surface) in km/h		Wind speed (at 900 m) in km/h	Wind Direction	
	As per IMD (range)	As per windy.com (at 16:00 hrs.)	As per windy.com (at 16:00hrs)	As per IMD	As per windy.com at 900m
Dec 26, 2022	Upto 04	12	08	CALM/WNW	NW
Dec 27, 2022	08-15	14	35	WNW	NW
Dec 28, 2022	12-18	14	51	NW	NW

IMD Alert for Tomorrow (26.12.2022):

The air quality is likely to deteriorate marginally but remain in Very Poor category 26.12.2022. The predominant surface wind is likely to be calm during day time and coming from West-Northwest direction in Delhi with wind speed upto 04 kmph during evening hours, mainly clear sky, **moderate to dense fog in the morning and cold wave conditions at many places** tomorrow. Ventilation index is likely to be 2,000 m²/s.



Hotspots for Today

City	Station Name	AQI value	Air Quality	Prominent Pollutant
Delhi	NSIT Dwarka, Delhi - CPCB	384	Very Poor	PM ₁₀
	Jahangirpuri, Delhi - DPCC	352	Very Poor	PM _{2.5}
	Mundka, Delhi - DPCC	348	Very Poor	PM _{2.5}
	Wazirpur, Delhi - DPCC	343	Very Poor	PM _{2.5}
	Nehru Nagar, Delhi - DPCC	339	Very Poor	PM _{2.5}
Faridabad	Sector- 16A, Faridabad - HSPCB	313	Very Poor	PM _{2.5}
Gurugram	Sector-51, Gurugram - HSPCB	286	Poor	PM _{2.5}
	Teri Gram, Gurugram - HSPCB	261	Poor	PM _{2.5}
Ghaziabad	Vasundhara, Ghaziabad - UPPCB	309	Very Poor	PM _{2.5}
Greater Noida	Knowledge Park - III, Greater Noida - UPPCB	301	Very Poor	PM _{2.5}
Noida	Sector - 62, Noida - IMD	321	Very Poor	PM _{2.5}
	Sector-116, Noida - UPPCB	306	Very Poor	PM _{2.5}