



Central Pollution Control Board

Air Quality Status for Delhi & NCR

Dated – November 25, 2022



Current Air Quality Status:

Air Quality Index (AQI) (Average of past 24 hours)

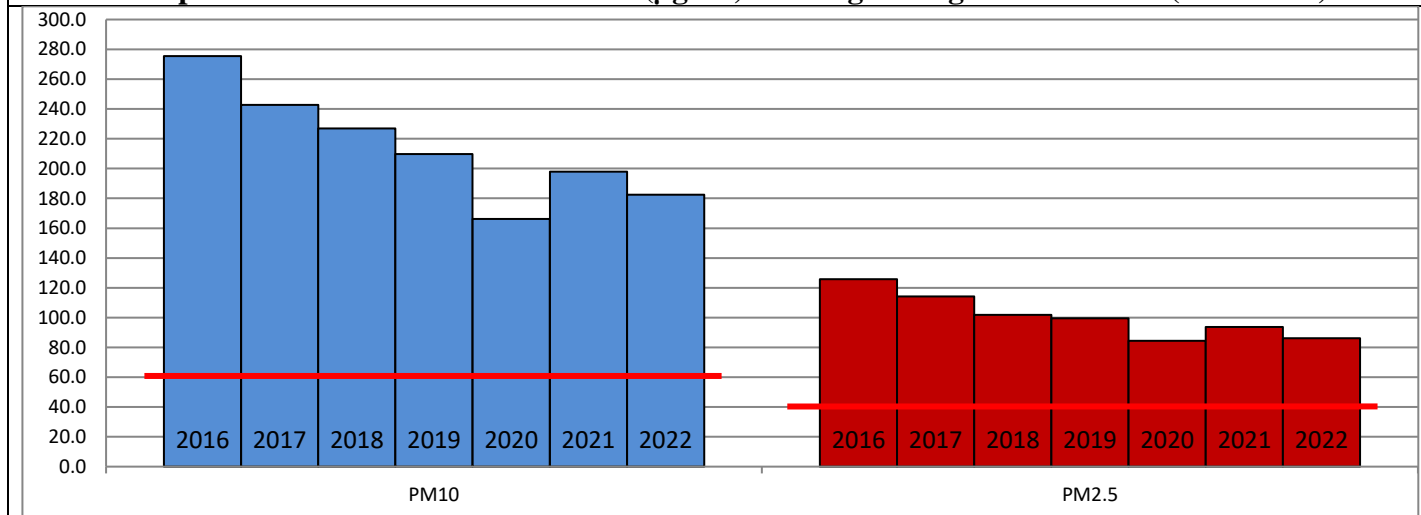
	Air Quality	AQI Value	Prominent Pollutant
Delhi	Poor	294 ↑	PM ₁₀
Faridabad	Very Poor	323 ↑	PM ₁₀ , PM _{2.5}
Ghaziabad	Very Poor	302 ↑	PM ₁₀
Greater Noida	Very Poor	332 ↑	PM ₁₀ , PM _{2.5}
Gurugram	Poor	254 ↑	PM _{2.5}
Noida	Poor	259 ↑	PM _{2.5}

*Data available for 36 stations in Delhi today. # ↑ ↓ arrows indicate a decrease/increase as compared to the value on the previous day.

Comparative status of AQI - Delhi from 01 January to 25 November 2016-2022

Category	Year	2016	2017	2018	2019	2020	2021	2022	2016	2017	2018	2019	2020	2021	2022
	No. of days	318	329	329	329	330	329	329							
Good (0–50)		0	2	0	2	5	1	3							
Satisfactory (51–100)		24	45	53	58	95	81	65	110	150	158	175	225	197	160
Moderate (101–200)		86	103	105	115	125	115	92							
Poor (201–300)		116	105	110	95	63	70	127							
Very Poor (301–400)		74	66	49	43	31	48	38	208	179	171	154	105	132	169
Severe (>401)		18	8	12	16	11	14	4							

Comparative status of PM₁₀ and PM_{2.5} (µg/m³) running average – Till Nov 24 (2016-2022)



Hotspots for Today:

*Details given overleaf

Delhi	Anand Vihar, Jahangirpuri, Alipur, Sonia Vihar, Vivek Vihar	Ghaziabad	Vasundhara
Faridabad	Sector- 11, New Industrial Town	Greater Noida	Knowledge Park-V
Gurugram	Sector-51, Teri Gram	Noida	Sector – 62, Sector-116

Forecast by IITM (Delhi):

	Nov 26, 2022		Nov 27, 2022- Nov 28, 2022	
	Concentration	AQI Category	Concentration	AQI Category
PM ₁₀	251	Poor	273	Poor
PM _{2.5}	133	Very Poor	145	Very Poor

Wind Forecast for Delhi:

	Wind speed (at surface) in km/h		Wind speed (at 900 m) in km/h	Wind Direction	
	As per IMD (range)	As per windy.com (at 16:00 hrs.)	As per windy.com (at 16:00hrs)	As per IMD	As per windy.com at 900m
Nov 26, 2022	06-12	09	35	NW	NW
Nov 27, 2022	04-06	11	19	NW	NW
Nov 28, 2022	Upto 04	07	10	NNW/NE	NW

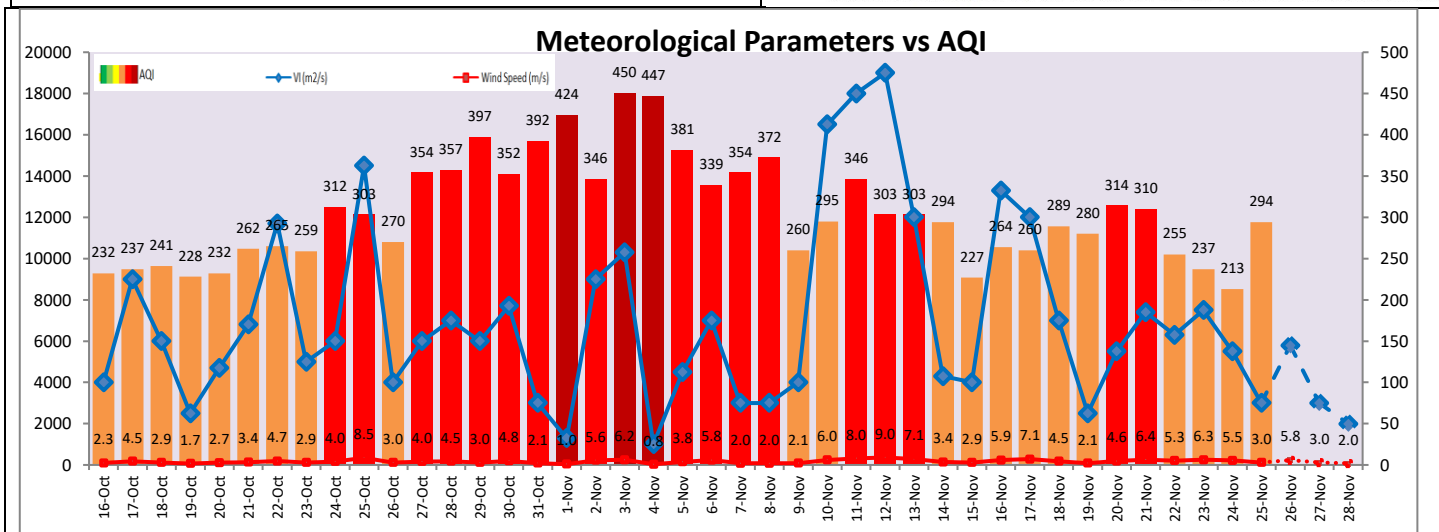
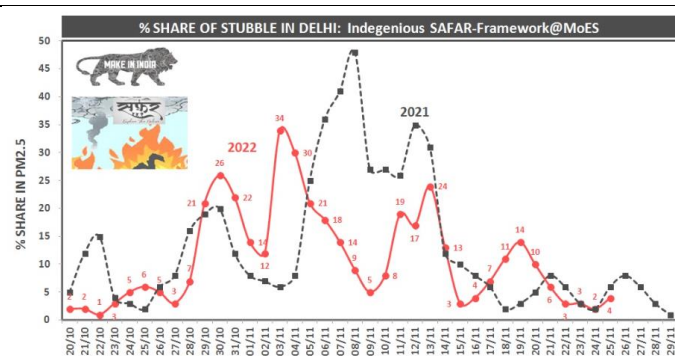
IMD Alert for Tomorrow (26.11.2022):

The overall air quality over Delhi is likely to remain in lower end of Very Poor category on 26.11.2022. The predominant surface wind is likely to be coming from Northwest direction in Delhi with wind speed 06-12 kmph, partly cloudy sky and haze tomorrow. Ventilation index is likely to be 5,800 m²/s.

Active Fire Events (AFE):

Date	Punjab		Haryana	
	Nos. on the day	Total since September 15	Nos. on the day	Total since September 15
24.11.2022	66	49810	32	3581
24.11.2021	34	71215	37	6829

* As per IITM, the contribution of stubble burning to PM_{2.5} in Delhi is ~04%.



Hotspots for Today

City	Station Name	AQI value	Air Quality	Prominent Pollutant
Delhi	Anand Vihar, Delhi - DPCC	381	Very Poor	PM ₁₀
	Jahangirpuri, Delhi - DPCC	368	Very Poor	PM ₁₀
	Alipur, Delhi - DPCC	352	Very Poor	PM ₁₀
	Sonia Vihar, Delhi - DPCC	340	Very Poor	PM ₁₀
	Vivek Vihar, Delhi - DPCC	333	Very Poor	PM _{2.5}
Faridabad	New Industrial Town, Faridabad - HSPCB	365	Very Poor	PM ₁₀
	Sector 11, Faridabad - HSPCB	329	Very Poor	PM _{2.5}
Gurugram	Sector-51, Gurugram - HSPCB	342	Very Poor	PM _{2.5}
	Teri Gram, Gurugram - HSPCB	260	Poor	PM _{2.5}
Ghaziabad	Vasundhara, Ghaziabad - UPPCB	363	Very Poor	PM ₁₀
Greater Noida	Knowledge Park - V, Greater Noida - UPPCB	376	Very Poor	PM ₁₀
Noida	Sector - 62, Noida - IMD	345	Very Poor	PM _{2.5}
	Sector-116, Noida - UPPCB	284	Poor	PM _{2.5}