



Central Pollution Control Board

Air Quality Status for Delhi &NCR

Dated – November 25, 2021



Current Air Quality Status:

Air Quality Index (AQI) (Average of past 24 hours)

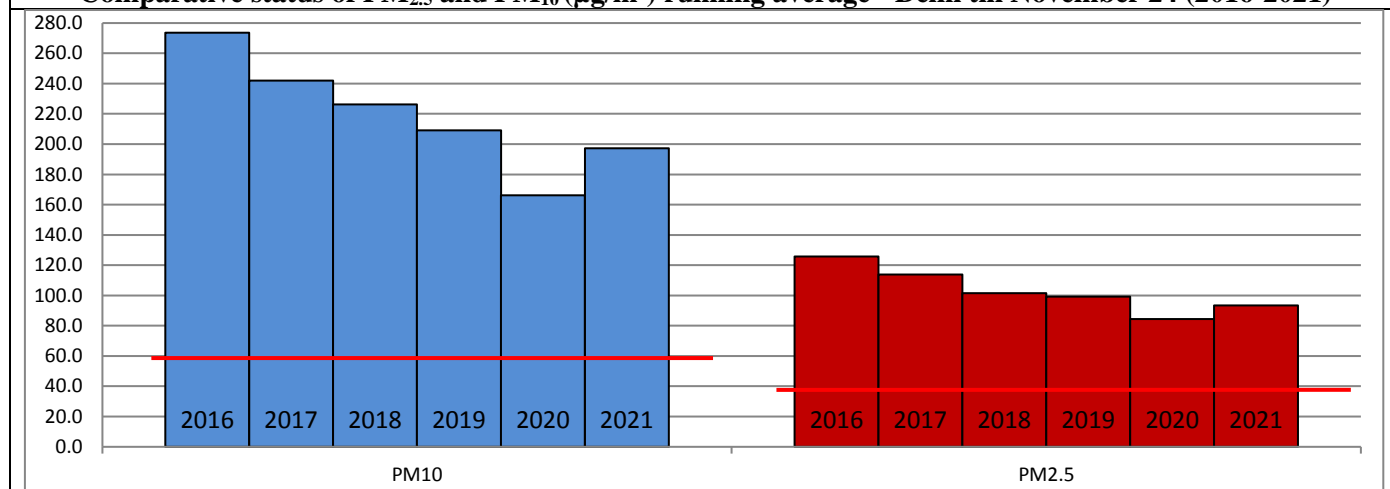
	Air Quality	AQI Value	Prominent Pollutant
Delhi	Very Poor	400↑	PM ₁₀ , PM _{2.5}
Faridabad	Severe	406↓	PM ₁₀ , PM _{2.5}
Ghaziabad	Very Poor	356↓	PM _{2.5}
Greater Noida	Very Poor	323↑	PM _{2.5}
Gurugram	Very Poor	334↑	PM _{2.5}
Noida	Very Poor	345↑	PM ₁₀ , PM _{2.5}

*Data available for 37 stations in Delhi today. # ↓, ↑ arrows indicate increase/decrease as compared to value on the previous day

Comparative status of AQI - Delhi from 01 January to 25 November 2016-2021

Category	Year No. of days	2016	2017	2018	2019	2020	2021	2016	2017	2018	2019	2020	2021
		318	329	329	329	330	329						
Good (0-50)		0	2	0	2	5	1						
Satisfactory (51-100)		25	45	53	58	95	72	108	150	158	175	225	197
Moderate (101-200)		83	103	105	115	125	124						
Poor (201-300)		116	105	110	95	63	70						
Very Poor (301-400)		76	66	49	43	31	48	210	179	171	154	105	132
Severe (>401)		18	8	12	16	11	14						

Comparative status of PM_{2.5} and PM₁₀ (µg/m³) running average - Delhi till November 24 (2016-2021)



* The PM values are 24 hourly averages (6 am to 6 am)

Hotspots for Today:

*Details given overleaf

Delhi	Jahangirpuri, Narela, Vivek Vihar, Rohini, Anand Vihar	Gurugram	Teri Gram, Sector-51
Faridabad	Sector-11, New Industrial Town	Greater Noida	Knowledge Park – V
Ghaziabad	Loni, Vasundhara	Noida	Sector -62, Sector - 116

Forecast by IITM:

Parameters	November 26, 2021		November 27, 2021– November 28, 2021	
	Concentration	AQI Category	Concentration	AQI Category
PM ₁₀	402	Very Poor	439	Severe
PM _{2.5}	229	Very Poor	249	Very Poor

▪ **Wind Forecast for Delhi:**

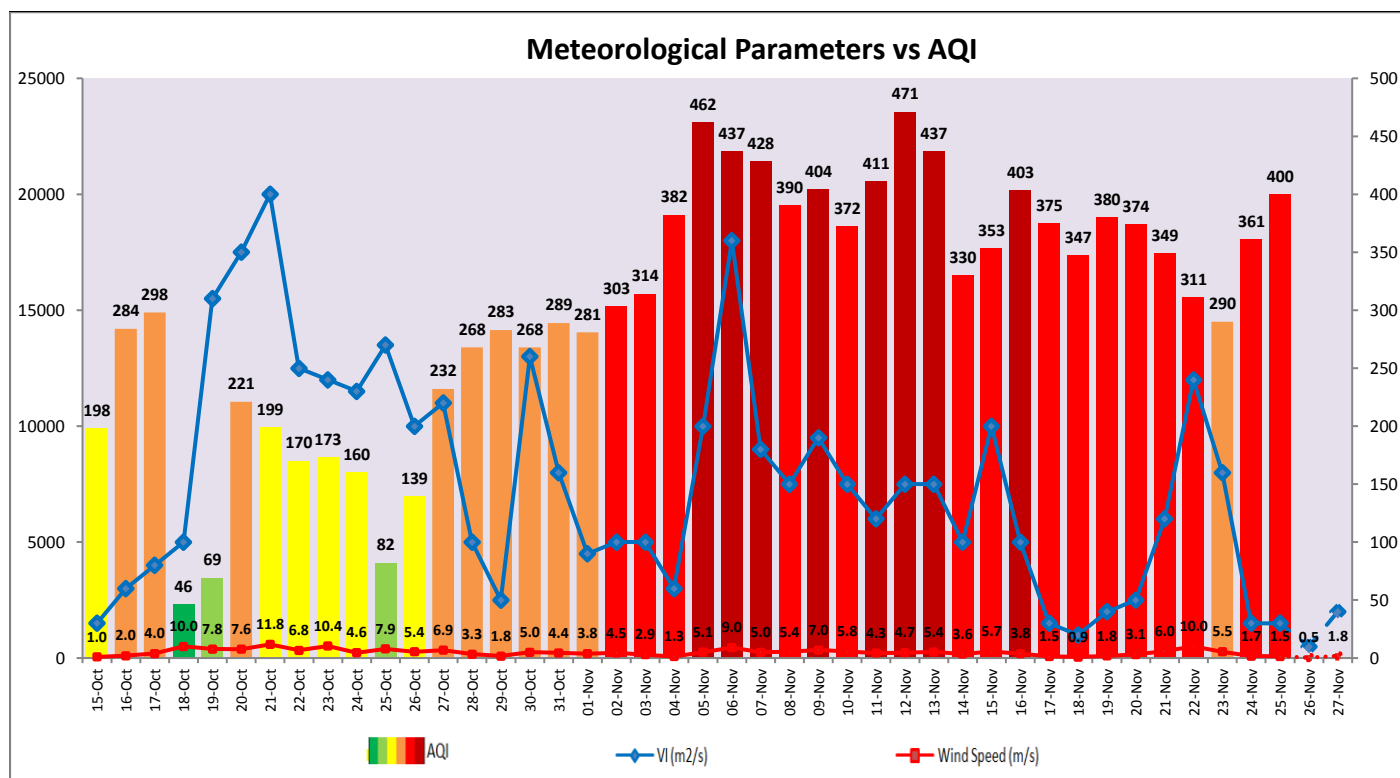
Dates	Wind speed (at surface) in km/h		Wind speed (at 900 m) in km/h	Wind Direction	
	As per IMD (at 17:30 hrs.)	As per windy.com (at 16:00 hrs.)	As per windy.com (at 16:00hrs)	As per IMD (at 17:30hrs.)	As per windy.com at 900m
November 26, 2021	06	05	04	E	SW
November 27, 2021	06	08	12	ESE	SE
November 28, 2021	08	07	07	NW	SE

▪ **IMD Alert for Tomorrow (26.11.2021):**

The air quality is likely to be in upper end of Very Poor category tomorrow as calm or slow winds on 25th and 26th are unfavourable for effective dispersion of pollutants. The predominant surface wind is likely to remain calm during morning hours, coming from Southeast/East direction with wind speed 06-08 kmph, mainly clear sky and shallow fog in the morning. Ventilation index is likely to be 500 m²/s.

▪ **Active Fire Events (AFE)**

Date	Punjab		Haryana	
	Nos. on the day	Total since September 21	Nos. on the day	Total since September 21
23.11.2021	34	71215	37	6829
23.11.2020	9	82702	20	4036



▪ **Hotspots for Today**

City	Station Name	AQI value	Air Quality	Prominent Pollutant
Delhi	Jahangirpuri, Delhi - DPCC	454	Severe	PM _{2.5}
	Narela, Delhi – DPCC	452	Severe	PM _{2.5}
	Vivek Vihar, Delhi – DPCC	450	Severe	PM _{2.5}
	Rohini, Delhi – DPCC	448	Severe	PM _{2.5}
	Anand Vihar, Delhi – DPCC	440	Severe	PM ₁₀
Faridabad	Sector 11, Faridabad - HSPCB	452	Severe	PM ₁₀
	New Industrial Town, Faridabad - HSPCB	408	Severe	PM _{2.5}
Gurugram	Teri Gram, Gurugram - HSPCB	335	Very Poor	PM _{2.5}
	Sector-51, Gurugram - HSPCB	333	Very Poor	PM _{2.5}
Ghaziabad	Loni, Ghaziabad - UPPCB	450	Severe	PM _{2.5}
	Vasundhara, Ghaziabad - UPPCB	340	Very Poor	PM _{2.5}
Greater Noida	Knowledge Park - V, Greater Noida - UPPCB	326	Very Poor	PM _{2.5}
Noida	Sector - 62, Noida - IMD	409	Severe	PM ₁₀
	Sector-116, Noida - UPPCB	329	Very Poor	PM _{2.5}