



Central Pollution Control Board

Air Quality Status for Delhi & NCR

Dated – August 25, 2022



Current Air Quality Status:

Air Quality Index (AQI) (Average of past 24 hours)

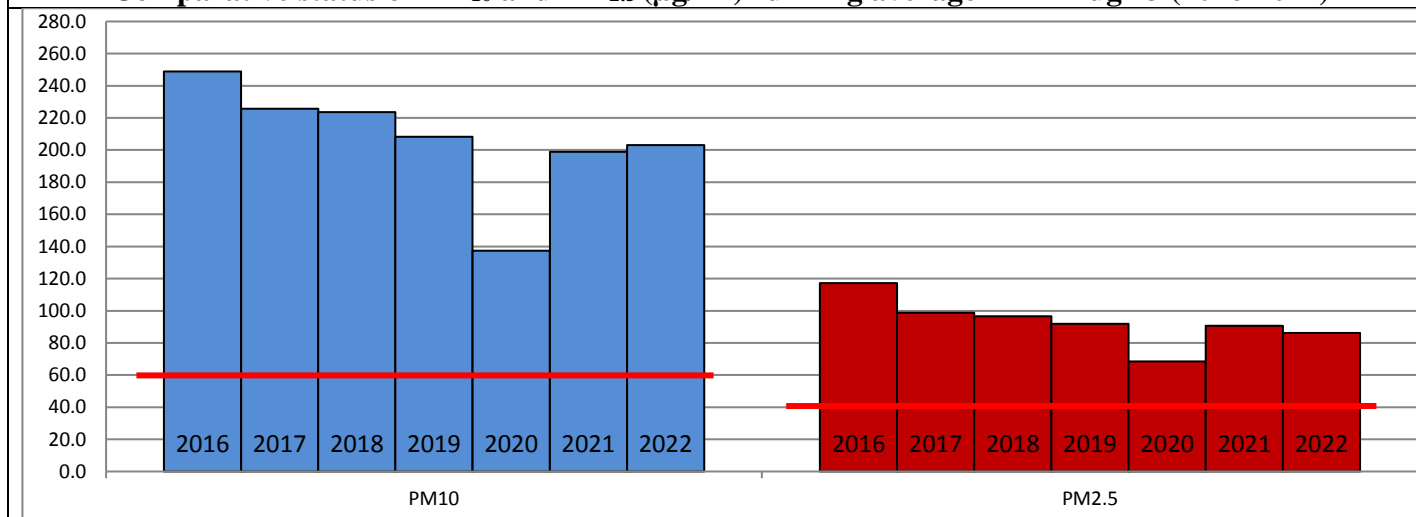
	Air Quality	AQI Value	Prominent Pollutant
Delhi	Satisfactory	96 ↓	CO, O ₃ , PM ₁₀
Faridabad	Moderate	130 ↓	O ₃ , PM ₁₀
Ghaziabad	Satisfactory	80 ↓	PM ₁₀
Greater Noida	Satisfactory	70 ↓	PM ₁₀
Gurugram	Satisfactory	84 ↓	PM ₁₀
Noida	Satisfactory	77 ↓	PM ₁₀

*Data available for 34 stations in Delhi today. # ↓ ↑ arrows indicate a decrease/increase as compared to the value on the previous day.

Comparative status of AQI - Delhi from 01 January to 25 August 2016-2022

Category	Year	2016	2017	2018	2019	2020	2021	2022	2016	2017	2018	2019	2020	2021	2022
	No. of days	226	237	237	237	238	237	237							
Good (0–50)		0	2	0	2	4	0	0							
Satisfactory (51–100)		18	32	35	33	82	51	50	75	112	117	129	182	138	110
Moderate (101–200)		57	78	82	94	96	87	60							
Poor (201–300)		91	89	86	74	39	60	105							
Very Poor (301–400)		54	36	28	27	15	33	21	151	125	120	108	56	99	127
Severe (>401)		6	0	6	7	2	6	1							

Comparative status of PM₁₀ and PM_{2.5} (µg/m³) running average – Till Aug 23 (2016-2022)



Hotspots for Today:

*Details given overleaf

Delhi	Patparganj, Sonia Vihar, R K Puram, Nehru Nagar, Anand Vihar	Ghaziabad	Sector-51, Vasundhara
Faridabad	Sector- 16A	Greater Noida	Knowledge Park - V
Gurugram	Teri Gram, Sector-51	Noida	Sector - 125

Forecast by IITM (Delhi):

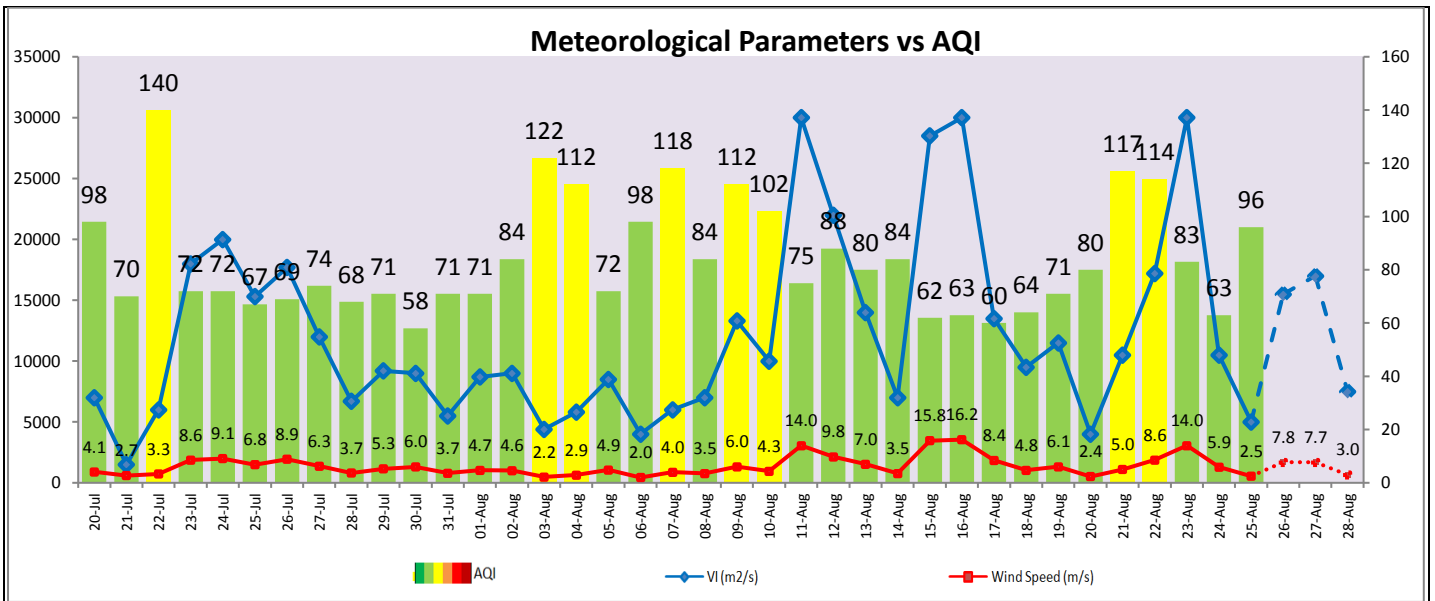
Parameters	Aug 26, 2022		Aug 27, 2022- Aug 28, 2022	
	Concentration	AQI Category	Concentration	AQI Category
PM ₁₀	73	Satisfactory	87	Satisfactory
PM _{2.5}	27	Good	32	Good

■ **Wind Forecast for Delhi:**

	Wind speed (at surface) in km/h		Wind speed (at 900 m) in km/h	Wind Direction	
	As per IMD (range)	As per windy.com (at 16:00 hrs.)	As per windy.com (at 16:00hrs)	As per IMD	As per windy.com at 900m
Aug 26, 2022	16-30	13	34	NW	W
Aug 27, 2022	32-35	17	33	NW	W
Aug 28, 2022	08-16	11	17	NW/W	W

■ **IMD Alert for Tomorrow (26.08.2022):**

The air quality is likely to deteriorate but remain in Satisfactory to Moderate category on 26.08.2022. The predominant surface wind is likely to be coming from Northwest direction in Delhi with wind speed 16-30 kmph and partly cloudy sky and strong surface wind (speed 20-30Kmph) tomorrow. Ventilation index is likely to be 15,500 m²/s.



■ **Hotspots for Today**

City	Station Name	AQI value	Air Quality	Prominent Pollutant
Delhi	Patparganj, Delhi - DPCC	222	Poor	O ₃
	Sonia Vihar, Delhi - DPCC	163	Moderate	PM ₁₀
	R K Puram, Delhi - DPCC	158	Moderate	O ₃
	Nehru Nagar, Delhi - DPCC	150	Moderate	PM ₁₀
	Anand Vihar, Delhi - DPCC	125	Moderate	PM ₁₀
Faridabad	Sector- 16A, Faridabad - HSPCB	259	Poor	O ₃
Gurugram	Teri Gram, Gurugram - HSPCB	103	Moderate	PM ₁₀
	Sector-51, Gurugram - HSPCB	93	Satisfactory	PM ₁₀
Ghaziabad	Loni, Ghaziabad - UPPCB	88	Satisfactory	PM ₁₀
	Vasundhara, Ghaziabad - UPPCB	81	Satisfactory	PM ₁₀
Greater Noida	Knowledge Park - V, Greater Noida - UPPCB	77	Satisfactory	PM ₁₀
Noida	Sector - 125, Noida - UPPCB	82	Satisfactory	PM ₁₀