



Central Pollution Control Board

Air Quality Status for Delhi & NCR

Dated – May 25, 2022



Current Air Quality Status:

Air Quality Index (AQI) (Average of past 24 hours)

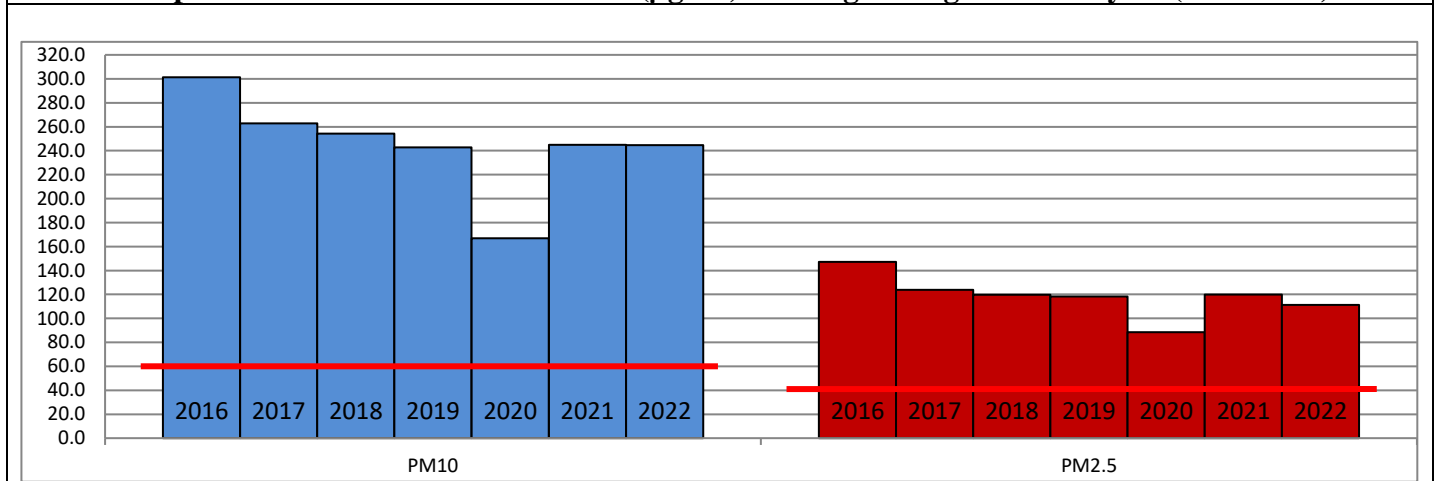
	Air Quality	AQI Value	Prominent Pollutant
Delhi	Moderate	166 ↑	O ₃ , PM _{2.5} , PM ₁₀
Faridabad	Moderate	154 ↑	PM ₁₀
Ghaziabad	Moderate	178 ↑	O ₃ , PM _{2.5} , PM ₁₀
Greater Noida	Moderate	172 ↑	PM ₁₀
Gurugram	Moderate	158 ↑	PM _{2.5} , PM ₁₀
Noida	Moderate	190 ↑	O ₃ , PM _{2.5} , PM ₁₀

*Data available for 31 stations in Delhi today. # ↓, ↑ arrows indicate a decrease/increase as compared to value on the previous day.

Comparative status of AQI - Delhi from 01 January to 25 May 2016-2022

Category	Year	2016	2017	2018	2019	2020	2021	2022	2016	2017	2018	2019	2020	2021	2022
	No. of days	142	145	145	145	146	145	145							
Good (0–50)		0	0	0	0	1	0	0							
Satisfactory (51–100)		0	0	1	2	27	5	4	14	32	44	55	92	53	36
Moderate (101–200)		14	32	43	53	64	48	32							
Poor (201–300)		73	77	71	57	37	54	90							
Very Poor (301–400)		49	36	27	26	15	32	18	128	113	101	90	54	92	109
Severe (>401)		6	0	3	7	2	6	1							

Comparative status of PM_{2.5} and PM₁₀ (µg/m³) running average – Till May 24 (2016-2022)



Hotspots for Today:

*Details given overleaf

Delhi	Mundka, Patparganj, Chandni Chowk, RK Puram, NSIT Dwarka	Gurugram	Sector-51, NISE Gwal Pahari
Faridabad	-	Greater Noida	-
Ghaziabad	Loni, Vasundhara	Noida	Sector-1, Sector-116

Forecast by IITM (Delhi):

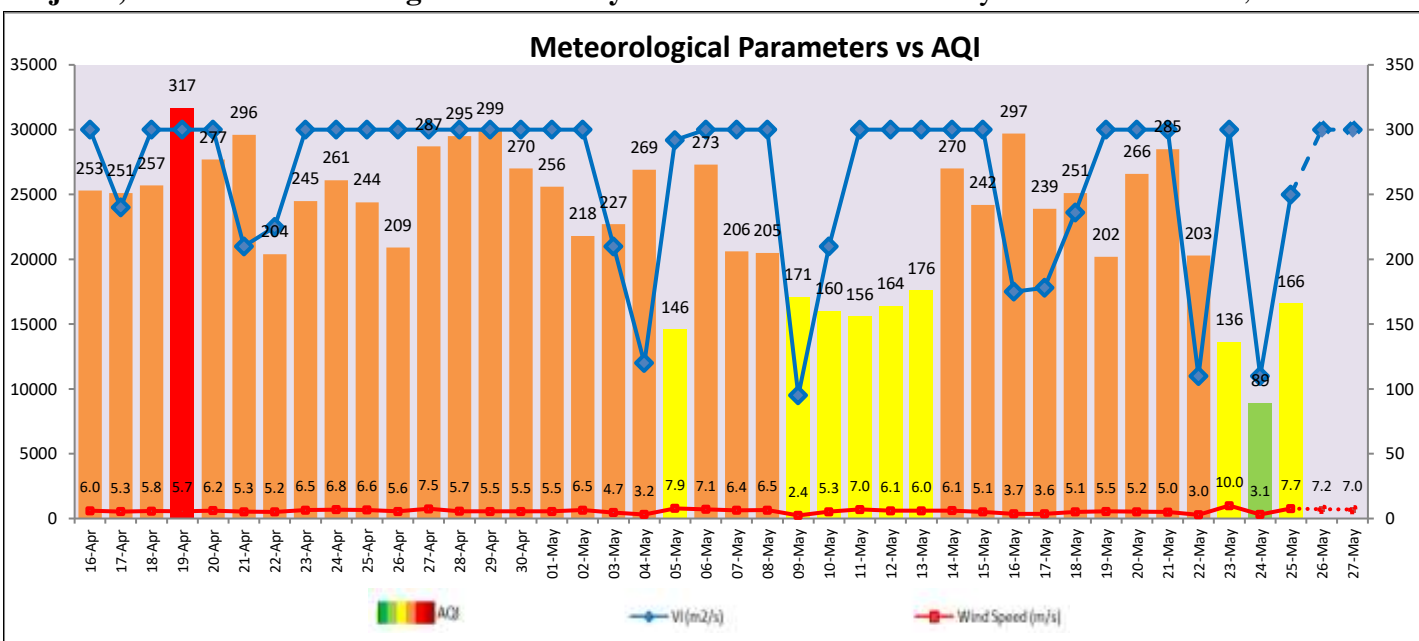
Parameters	May 26, 2022		May 27, 2022- May 28, 2022	
	Concentration	AQI Category	Concentration	AQI Category
PM ₁₀	153	Moderate	184	Moderate
PM _{2.5}	70	Moderate	84	Moderate

Wind Forecast for Delhi:

	Wind speed (at surface) in km/h		Wind speed (at 900 m) in km/h	Wind Direction	
	As per IMD (at 17:30 hrs.)	As per windy.com (at 16:00 hrs.)	As per windy.com (at 16:00hrs)	As per IMD (at 17:30hrs.)	As per windy.com at 900m
May 26, 2022	10	08	14	NW	NW
May 27, 2022	12	12	34	WSW	W
May 28, 2022	18	07	13	WSW	W

IMD Alert for Tomorrow (26.05.2022):

The air quality is likely to remain in Moderate to Poor category on 26.05.2022. The predominant surface wind is likely to be coming from Southwest/Northwest direction of Delhi with wind speed 08-15 kmph, and partly cloudy sky tomorrow. **Long range transported dust will also impact air quality over parts of Rajasthan, Gujarat, MP and NCR during next three days.** Ventilation index is likely to be more than 30,000 m²/s.



Hotspots for Today

City	Station Name	AQI value	Air Quality	Prominent Pollutant
Delhi	Patparganj, Delhi - DPCC	268	Poor	O ₃
	Chandni Chowk, Delhi - IITM	258	Poor	PM ₁₀
	R K Puram, Delhi - DPCC	234	Poor	O ₃
	Mundka, Delhi - DPCC	226	Poor	O ₃
	NSIT Dwarka, Delhi - CPCB	206	Poor	PM _{2.5}
Faridabad	New Industrial Town, Faridabad - HSPCB	180	Moderate	PM ₁₀
	Sector 30, Faridabad - HSPCB	165	Moderate	PM ₁₀
Gurugram	Sector-51, Gurugram - HSPCB	173	Moderate	PM _{2.5}
	NISE Gwal Pahari, Gurugram - IMD	172	Moderate	PM ₁₀
Ghaziabad	Loni, Ghaziabad - UPPCB	246	Poor	PM _{2.5}
	Vasundhara, Ghaziabad - UPPCB	176	Moderate	PM ₁₀
Noida	Sector-1, Noida - UPPCB	269	Poor	O ₃
	Sector-116, Noida - UPPCB	171	Moderate	PM _{2.5}