



Central Pollution Control Board

Air Quality Status for Delhi &NCR

Dated – March 25, 2022



Current Air Quality Status:

Air Quality Index (AQI) (Average of past 24 hours)

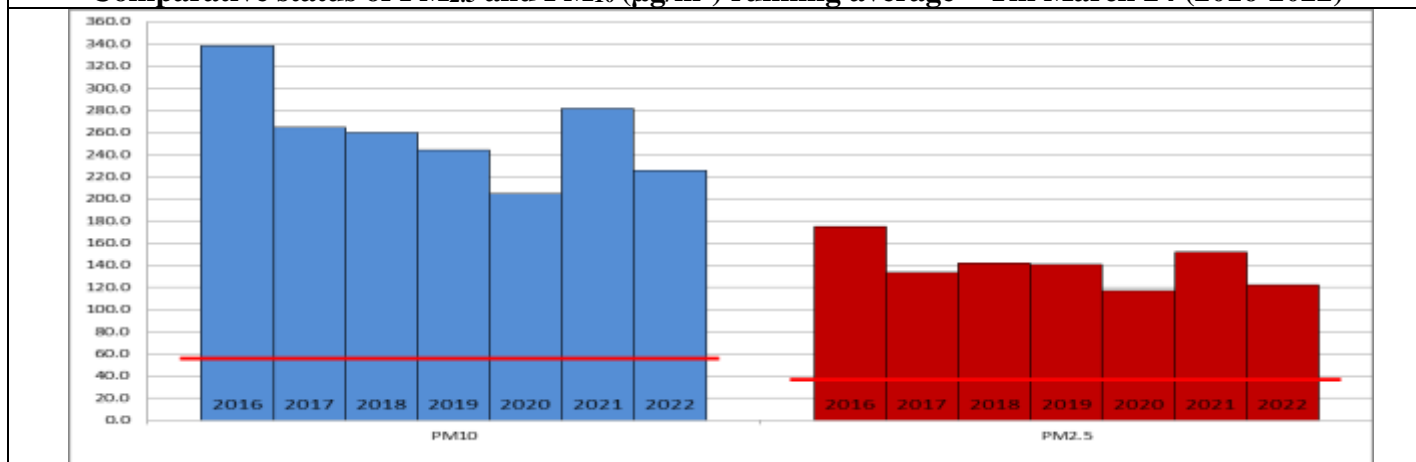
	Air Quality	AQI Value	Prominent Pollutant
Delhi	Poor	211↓	PM _{2.5} , PM ₁₀
Faridabad	Moderate	193↓	PM _{2.5} , PM ₁₀
Ghaziabad	Poor	269↓	PM ₁₀
Greater Noida	Poor	246↓	PM ₁₀
Gurugram	Poor	248↑	PM _{2.5}
Noida	Moderate	190↓	PM ₁₀

*Data available for 38 stations in Delhi today. # ↓ ↑ arrows indicate increase/decrease as compared to value on the previous day

Comparative status of AQI - Delhi from 01 January to 25 March 2016-2022

Category	Year	2016	2017	2018	2019	2020	2021	2022	2016	2017	2018	2019	2020	2021	2022
		No. of days													
Good (0–50)		81	84	84	84	85	84	84							
Satisfactory (51–100)		0	0	0	1	6	0	3	6	13	23	29	33	11	26
Moderate (101–200)		6	13	23	28	27	11	23							
Poor (201–300)		27	47	37	27	35	36	40							
Very Poor (301–400)		42	24	21	21	15	31	17	75	71	61	55	52	73	58
Severe (>401)		6	0	3	7	2	6	1							

Comparative status of PM_{2.5} and PM₁₀ (µg/m³) running average – Till March 24 (2016-2022)



Hotspots for Today:

*Details given overleaf

Delhi	NSIT Dwarka, Mundka, Bawana ITO, Dwarka-Sector-8	Gurugram	Sector-51, Teri Gram
Faridabad	Sector-11, New Industrial Town	Greater Noida	Knowledge Park - II
Ghaziabad	Loni, Sanjay Nagar	Noida	Sector-1, Sector-62

Forecast by IITM:

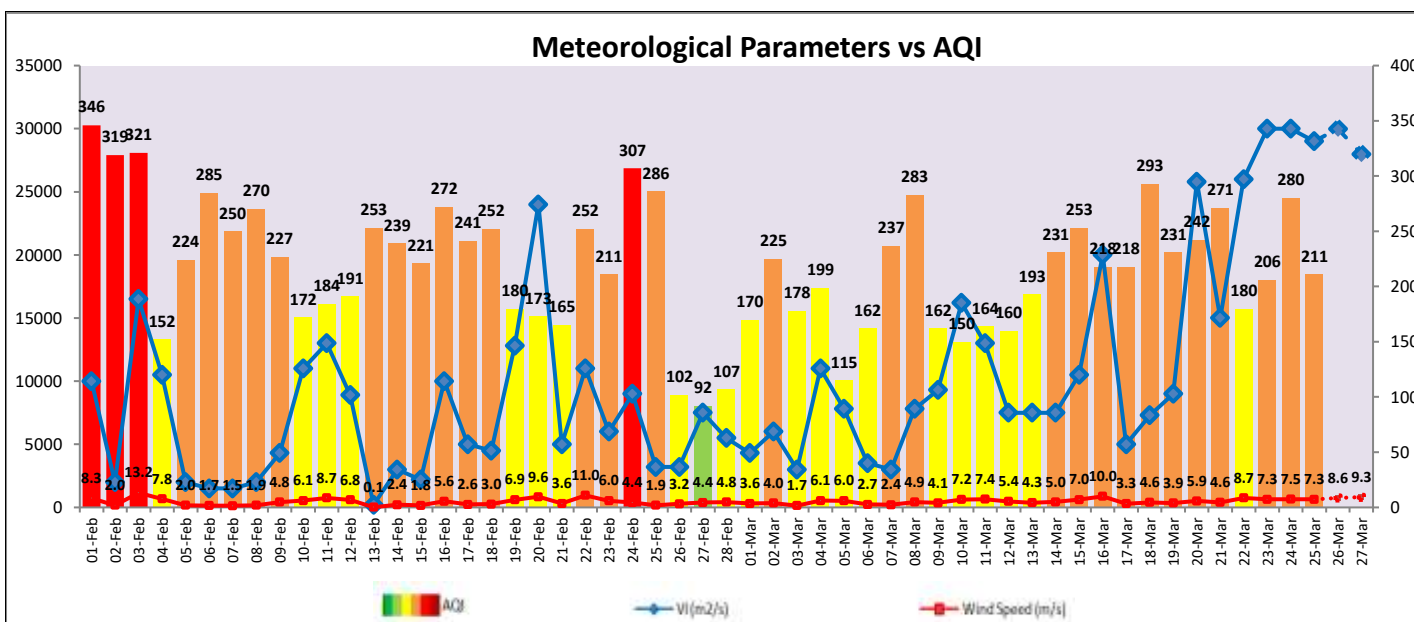
Parameters	March 26, 2022		March 27, 2022- March 28, 2022	
	Concentration	AQI Category	Concentration	AQI Category
PM ₁₀	181	Moderate	293	Poor
PM _{2.5}	67	Moderate	109	Poor

Wind Forecast for Delhi:

	Wind speed (at surface) in km/h		Wind speed (at 900 m) in km/h	Wind Direction	
	As per IMD (at 17:30 hrs.)	As per windy.com (at 16:00 hrs.)	As per windy.com (at 16:00hrs)	As per IMD (at 17:30hrs.)	As per windy.com at 900m
March 26, 2022	16	18	44	NW	NW
March 27, 2022	12	10	32	NW	NW
March 28, 2022	12	08	27	W	NW

IMD Alert for Tomorrow (26.03.2022):

The air quality is likely to remain in Poor to Moderate category on 26.03.2022 and Moderate category on 27.03.2022. The predominant surface wind is likely to be coming from Northwest direction of Delhi with wind speed 20-25 kmph, clear sky and strong surface winds (speed 25-35 kmph) during the day tomorrow. Ventilation index is likely to be greater than 30,000 m²/s. **Dust raising activities are likely over parts of Rajasthan and Gujarat and transport of dust from these regions as well as local dust will impact air quality over Northwest India.**



Hotspots for Today

City	Station Name	AQI value	Air Quality	Prominent Pollutant
Delhi	NSIT Dwarka, Delhi - CPCB	317	Very Poor	PM _{2.5}
	Dwarka-Sector 8, Delhi - DPCC	292	Poor	PM ₁₀
	Mundka, Delhi - DPCC	292	Poor	PM ₁₀
	Bawana, Delhi - DPCC	272	Poor	PM ₁₀
	ITO, Delhi - CPCB	272	Poor	PM _{2.5}
Faridabad	New Industrial Town, Faridabad - HSPCB	232	Poor	PM ₁₀
	Sector 11, Faridabad - HSPCB	182	Moderate	PM ₁₀
Gurugram	Teri Gram, Gurugram - HSPCB	298	Poor	PM _{2.5}
	Sector-51, Gurugram - HSPCB	246	Poor	PM ₁₀
Ghaziabad	Loni, Ghaziabad - UPPCB	302	Very Poor	PM ₁₀
	Sanjay Nagar, Ghaziabad - UPPCB	272	Poor	PM ₁₀
Greater Noida	Knowledge Park - III, Greater Noida - UPPCB	262	Poor	PM ₁₀
Noida	Sector - 62, Noida - IMD	208	Poor	PM ₁₀

	Sector-1, Noida - UPPCB	202	Poor	PM ₁₀
--	-------------------------	-----	------	------------------