



Central Pollution Control Board

Air Quality Status for Delhi & NCR

Dated – December 24, 2022



Current Air Quality Status:

Air Quality Index (AQI) (Average of past 24 hours)

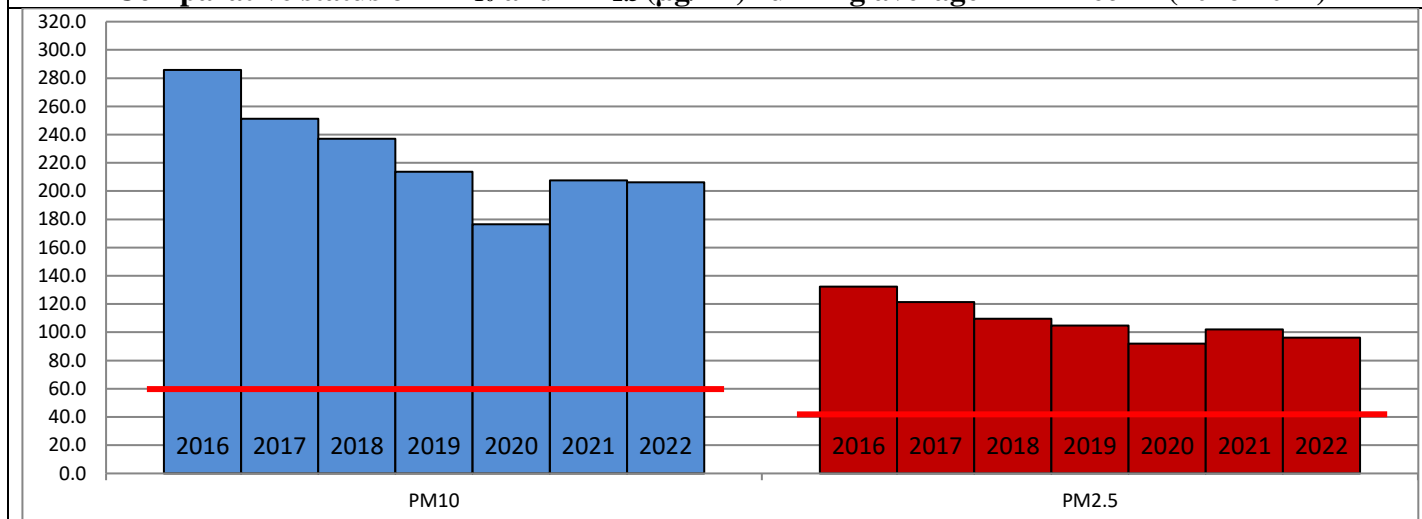
	Air Quality	AQI Value	Prominent Pollutant
Delhi	Very Poor	349 ↓	PM _{2.5}
Faridabad	Very Poor	314 ↓	PM _{2.5}
Ghaziabad	Poor	280 ↓	PM _{2.5}
Greater Noida	Very Poor	328 ↓	PM _{2.5}
Gurugram	Very Poor	355 ↑	PM _{2.5}
Noida	Poor	280 ↓	PM ₁₀ , PM _{2.5}

*Data available for 37 stations in Delhi today. # ↓ ↑ arrows indicate a decrease/increase as compared to the value on the previous day.

Comparative status of AQI - Delhi from 01 January to 24 December 2016-2022

Category	Year	2016	2017	2018	2019	2020	2021	2022	2016	2017	2018	2019	2020	2021	2022
	No. of days	347	358	358	358	359	358	358							
Good (0-50)		0	2	0	2	5	1	3							
Satisfactory (51-100)		24	45	53	59	95	81	65	110	152	159	182	227	197	163
Moderate (101-200)		86	105	106	121	127	115	95							
Poor (201-300)		120	115	114	103	72	77	130							
Very Poor (301-400)		93	82	68	52	45	62	59	237	206	199	176	132	161	195
Severe (>401)		24	9	17	21	15	22	6							

Comparative status of PM₁₀ and PM_{2.5} (µg/m³) running average – Till Dec 22 (2016-2022)



Hotspots for Today:

*Details given overleaf

Delhi	Nehru Nagar, Patparganj, R K Puram, Dwarka Sector-8, Rohini	Ghaziabad	Vasundhara
Faridabad	New Industrial Town, Sector-16A	Greater Noida	Knowledge Park -III
Gurugram	Sector-51	Noida	Sector-1, Sector-116

Forecast by IITM (Delhi):

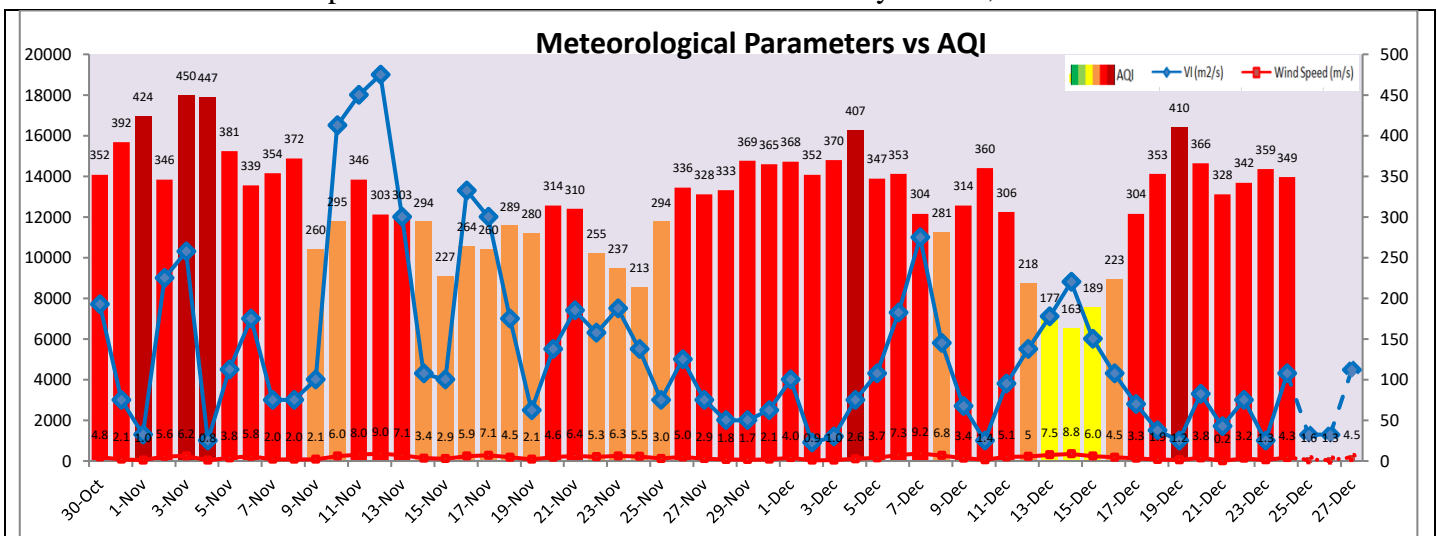
	Dec 25, 2022		Dec 26, 2022- Dec 27, 2022	
	Concentration	AQI Category	Concentration	AQI Category
PM ₁₀	319	Poor	348	Poor
PM _{2.5}	193	Very Poor	211	Very Poor

Wind Forecast for Delhi:

	Wind speed (at surface) in km/h		Wind speed (at 900 m) in km/h	Wind Direction	
	As per IMD (range)	As per windy.com (at 16:00 hrs.)	As per windy.com (at 16:00hrs)	As per IMD	As per windy.com at 900m
Dec 25, 2022	04-08	09	13	NW	NW
Dec 26, 2022	04-08	09	09	NW	NW
Dec 27, 2022	08	10	39	NW	NW

IMD Alert for Tomorrow (25.12.2022):

The air quality is likely to deteriorate on 25.12.2022 and 26.12.2022 but remain in Very Poor category. The predominant surface wind is likely to be coming from northwest direction in Delhi with wind speed 04-08 kmph during daytime and becoming calm in evening/night, partly cloudy sky and moderate fog in the morning, cold wave conditions at most places tomorrow. Ventilation index is likely to be 1,300 m²/s.



Hotspots for Today

City	Station Name	AQI value	Air Quality	Prominent Pollutant
Delhi	Nehru Nagar, Delhi - DPCC	401	Severe	PM _{2.5}
	Patparganj, Delhi - DPCC	389	Very Poor	PM _{2.5}
	R K Puram, Delhi - DPCC	389	Very Poor	PM _{2.5}
	Dwarka-Sector 8, Delhi - DPCC	388	Very Poor	PM _{2.5}
	Rohini, Delhi - DPCC	386	Very Poor	PM _{2.5}
Faridabad	Sector- 16A, Faridabad - HSPCB	379	Very Poor	PM _{2.5}
	New Industrial Town, Faridabad - HSPCB	318	Very Poor	PM ₁₀
Gurugram	Sector-51, Gurugram - HSPCB	363	Very Poor	PM _{2.5}
Ghaziabad	Vasundhara, Ghaziabad - UPPCB	340	Very Poor	PM _{2.5}
Greater Noida	Knowledge Park - III, Greater Noida - UPPCB	340	Very Poor	PM _{2.5}
Noida	Sector-116, Noida - UPPCB	337	Very Poor	PM _{2.5}
	Sector-1, Noida - UPPCB	311	Very Poor	PM _{2.5}