



Central Pollution Control Board

Air Quality Status for Delhi & NCR

Dated – December 24, 2021



Current Air Quality Status:

Air Quality Index (AQI) (Average of past 24 hours)

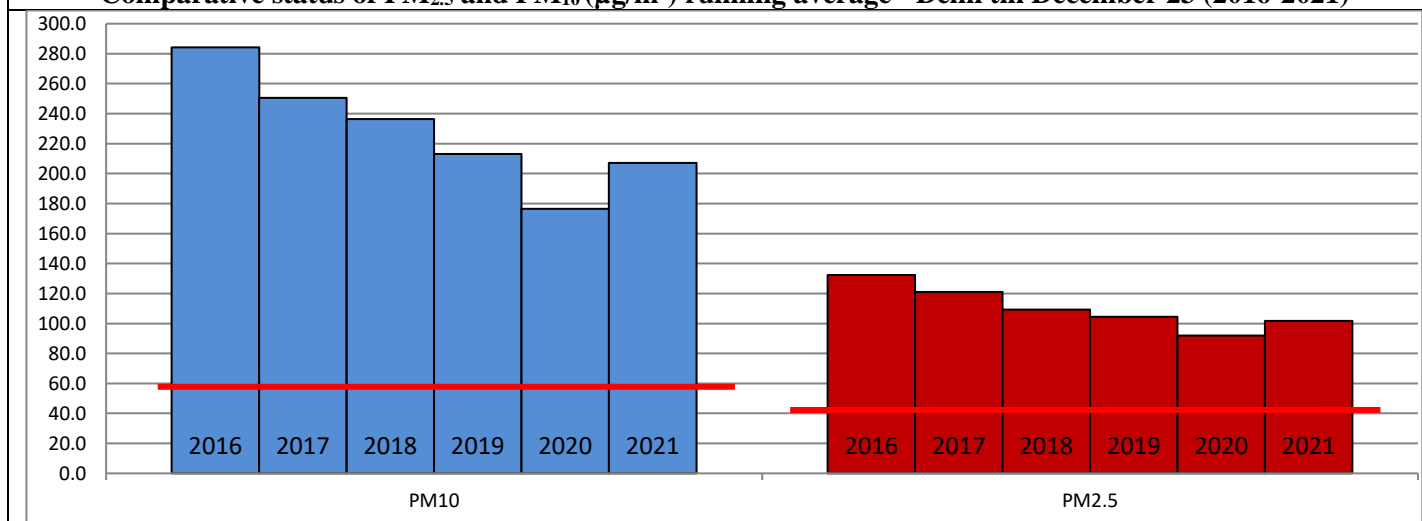
	Air Quality	AQI Value	Prominent Pollutant
Delhi	Severe	415↓	PM _{2.5}
Faridabad	Severe	414↓	PM _{2.5} , PM ₁₀
Ghaziabad	Very Poor	386↓	PM _{2.5}
Greater Noida	Very Poor	368↓	PM _{2.5}
Gurugram	Very Poor	334↓	PM _{2.5}
Noida	Very Poor	397↓	PM _{2.5} , PM ₁₀

*Data available for 36 stations in Delhi today. # ↓, ↑ arrows indicate increase/decrease as compared to value on the previous day

Comparative status of AQI - Delhi from 01 January to 24 December 2016-2021

Category	Year	2016	2017	2018	2019	2020	2021	2016	2017	2018	2019	2020	2021
	No. of days	347	358	358	359	360	359						
Good (0–50)		0	2	0	2	5	1						
Satisfactory (51–100)		25	45	53	59	95	72	108	152	159	182	227	197
Moderate (101–200)		83	105	106	121	127	124						
Poor (201–300)		120	115	114	104	73	78						
Very Poor (301–400)		95	82	68	52	45	62	239	206	199	177	133	162
Severe (>401)		24	9	17	21	15	22						

Comparative status of PM_{2.5} and PM₁₀ (µg/m³) running average - Delhi till December 23 (2016-2021)



Hotspots for Today:

*Details given overleaf

As per 5 pm data as data for 4 pm was not available

Delhi	Jahangirpuri, Bawana, Narela, Narela, DTU	Gurugram	NISE Gwal Pahari, Sector-51
Faridabad	New Industrial Town, Sector-16A	Greater Noida	Knowledge Park - III
Ghaziabad	Sanjay Nagar, Loni	Noida	Sector – 116, Sector – 01

Forecast by IITM:

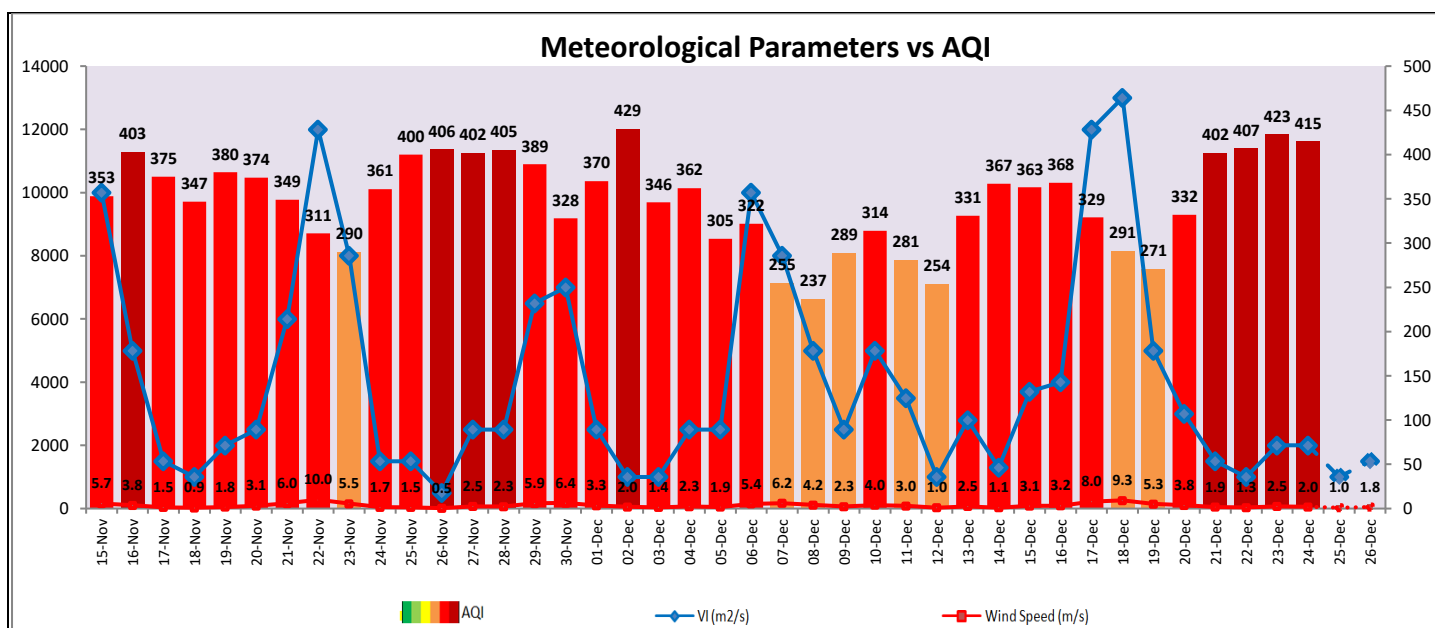
Parameters	December 25, 2021		December 26, 2021– December 27, 2021	
	Concentration	AQI Category	Concentration	AQI Category
PM ₁₀	402	Very Poor	382	Very Poor
PM _{2.5}	247	Very Poor	235	Very Poor

■ **Wind Forecast for Delhi:**

Dates	Wind speed (at surface) in km/h		Wind speed (at 900 m) in km/h	Wind Direction	
	As per IMD (at 17:30 hrs.)	As per windy.com (at 16:00 hrs.)	As per windy.com (at 16:00hrs)	As per IMD (at 17:30hrs.)	As per windy.com at 900m
December 25, 2021	06	04	05	ESE	NW
December 26, 2021	04	07	09	SE	E
December 27, 2021	04	07	04	E	NE

■ **IMD Alert for Tomorrow (25.12.2021):**

The air quality is likely to improve further but remain in Very Poor category on 25.12.2021 and 26.12.2021. The predominant surface wind is likely to be coming from East- Southeast direction of Delhi having wind speed 04-08 kmph with partly cloudy sky and shallow to moderate fog in the morning. Ventilation index is likely to be 1,000 m²/s.



■ **Hotspots for Today**

As per 5 pm data as data for 4 pm was not available

City	Station Name	AQI value	Air Quality	Prominent Pollutant
Delhi	Bawana, Delhi - DPCC	472	Severe	PM _{2.5}
	Jahangirpuri, Delhi - DPCC	472	Severe	PM _{2.5}
	Narela, Delhi - DPCC	467	Severe	PM _{2.5}
	Anand Vihar, Delhi - DPCC	460	Severe	PM _{2.5}
	DTU, Delhi - CPCB	459	Severe	PM _{2.5}
Faridabad	Sector- 16A, Faridabad - HSPCB	433	Severe	PM _{2.5}
	New Industrial Town, Faridabad - HSPCB	410	Severe	PM ₁₀
Gurugram	NISE Gwal Pahari, Gurugram - IMD	361	Very Poor	PM _{2.5}
	Sector-51, Gurugram - HSPCB	328	Very Poor	PM _{2.5}
Ghaziabad	Loni, Ghaziabad - UPPCB	431	Severe	PM _{2.5}
	Sanjay Nagar, Ghaziabad - UPPCB	415	Severe	PM _{2.5}
Greater Noida	Knowledge Park - III, Greater Noida - UPPCB	386	Very Poor	PM _{2.5}
Noida	Sector - 62, Noida - IMD	414	Severe	CO
	Sector-1, Noida - UPPCB	410	Severe	PM _{2.5}