



# Central Pollution Control Board

Air Quality Status for Delhi & NCR

Dated – November 24, 2022



## Current Air Quality Status:

### Air Quality Index (AQI) (Average of past 24 hours)

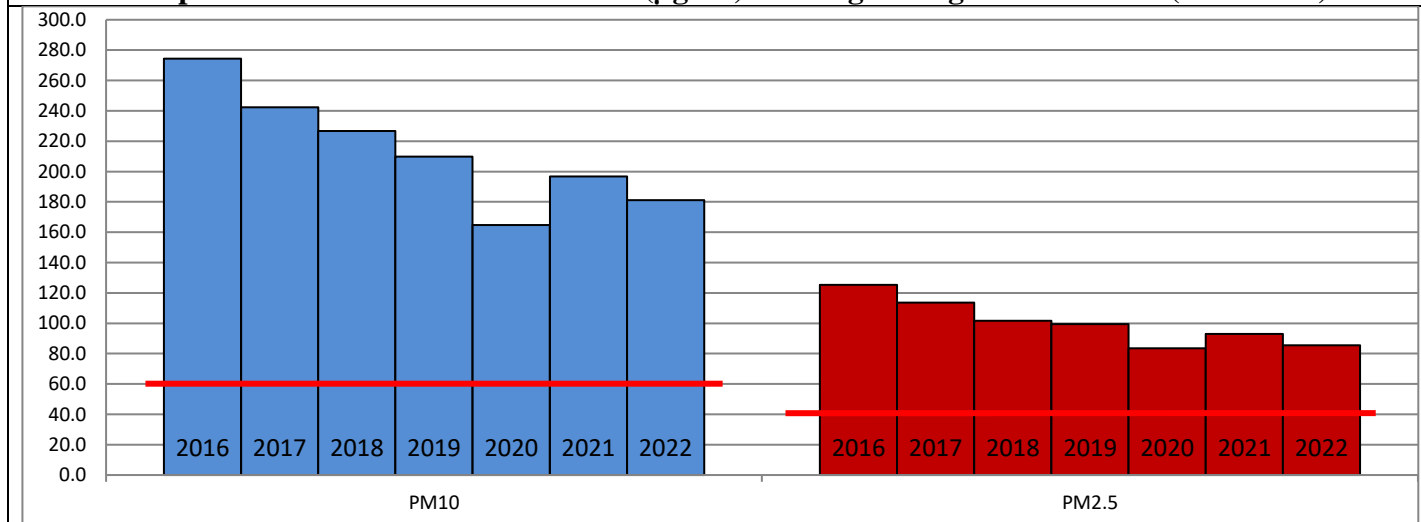
	Air Quality	AQI Value	Prominent Pollutant
Delhi	Poor	213 ↓	PM <sub>10</sub> , PM <sub>2.5</sub>
Faridabad	Poor	209 ↑	PM <sub>2.5</sub>
Ghaziabad	Moderate	166 ↓	PM <sub>10</sub>
Greater Noida	Moderate	197 ↓	PM <sub>10</sub>
Gurugram	Poor	216 ↑	PM <sub>2.5</sub>
Noida	Moderate	169 ↓	PM <sub>2.5</sub>

\*Data available for 36 stations in Delhi today. # ↓ ↑ arrows indicate a decrease/increase as compared to the value on the previous day.

### Comparative status of AQI - Delhi from 01 January to 24 November 2016-2022

Category	Year	2016	2017	2018	2019	2020	2021	2022	2016	2017	2018	2019	2020	2021	2022
	No. of days	317	328	328	328	329	328	328							
Good (0–50)		0	2	0	2	5	1	3							
Satisfactory (51–100)		24	45	53	58	95	81	65	110	150	158	175	225	197	160
Moderate (101–200)		86	103	105	115	125	115	92							
Poor (201–300)		116	105	109	94	63	70	126							
Very Poor (301–400)		73	65	49	43	31	47	38	207	178	170	153	104	131	168
Severe (>401)		18	8	12	16	10	14	4							

### Comparative status of PM<sub>10</sub> and PM<sub>2.5</sub> (µg/m<sup>3</sup>) running average – Till Nov 23 (2016-2022)



### Hotspots for Today:

\*Details given overleaf

Delhi	Burari Crossing, IHBAS – Dilshad Garden, Shadipur, Mundka, Bawana	Ghaziabad	Vasundhara, Sanjay Nagar
Faridabad	Sector- 11, Sector-30	Greater Noida	Knowledge Park-III
Gurugram	Sector-51	Noida	Sector – 62

### Forecast by IITM (Delhi):

	Nov 25, 2022		Nov 26, 2022- Nov 27, 2022	
	Concentration	AQI Category	Concentration	AQI Category
PM <sub>10</sub>	167	Moderate	197	Moderate
PM <sub>2.5</sub>	89	Moderate	105	Poor

## Wind Forecast for Delhi:

	Wind speed (at surface) in km/h		Wind speed (at 900 m) in km/h	Wind Direction	
	As per IMD (range)	As per windy.com (at 16:00 hrs.)	As per windy.com (at 16:00hrs)	As per IMD	As per windy.com at 900m
Nov 25, 2022	06-15	10	24	WNW	NW
Nov 26, 2022	Upto 06	09	35	NW	NW
Nov 27, 2022	08-12	09	18	W/NW	NW

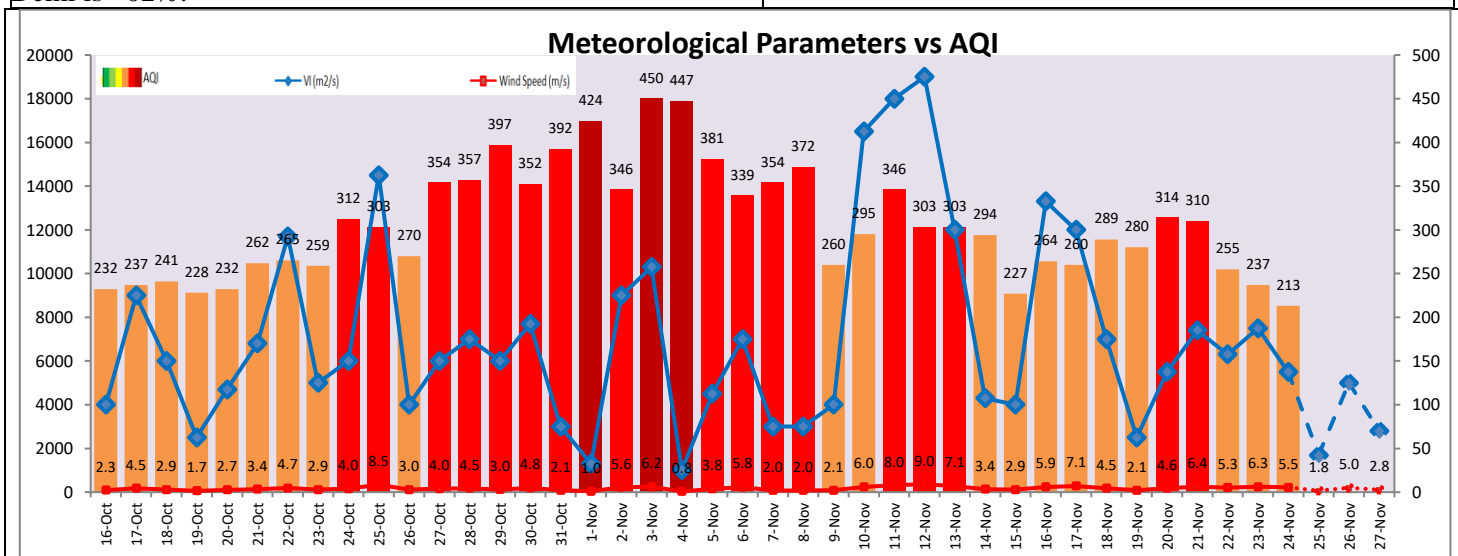
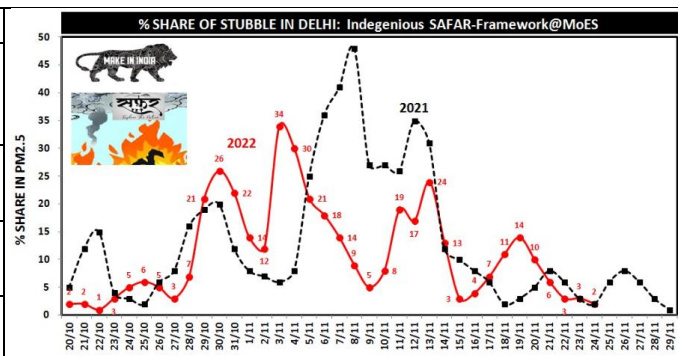
## IMD Alert for Tomorrow (25.11.2022):

The air quality is likely to deteriorate and reach in lower end of Very Poor category on 25.11.2022. The predominant surface wind is likely to be coming from West-Northwest direction in Delhi with wind speed 06-15 kmph, mainly clear sky and haze tomorrow. Ventilation index is likely to be 1,700 m<sup>2</sup>/s.

## Active Fire Events (AFE):

Date	Punjab		Haryana	
	Nos. on the day	Total since September 15	Nos. on the day	Total since September 15
23.11.2022	140	49744	27	3549
23.11.2021	91	71181	59	6792

\* As per IITM, the contribution of stubble burning to PM<sub>2.5</sub> in Delhi is ~02%.



## Hotspots for Today

City	Station Name	AQI value	Air Quality	Prominent Pollutant
Delhi	Burari Crossing, Delhi - IMD	348	Very Poor	PM <sub>10</sub>
	Shadipur, Delhi - CPCB	286	Poor	PM <sub>2.5</sub>
	IHBAS, Dilshad Garden, Delhi - CPCB	270	Poor	PM <sub>2.5</sub>
	Bawana, Delhi - DPCC	267	Poor	PM <sub>2.5</sub>
	Mundka, Delhi - DPCC	260	Poor	PM <sub>2.5</sub>
Faridabad	Sector 11, Faridabad - HSPCB	230	Poor	PM <sub>2.5</sub>
	Sector 30, Faridabad - HSPCB	230	Poor	PM <sub>2.5</sub>
Gurugram	Sector-51, Gurugram - HSPCB	261	Poor	PM <sub>2.5</sub>
Ghaziabad	Vasundhara, Ghaziabad - UPPCB	198	Moderate	PM <sub>10</sub>
	Sanjay Nagar, Ghaziabad - UPPCB	175	Moderate	PM <sub>10</sub>
Greater Noida	Knowledge Park - III, Greater Noida - UPPCB	202	Poor	PM <sub>10</sub>
Noida	Sector - 62, Noida - IMD	243	Poor	PM <sub>2.5</sub>