



# Central Pollution Control Board

Air Quality Status for Delhi & NCR

Dated – November 24, 2021



## Current Air Quality Status:

### Air Quality Index (AQI) (Average of past 24 hours)

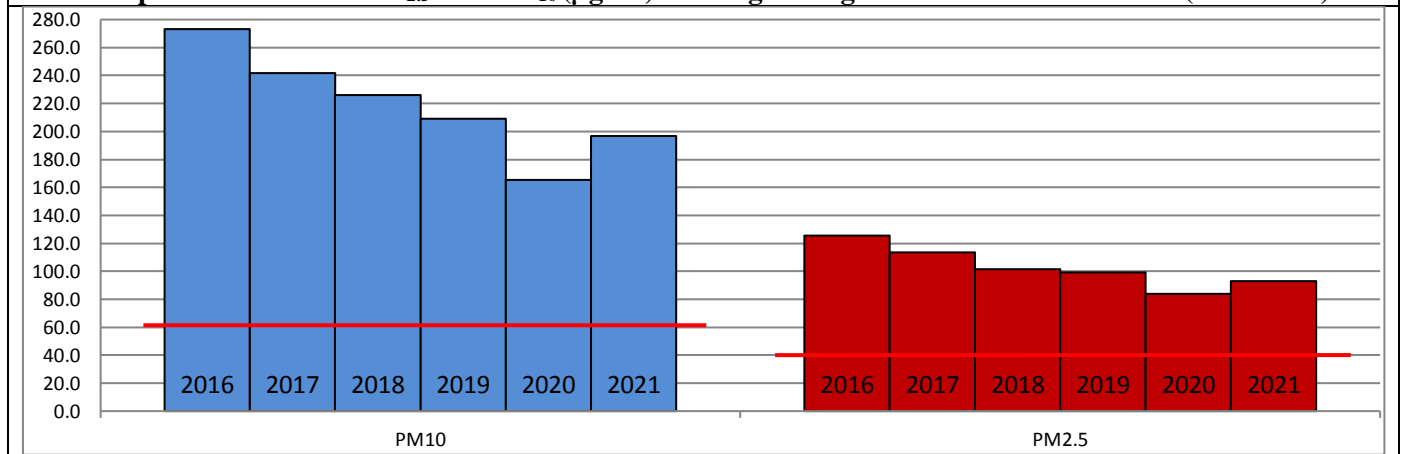
	Air Quality	AQI Value	Prominent Pollutant
Delhi	Very Poor	361 ↑	PM <sub>10</sub> , PM <sub>2.5</sub>
Faridabad	Very Poor	367 ↑	PM <sub>10</sub> , PM <sub>2.5</sub>
Ghaziabad	Very Poor	366 ↑	PM <sub>10</sub> , PM <sub>2.5</sub>
Greater Noida	Very Poor	312 ↑	PM <sub>2.5</sub>
Gurugram	Very Poor	305 ↑	PM <sub>2.5</sub>
Noida	Very Poor	325 ↑	PM <sub>10</sub> , PM <sub>2.5</sub>

\*Data available for 37 stations in Delhi today. # ↓, ↑ arrows indicate increase/decrease as compared to value on the previous day

### Comparative status of AQI - Delhi from 01 January to 24 November 2016-2021

Category	Year No. of days	2016	2017	2018	2019	2020	2021	2016	2017	2018	2019	2020	2021	
		317	328	328	328	329	328							
Good (0-50)		0	2	0	2	5	1							
Satisfactory (51-100)		25	45	53	58	95	72	108	150	158	175	225	197	
Moderate (101-200)		83	103	105	115	125	124							
Poor (201-300)		116	105	109	94	63	70							
Very Poor (301-400)		75	65	49	43	31	47	209	178	170	153	104	131	
Severe (>401)		18	8	12	16	10	14							

### Comparative status of PM<sub>2.5</sub> and PM<sub>10</sub> (µg/m<sup>3</sup>) running average - Delhi till November 23 (2016-2021)



\* The PM values are 24 hourly averages (6 am to 6 am)

### Hotspots for Today:

\*Details given overleaf

Delhi	Jahangirpuri, Chandni Chowk, Anand Vihar, Wazirpur, Sonia Vihar	Gurugram	Sector – 51, Teri Gram
Faridabad	Sector -11, Sector – 16 A	Greater Noida	Knowledge Park - V
Ghaziabad	Loni, Vasundhara	Noida	Sector – 62, Sector - 116

### Forecast by IITM:

Parameters	November 25, 2021		November 26, 2021– November 27, 2021	
	Concentration	AQI Category	Concentration	AQI Category
PM <sub>10</sub>	360	Very Poor	392	Very Poor
PM <sub>2.5</sub>	188	Very Poor	205	Very Poor

**Wind Forecast for Delhi:**

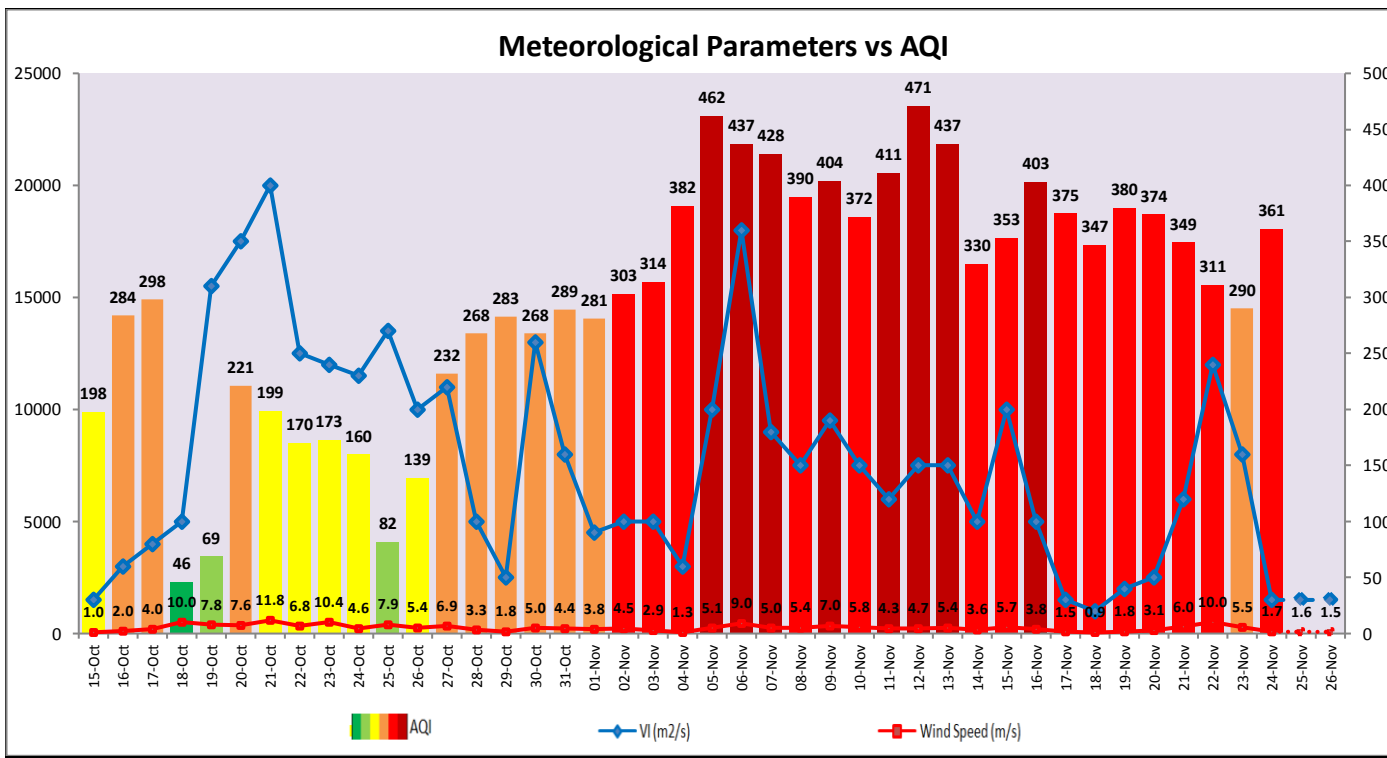
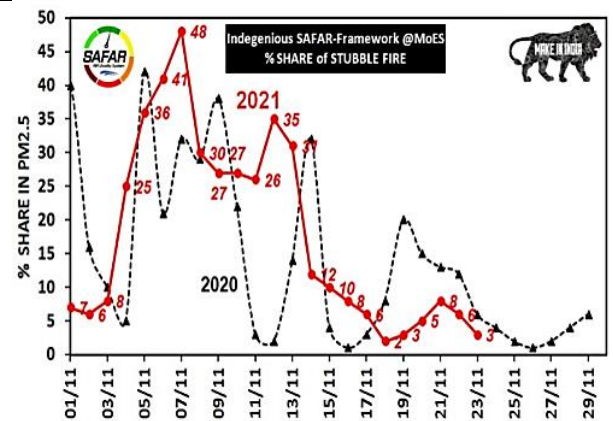
Dates	Wind speed (at surface) in km/h		Wind speed (at 900 m) in km/h	Wind Direction	
	As per IMD (at 17:30 hrs.)	As per windy.com (at 16:00 hrs.)	As per windy.com (at 16:00hrs)	As per IMD (at 17:30hrs.)	As per windy.com at 900m
November 25, 2021	08	06	13	E	W
November 26, 2021	CALM	06	02	E	SE
November 27, 2021	08	07	08	E	SE

**IMD Alert for Tomorrow (25.11.2021):**

The air quality is likely to deteriorate and reach in upper end of Very Poor category. The predominant surface wind is likely to be coming from Southeast/Southwest direction with wind speed 05-08 kmph and likely to remain calm during evening/night, mainly clear sky and shallow fog in the morning. Ventilation index is likely to be 1,500 m<sup>2</sup>/s.

**Active Fire Events (AFEs)**

Date	Punjab		Haryana	
	Nos. on the day	Total since September 21	Nos. on the day	Total since September 21
23.11.2021	91	71181	59	6792
23.11.2020	43	82693	52	4016



▪ **Hotspots for Today**

City	Station Name	AQI value	Air Quality	Prominent Pollutant
Delhi	Jahangirpuri, Delhi - DPCC	456	Severe	PM <sub>2.5</sub>
	Chandni Chowk, Delhi - IITM	442	Severe	PM <sub>2.5</sub>
	Anand Vihar, Delhi - DPCC	429	Severe	PM <sub>10</sub>
	Wazirpur, Delhi - DPCC	417	Severe	PM <sub>10</sub>
	Sonia Vihar, Delhi - DPCC	412	Severe	PM <sub>2.5</sub>
Faridabad	Sector 11, Faridabad - HSPCB	409	Severe	PM <sub>10</sub>
	Sector- 16A, Faridabad - HSPCB	363	Very Poor	PM <sub>2.5</sub>
Gurugram	Sector-51, Gurugram - HSPCB	374	Very Poor	PM <sub>2.5</sub>
	Teri Gram, Gurugram - HSPCB	289	Poor	PM <sub>2.5</sub>
Ghaziabad	Loni, Ghaziabad - UPPCB	406	Severe	PM <sub>2.5</sub>
	Vasundhara, Ghaziabad - UPPCB	376	Very Poor	PM <sub>10</sub>
Greater Noida	Knowledge Park - V, Greater Noida - UPPCB	312	Very Poor	PM <sub>2.5</sub>
Noida	Sector - 62, Noida - IMD	398	Very Poor	PM <sub>10</sub>
	Sector-116, Noida - UPPCB	326	Very Poor	PM <sub>2.5</sub>