



# Central Pollution Control Board

Air Quality Status for Delhi & NCR

Dated – October 24, 2022



## Current Air Quality Status:

### Air Quality Index (AQI) (Average of past 24 hours)

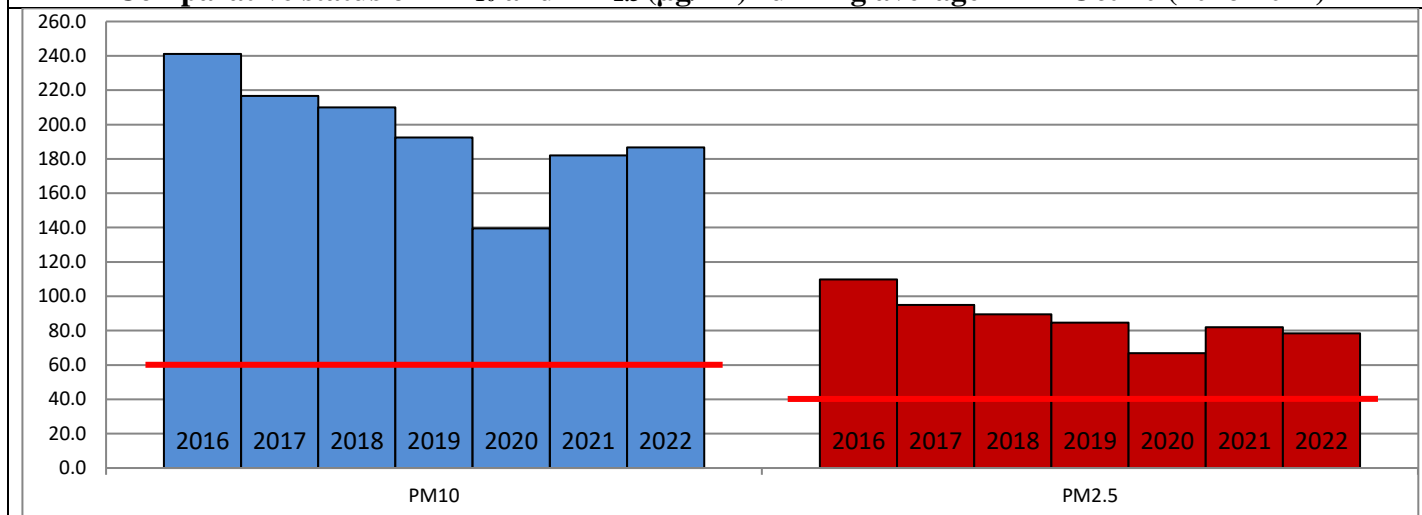
	Air Quality	AQI Value	Prominent Pollutant
Delhi	Very Poor	312 ↑	PM <sub>10</sub> , PM <sub>2.5</sub>
Faridabad	Poor	254 ↑	PM <sub>2.5</sub>
Ghaziabad	Poor	300 ↑	PM <sub>10</sub> , PM <sub>2.5</sub>
Greater Noida	Poor	274 ↑	PM <sub>2.5</sub>
Gurugram	Very Poor	322 ↑	PM <sub>2.5</sub>
Noida	Very Poor	305 ↑	PM <sub>10</sub> , PM <sub>2.5</sub>

\*Data available for 35 stations in Delhi today. # ↑ ↓ arrows indicate a decrease/increase as compared to the value on the previous day.

### Comparative status of AQI - Delhi from 01 January to 24 October 2016-2022

Category	Year	2016	2017	2018	2019	2020	2021	2022	2016	2017	2018	2019	2020	2021	2022
	No. of days	286	297	297	297	298	297	297							
Good (0–50)		0	2	0	2	5	1	3							
Satisfactory (51–100)		24	45	53	58	95	80	65	110	150	157	175	224	195	160
Moderate (101–200)		86	103	104	115	124	114	92							
Poor (201–300)		114	102	103	86	54	63	114							
Very Poor (301–400)		56	44	31	29	18	33	22	176	147	140	122	74	102	137
Severe (>401)		6	1	6	7	2	6	1							

### Comparative status of PM<sub>10</sub> and PM<sub>2.5</sub> (µg/m<sup>3</sup>) running average – Till Oct 20 (2016-2022)



### Hotspots for Today:

\*Details given overleaf

Delhi	Anand Vihar, North Campus, Nehru Nagar, Jahangirpuri, R K Puram	Ghaziabad	Loni, Indirapuram
Faridabad	Sector-16A, Sector-30	Greater Noida	Knowledge Park-III
Gurugram	Sector-51, Teri Gram	Noida	Sector-116, Sector - 62

### Forecast by IITM (Delhi):

	Oct 25, 2022		Oct 26, 2022- Oct 27, 2022	
	Concentration	AQI Category	Concentration	AQI Category
PM <sub>10</sub>	295	Poor	266	Poor
PM <sub>2.5</sub>	189	Very Poor	170	Very Poor

### Wind Forecast for Delhi:

	Wind speed (at surface) in km/h		Wind speed (at 900 m) in km/h	Wind Direction	
	As per IMD (range)	As per windy.com (at 16:00 hrs.)	As per windy.com (at 16:00hrs)	As per IMD	As per windy.com at 900m
Oct 25, 2022	10-16	08	36	NW	NW
Oct 26, 2022	04-06	05	18	NE/E	W
Oct 27, 2022	06	07	09	NE/E	W

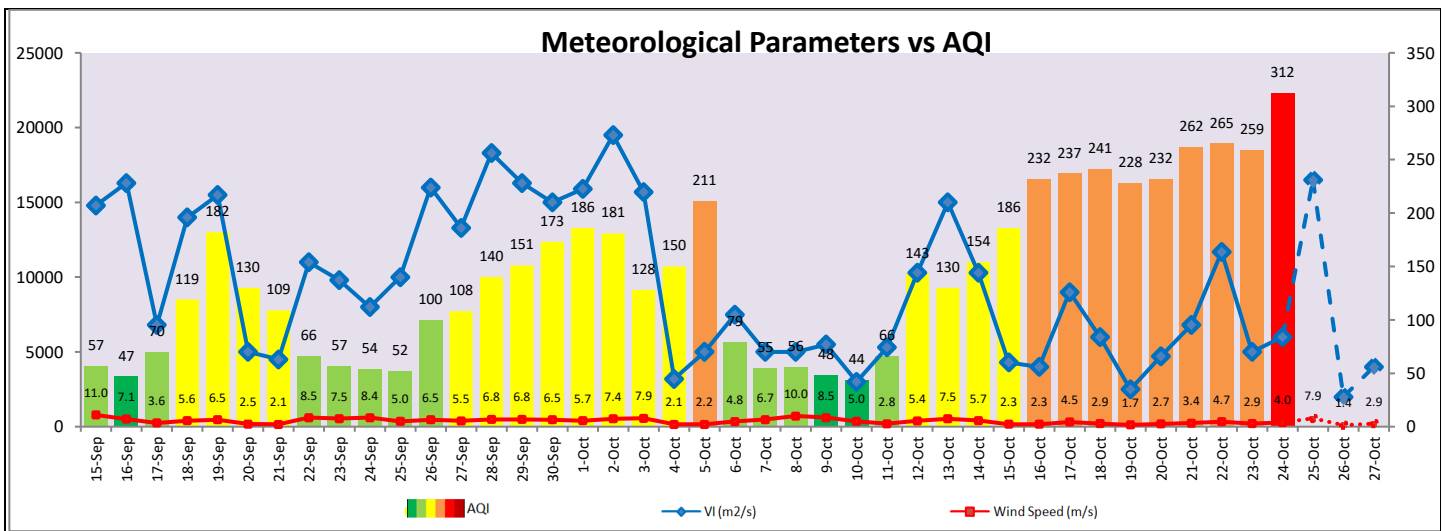
### IMD Alert for Tomorrow (25.10.2022):

The air quality is likely to deteriorate further but remain in Very Poor category on 25.10.2022. The predominant surface wind is likely to be coming from Northwest direction in Delhi with wind speed 10- 16 kmph and becoming calm in evening/night and mainly clear sky tomorrow. Ventilation index is likely to be 16,500 m<sup>2</sup>/s.

### Active Fire Events (AFE):

Date	Punjab		Haryana	
	Nos. on the day	Total since September 15	Nos. on the day	Total since September 15
24.10.2022	1019	5617	250	1360
24.10.2021	0	6058	38	1764

\* As per IITM, the impact of stubble burning is ~ 10%.



### Hotspots for Today

City	Station Name	AQI value	Air Quality	Prominent Pollutant
Delhi	Anand Vihar, Delhi - DPCC	398	Very Poor	PM <sub>10</sub>
	North Campus, DU, Delhi - IMD	384	Very Poor	PM <sub>2.5</sub>
	Nehru Nagar, Delhi - DPCC	351	Very Poor	PM <sub>2.5</sub>
	Jahangirpuri, Delhi - DPCC	343	Very Poor	PM <sub>2.5</sub>
	R K Puram, Delhi - DPCC	339	Very Poor	PM <sub>2.5</sub>
Faridabad	Sector- 16A, Faridabad - HSPCB	319	Very Poor	PM <sub>2.5</sub>
	Sector 30, Faridabad - HSPCB	285	Poor	PM <sub>2.5</sub>
Gurugram	Sector-51, Gurugram - HSPCB	350	Very Poor	PM <sub>2.5</sub>
	Teri Gram, Gurugram - HSPCB	335	Very Poor	PM <sub>2.5</sub>
Ghaziabad	Loni, Ghaziabad - UPPCB	381	Very Poor	PM <sub>2.5</sub>
	Indirapuram, Ghaziabad - UPPCB	307	Very Poor	PM <sub>2.5</sub>
Greater Noida	Knowledge Park - III, Greater Noida - UPPCB	275	Poor	PM <sub>2.5</sub>
Noida	Sector-116, Noida - UPPCB	332	Very Poor	PM <sub>2.5</sub>
	Sector - 62, Noida - IMD	315	Very Poor	PM <sub>2.5</sub>