



Central Pollution Control Board

Air Quality Status for Delhi & NCR

Dated – March 24, 2022



Current Air Quality Status:

Air Quality Index (AQI) (Average of past 24 hours)

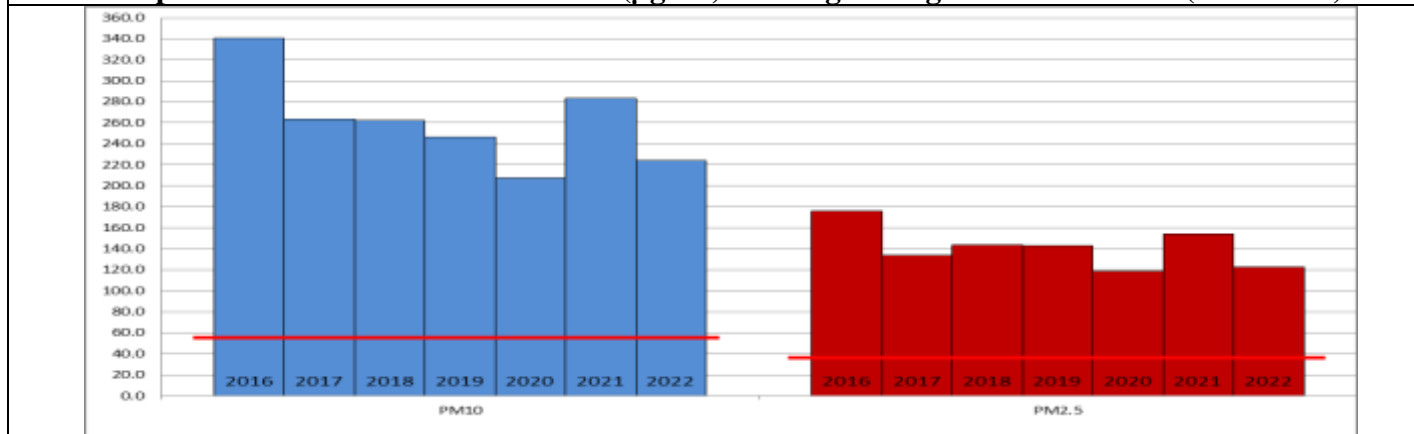
	Air Quality	AQI Value	Prominent Pollutant
Delhi	Poor	280↑	PM ₁₀
Faridabad	Poor	300↑	PM _{2.5} , PM ₁₀
Ghaziabad	Very Poor	361↑	PM ₁₀
Greater Noida	Very Poor	320↑	PM ₁₀
Gurugram	Poor	227↑	PM ₁₀
Noida	Poor	298↑	PM ₁₀

*Data available for 37 stations in Delhi today. # ↑ ↓ arrows indicate increase/decrease as compared to value on the previous day

Comparative status of AQI - Delhi from 01 January to 24 March 2016-2022

Category	Year	2016	2017	2018	2019	2020	2021	2022	2016	2017	2018	2019	2020	2021	2022
		No. of days													
Good (0–50)		0	0	0	0	0	0	0							
Satisfactory (51–100)		0	0	0	1	5	0	3	6	13	22	28	32	10	26
Moderate (101–200)		6	13	22	27	27	10	23							
Poor (201–300)		26	46	37	27	35	36	39							
Very Poor (301–400)		42	24	21	21	15	31	17	74	70	61	55	52	73	57
Severe (>401)		6	0	3	7	2	6	1							

Comparative status of PM_{2.5} and PM₁₀ (µg/m³) running average – Till March 23 (2016-2022)



Hotspots for Today:

*Details given overleaf

Delhi	Mundka, Anand Vihar, Nehru Nagar, Dwarka- Sector 8, Chandni Chowk	Gurugram	Sector -51
Faridabad	Sector 11, New Industrial Town	Greater Noida	Knowledge Park - III
Ghaziabad	Loni, Sanjay Nagar	Noida	Sector – 116, Sector - 62

Forecast by IITM:

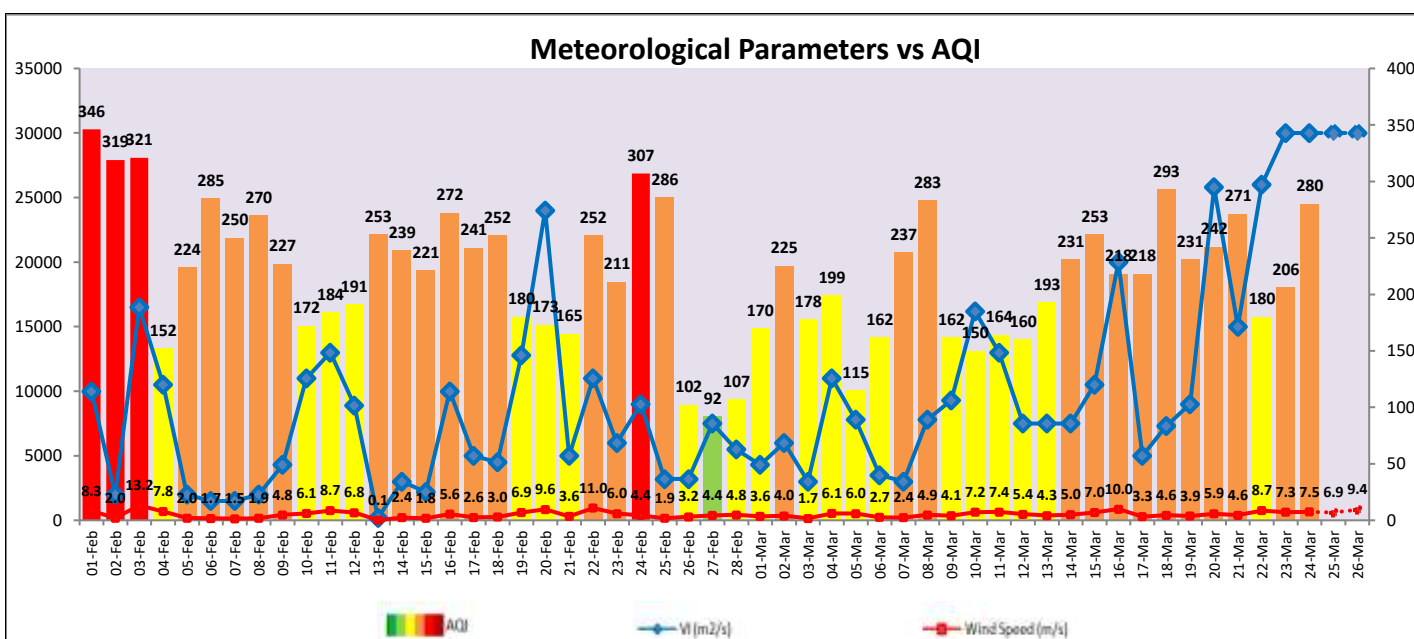
Parameters	March 25, 2022		March 26, 2022- March 27, 2022	
	Concentration	AQI Category	Concentration	AQI Category
PM ₁₀	303	Poor	330	Poor
PM _{2.5}	126	Very Poor	138	Very Poor

Wind Forecast for Delhi:

	Wind speed (at surface) in km/h		Wind speed (at 900 m) in km/h	Wind Direction	
	As per IMD (at 17:30 hrs.)	As per windy.com (at 16:00 hrs.)	As per windy.com (at 16:00hrs)	As per IMD (at 17:30hrs.)	As per windy.com at 900m
March 25, 2022	10	14	32	WNW	NW
March 26, 2022	12	18	46	WNW	NW
March 27, 2022	10	09	30	WNW	NW

IMD Alert for Tomorrow (25.03.2022):

The air quality is likely to remain in Moderate to Lower end of Poor category on 25.03.2022. The predominant surface wind is likely to be coming from West-Northwest direction of Delhi with wind speed 08-15 kmph and mainly clear sky tomorrow. Ventilation index is likely to be greater than 30,000 m²/s. **Dust raising activities are likely over parts of Rajasthan and Gujarat and transport of dust from these regions as well as local dust will impact air quality over Northwest India.**



Hotspots for Today

City	Station Name	AQI value	Air Quality	Prominent Pollutant
Delhi	Mundka, Delhi - DPCC	359	Very Poor	PM ₁₀
	Anand Vihar, Delhi - DPCC	351	Very Poor	PM ₁₀
	Nehru Nagar, Delhi - DPCC	347	Very Poor	PM ₁₀
	Dwarka-Sector 8, Delhi - DPCC	342	Very Poor	PM ₁₀
	Chandni Chowk, Delhi - IITM	338	Very Poor	PM ₁₀
Faridabad	New Industrial Town, Faridabad - HSPCB	351	Very Poor	PM ₁₀
	Sector 11, Faridabad - HSPCB	287	Poor	PM _{2.5}
Gurugram	Sector-51, Gurugram - HSPCB	248	Poor	PM ₁₀
Ghaziabad	Loni, Ghaziabad - UPPCB	379	Very Poor	PM ₁₀
	Sanjay Nagar, Ghaziabad - UPPCB	356	Very Poor	PM ₁₀
Greater Noida	Knowledge Park - III, Greater Noida - UPPCB	325	Very Poor	PM ₁₀
Noida	Sector - 62, Noida - IMD	344	Very Poor	PM ₁₀
	Sector-116, Noida - UPPCB	292	Poor	PM ₁₀