



Central Pollution Control Board

Air Quality Status for Delhi & NCR

Dated – January 24, 2022



Current Air Quality Status:

Air Quality Index (AQI) (Average of past 24 hours)

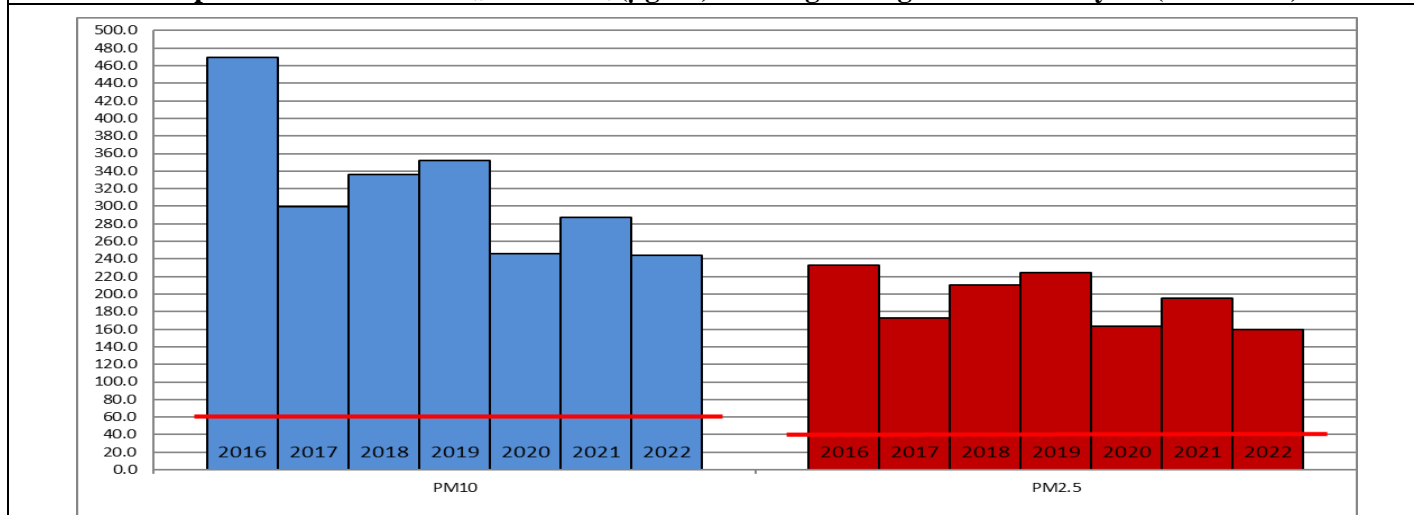
	Air Quality	AQI Value	Prominent Pollutant
Delhi	Poor	241	PM _{2.5}
Faridabad	Poor	202	PM ₁₀ , PM _{2.5}
Ghaziabad	Poor	255	PM _{2.5}
Greater Noida	Poor	257	PM _{2.5}
Gurugram	Moderate	121	PM ₁₀ , PM _{2.5}
Noida	Poor	243	PM _{2.5}

*Data available for 32 stations in Delhi today. # arrows indicate increase/decrease as compared to value on the previous day

Comparative status of AQI - Delhi from 01 January to 24 January 2016-2022

Category	Year	2016	2017	2018	2019	2020	2021	2022	2016	2017	2018	2019	2020	2021	2022
	No. of days	24	24	24	24	24	24	24							
Good (0–50)		0	0	0	0	0	0	0							
Satisfactory (51–100)		0	0	0	0	0	0	2	0	0	0	1	1	2	5
Moderate (101–200)		0	0	0	1	1	2	3							
Poor (201–300)		2	7	5	5	13	8	6							
Very Poor (301–400)		18	17	16	11	8	8	12	24	24	24	23	23	22	19
Severe (>401)		4	0	3	7	2	6	1							

Comparative status of PM_{2.5} and PM₁₀ (µg/m³) running average – Till January 23 (2016-2022)



Hotspots for Today:

*Details given overleaf

Delhi	Anand Vihar, Jahangirpuri, Wazirpur, Patparganj, Rohini	Gurugram	Sector-51, Vikas Sadan
Faridabad	Sector-30, Sector-16A	Greater Noida	Knowledge Park – V
Ghaziabad	Vasundhara, Sanjay Nagar	Noida	Sector -116, Sector - 1

Forecast by IITM:

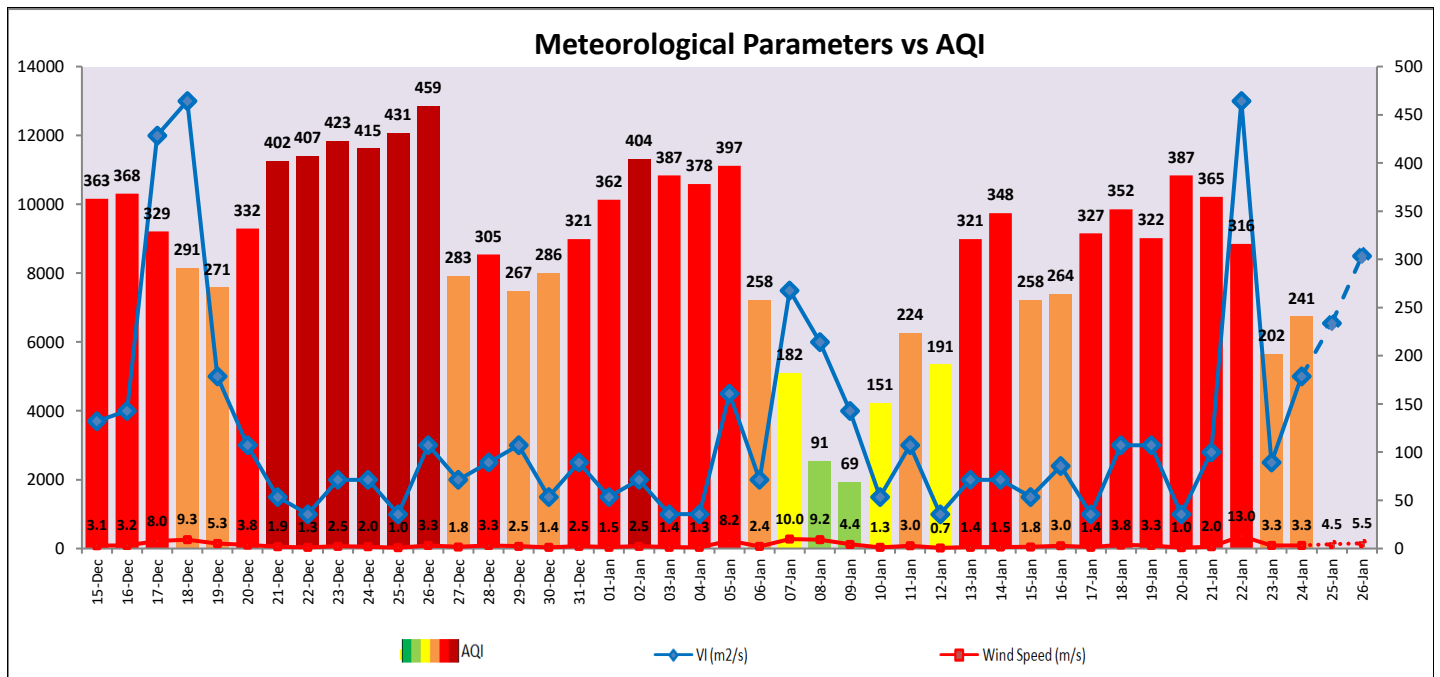
Parameters	January 25, 2022		January 26, 2022-January 27, 2022	
	Concentration	AQI Category	Concentration	AQI Category
PM ₁₀	182	Moderate	215	Moderate
PM _{2.5}	122	Very Poor	144	Very Poor

▪ **Wind Forecast for Delhi:**

	Wind speed (at surface) in km/h		Wind speed (at 900 m) in km/h	Wind Direction	
	As per IMD (at 17:30 hrs.)	As per windy.com (at 16:00 hrs.)	As per windy.com (at 16:00hrs)	As per IMD (at 17:30hrs.)	As per windy.com at 900m
January 25, 2022	10	08	21	NW	W
January 26, 2022	12	09	28	NW	NW
January 27, 2022	12	09	28	NW	NW

▪ **IMD Alert for Tomorrow (25.01.2022):**

The air quality over Delhi-NCT is likely to remain in Poor category on 25.01.2022 and 26.01.2022. The predominant surface wind is likely to be coming from Northwest direction of Delhi with wind speed 06-10 kmph, partly cloudy sky, cold day conditions at isolated places and **moderate fog in the morning** tomorrow. Ventilation index is likely to be 6,550 m²/s.



▪ **Hotspots for Today**

City	Station Name	AQI value	Air Quality	Prominent Pollutant
Delhi	Anand Vihar, Delhi - DPCC	385	Very Poor	PM _{2.5}
	Jahangirpuri, Delhi - DPCC	384	Very Poor	PM _{2.5}
	Wazirpur, Delhi - DPCC	336	Very Poor	PM _{2.5}
	Patparganj, Delhi - DPCC	320	Very Poor	PM _{2.5}
	Rohini, Delhi - DPCC	312	Very Poor	PM _{2.5}
Faridabad	Sector- 16A, Faridabad - HSPCB	231	Poor	PM _{2.5}
	Sector 30, Faridabad - HSPCB	164	Moderate	PM ₁₀
Gurugram	Sector-51, Gurugram - HSPCB	169	Moderate	PM _{2.5}
	Vikas Sadan, Gurugram - HSPCB	119	Moderate	PM _{2.5}
Ghaziabad	Vasundhara, Ghaziabad - UPPCB	277	Poor	PM _{2.5}
	Sanjay Nagar, Ghaziabad - UPPCB	257	Poor	PM _{2.5}
Greater Noida	Knowledge Park - V, Greater Noida - UPPCB	261	Poor	PM _{2.5}
Noida	Sector-116, Noida - UPPCB	274	Poor	PM _{2.5}
	Sector-1, Noida - UPPCB	249	Poor	PM _{2.5}