



# Central Pollution Control Board

## Air Quality Status for Delhi & NCR

Dated – December 23, 2023



### Current Air Quality Status:

#### Air Quality Index (AQI) (Average of past 24 hours at 4 PM) in comparison with last two years

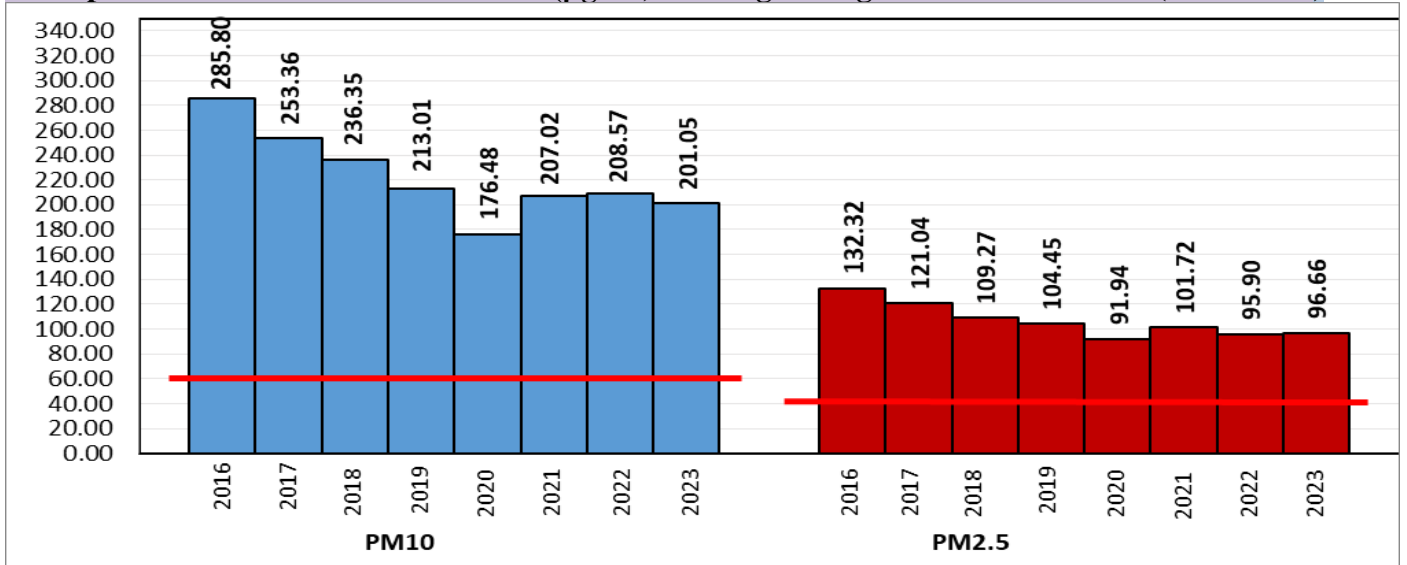
	2023			2022			2021(Covid- Year)		
	Air Quality	AQI Value	Prominent Pollutant	Air Quality	AQI Value	Prominent Pollutant	Air Quality	AQI Value	Prominent Pollutant
Delhi	Severe	450↑	PM2.5	Very Poor	359 ↑	PM10, PM2.5	Severe	423↑	PM2.5
Faridabad	Very Poor	367↑	PM2.5	Very Poor	341 ↓	PM10, PM2.5	Severe	452↑	PM2.5
Ghaziabad	Very Poor	388↑	PM10, PM2.5	Poor	284 ↓	PM2.5	Severe	411↑	PM2.5
Greater Noida	Very Poor	385↓	PM2.5	Very Poor	356 ↑	PM2.5	Severe	412↑	PM2.5
Gurugram	Very Poor	350↑	PM2.5	Very Poor	335 ↑	PM2.5	Very Poor	362↑	PM2.5
Noida	Very Poor	390↑	PM10, PM2.5	Very Poor	319 ↓	PM10, PM2.5	Severe	432↑	PM2.5, PM10

\*Data available for 36(2023), 35(2022), 36(2021) stations in Delhi today. # ↑, ↓ arrows indicate a decrease/increase as compared to the value on the previous day.

#### Comparative status of AQI - Delhi from 01 January to 23 December 2016-2023

Category	Year	2016	2017	2018	2019	2020	2021	2022	2023	2016	2017	2018	2019	2020	2021	2022	2023
	No. of days	346	357	357	357	358	357	357	357	2016	2017	2018	2019	2020	2021	2022	2023
Good (0-50)		0	2	0	2	4	1	3	1								
Satisfactory (51-100)		24	45	53	59	96	72	65	60	110	153	158	182	227	197	163	206
Moderate (101-200)		86	106	105	121	127	124	95	145								
Poor (201-300)		119	114	113	103	72	77	130	77								
Very Poor (301-400)		92	82	70	51	45	62	58	60	236	204	199	175	131	160	194	151
Severe (>401)		25	8	16	21	14	21	6	14								

#### Comparative status of PM10 and PM2.5 (µg/m³) running average - Till December 22 (2016- 2023)



\*Red line shows the annual average concentration standards for PM10 and PM2.5.

#### Daily Average of Particulates in Delhi (24 hourly average value; from 06:00am of 22.12.23 to 06:00 am of 23.12.23)

Date ↓ / parameter →	PM2.5 (µg/m³)	PM10 (µg/m³)
22- December -2023	332↑	522↑

Hotspots for Today:

\*Details given below

Delhi	Wazirpur, Jahangirpuri, Rohini, Mundka, Punjabi Bagh	Ghaziabad	Loni, Sanjay Nagar
Faridabad	Sector- 16A, New Industrial Town	Greater Noida	Knowledge Park -V
Gurugram	Teri Gram	Noida	Sector-116, Sector - 62, Sector-1

Forecast by IITM (Delhi):

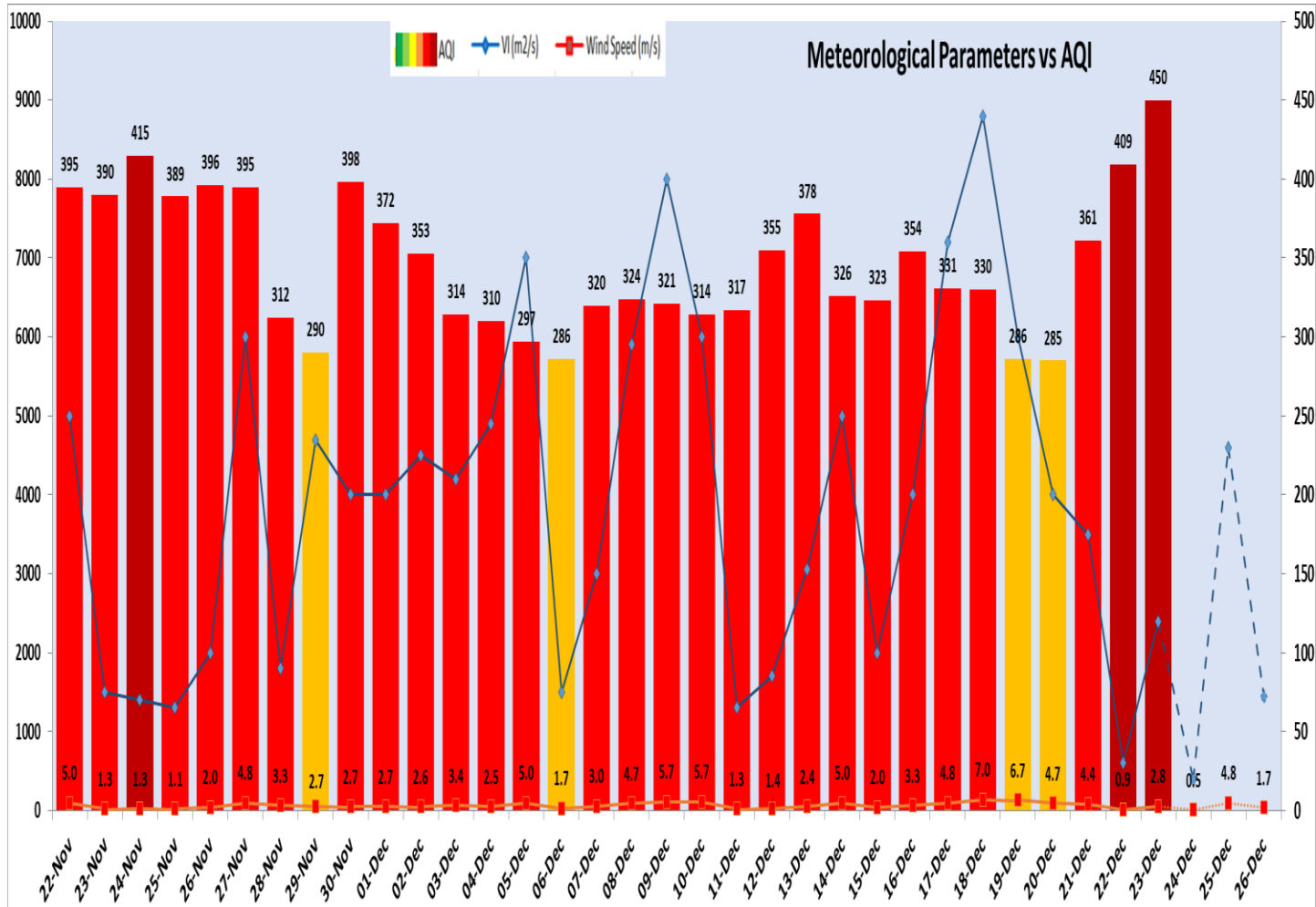
	Dec 24, 2023	Dec 25, 2023	Dec 26, 2023
<b>AQI Category</b>	Severe	Very Poor	Very Poor

Wind Forecast for Delhi:

	Wind speed (at surface) in km/h		Wind speed (at 900 m) in km/h	Wind Direction	
	As per IMD (range)	As per windy.com (at 16:00 hrs.)	As per windy.com (at 16:00hrs)	As per IMD	As per windy.com at 900m
Dec 24. 2023	04 TO 08	9	12	SE	NW
Dec 25. 2023	04 TO 10	10	35	SE	NW
Dec 26. 2023	UPTO 04	5	13	VAR	NW

IMD Alert for Tomorrow (24.12.2023):

The air quality is likely to remain in Severe category on 24.12.2023. The predominant surface wind is likely to be coming from Southeast direction in Delhi with wind speed 04-08 kmph, mainly clear sky and moderate to dense fog in the morning on 24.12.2023. Ventilation index is likely to be 400 m<sup>2</sup>/s.



Delhi Temperature in (°C)		
Date	Minimum	Maximum
20-12-2023	6.2	23.5
21-12-2023	6.4	22.2
22-12-2023	6.2	23.0
23-12-2023	9.6	23.0

▪ **Hotspots for Today**

City	Station Name	AQI value	Air Quality	Prominent Pollutant
Delhi	Wazirpur, Delhi - DPCC	489	Severe	PM <sub>2.5</sub>
	Jahangirpuri, Delhi - DPCC	486	Severe	PM <sub>2.5</sub>
	Rohini, Delhi - DPCC	486	Severe	PM <sub>2.5</sub>
	Mundka, Delhi - DPCC	485	Severe	PM <sub>2.5</sub>
	Punjabi Bagh, Delhi - DPCC	472	Severe	PM <sub>2.5</sub>
Faridabad	Sector- 16A, Faridabad - HSPCB	455	Severe	PM <sub>2.5</sub>
	New Industrial Town, Faridabad - HSPCB	438	Severe	PM <sub>2.5</sub>
Gurugram	Teri Gram, Gurugram - HSPCB	390	Very Poor	PM <sub>2.5</sub>
Ghaziabad	Loni, Ghaziabad - UPPCB	403	Severe	PM <sub>2.5</sub>
	Sanjay Nagar, Ghaziabad - UPPCB	393	Very Poor	PM <sub>2.5</sub>
Greater Noida	Knowledge Park - V, Greater Noida - UPPCB	411	Severe	PM <sub>2.5</sub>
Noida	Sector-116, Noida - UPPCB	409	Severe	PM <sub>2.5</sub>
	Sector - 62, Noida - IMD	398	Very Poor	PM <sub>10</sub>
	Sector-1, Noida - UPPCB	396	Very Poor	PM <sub>2.5</sub>